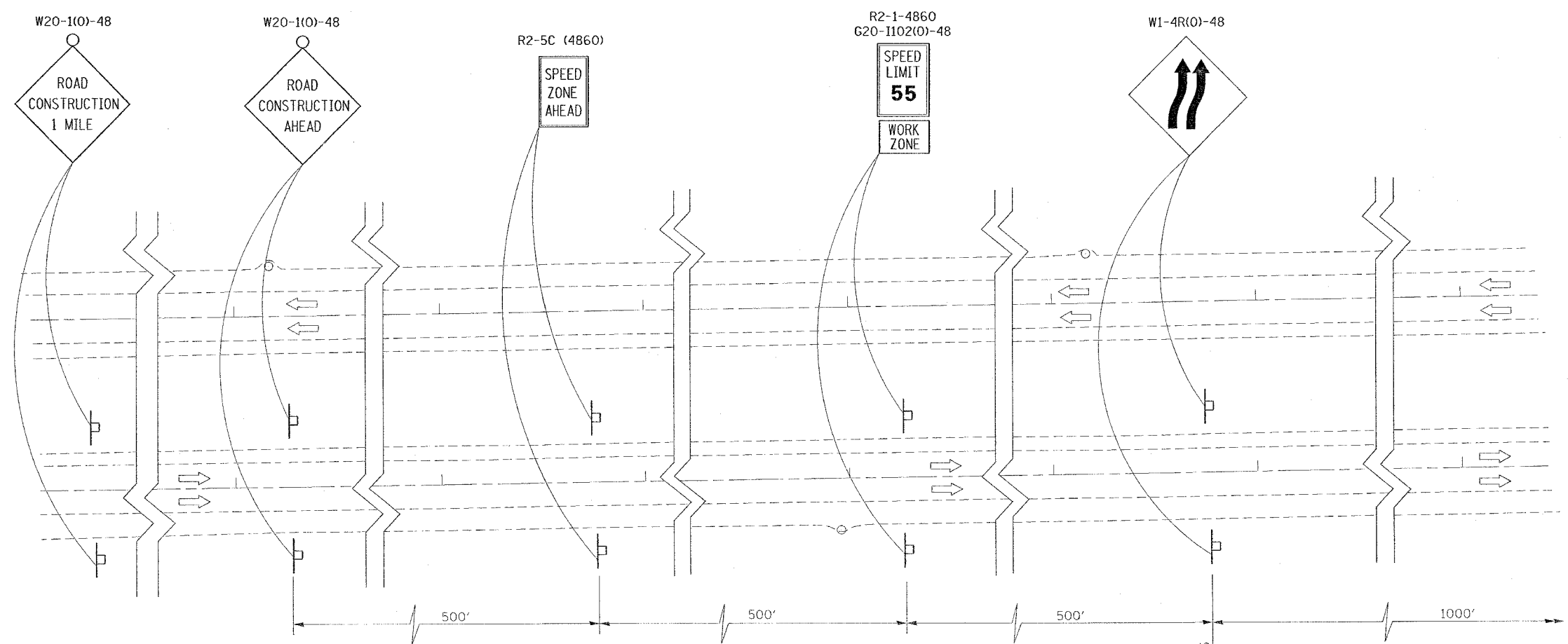


F.A. RTE.	SECTION	COUNTY	TOTAL SHEETS	SHEET NO.
*	**	WILLIAMSON	917	156
STA.		TO STA.		
FED. ROAD DIST. NO.		ILLINOIS FED. AID PROJECT		
* I-57, & OLD IL 13 (FAU 9629)				
** (X1-6-2)VB-2,(X1-6)HBK-2				



THE ADDITIONAL ROAD CONSTRUCTION AHEAD SIGN, THE WORK ZONE PUBLIC INFORMATION SIGN, AND THE PORTABLE CHANGEABLE MESSAGE SIGN SHALL BE PLACED ACCORDING TO TRAFFIC CONTROL STANDARD 701400 FOR BOTH NORTHBOUND AND SOUTHBOUND FAI-57 LANES.

PLOT DATE = 10/10/2005
 FILE NAME = c:\p3\98950\1487+15\1487+15.dgn
 PLOT SCALE = 3/8" = 1' IN.
 USER NAME = hester

REVISIONS		ILLINOIS DEPARTMENT OF TRANSPORTATION
NAME	DATE	
		FAI-57 STAGE 1A SHEET 2 OF 9
SCALE: VERT. NONE HORIZ. NONE		DRAWN BY CNH CHECKED BY