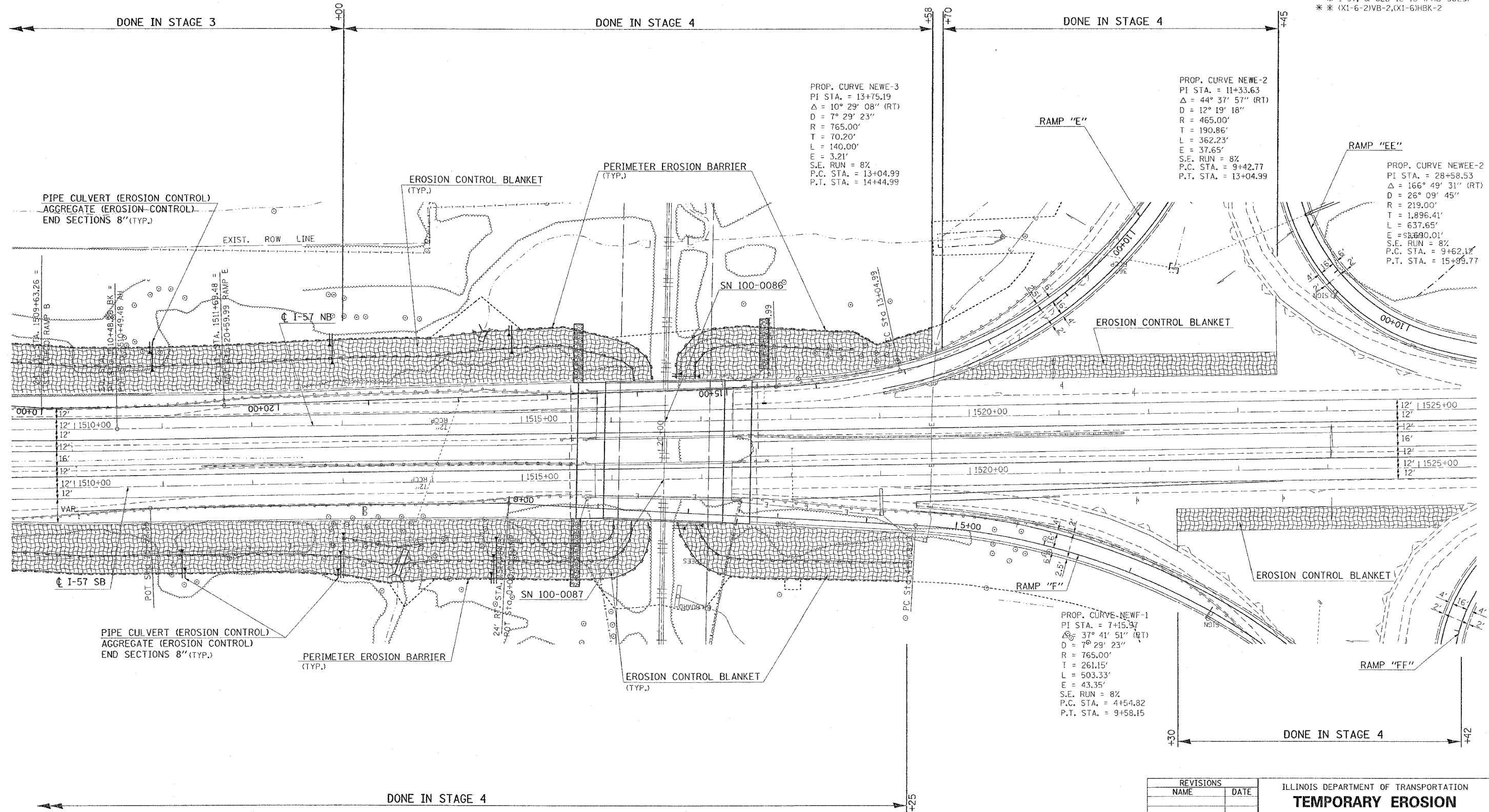
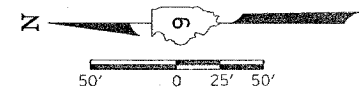


F.A. RTE.	SECTION	COUNTY	TOTAL SHEETS	SHEET NO.
**	**	WILLIAMSON	917	325

STA.	TO STA.
FED. ROAD DIST. NO.	ILLINOIS FED. AID PROJECT

* I-57, & OLD IL 13 (FAU 9629)
 ** (X1-6-2)VB-2,(X1-6)HBK-2



PROP. CURVE NEWE-3
 PI STA. = 13+75.19
 $\Delta = 10^\circ 29' 08''$ (RT)
 $D = 7^\circ 29' 23''$
 $R = 765.00'$
 $T = 70.20'$
 $L = 140.00'$
 $E = 3.21'$
 $S.E. RUN = 8\%$
 $P.C. STA. = 13+04.99$
 $P.T. STA. = 14+44.99$

PROP. CURVE NEWE-2
 PI STA. = 11+33.63
 $\Delta = 44^\circ 37' 57''$ (RT)
 $D = 12^\circ 19' 18''$
 $R = 465.00'$
 $T = 190.86'$
 $L = 362.23'$
 $E = 37.65'$
 $S.E. RUN = 8\%$
 $P.C. STA. = 9+42.77$
 $P.T. STA. = 13+04.99$

PROP. CURVE NEWEE-2
 PI STA. = 28+58.53
 $\Delta = 166^\circ 49' 31''$ (RT)
 $D = 26^\circ 09' 45''$
 $R = 219.00'$
 $T = 1,896.41'$
 $L = 637.65'$
 $E = 58,890.01'$
 $S.E. RUN = 8\%$
 $P.C. STA. = 9+62.12$
 $P.T. STA. = 15+99.77$

PROP. CURVE NEWF-1
 PI STA. = 7+15.97
 $\Delta = 37^\circ 41' 51''$ (RT)
 $D = 7^\circ 29' 23''$
 $R = 765.00'$
 $T = 261.15'$
 $L = 503.33'$
 $E = 43.35'$
 $S.E. RUN = 8\%$
 $P.C. STA. = 4+54.82$
 $P.T. STA. = 9+58.15$

REVISIONS	
NAME	DATE

ILLINOIS DEPARTMENT OF TRANSPORTATION
TEMPORARY EROSION CONTROL FAI-57 FOR STAGES 1, 2, 3, 4
STA. 1510+00 TO STA. 1525+00
 SHEET 1 OF 2
 SCALE: VERT. 50
 HORIZ. DATE
 DRAWN BY CNH
 CHECKED BY

PLOT DATE = 10/11/2006
 PLOT SCALE = 1/8"=1'-0"
 USER NAME = hnsdson
 PPA02, PPT02