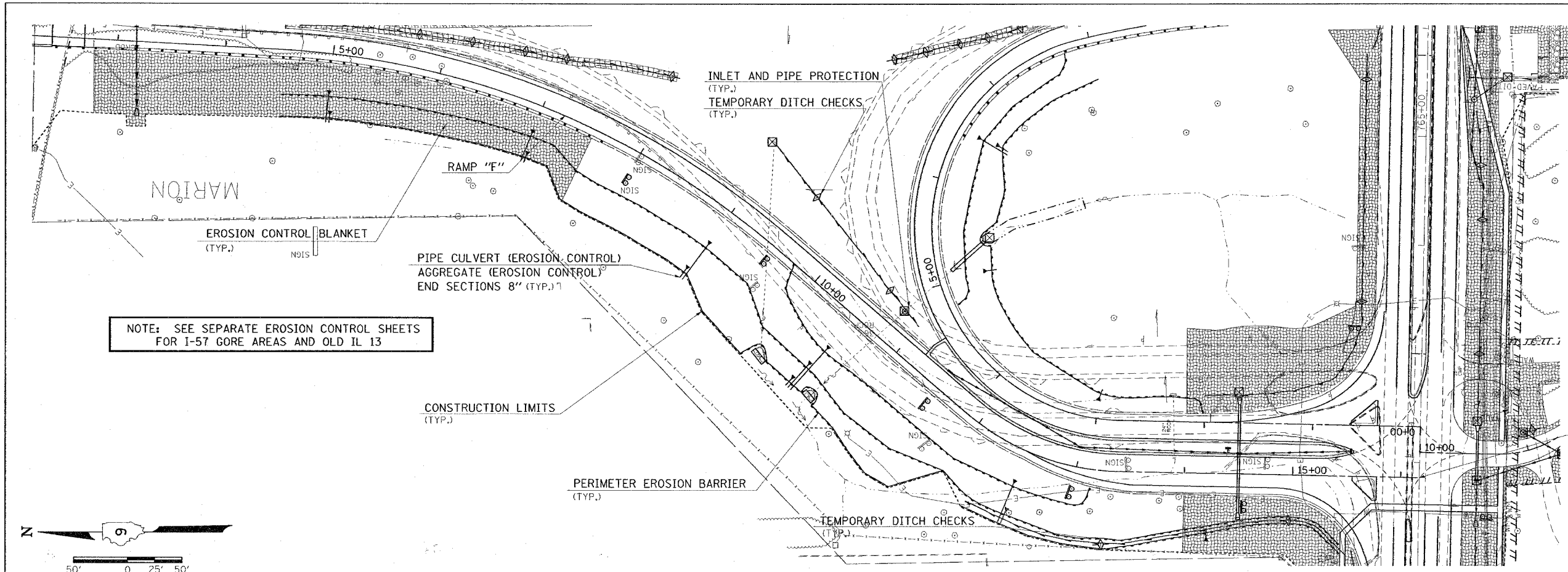


CONTRACT NO. 98950				
F.A. RTE.	SECTION	COUNTY	TOTAL SHEETS	SHEET NO.
*	*	WILLIAMSON	917	387
STA.		TO STA.		
FED. ROAD DIST. NO.		ILLINOIS FED. AID PROJECT		
* I-57, & OLD IL 13 (FAU 9629)				
** (X1-6-2)VB-2, (X1-6)HBK-2				



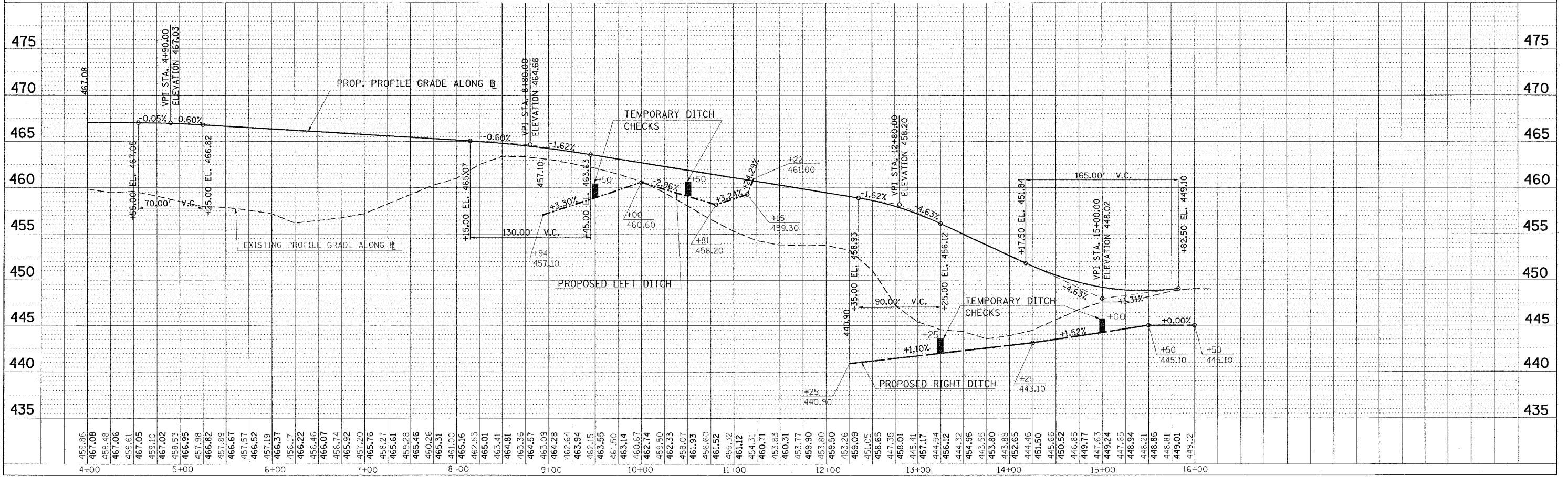
NOTE: SEE SEPARATE EROSION CONTROL SHEETS FOR I-57 GORE AREAS AND OLD IL 13

STA. 16+17.46 RAMP "F" = STA. 761+85.85 WEST MAIN STREET

PLAN	SURVEYED	DATE
	PLOTTED	
	NOTED	
	BY	
	NO. OF MAY CHECKED	
	CADD FILE NAME	

PROFILE	SURVEYED	DATE
	PLOTTED	
	NOTED	
	BY	
	NO. OF MAY CHECKED	
	STRUCTURE NOTATION CHD	

PLOT DATE = 11/21/2008
 FILE NAME = c:\p\proj\98950\98950.dwg
 PLOT SCALE = 5/8" = 1' IN.
 USER NAME = hudson



EROSION CONTROL STA. 4+00 TO STA. 16+17.46 RAMP "F"