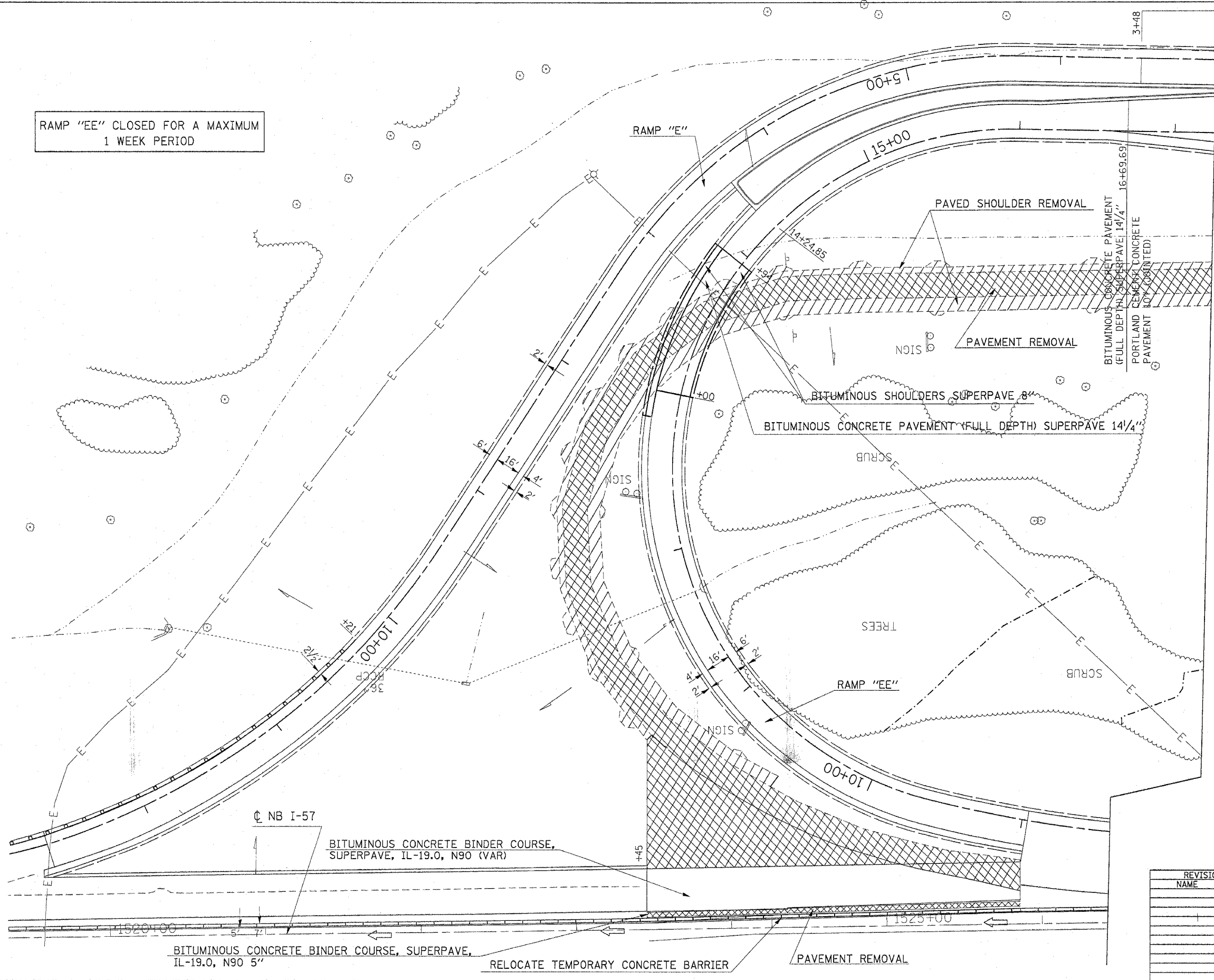


F.A. RTE.	SECTION	COUNTY	TOTAL SHEETS	SHEET NO.
*	*	WILLIAMSON	917	415

STA.	TO STA.
FED. ROAD DIST. NO.	ILLINOIS FED. AID PROJECT

* I-57, & OLD IL 13 (FAU 9629)
 ** (X1-6-2)VB-2,(X1-6)HBK-2

RAMP "EE" CLOSED FOR A MAXIMUM
1 WEEK PERIOD



BITUMINOUS CONCRETE PAVEMENT
(FULL DEPTH) SUPERPAVE 14 1/4"
 PORTLAND CEMENT CONCRETE
PAVEMENT 10" (JOINTED)

MATCHLINE STAGE 6A AND 6B (SEE SHEET 4 OF 4)

REVISIONS	
NAME	DATE

ILLINOIS DEPARTMENT OF TRANSPORTATION
RAMP "E" AND "EE"
STAGE 6A AND 6B
 SHEET 3 OF 4

SCALE: VERT. APPROX. 30
 HORIZ. DATE
 DRAWN BY CNH
 CHECKED BY

PLT DATE = 12/22/2006
 FILE NAME = \\snp\proj\98950\stage6a\stage6a.dgn
 PLOT SCALE = 30.0000 / 1 IN.
 USER NAME = vramo1jd