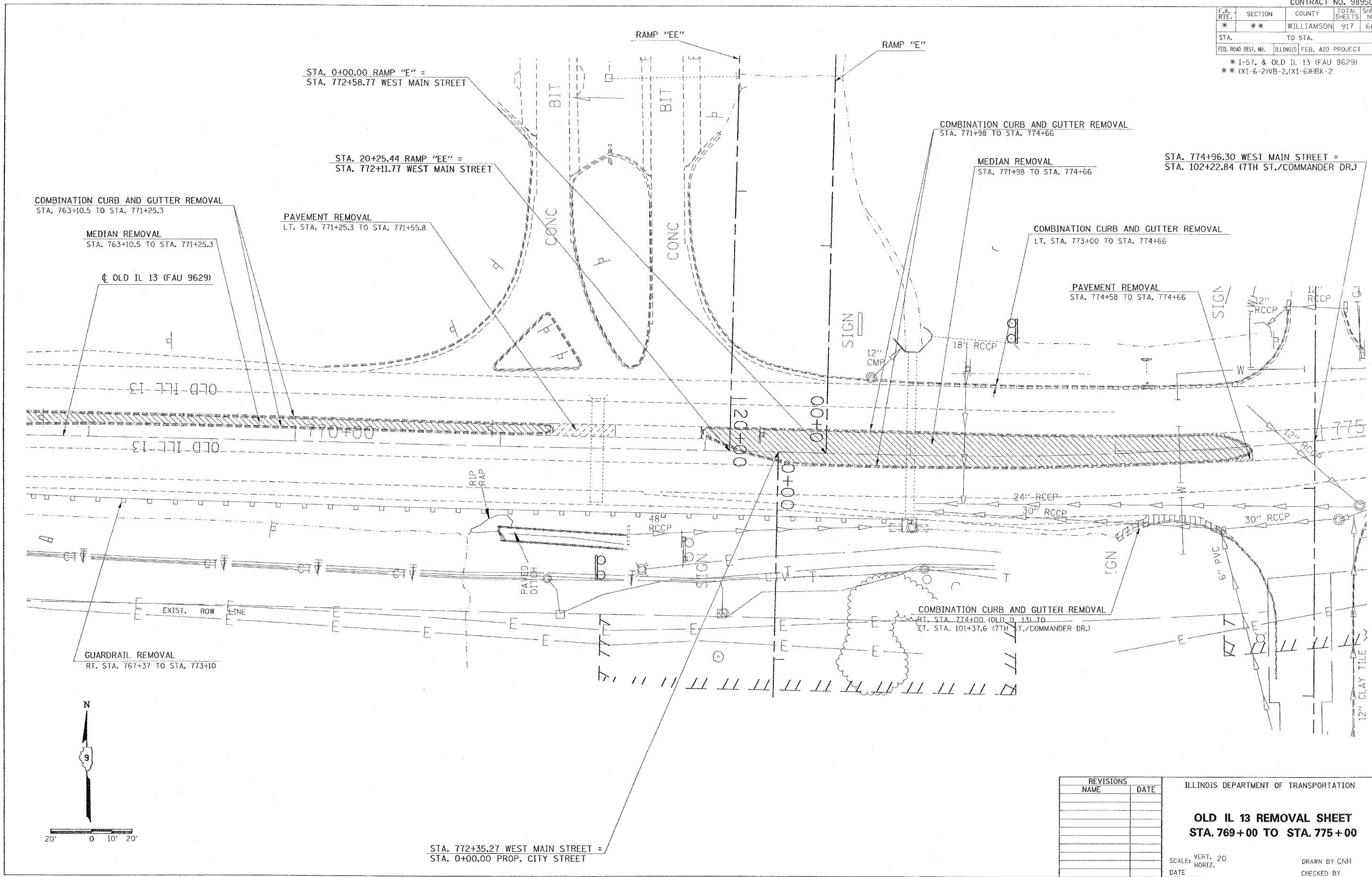
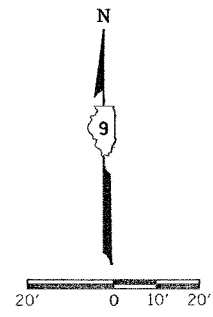


F.A. RTE.	SECTION	COUNTY	TOTAL SHEETS	SHEET NO.
*	**	WILLIAMSON	917	663
STA.		TO STA.		
FED. ROAD DIST. NO.	ILLINOIS FED. AID PROJECT			

\* I-57, & OLD IL 13 (FAU 9629)  
 \*\* (X1-6-2)VB-2, (X1-6)HBK-2



PLOT DATE = 10/12/2006  
 PLOT SCALE = 1" = 20'  
 USER NAME = harsden



REVISIONS	
NAME	DATE

ILLINOIS DEPARTMENT OF TRANSPORTATION

**OLD IL 13 REMOVAL SHEET**  
**STA. 769+00 TO STA. 775+00**

SCALE: VERT. 20'  
 HORIZ. 1" = 20'

DATE: \_\_\_\_\_ DRAWN BY CNH  
 CHECKED BY \_\_\_\_\_

STA. 772+35.27 WEST MAIN STREET =  
 STA. 0+00.00 PROP. CITY STREET