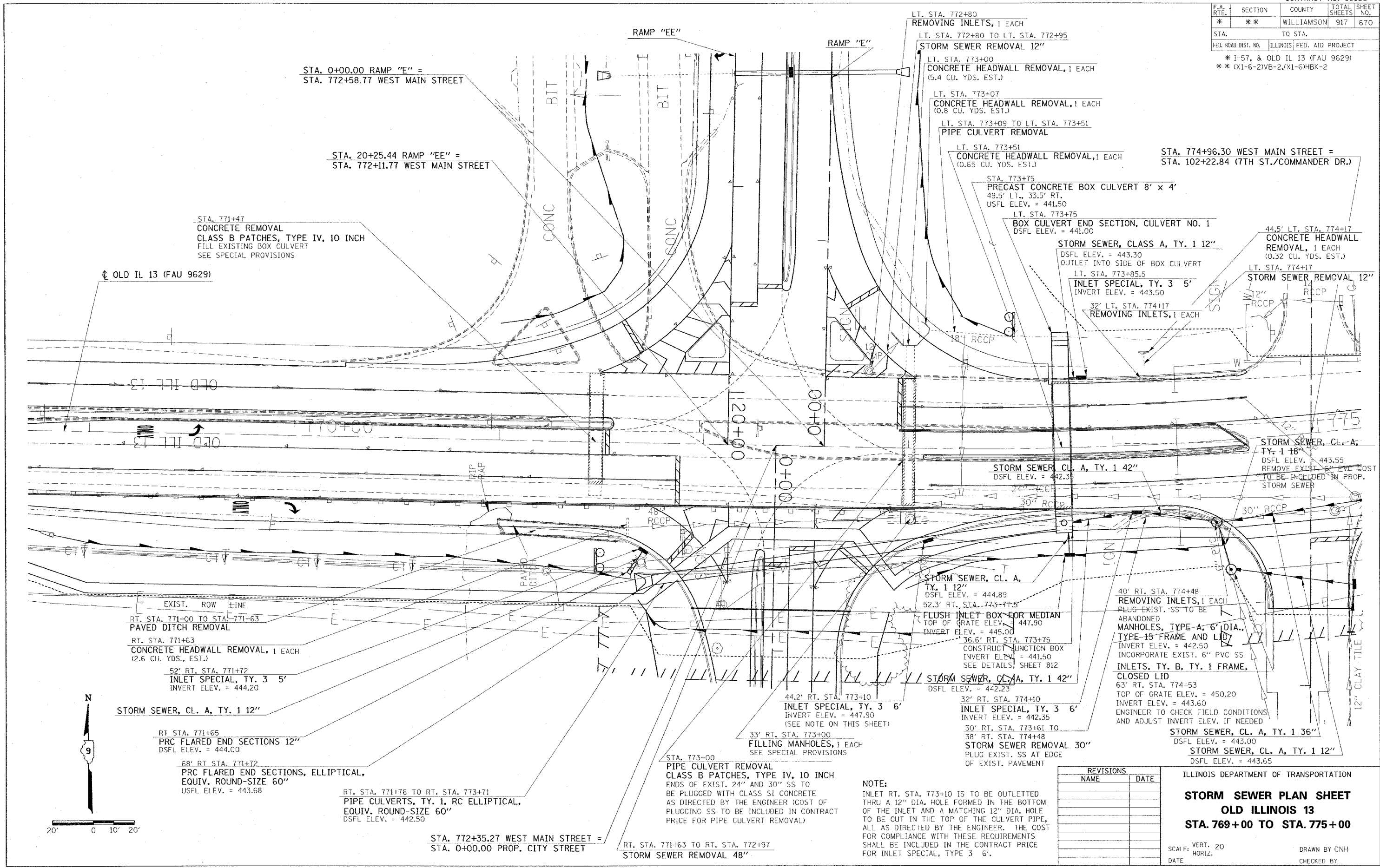


F.A. RTE.	SECTION	COUNTY	TOTAL SHEETS	SHEET NO.
*	**	WILLIAMSON	917	670
STA. TO STA.				
FED. ROAD DIST. NO.			ILLINOIS FED. AID PROJECT	

\* I-57, & OLD IL 13 (FAU 9629)  
 \*\* (X1-6-2)VB-2, (X1-6)HBK-2



STA. 0+00.00 RAMP "EE" =  
 STA. 772+58.77 WEST MAIN STREET

STA. 20+25.44 RAMP "EE" =  
 STA. 772+11.77 WEST MAIN STREET

STA. 771+47  
 CONCRETE REMOVAL  
 CLASS B PATCHES, TYPE IV, 10 INCH  
 FILL EXISTING BOX CULVERT  
 SEE SPECIAL PROVISIONS

OLD IL 13 (FAU 9629)

OLD IL 13

OLD IL 13

EXIST. ROW LINE

RT. STA. 771+00 TO STA. 771+63  
 PAVED DITCH REMOVAL

RT. STA. 771+63  
 CONCRETE HEADWALL REMOVAL, 1 EACH  
 (2.6 CU. YDS., EST.)

52' RT. STA. 771+72  
 INLET SPECIAL, TY. 3 5'  
 INVERT ELEV. = 444.20

STORM SEWER, CL. A, TY. 1 12"

RT. STA. 771+65  
 PRC FLARED END SECTIONS 12"  
 DSFL ELEV. = 444.00

68' RT. STA. 771+72  
 PRC FLARED END SECTIONS, ELLIPTICAL,  
 EQUIV. ROUND-SIZE 60"  
 USFL ELEV. = 443.68

RT. STA. 771+76 TO RT. STA. 773+71  
 PIPE CULVERTS, TY. 1, RC ELLIPTICAL,  
 EQUIV. ROUND-SIZE 60"  
 DSFL ELEV. = 442.50

STA. 772+35.27 WEST MAIN STREET =  
 STA. 0+00.00 PROP. CITY STREET

RT. STA. 771+63 TO RT. STA. 772+97  
 STORM SEWER REMOVAL 48"

RAMP "EE"

RAMP "EE"

LT. STA. 772+80  
 REMOVING INLETS, 1 EACH

LT. STA. 772+80 TO LT. STA. 772+95  
 STORM SEWER REMOVAL 12"

LT. STA. 773+00  
 CONCRETE HEADWALL REMOVAL, 1 EACH  
 (5.4 CU. YDS. EST.)

LT. STA. 773+07  
 CONCRETE HEADWALL REMOVAL, 1 EACH  
 (0.8 CU. YDS. EST.)

LT. STA. 773+09 TO LT. STA. 773+51  
 PIPE CULVERT REMOVAL

LT. STA. 773+51  
 CONCRETE HEADWALL REMOVAL, 1 EACH  
 (0.65 CU. YDS. EST.)

STA. 773+75  
 PRECAST CONCRETE BOX CULVERT 8' x 4'  
 49.5' LT., 33.5' RT.  
 USFL ELEV. = 441.50

LT. STA. 773+75  
 BOX CULVERT END SECTION, CULVERT NO. 1  
 DSFL ELEV. = 441.00

STORM SEWER, CLASS A, TY. 1 12"  
 DSFL ELEV. = 443.30  
 OUTLET INTO SIDE OF BOX CULVERT

LT. STA. 773+85.5  
 INLET SPECIAL, TY. 3 5'  
 INVERT ELEV. = 443.50

32' LT. STA. 774+17  
 REMOVING INLETS, 1 EACH

STA. 774+96.30 WEST MAIN STREET =  
 STA. 102+22.84 (7TH ST./COMMANDER DR.)

44.5' LT. STA. 774+17  
 CONCRETE HEADWALL  
 REMOVAL, 1 EACH  
 (0.32 CU. YDS. EST.)

LT. STA. 774+17  
 STORM SEWER REMOVAL 12"

STORM SEWER, CL. A, TY. 1 42"  
 DSFL ELEV. = 442.35

STORM SEWER, CL. A,  
 TY. 1 18"  
 DSFL ELEV. = 443.55  
 REMOVE EXIST. 6" ELEV. COST  
 TO BE INCLUDED IN PROP.  
 STORM SEWER

STORM SEWER, CL. A,  
 TY. 1 12"  
 DSFL ELEV. = 444.89

52.3' RT. STA. 773+77.5  
 FLUSH INLET BOX FOR MEDIAN  
 TOP OF GRATE ELEV. = 447.90

INVERT ELEV. = 445.00

36.6' RT. STA. 773+75  
 CONSTRUCT JUNCTION BOX  
 INVERT ELEV. = 441.50  
 SEE DETAILS, SHEET 812

STORM SEWER, CL. A, TY. 1 42"  
 DSFL ELEV. = 442.23

44.2' RT. STA. 773+10  
 INLET SPECIAL, TY. 3 6'  
 INVERT ELEV. = 447.90  
 (SEE NOTE ON THIS SHEET)

33' RT. STA. 773+00  
 FILLING MANHOLES, 1 EACH  
 SEE SPECIAL PROVISIONS

STA. 773+00  
 PIPE CULVERT REMOVAL  
 CLASS B PATCHES, TYPE IV, 10 INCH  
 ENDS OF EXIST. 24" AND 30" SS TO  
 BE PLUGGED WITH CLASS B CONCRETE  
 AS DIRECTED BY THE ENGINEER (COST OF  
 PLUGGING SS TO BE INCLUDED IN CONTRACT  
 PRICE FOR PIPE CULVERT REMOVAL)

NOTE:  
 INLET RT. STA. 773+10 IS TO BE OUTLETTED  
 THRU A 12" DIA. HOLE FORMED IN THE BOTTOM  
 OF THE INLET AND A MATCHING 12" DIA. HOLE  
 TO BE CUT IN THE TOP OF THE CULVERT PIPE,  
 ALL AS DIRECTED BY THE ENGINEER. THE COST  
 FOR COMPLIANCE WITH THESE REQUIREMENTS  
 SHALL BE INCLUDED IN THE CONTRACT PRICE  
 FOR INLET SPECIAL, TYPE 3 6'.

40' RT. STA. 774+48  
 REMOVING INLETS, 1 EACH  
 PLUG EXIST. SS TO BE  
 ABANDONED

MANHOLES, TYPE-A, 6" DIA.,  
 TYPE-15 FRAME AND LID

INVERT ELEV. = 442.50  
 INCORPORATE EXIST. 6" PVC SS

INLETS, TY. B, TY. 1 FRAME,  
 CLOSED LID

63' RT. STA. 774+53  
 TOP OF GRATE ELEV. = 450.20  
 INVERT ELEV. = 443.60  
 ENGINEER TO CHECK FIELD CONDITIONS  
 AND ADJUST INVERT ELEV. IF NEEDED

STORM SEWER, CL. A, TY. 1 36"  
 DSFL ELEV. = 443.00

STORM SEWER, CL. A, TY. 1 12"  
 DSFL ELEV. = 443.65

REVISIONS	
NAME	DATE

ILLINOIS DEPARTMENT OF TRANSPORTATION

**STORM SEWER PLAN SHEET**  
**OLD ILLINOIS 13**  
**STA. 769+00 TO STA. 775+00**

SCALE: VERT. 20  
 HORIZ. 1" = 40'

DRAWN BY CNH  
 CHECKED BY

PLOT DATE = 11/22/2006  
 FILE NAME = c:\p\projects\982892\plott\982892.dgn  
 PLOT SCALE = 28.0000 / IN.  
 USER NAME = hester