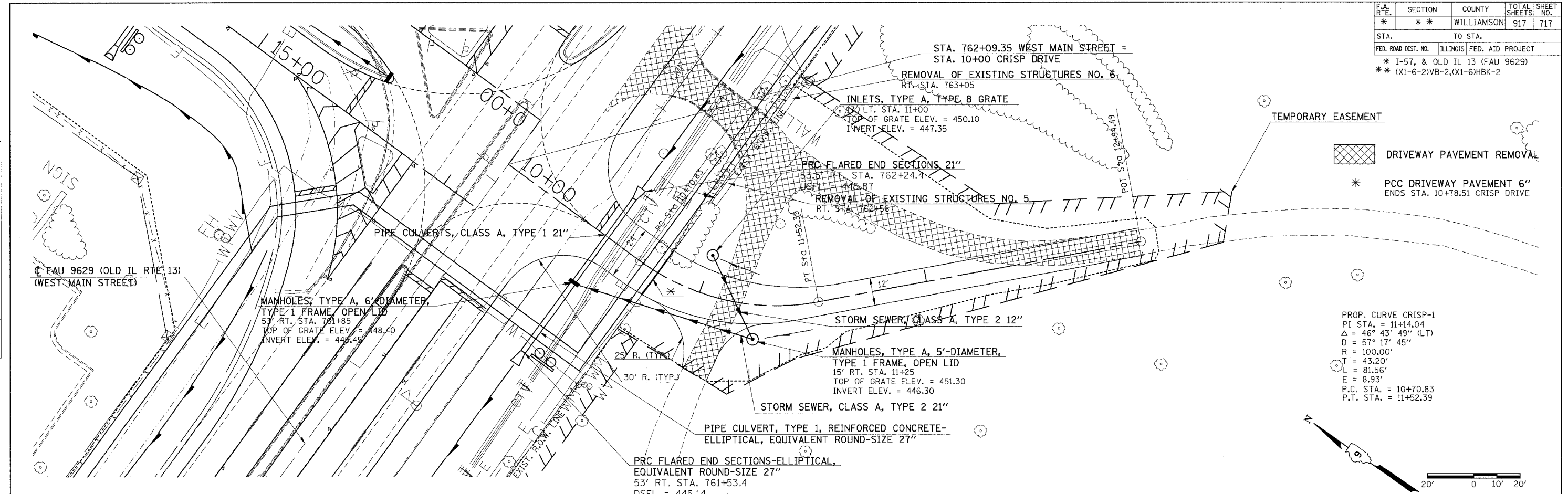


F.A. RTE.	SECTION	COUNTY	TOTAL SHEETS	SHEET NO.
*	*	WILLIAMSON	917	717
STA. TO STA.				
FED. ROAD DIST. NO. ILLINOIS FED. AID PROJECT				
* I-57, & OLD IL 13 (FAU 9629)				
** (X1-6-2)VB-2,(X1-6)HBK-2				

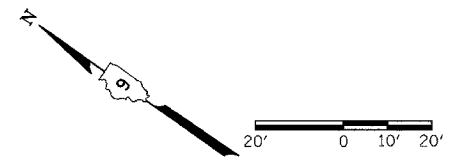


TEMPORARY EASEMENT

DRIVEWAY PAVEMENT REMOVAL

\* PCC DRIVEWAY PAVEMENT 6" ENDS STA. 10+78.51 CRISP DRIVE

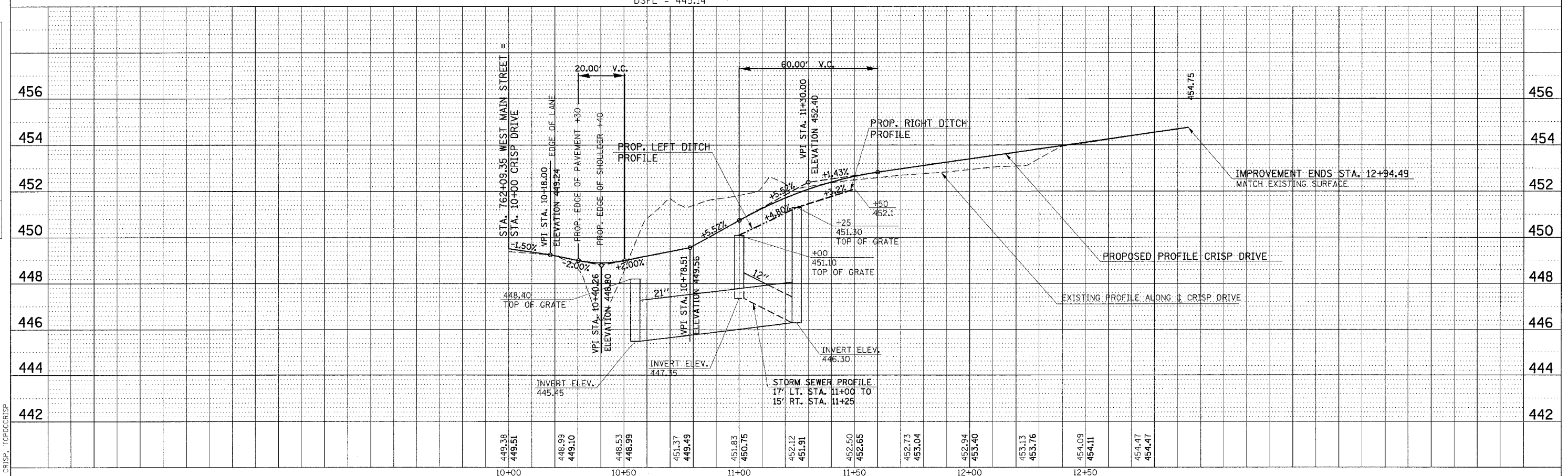
PROP. CURVE CRISP-1  
 PI STA. = 11+14.04  
 $\Delta = 46^\circ 43' 49''$  (LT)  
 $D = 57^\circ 17' 45''$   
 $R = 100.00'$   
 $T = 43.20'$   
 $L = 81.56'$   
 $E = 8.93'$   
 P.C. STA. = 10+70.83  
 P.T. STA. = 11+52.39



PLAN	SURVEYED	DATE
NOTE BOOK	ALIGNED CHECKED	BY
NO.	BY	
	DATE	

PROFILE	SURVEYED	DATE
NOTE BOOK	GRADES CHECKED	BY
NO.	BY	
	DATE	

PLT DATE = 12/16/2006  
 FILE NAME = s:\p\98950\98950.dwg  
 PLOT SCALE = 20.00000 / IN.  
 USER NAME = hudson  
 CRISP, TOPDCRISP



PLAN - PROFILE STA. 10+00 TO STA. 12+94.49 CRISP DRIVE