

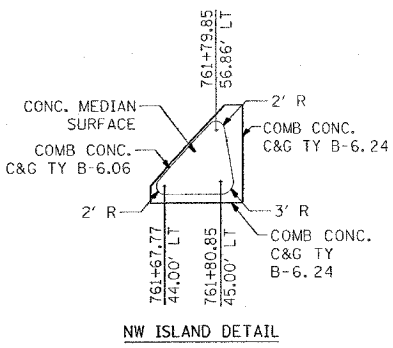
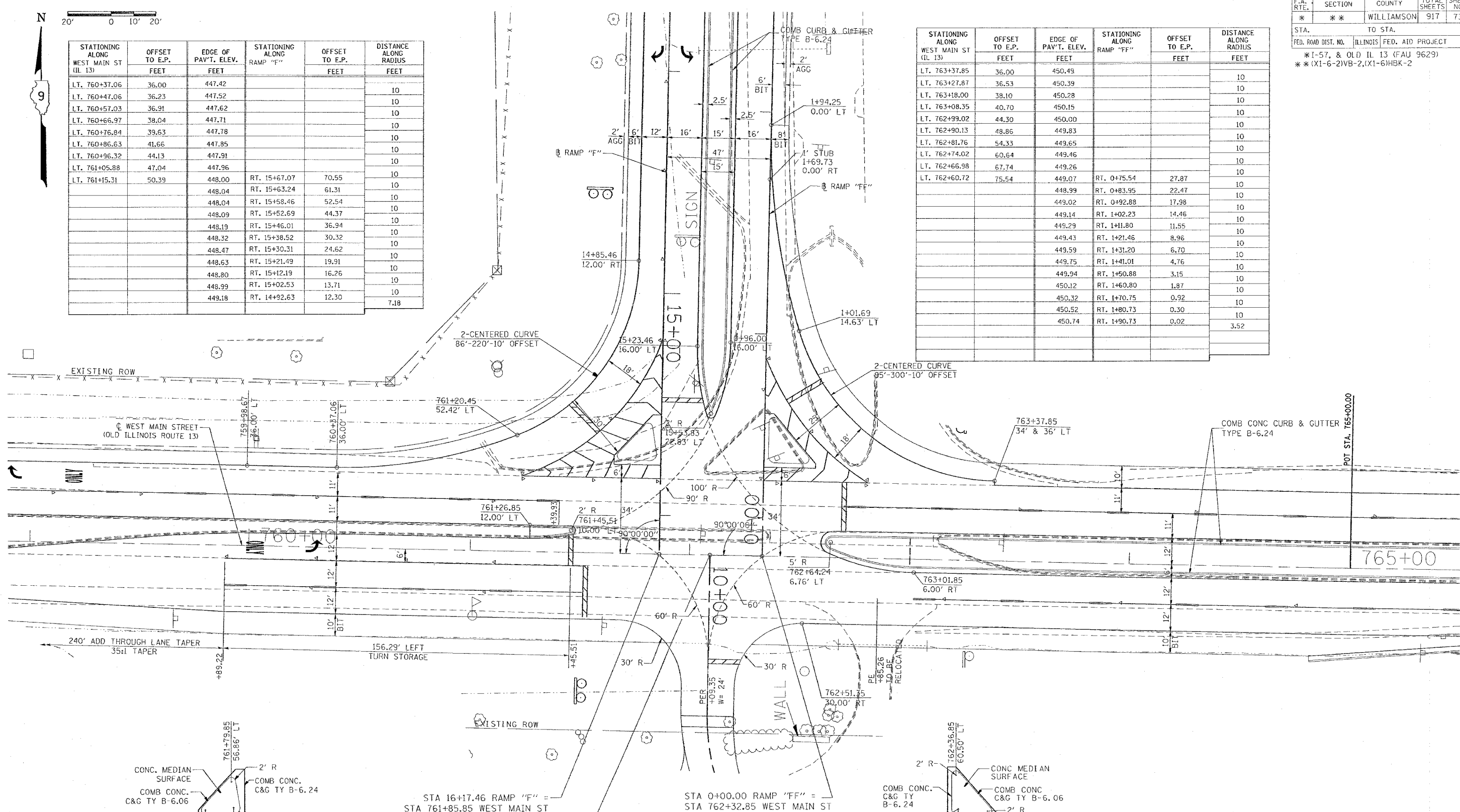
F.A. RTE.	SECTION	COUNTY	TOTAL SHEETS	SHEET NO.
*	**	WILLIAMSON	917	733

STA. TO STA.  
 FED. ROAD DIST. NO. ILLINOIS FED. AID PROJECT  
 \* I-57, & OLD IL 13 (FAU 9629)  
 \*\* (X1-6-2)VB-2, (X1-6)HBK-2



STATIONING ALONG WEST MAIN ST (IL 13)	OFFSET TO E.P. FEET	EDGE OF PAV'T. ELEV. FEET	STATIONING ALONG RAMP "F"	OFFSET TO E.P. FEET	DISTANCE ALONG RADIUS FEET
LT. 760+37.06	36.00	447.42			10
LT. 760+47.06	36.23	447.52			10
LT. 760+57.03	36.91	447.62			10
LT. 760+66.97	38.04	447.71			10
LT. 760+76.84	39.63	447.78			10
LT. 760+86.63	41.66	447.85			10
LT. 760+96.32	44.13	447.91			10
LT. 761+05.88	47.04	447.96			10
LT. 761+15.31	50.39	448.00			10
		448.04	RT. 15+67.07	70.55	10
		448.04	RT. 15+63.24	61.31	10
		448.04	RT. 15+58.46	52.54	10
		448.09	RT. 15+52.69	44.37	10
		448.19	RT. 15+46.01	36.94	10
		448.32	RT. 15+38.52	30.32	10
		448.47	RT. 15+30.31	24.62	10
		448.63	RT. 15+21.49	19.91	10
		448.80	RT. 15+12.19	16.26	10
		448.99	RT. 15+02.53	13.71	10
		449.18	RT. 14+92.63	12.30	10
					7.18

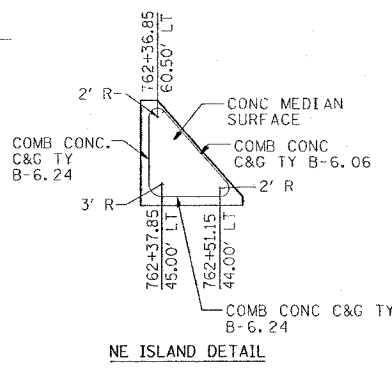
STATIONING ALONG WEST MAIN ST (IL 13)	OFFSET TO E.P. FEET	EDGE OF PAV'T. ELEV. FEET	STATIONING ALONG RAMP "FF"	OFFSET TO E.P. FEET	DISTANCE ALONG RADIUS FEET
LT. 763+37.85	36.00	450.49			10
LT. 763+27.87	36.53	450.39			10
LT. 763+18.00	38.10	450.28			10
LT. 763+08.35	40.70	450.15			10
LT. 762+99.02	44.30	450.00			10
LT. 762+90.13	48.86	449.83			10
LT. 762+81.76	54.33	449.65			10
LT. 762+74.02	60.64	449.46			10
LT. 762+66.98	67.74	449.26			10
LT. 762+60.72	75.54	449.07	RT. 0+75.54	27.87	10
		448.99	RT. 0+83.95	22.47	10
		449.02	RT. 0+92.88	17.98	10
		449.14	RT. 1+02.23	14.46	10
		449.29	RT. 1+11.80	11.55	10
		449.43	RT. 1+21.46	8.96	10
		449.59	RT. 1+31.20	6.70	10
		449.75	RT. 1+41.01	4.76	10
		449.94	RT. 1+50.88	3.15	10
		450.12	RT. 1+60.80	1.87	10
		450.32	RT. 1+70.75	0.92	10
		450.52	RT. 1+80.73	0.30	10
		450.74	RT. 1+90.73	0.02	3.52



STA 16+17.46 RAMP "F" =  
 STA 761+85.85 WEST MAIN ST

STA 10+00 CRISP DRIVE =  
 STA. 762+09.35 WEST MAIN ST

STA 0+00.00 RAMP "FF" =  
 STA 762+32.85 WEST MAIN ST



REVISIONS	
NAME	DATE

ILLINOIS DEPARTMENT OF TRANSPORTATION

**GEOMETRICS**  
**OLD IL 13**  
**RAMPS "F" AND "FF"**  
**STA. 760+00 TO STA. 765+00**

SCALE: VERT. 20  
 HORIZ. DATE

DRAWN BY CNH  
 CHECKED BY

PLOT DATE = 10/17/2009  
 PLOT SCALE = 24.0000  
 USER NAME = heason