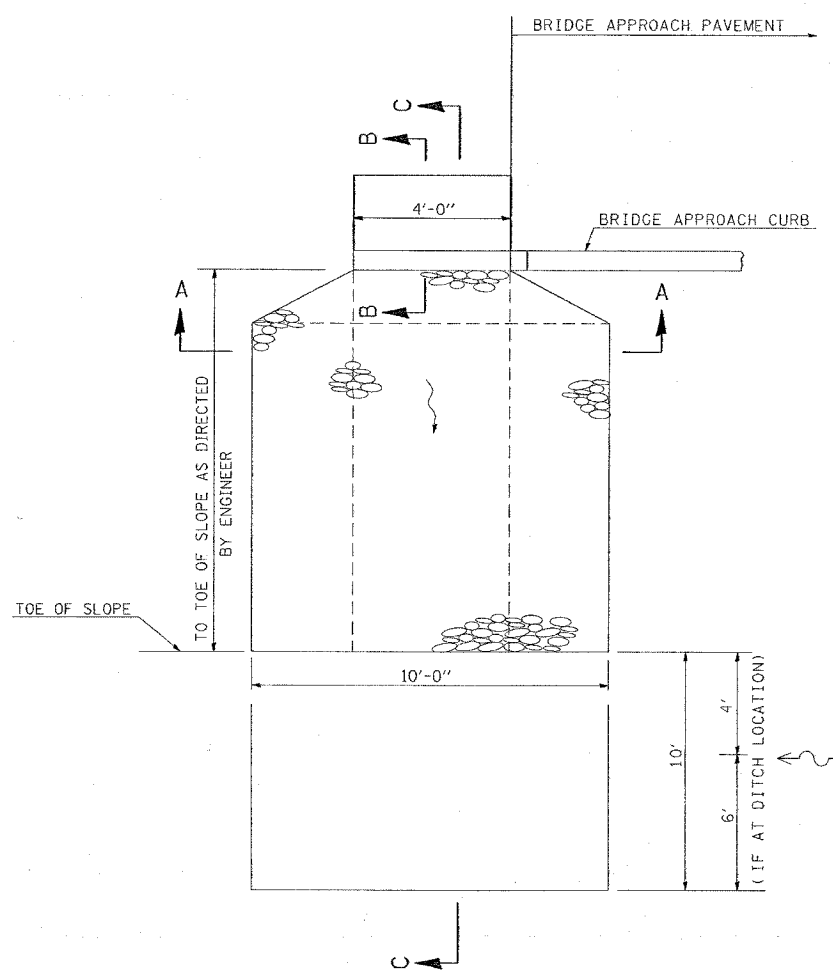
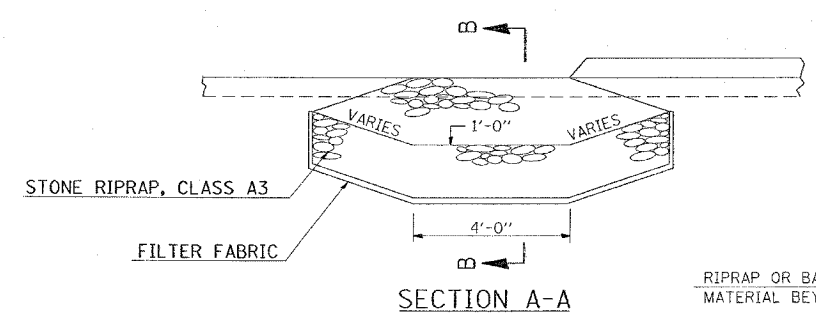


CONTRACT NO. 98950				
F.A. RTE.	SECTION	COUNTY	TOTAL SHEETS	SHEET NO.
*	**	WILLIAMSON	917	824
STA.		TO STA.		
FED. ROAD DIST. NO.		ILLINOIS	FED. AID PROJECT	
* I-57, & OLD IL 13 (FAU 9629)				
* (X1-6-2)VB-2,(X1-6)HBK-2				



CURB OUTLET DETAIL



THE EXCESS EXCAVATION MAY BE USED AS EMBANKMENT OR AS DIRECTED BY THE ENGINEER.

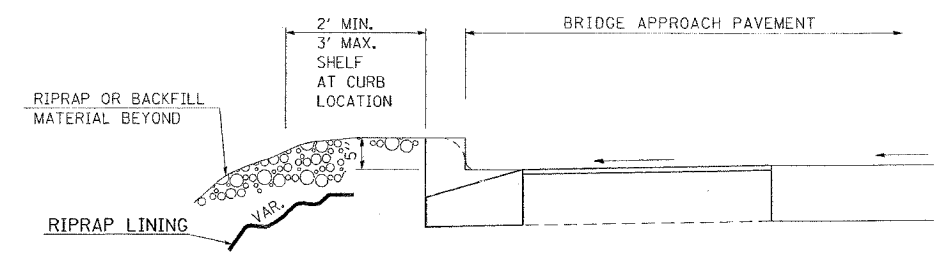
LOCATIONS

SEE RIPRAP SCHEDULE SHEETS

FINAL LOCATION AS DIRECTED BY THE ENGINEER.

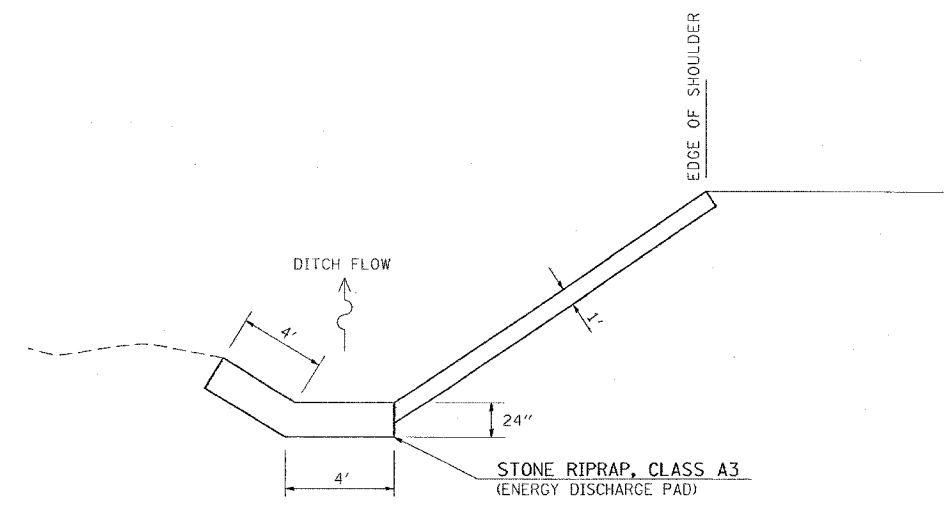
NOTE:

- EARTH EXCAVATION IS INCLUDED IN THE COST OF STONE RIP RAP, CLASS A3.

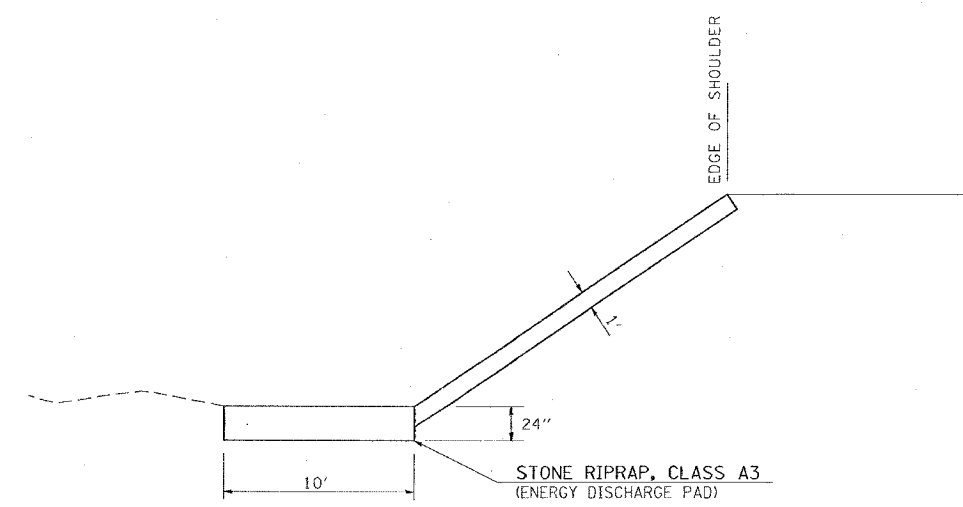


SECTION B-B (NOT TO SCALE)

MODIFIED
STD. 9-95



SECTION C-C W/DITCH (NOT TO SCALE)



SECTION C-C W/NO DITCH (NOT TO SCALE)

DATE = 10/20/2006
 FILE NAME = 1022802.dwg
 PLOT SCALE = 50.0000 / IN
 USER NAME = hudson

REVISIONS	
NAME	DATE

ILLINOIS DEPARTMENT OF TRANSPORTATION

**DETAIL:
CURB OUTLET**

SCALE: VERT. NONE
HORIZ. DATE

DRAWN BY CNH
CHECKED BY