

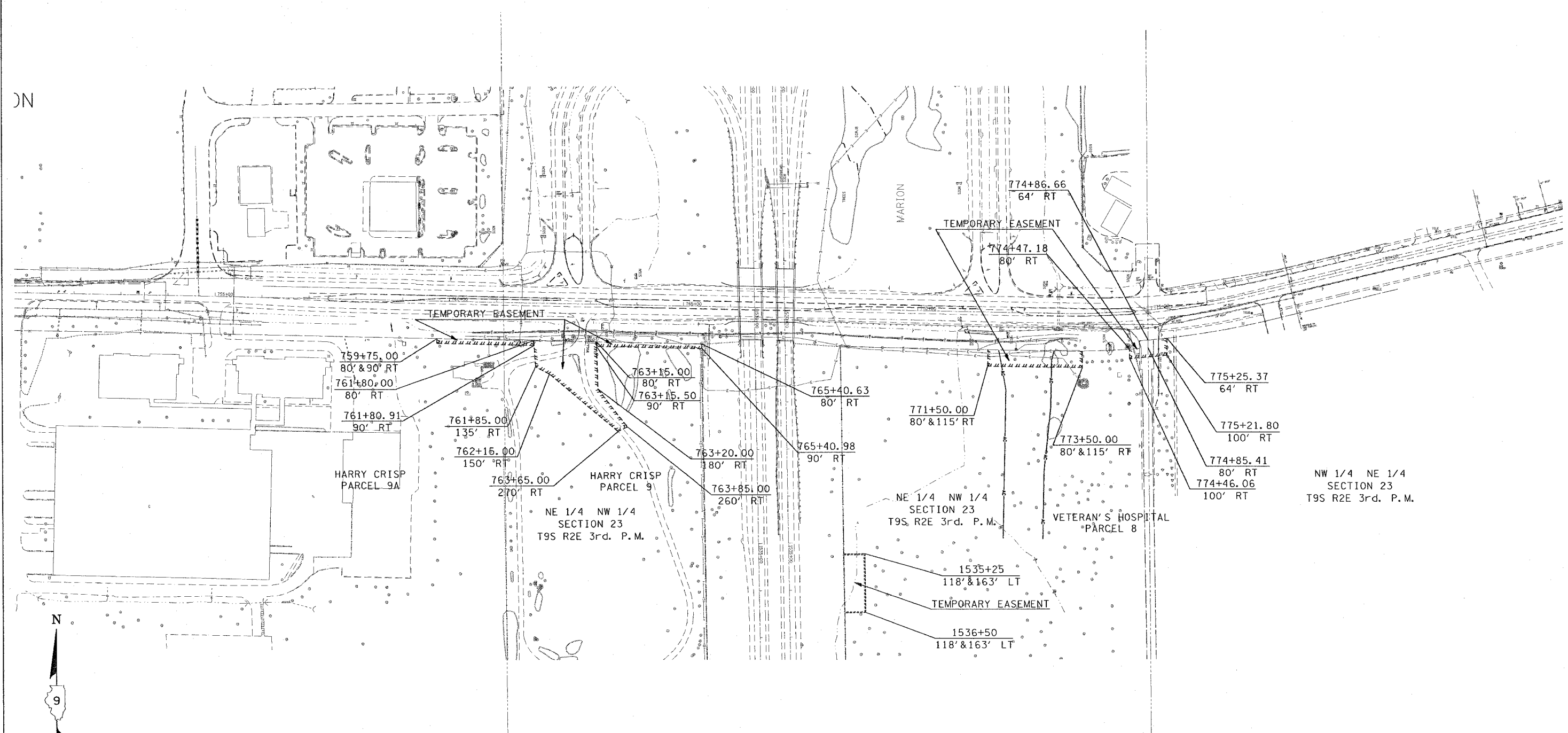
F.A. RTE.	SECTION	COUNTY	TOTAL SHEETS	SHEET NO.
*	**	WILLIAMSON	917	831

STA. TO STA.

FED. ROAD DIST. NO. ILLINOIS FED. AID PROJECT

* I-57, & OLD IL 13 (FAU 9629)

** (X1-6-2)VB-2, (X1-6)HBK-2



NW 1/4 NE 1/4 SECTION 23 T9S R2E 3rd. P.M.

VETERAN'S HOSPITAL PARCEL 8

HARRY CRISP PARCEL 9
NE 1/4 NW 1/4 SECTION 23 T9S R2E 3rd. P.M.

HARRY CRISP PARCEL 9A

PARCEL NO.	NAME	ACREAGE:	TE
8	VETERAN'S HOSPITAL		0.342±
9	HARRY CRISP		0.364±
9A	HARRY CRISP		0.099±

REVISIONS	
NAME	DATE

ILLINOIS DEPARTMENT OF TRANSPORTATION

R.O.W.

SCALE: VERT. 100
HORIZ. DATE

DRAWN BY CNH
CHECKED BY LAND AC

PLT DATE = 12/15/2006
PLT SCALE = 100/2000' / IN.
USER NAME = hanson

