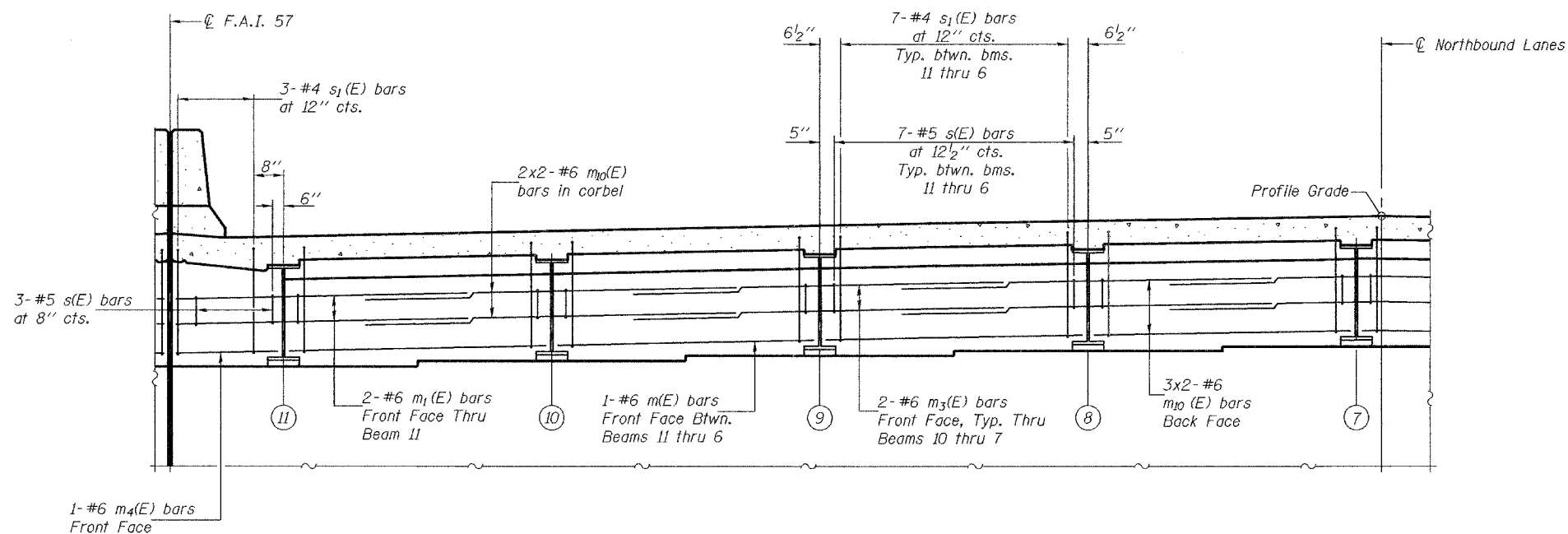


STATE OF ILLINOIS
DEPARTMENT OF TRANSPORTATION

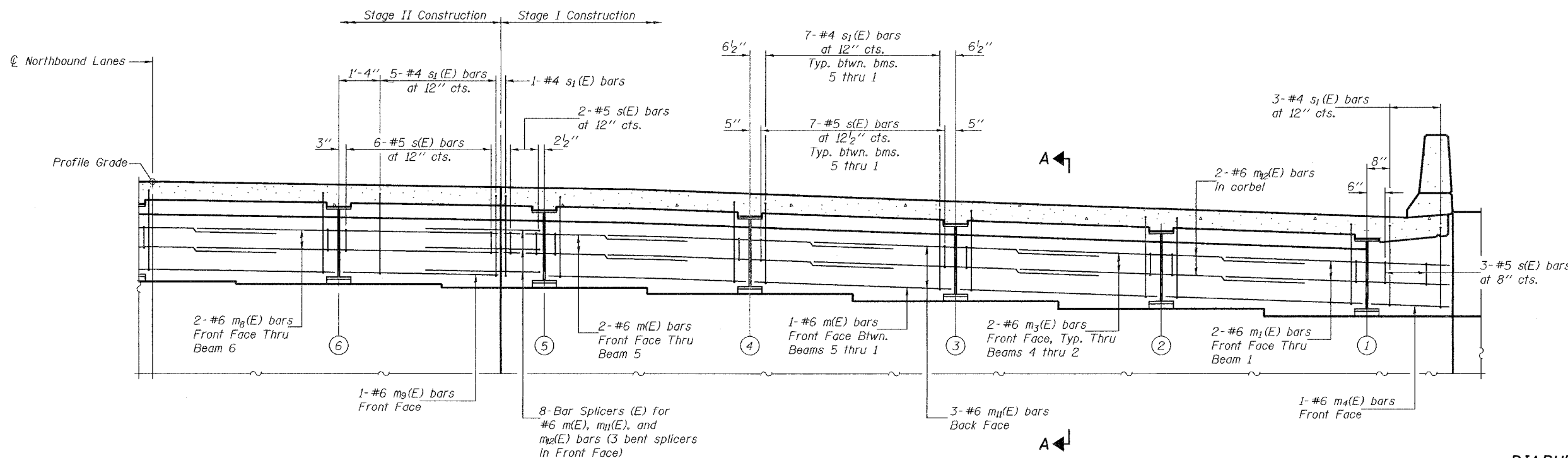
ROUTE NO.	SECTION	COUNTY	POST MILES	SHEET	SHEET NO.
F.A.I. 57	(X1-6-2) VB-2	WILLIAMSON	917	854	51 SHEETS
FED. ROAD DIST. NO. 7		ILLINOIS	FED. AID PROJECT-		

Contract #98950



MIN. BAR LAP
#6 bar = 2'-9"

Notes:
Reinforcement bars in diaphragm are billed with superstructure on sheet 19 of 51.
Concrete in diaphragm is included with Concrete Superstructure on sheet 19 of 51.
For details of bars s(E) & s1(E) see sheet 19 of 51.
The s(E) and s1(E) bars shall be placed parallel to the beams. Spacing for these bars shall be at right angles to the beams.
For Bar Splicer Details see sheet 48 of 51.
For Section A-A see sheet 24 of 51.
Bars indicated thus 3x2-#6 etc. indicates 3 lines of bars with 2 lengths per line.



ELEVATION

Looking North, at North Abutment, SN 100-0086 (N.B.)

DIAPHRAGM DETAILS
F.A.I. RT. 57 SEC. (X1-6-2)VB-2
WILLIAMSON COUNTY
STA. 1516+58.56
S.N. 100-0086 (N.B.)
S.N. 100-0087 (S.B.)

DESIGNED	Michael D. Clima
CHECKED	Fess Teklehaimanot
DRAWN	BECKY M. LEACH
CHECKED	M.D.C. & F.T.

January 22, 2007
EXAMINED *Thomas J. Damagalki*
PRINCIPAL ENGINEER OF BRIDGE DESIGN
PASSED *Ralph E. Anderson*
ENGINEER OF BRIDGES AND STRUCTURES