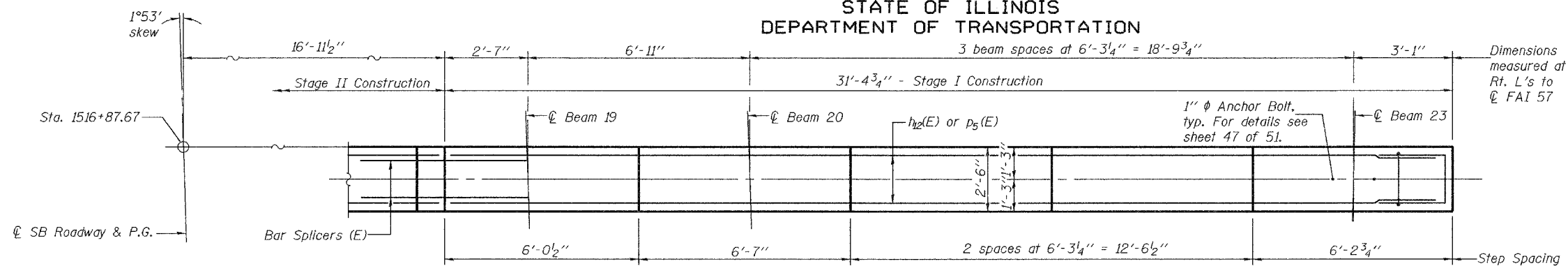


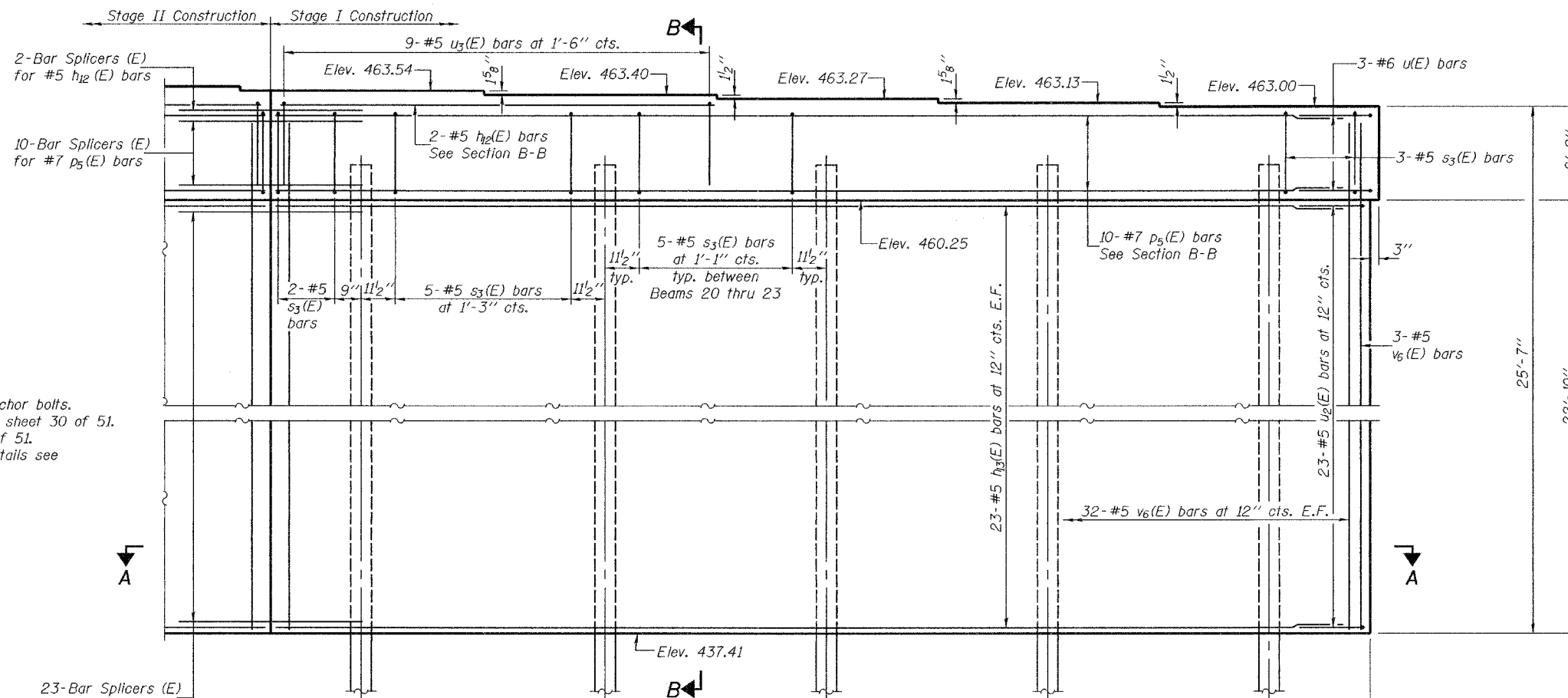
STATE OF ILLINOIS
DEPARTMENT OF TRANSPORTATION

ROUTE NO.	SECTION	COUNTY	TOTAL SHEETS	SHEET	SHEET NO. 46
F.A.I. 57	XI-6-2 VB-2	WILLIAMSON	917	879	
FED. ROAD DIST. NO. 7		ILLINOIS	FED. AID PROJECT-		51 SHEETS

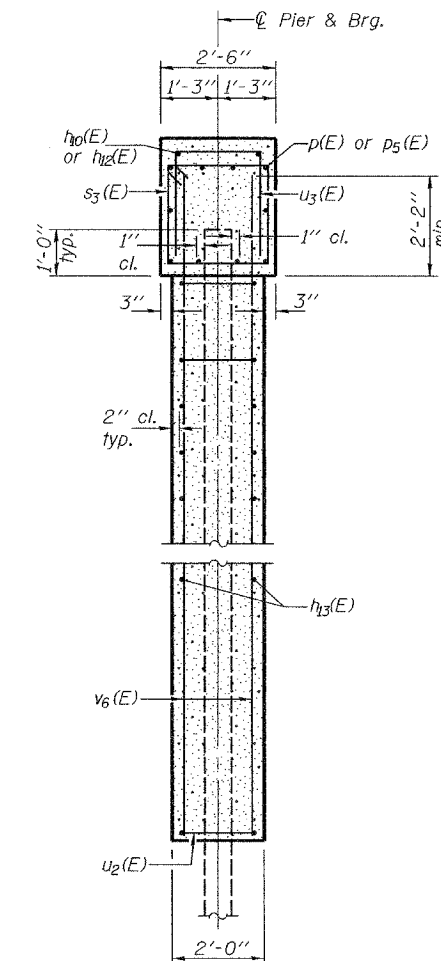
Contract #98950



TOP PLAN



ELEVATION
(Looking South)



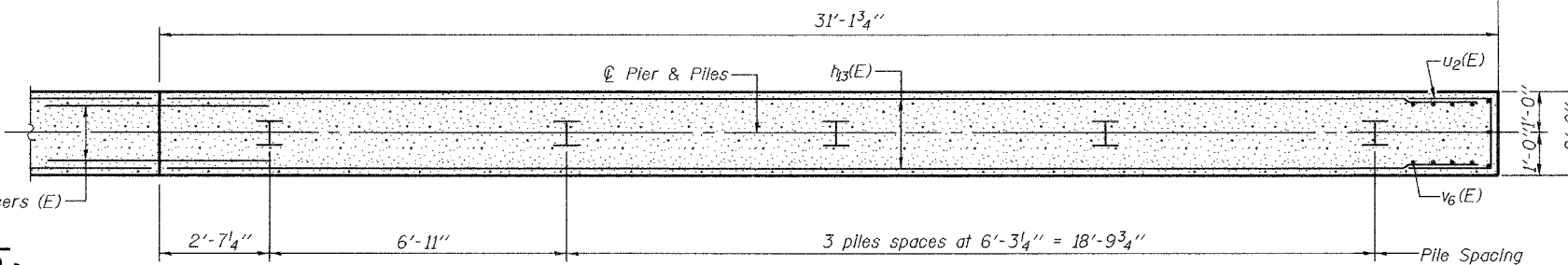
SECTION B-B

Notes: Pour steps monolithically with cap.
Space reinforcement in cap to miss anchor bolts.
For Anchor Bolt installation details see sheet 30 of 51.
For Bar Splicer details see sheet 48 of 51.
For Bill of Material and bar bending details see sheet 47 of 51.

PILE DATA
(PIER 2-SB)

Type: HP14x73
Nominal Required Bearing: 578 kips
Factored Resistance Available: 289 kips
Est. Length: 60 feet
No. of Production Piles: 12

23-Bar Splicers (E)
for #5 h₁₃(E) bars
Each Face



SECTION A-A

DESIGNED	Michael D. Cima
CHECKED	Fess Teklehaimanot
DRAWN	BECKY M. LEACH
CHECKED	M.D.C. & F.T.

January 22, 2007
EXAMINED *Thomas J. Damagala*
PASSED *Ralph E. Carlson*
ENGINEER OF BRIDGE DESIGN
ENGINEER OF BRIDGES AND STRUCTURES

PIER 2 (STAGE I - SB)
F.A.I. RT. 57 SEC. (XI-6-2)VB-2
WILLIAMSON COUNTY
STA. 1516+58.56
S.N. 100-0086 (N.B.)
S.N. 100-0087 (S.B.)