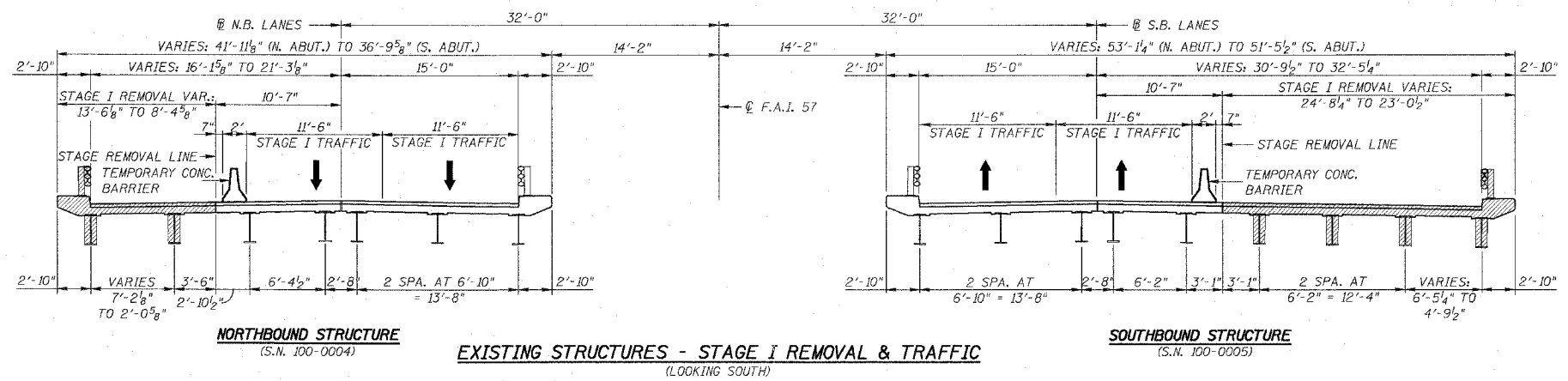
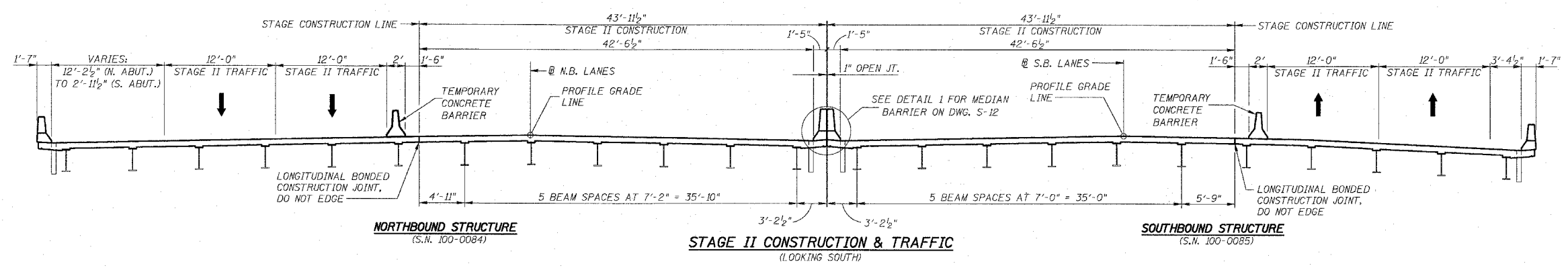
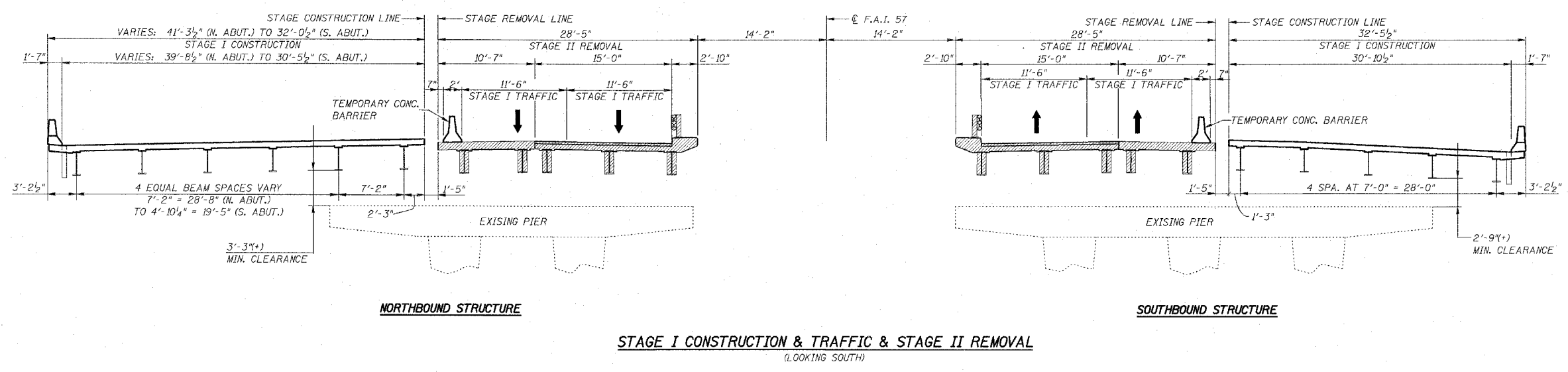


Contract #98950



- NOTES:**
1. HATCHED AREA INDICATES REMOVAL OF EXISTING STRUCTURES.
 2. REMOVAL OF EXISTING BRIDGE RAILING AND BITUMINOUS WEARING SURFACE IS INCLUDED IN REMOVAL OF EXISTING STRUCTURES.
 3. SEE DWG. S-28 FOR TEMPORARY CONCRETE BARRIER DETAILS.
 4. FOR QUANTITIES OF TEMPORARY CONCRETE BARRIER SEE ROADWAY PLANS.
 5. THE CONTRACTOR SHALL NOT REMOVE ANY PORTION OF THE EXISTING PIERS UNTIL AFTER STAGE I CONSTRUCTION IS COMPLETED AND TRAFFIC IS TRANSFERRED TO THE STAGE I TRAFFIC LANES. DURING THE REMOVAL OF THE EXISTING PIERS, THE CONTRACTOR SHALL TAKE NECESSARY PRECAUTIONS TO AVOID DAMAGING THE PROPOSED NEW STRUCTURAL STEEL.
 6. THE EXISTING ABUTMENTS SHALL BE REMOVED IN STAGES ALONG THE SAME LINE AS FOR REMOVAL OF THE EXISTING SUPERSTRUCTURE. SEE DWG. S-3 FOR ADDITIONAL DETAILS.



STAGE CONSTRUCTION DETAILS

INTERSTATE 57 OVER
 WEST MAIN ST. (OLD IL RT. 13)
 F.A.I. RT. 57 SEC. (X1-6)HBK-2
 WILLIAMSON COUNTY
 STATION 1529+96.11
 STRUCTURE NO. 100-0084 (N.B.)
 STRUCTURE NO. 100-0085 (S.B.)

DESIGN FIRM REGISTRATION
 No. 184-000450

Clark Dietz
 ENGINEERS

1817 SOUTH NEIL STREET
 SUITE 100
 CHAMPAIGN, IL 61820
 PHONE : 217.373.8900
 FAX : 217.373.8923

DESIGNED: B.G.H.
 CHECKED: L.D.G.
 DRAWN: K.H.L.
 CHECKED: B.G.H.

NOTE: DIMENSIONAL DATA IS NOT TO BE OBTAINED BY SCALING ANY PORTION OF THIS DRAWING.

DESIGNED BY: SHM PROJECT NO: 102314
 DRAWN BY: MEW DATE: 05/2006
 CHECKED BY: SLD
 APPROVED BY: SHM
 ACTIVITY INITIALS

DRAWING NUMBER
S-4