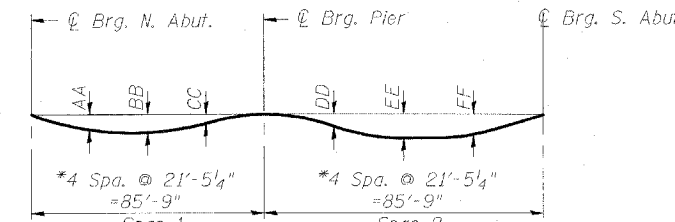


Contract #98950



**DEAD LOAD DEFLECTION DIAGRAM**

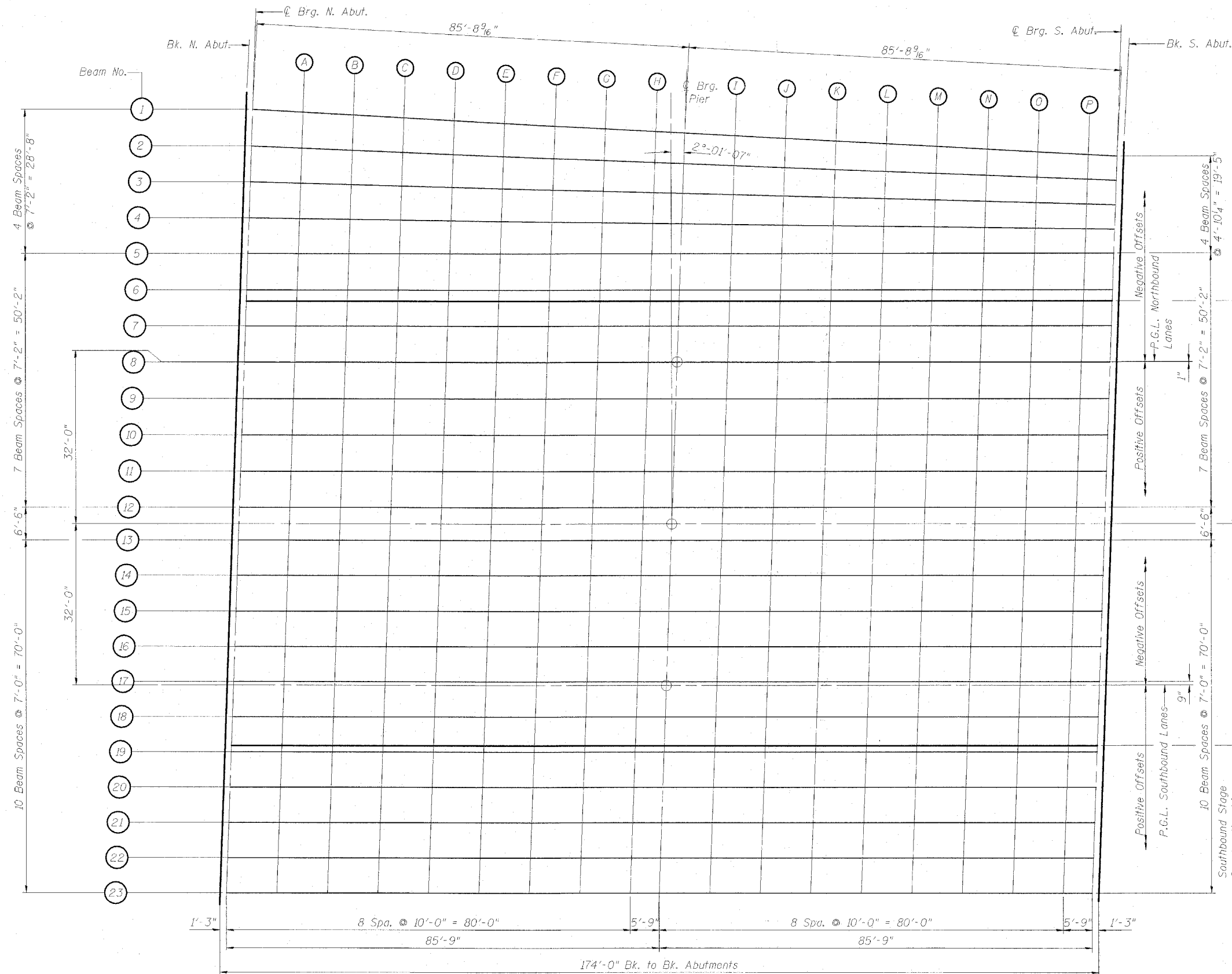
(Includes weight of concrete only.)  
\*For Beams 5 to 23. Beams 1 to 4 similar.

**TABLE OF DEFLECTIONS**

BEAM NO.	AA	BB	CC	DD	EE	FF
Beam 1	1 <sup>9</sup> / <sub>16</sub> "	1 <sup>7</sup> / <sub>8</sub> "	7 <sup>8</sup> / <sub>8</sub> "	3 <sup>4</sup> / <sub>4</sub> "	1 <sup>5</sup> / <sub>8</sub> "	1 <sup>3</sup> / <sub>8</sub> "
Beams 2 to 4	1 <sup>7</sup> / <sub>16</sub> "	1 <sup>13</sup> / <sub>16</sub> "	7 <sup>8</sup> / <sub>8</sub> "	9 <sup>16</sup> / <sub>16</sub> "	1 <sup>5</sup> / <sub>16</sub> "	1 <sup>16</sup> / <sub>16</sub> "
Beam 5	1 <sup>7</sup> / <sub>16</sub> "	1 <sup>3</sup> / <sub>4</sub> "	7 <sup>8</sup> / <sub>8</sub> "	1 <sup>16</sup> / <sub>16</sub> "	1 <sup>1</sup> / <sub>2</sub> "	1 <sup>1</sup> / <sub>4</sub> "
Beams 6 to 11; 14 to 22	1 <sup>7</sup> / <sub>16</sub> "	1 <sup>3</sup> / <sub>4</sub> "	1 <sup>13</sup> / <sub>16</sub> "	1 <sup>13</sup> / <sub>16</sub> "	1 <sup>3</sup> / <sub>4</sub> "	1 <sup>7</sup> / <sub>16</sub> "
Beams 12, 13 & 23	1 <sup>9</sup> / <sub>16</sub> "	1 <sup>7</sup> / <sub>8</sub> "	7 <sup>8</sup> / <sub>8</sub> "	7 <sup>0</sup> / <sub>0</sub> "	1 <sup>7</sup> / <sub>8</sub> "	1 <sup>9</sup> / <sub>16</sub> "

Note:

The above deflections are not to be used in the field if the engineer is working from the grade elevations adjusted for dead load deflections as shown on Dwg. S-6 thru S-9.



**TOP OF DECK PLAN**

INTERSTATE 57 OVER  
WEST MAIN ST. (OLD IL RT. 13)  
F.A.I. RT. 57 SEC. (X1-6)HBK-2  
WILLIAMSON COUNTY  
STATION 1529+96.11  
STRUCTURE NO. 100-0084 (N.B.)  
STRUCTURE NO. 100-0085 (S.B.)



DESIGN FIRM REGISTRATION  
No. 184-000450  
1817 SOUTH NEIL STREET  
SUITE 100  
CHAMPAIGN, IL 61820  
PHONE : 217.373.8900  
FAX : 217.373.8923

NOTE: DIMENSIONAL DATA IS NOT TO BE OBTAINED BY SCALING ANY PORTION OF THIS DRAWING.

DESIGNED BY: SMM PROJECT NO: 102314  
DRAWN BY: MEW DATE: 05/2006  
CHECKED BY: SLD  
APPROVED BY: SMM  
ACTIVITY INITIALS

DRAWING NUMBER  
**S-5**