

**NORTHBOUND  
BILL OF MATERIAL**

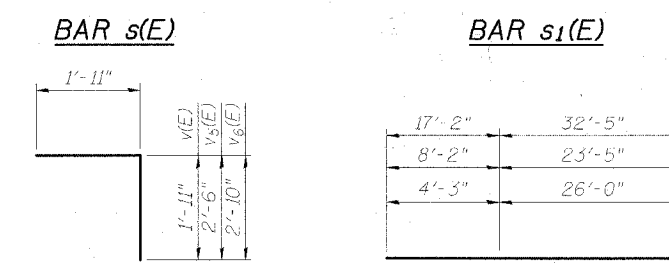
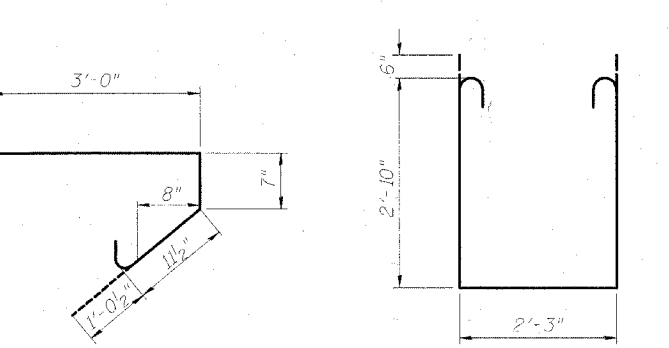
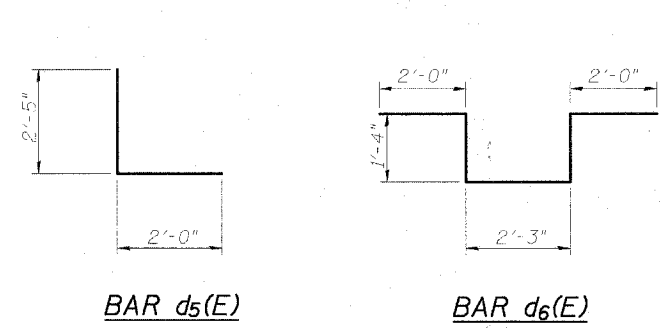
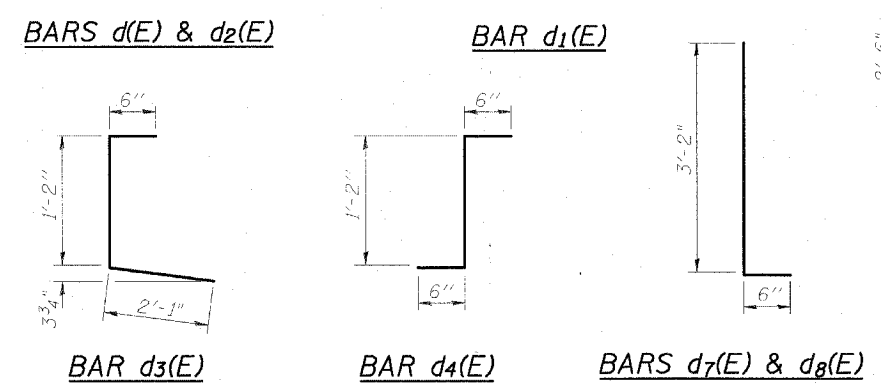
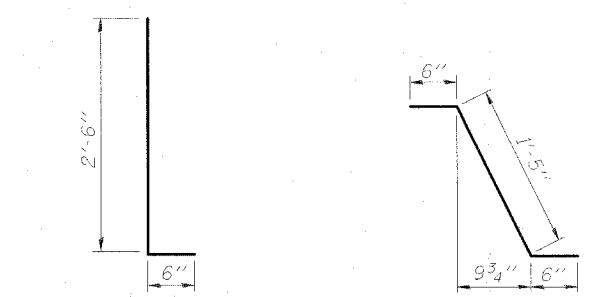
Bar No.	Size	Length	Shape
a(E)	318	#5	17'-6"
a <sub>1</sub> (E)	80	#5	25'-6"
a <sub>2</sub> (E)	79	#5	23'-2"
a <sub>3</sub> (E)	79	#5	20'-10"
a <sub>4</sub> (E)	79	#5	18'-6"
a <sub>5</sub> (E)	1	#5	49'-7"
a <sub>6</sub> (E)	1	#5	31'-7"
a <sub>7</sub> (E)	1	#5	30'-3"
a <sub>8</sub> (E)	1	#5	16'-3"
a <sub>9</sub> (E)	230	#5	22'-4"
a <sub>10</sub> (E)	58	#5	20'-0"
a <sub>11</sub> (E)	57	#5	17'-8"
a <sub>12</sub> (E)	57	#5	15'-5"
a <sub>13</sub> (E)	58	#5	13'-1"
a <sub>14</sub> (E)	318	#6	4'-6"
a <sub>15</sub> (E)	2	#5	40'-10"
a <sub>16</sub> (E)	2	#5	31'-6"
a <sub>20</sub> (E)	324	#5	43'-7"
a <sub>21</sub> (E)	232	#5	42'-11"
b(E)	534	#5	30'-9"
b <sub>1</sub> (E)	86	#6	49'-0"
b <sub>2</sub> (E)	504	#5	26'-8"
d(E)	190	#5	3'-0"
d <sub>1</sub> (E)	374	#5	2'-5"
d <sub>2</sub> (E)	190	#4	3'-0"
d <sub>3</sub> (E)	380	#4	3'-9"
d <sub>4</sub> (E)	6	#5	2'-2"
d <sub>5</sub> (E)	6	#6	4'-5"
d <sub>6</sub> (E)	10	#6	8'-11"
d <sub>7</sub> (E)	190	#5	3'-8"
d <sub>8</sub> (E)	190	#4	3'-8"
e(E)	112	#4	18'-1"
e <sub>1</sub> (E)	24	#4	13'-0"
e <sub>2</sub> (E)	24	#8	27'-0"
e <sub>3</sub> (E)	8	#8	13'-0"
e <sub>4</sub> (E)	24	#5	25'-8"
e <sub>5</sub> (E)	8	#5	13'-0"
m(E)	2	#6	40'-3"
m <sub>1</sub> (E)	10	#6	43'-7"
m <sub>2</sub> (E)	3	#6	41'-0"
m <sub>3</sub> (E)	12	#6	7'-8"
m <sub>4</sub> (E)	36	#6	9'-7"
m <sub>5</sub> (E)	4	#6	2'-11"
m <sub>6</sub> (E)	16	#6	6'-10"
m <sub>7</sub> (E)	2	#6	2'-0"
m <sub>8</sub> (E)	5	#6	4'-8"
m <sub>9</sub> (E)	2	#6	31'-0"
m <sub>10</sub> (E)	3	#6	31'-9"
s(E)	160	#5	5'-7"
s <sub>1</sub> (E)	138	#4	8'-11"
v(E)	66	#5	3'-10"
v <sub>5</sub> (E)	94	#5	4'-5"
Reinforcement Bars, Epoxy Coated	Pound	100,520	
Concrete Superstructure	Cu. Yds.	435.0	
Bar Splicers	Each	740	

Bars indicated thus 1 x 3-#5 etc. indicates 1 line of bars with 3 lengths per line.

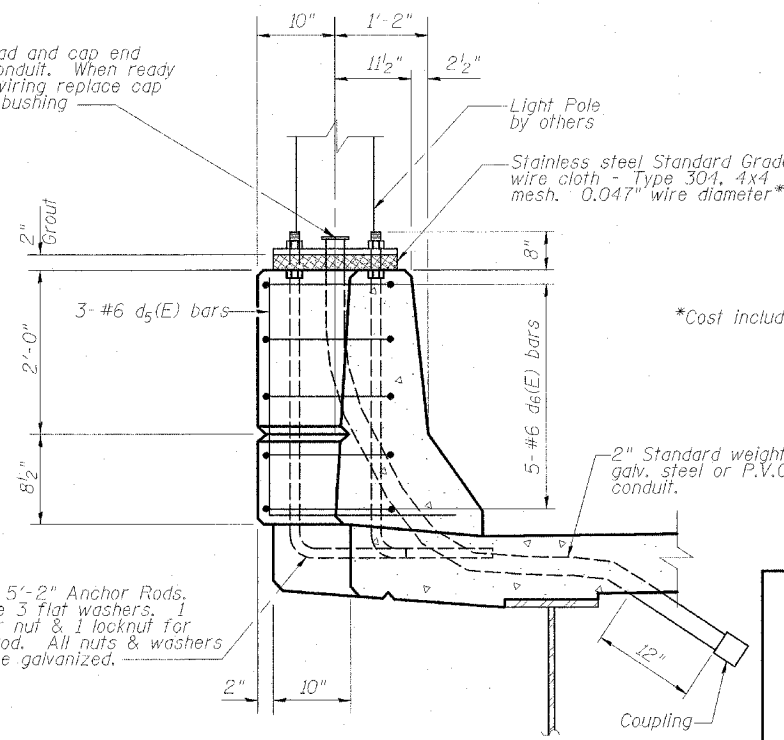
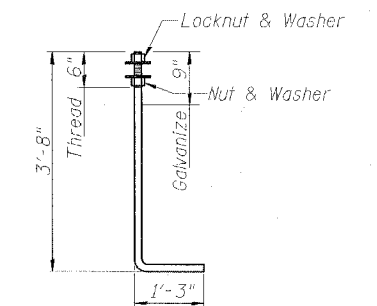
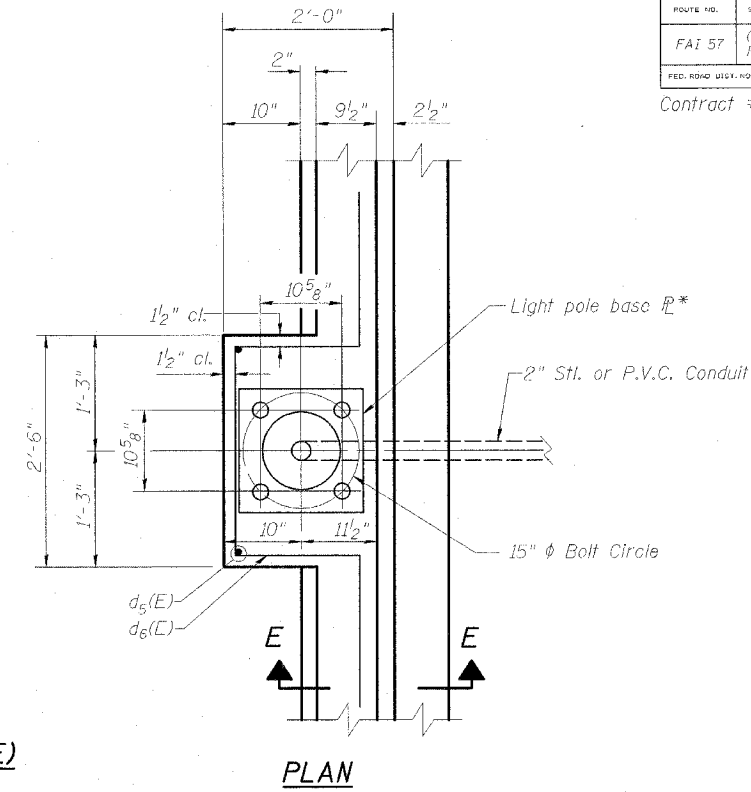
**SOUTHBOUND  
BILL OF MATERIAL**

Bar No.	Size	Length	Shape
a <sub>14</sub> (E)	318	#6	4'-6"
a <sub>20</sub> (E)	324	#5	43'-7"
a <sub>21</sub> (E)	232	#5	42'-11"
a <sub>30</sub> (E)	324	#5	32'-1"
a <sub>31</sub> (E)	232	#5	31'-5"
b(E)	480	#5	30'-9"
b <sub>1</sub> (E)	77	#6	49'-0"
b <sub>2</sub> (E)	462	#5	26'-8"
d(E)	190	#5	3'-0"
d <sub>1</sub> (E)	374	#5	2'-5"
d <sub>2</sub> (E)	190	#4	3'-0"
d <sub>3</sub> (E)	380	#4	3'-9"
d <sub>4</sub> (E)	6	#5	2'-2"
d <sub>5</sub> (E)	6	#6	4'-5"
d <sub>6</sub> (E)	10	#6	8'-11"
d <sub>7</sub> (E)	190	#5	3'-8"
d <sub>8</sub> (E)	190	#4	3'-8"
e(E)	112	#4	18'-1"
e <sub>1</sub> (E)	24	#4	13'-0"
e <sub>2</sub> (E)	24	#8	27'-0"
e <sub>3</sub> (E)	8	#8	13'-0"
e <sub>4</sub> (E)	24	#5	25'-8"
e <sub>5</sub> (E)	8	#5	13'-0"
m <sub>1</sub> (E)	10	#6	43'-7"
m <sub>4</sub> (E)	40	#6	9'-7"
m <sub>5</sub> (E)	4	#6	2'-11"
m <sub>11</sub> (E)	2	#6	5'-6"
m <sub>12</sub> (E)	4	#6	31'-2"
m <sub>13</sub> (E)	6	#6	32'-2"
m <sub>14</sub> (E)	18	#6	6'-9"
m <sub>15</sub> (E)	2	#6	1'-0"
s(E)	154	#5	5'-7"
s <sub>1</sub> (E)	132	#4	8'-11"
v(E)	30	#5	3'-10"
v <sub>5</sub> (E)	56	#5	4'-5"
v <sub>6</sub> (E)	66	#5	4'-9"
Reinforcement Bars, Epoxy Coated	Pound	92,500	
Concrete Superstructure	Cu. Yds.	414.4	
Bar Splicers	Each	722	

Reinforcement Bars, Epoxy Coated  
Concrete Superstructure  
Bar Splicers



**BAR CUTTING DIAGRAM**



Note: Cost of anchor bolts and conduit included with Concrete Superstructure.

**SUPERSTRUCTURE BILL OF MATERIAL & LIGHT POLE BASE**  
 INTERSTATE 57 OVER  
 WEST MAIN ST. (OLD IL RT. 13)  
 F.A.I. RT. 57 SEC. (XI-6)HDK-2  
 WILLIAMSON COUNTY  
 STATION 1529+96.11  
 STRUCTURE NO. 100-0084 (N.B.)  
 STRUCTURE NO. 100-0085 (S.B.)

DESIGN FIRM REGISTRATION No. 184-000450  
**Clark Dietz ENGINEERS**  
 1817 SOUTH NEIL STREET SUITE 100  
 CHAMPAIGN, IL 61820  
 PHONE : 217.373.8900  
 FAX : 217.373.8923

NOTE: DIMENSIONAL DATA IS NOT TO BE OBTAINED BY SCALING ANY PORTION OF THIS DRAWING.

DRAWING NUMBER: **S-15**

DESIGNED BY: SMM PROJECT NO: 102314  
 DRAWN BY: MEW DATE: 05/2005  
 CHECKED BY: SLD  
 APPROVED BY: SMM  
 ACTIVITY INITIALS