

Contract #98950

**NOTES**

1. Pour steps monolithically with cap.
2. The Steel H-Piles shall be according to AASHTO M270 Grade 50.
3. The test pile shall be driven to 110 percent of the Nominal Required Bearing indicated in the pile data information.

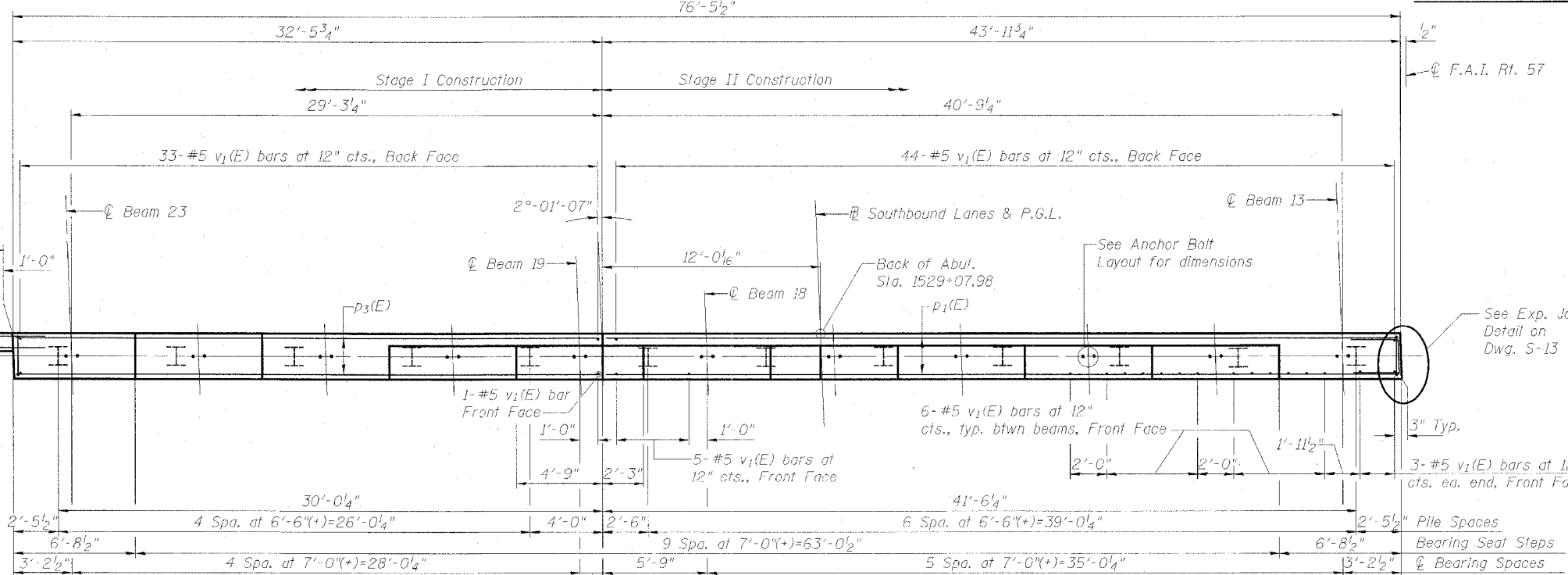
**SOUTHBOUND  
NORTH ABUTMENT  
BILL OF MATERIAL**

Bar	No.	Size	Length	Shape
h(E)	16	#5	9'-8"	—
h <sub>2</sub> (E)	2	#5	43'-7"	—
h <sub>4</sub> (E)	2	#5	18'-5"	—
h <sub>5</sub> (E)	2	#5	29'-11"	—
h <sub>6</sub> (E)	2	#5	4'-5"	—
p <sub>1</sub> (E)	12	#7	43'-7"	—
p <sub>3</sub> (E)	12	#7	32'-1"	—
s <sub>2</sub> (E)	70	#4	11'-5"	□
u(E)	9	#6	7'-2"	—
u <sub>1</sub> (E)	35	#5	3'-0"	—
u <sub>4</sub> (E)	63	#5	3'-8"	—
v <sub>1</sub> (E)	143	#5	4'-4"	—
v <sub>2</sub> (E)	8	#5	10'-4"	—
Concrete Structures		Cu. Yds.	31.8	
Reinforcement Bars, Epoxy Coated		Pound	3,930	
Structure Excavation		Cu. Yds.	159	
Furnishing Steel Piles, HP12x53		Foot	429	
Driving Piles		Foot	429	
Test Pile Steel HP12x53		Each	1	
Bar Splicers		Each	16	
Concrete Encasement		Cu. Yds.	4.2	

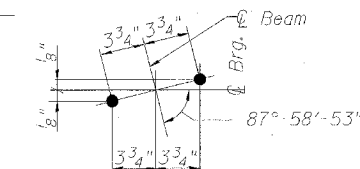
**PILE DATA**

Type: HP12x53  
 Nominal Req'd Bearing: 420k  
 Allowable Resistance Available: 140k  
 Est. Length: 39'  
 No. Req'd: 11 + 1 Test Pile

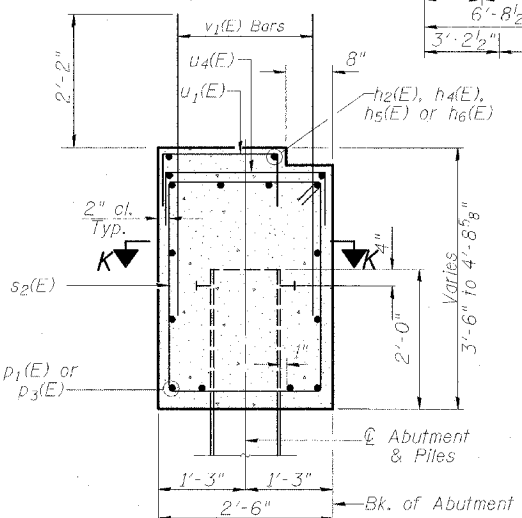
**ELEVATION  
(Looking North)**



**ANCHOR BOLT LAYOUT**

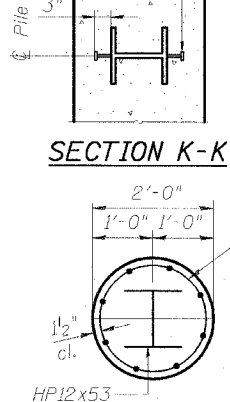


**PLAN**

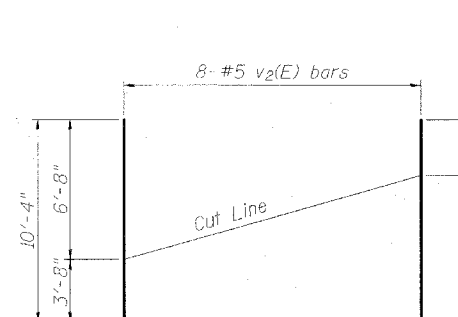


**SECTION THRU ABUTMENT**

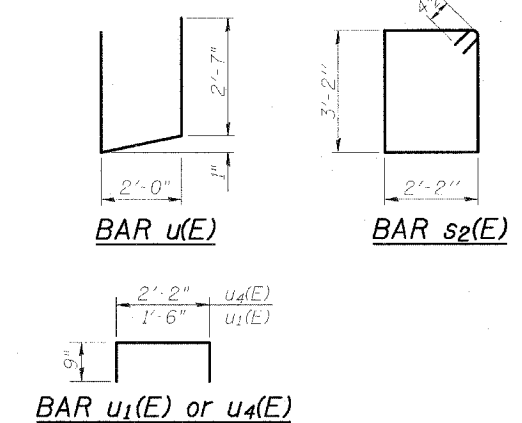
**SECTION K-K**



**PILE ENCASEMENT DETAIL**



**FIELD CUTTING DIAGRAM**



**BAR u<sub>1</sub>(E) or u<sub>4</sub>(E)**

**NORTH ABUTMENT, SOUTHBOUND**

INTERSTATE 57 OVER  
 WEST MAIN ST. (OLD IL RT. 13)  
 F.A.I. RT. 57 SEC. (XI-6)H&K-2  
 WILLIAMSON COUNTY  
 STATION 1529+96.11  
 STRUCTURE NO. 100-0084 (N.B.)  
 STRUCTURE NO. 100-0085 (S.B.)

DESIGN FIRM REGISTRATION  
 No. 184-000450  
**Clark Dietz**  
 ENGINEERS  
 1817 SOUTH NEIL STREET  
 SUITE 100  
 CHAMPAIGN, IL 61820  
 PHONE : 217.373.8900  
 FAX : 217.373.8923

DESIGNED BY: SMM	PROJECT NO: 102314
DRAWN BY: MEW	DATE: 05/2006
CHECKED BY: SLD	
APPROVED BY: SMM	
ACTIVITY	INITIALS