

Contract #98950

**NOTES**

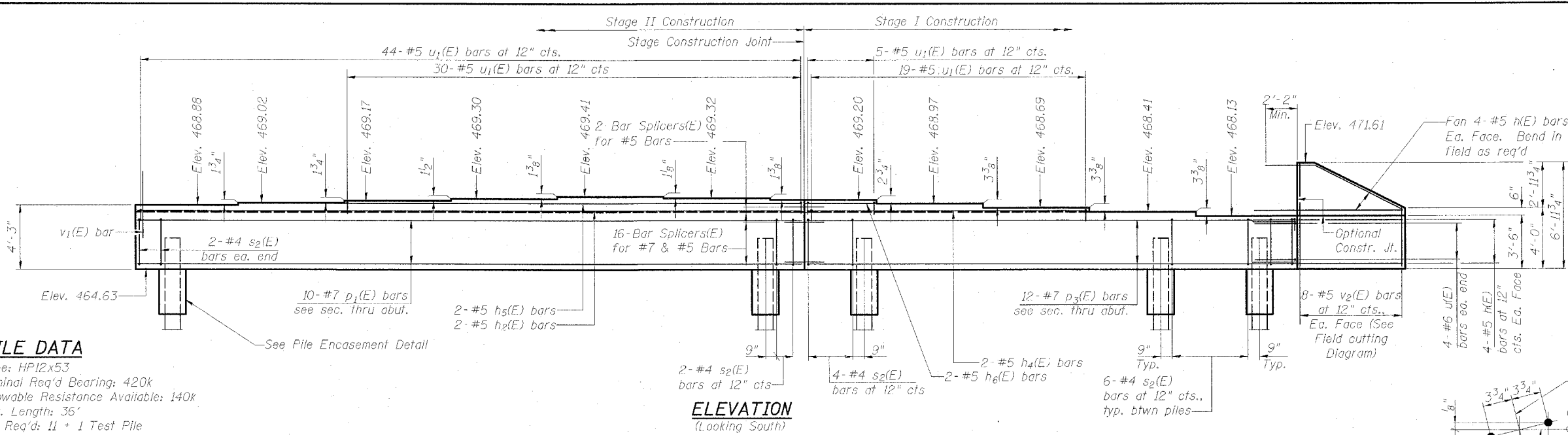
1. Pour steps monolithically with cap.
2. The Steel H-Piles shall be according to AASHTO M270 Grade 50.
3. The test pile shall be driven to 110 percent of the Nominal Required Bearing indicated in the pile data information.

**SOUTHBOUND SOUTH ABUTMENT BILL OF MATERIAL**

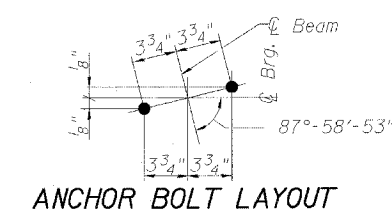
Bar	No.	Size	Length	Shape	
h(E)	16	#5	9'-8"	—	
h <sub>2</sub> (E)	2	#5	43'-7"	—	
h <sub>4</sub> (E)	2	#5	18'-5"	—	
h <sub>5</sub> (E)	2	#5	29'-11"	—	
h <sub>6</sub> (E)	2	#5	4'-5"	—	
p <sub>1</sub> (E)	12	#7	43'-7"	—	
p <sub>3</sub> (E)	12	#7	32'-1"	—	
s <sub>2</sub> (E)	70	#4	11'-5"	□	
u(E)	8	#6	7'-2"	—	
u <sub>1</sub> (E)	98	#5	3'-0"	—	
v <sub>1</sub> (E)	143	#5	4'-4"	—	
v <sub>2</sub> (E)	8	#5	10'-4"	—	
Concrete Structures				Cu. Yds.	32.1
Reinforcement Bars, Epoxy Coated				Pound	3,880
Structure Excavation				Cu. Yds.	161
Furnishing Steel Piles, HP12x53				Foot	396
Driving Piles				Foot	396
Test Pile Steel HP12x53				Each	1
Bar Splicers				Each	16
Concrete Encasement				Cu. Yds.	4.2

**PILE DATA**

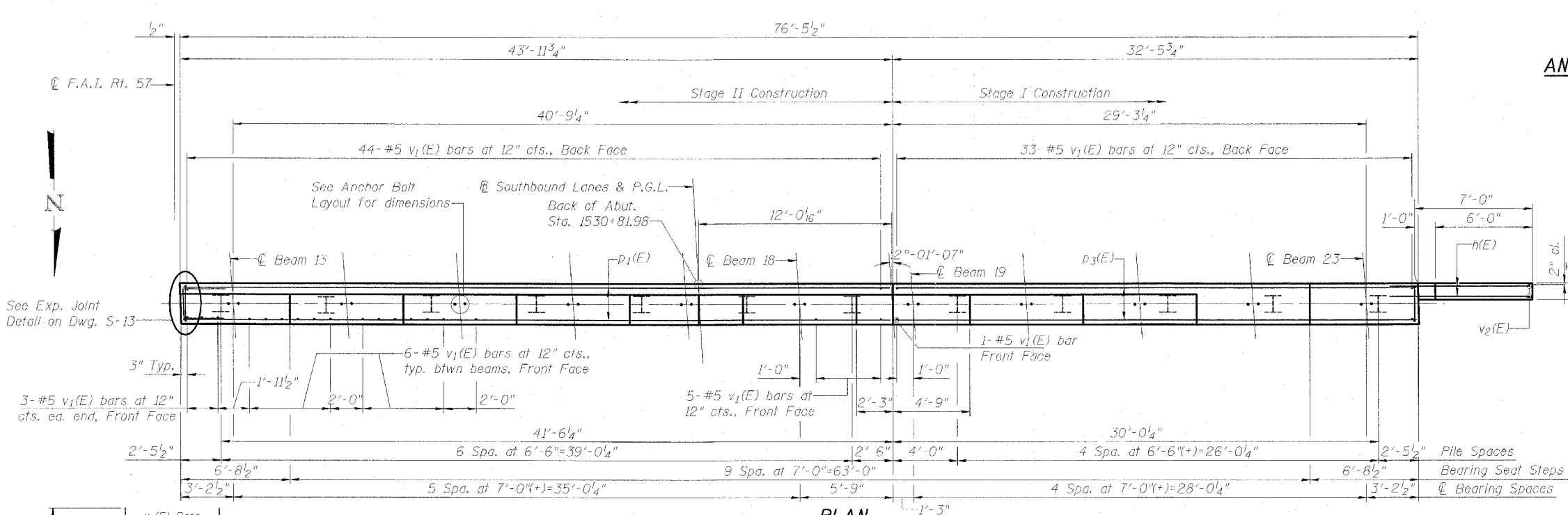
Type: HP12x53  
 Nominal Req'd Bearing: 420k  
 Allowable Resistance Available: 140k  
 Est. Length: 36'  
 No. Req'd: 11 + 1 Test Pile



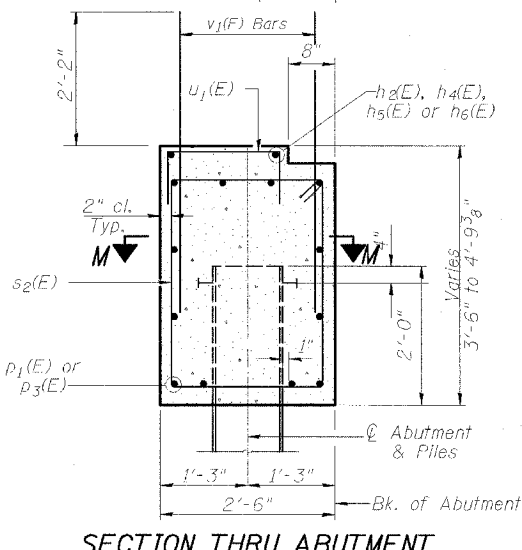
**ELEVATION**  
(Looking South)



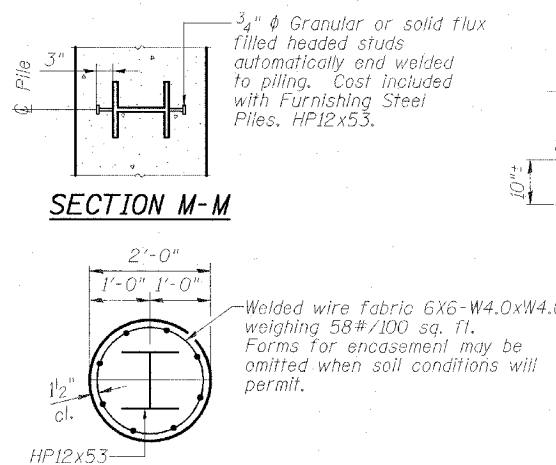
**ANCHOR BOLT LAYOUT**



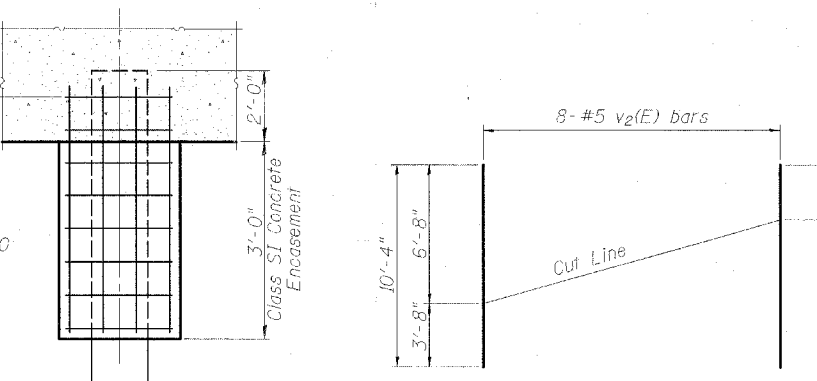
**PLAN**



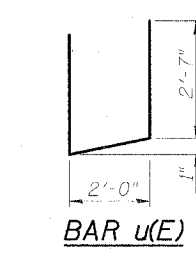
**SECTION THRU ABUTMENT**



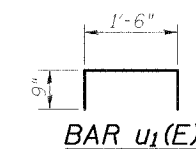
**PILE ENCASEMENT DETAIL**



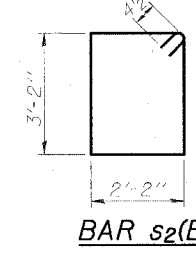
**FIELD CUTTING DIAGRAM**  
Order v<sub>2</sub>(E) bars full length. Cut as shown and use remainder of bars in opposite end.



**BAR u(E)**



**BAR u<sub>1</sub>(E)**



**BAR s<sub>2</sub>(E)**

REVISIONS	
NAME	DATE

**SOUTH ABUTMENT, SOUTHBOUND**

INTERSTATE 57 OVER  
 WEST MAIN ST. (OLD IL RT. 13)  
 F.A.I. RT. 57 SEC. (X1-6)HBK-2  
 WILLIAMSON COUNTY  
 STATION 1529+96.11  
 STRUCTURE NO. 100-0084 (N.B.)  
 STRUCTURE NO. 100-0085 (S.B.)

**Clark Dietz ENGINEERS**

DESIGN FIRM REGISTRATION No. 184-000450  
 1817 SOUTH NEIL STREET SUITE 100  
 CHAMPAIGN, IL 61820  
 PHONE : 217.373.8900  
 FAX : 217.373.8923

DESIGNED BY: SMM	PROJECT NO: 102314	DRAWING NUMBER <b>S-22</b>
CHECKED BY: MEW	DATE: 05/20/06	
APPROVED BY: SMM		
ACTIVITY: DETAILS		