

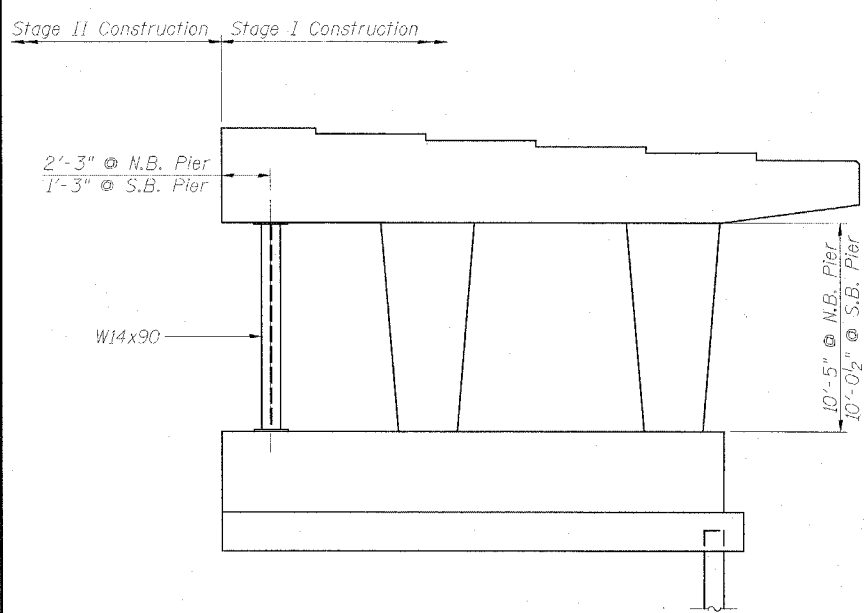
SECTION T-T
(THRU CAP BEAM AND CRASHWALL)

NOTE: Some reinforcement omitted for clarity.

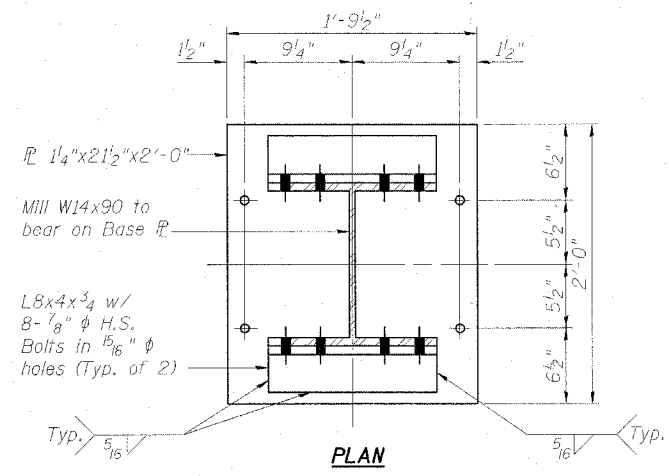
ELEVATION

PIER SKETCH

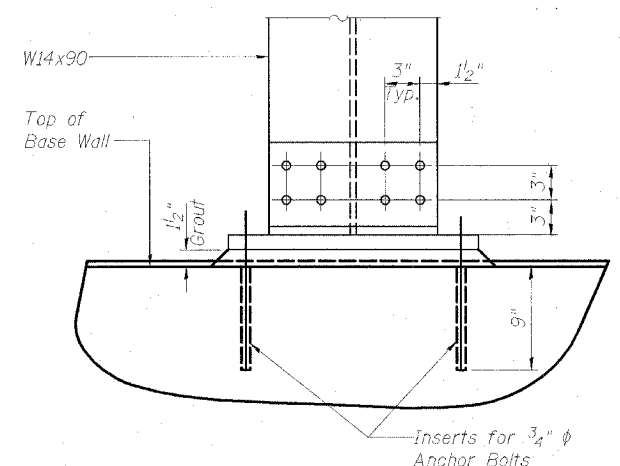
END VIEW



ELEVATION
NORTHBOUND PIER
(Looking North)
SOUTHBOUND PIER
(Looking South)

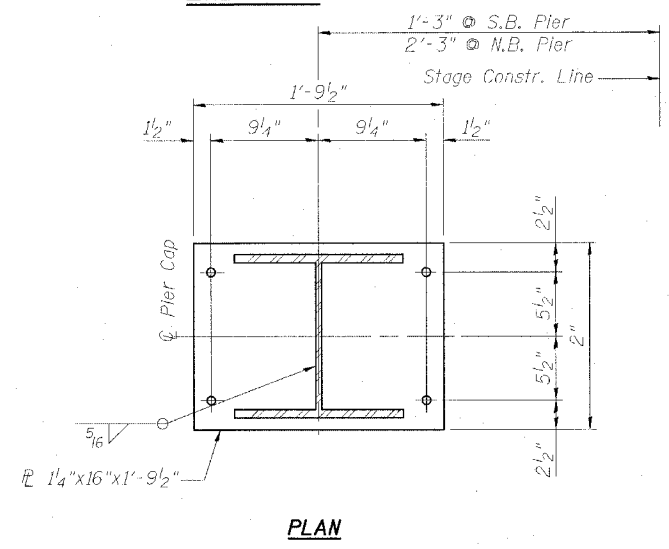


PLAN

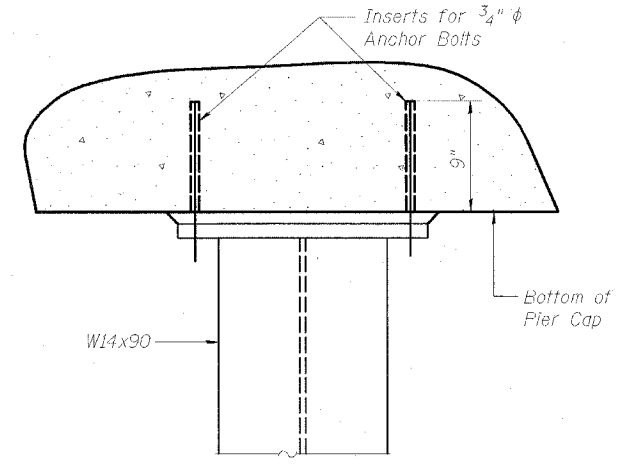


ELEVATION

BOTTOM BASE PLATE
Note: Grout shall be non-shrink.



PLAN



ELEVATION

TOP BASE PLATE

NOTES:

1. Temporary Support System shall be installed prior to setting beams on new pier cap.
2. After removal of Temporary Support System patch concrete surface of base wall and cap to match surrounding areas.

BILL OF MATERIAL		
ITEM	UNIT	TOTAL
Temporary Support System	L.S.	1

PIER FORM LINER DETAILS AND TEMPORARY SUPPORT SYSTEM

INTERSTATE 57 OVER
WEST MAIN ST. (OLD IL RT. 13)
F.A.I. RT. 57 SEC. (XI-6)HKB-2
WILLIAMSON COUNTY
STATION 1529+96.11
STRUCTURE NO. 100-0084 (N.B.)
STRUCTURE NO. 100-0085 (S.B.)

DESIGN FIRM REGISTRATION No. 184-000450
Clark Dietz ENGINEERS
1817 SOUTH NEIL STREET SUITE 100
CHAMPAIGN, IL 61820
PHONE: 217.373.8900 FAX: 217.373.8923

DESIGNED BY: SMM	PROJECT NO: 102314	DRAWING NUMBER S-26
DRAWN BY: MEW	DATE: 05/2006	
CHECKED BY: SLD		
APPROVED BY: SMM		
ACTIVITY	INITIALS	