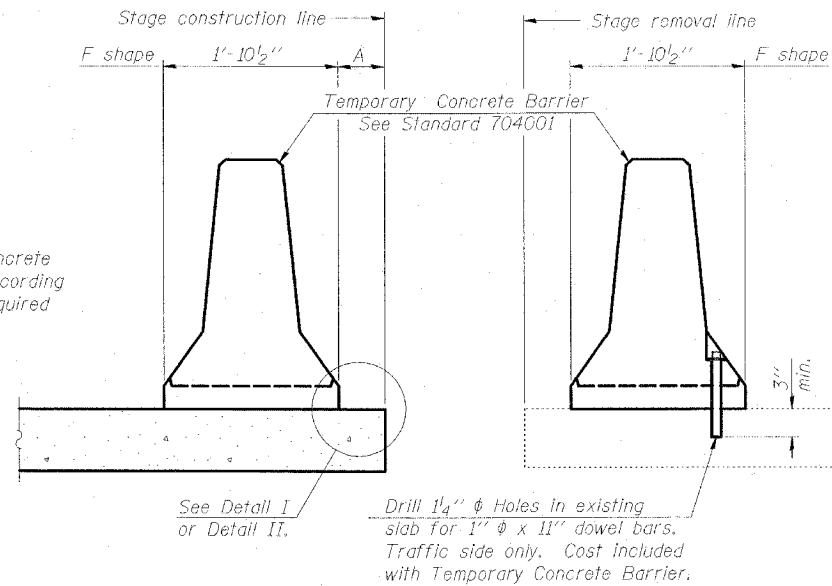


Contract #98950

NOTES

- Detail I - With Bar Splicer or Couplers:
Connect one (1) 1"x7"x10" steel PL to the top layer of couplers with 2-5/8" φ bolts, screwed to coupler at approximate C of each barrier panel.
- Detail II - With Extended Reinforcement Bars:
Connect one (1) 1"x7"x10" steel PL to the concrete slab with 2-5/8" φ Expansion Anchors or cast in place inserts spaced between the top layer of reinforcement at approximate C of each barrier panel.
- Cost of anchorage is included with Temporary Concrete Barrier.

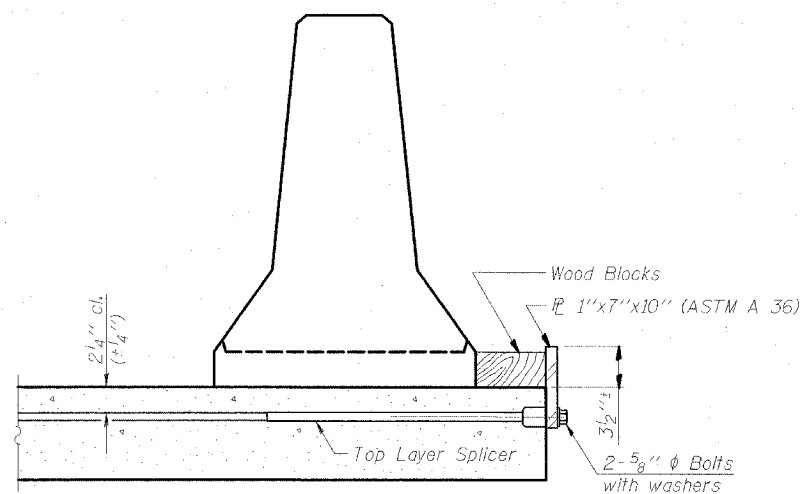
When "A" is 3'-6" or less, the temporary concrete barrier shall be anchored to the new slab according to Detail I or Detail II. No anchorage is required when "A" is greater than 3'-6".



NEW SLAB

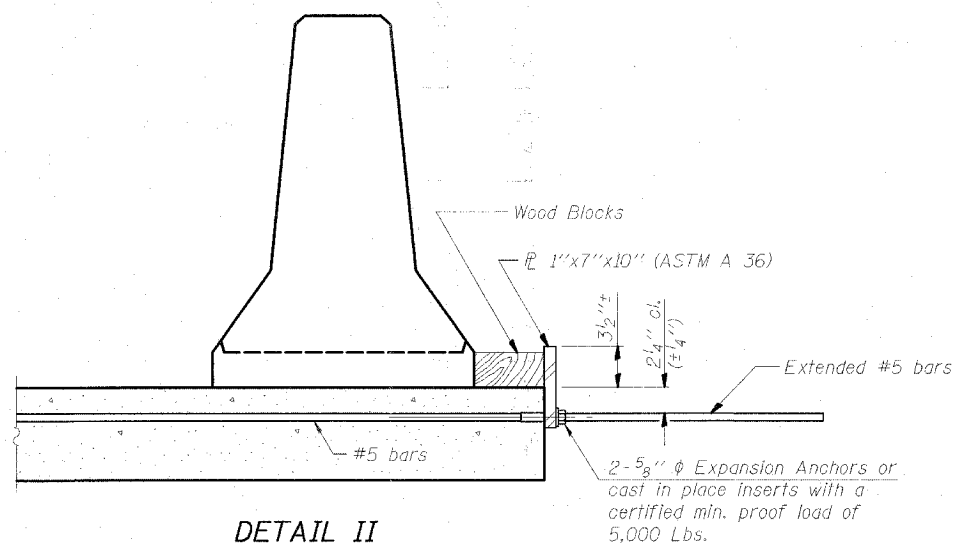
EXISTING SLAB

SECTIONS THRU SLAB



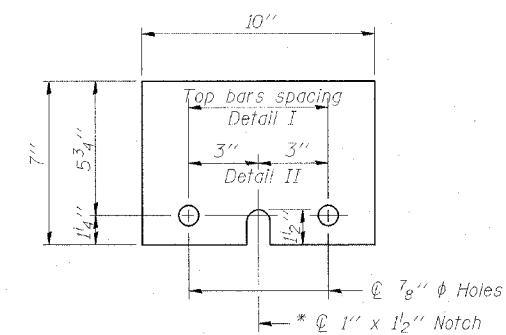
DETAIL I

The 1"x7"x10" Plate shall not be removed until Stage II Construction forms and reinforcement bars are in place.



DETAIL II

The 1"x7"x10" Plate shall not be removed until Stage II Construction forms and all reinforcement bars are in place and the concrete is ready to be placed.



PL 1"x7"x10"

* Required only with Detail II

TEMPORARY CONCRETE BARRIER FOR STAGE CONSTRUCTION
 INTERSTATE 57 OVER
 WEST MAIN ST. (OLD IL RT. 13)
 F.A.I. RT. 57 SEC. (X1-6)HBK-2
 WILLIAMSON COUNTY
 STATION 1529+96.11
 STRUCTURE NO. 100-0084 (N.B.)
 STRUCTURE NO. 100-0085 (S.B.)

DESIGN FIRM REGISTRATION
 No. 184-000450
Clark Dietz
 ENGINEERS
 1817 SOUTH NEIL STREET
 SUITE 100
 CHAMPAIGN, IL 61820
 PHONE : 217.373.8900
 FAX : 217.373.8923

NOTE: DIMENSIONAL DATA IS NOT TO BE OBTAINED BY SCALING ANY PORTION OF THIS DRAWING.

DESIGNED BY: SMM	PROJECT NO: 102314
DRAWN BY: MEW	DATE: 05/2006
CHECKED BY: SLD	
APPROVED BY: SMM	
ACTIVITY	INITIALS

DRAWING NUMBER
S-28