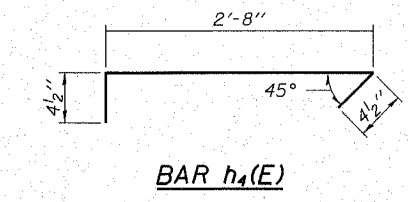
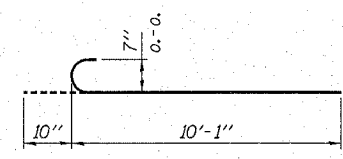


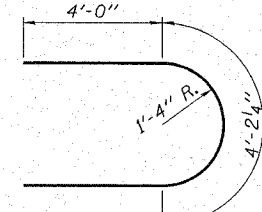
PLAN



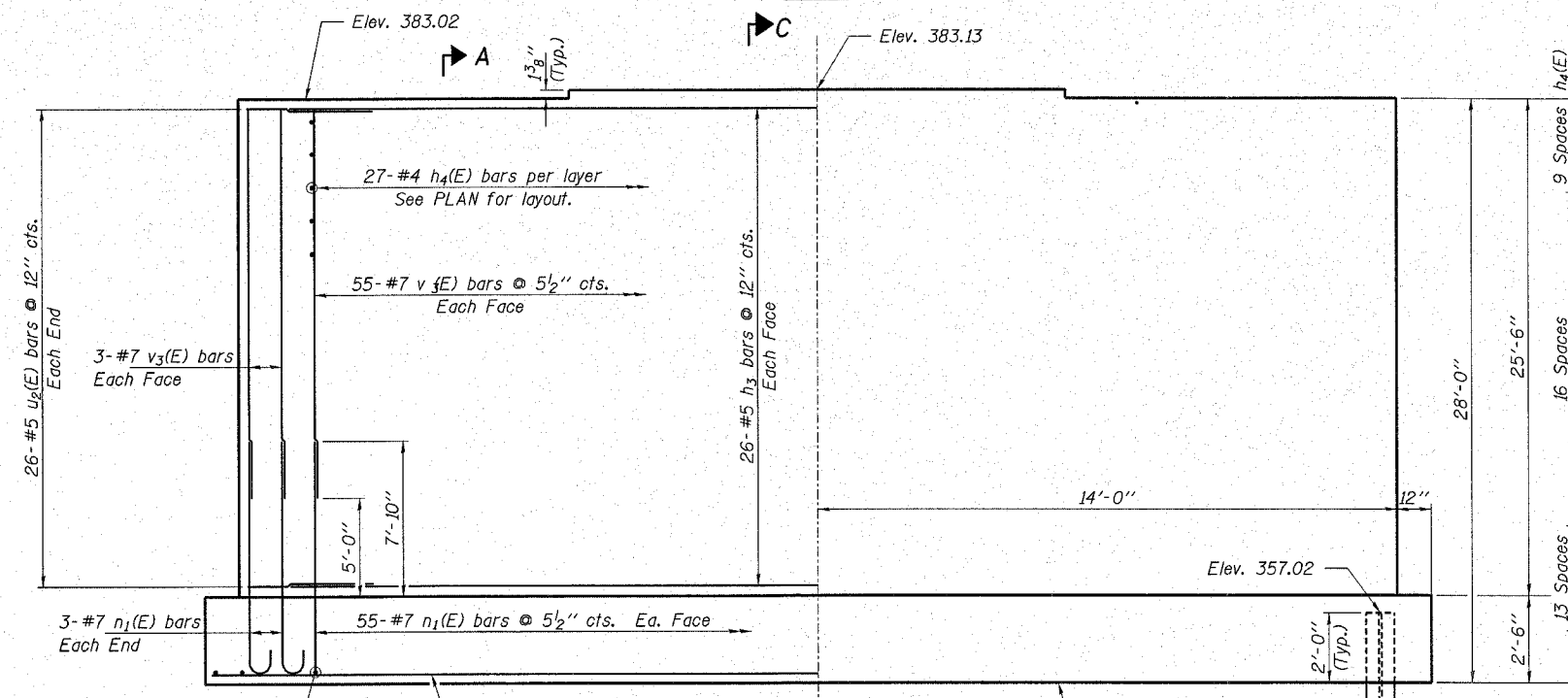
BAR h₄(E)



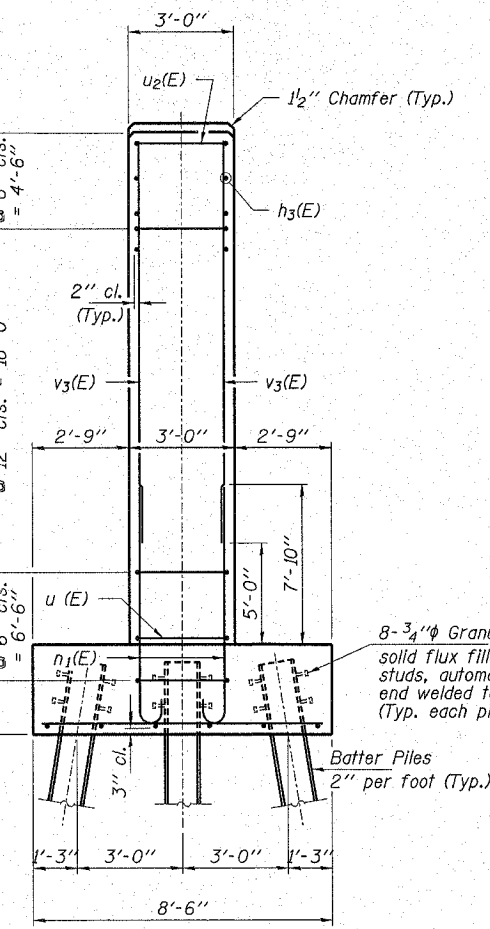
BAR n₁(E)



BAR u₂(E)



ELEVATION
(Looking East)



END VIEW

PILE DATA

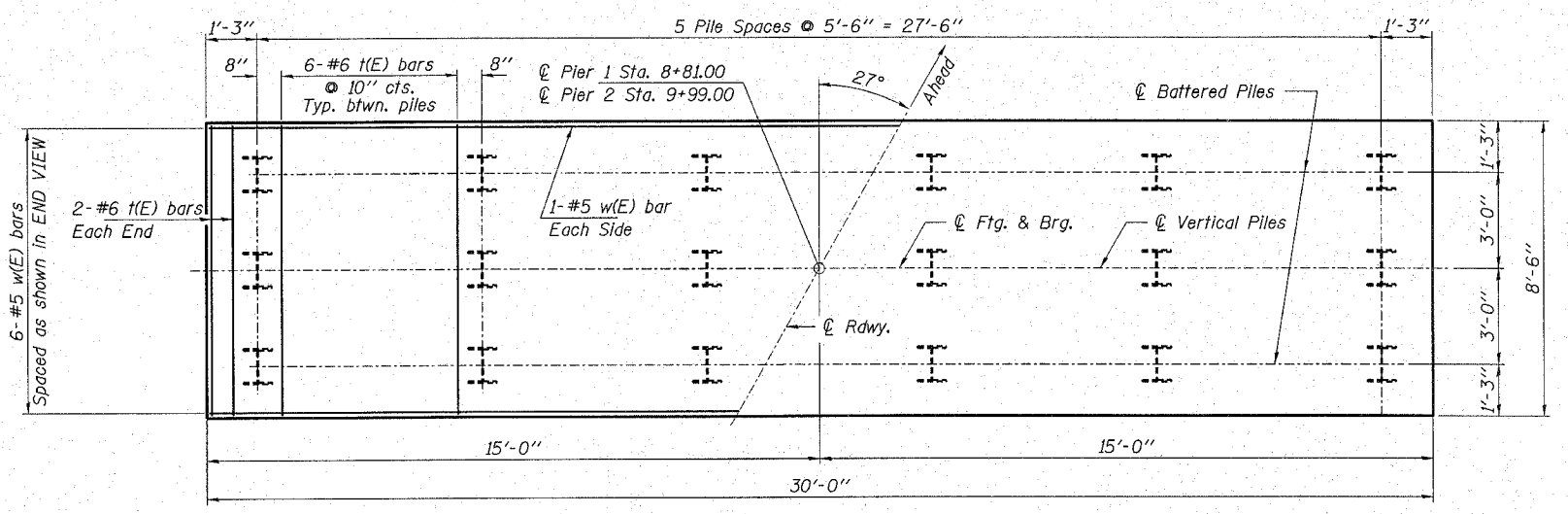
Type Steel HP12x63
 No. Req'd. (2 Piers.) *36
 Nominal Required Bearing 462 kips/pile
 Allowable Resistance Available 154 kips/pile
 Estimated Lengths 85 Ft/Pile

The Steel H-piles shall be according to AASHTO M270 Grade 50.
 The test piles shall be driven to 110 percent of the Nominal Required Bearing indicated in the pile data information.
 * Includes one steel test pile to be driven in a permanent location at each Pier.

BILL OF MATERIAL - BOTH PIERS

BAR	NO.	SIZE	LENGTH	SHAPE
h ₃ (E)	104	#5	25'-0"	—
h ₄ (E)	2,106	#4	3'-5"	┌
n ₁ (E)	232	#7	10'-11"	—
t(E)	68	#6	8'-2"	—
u ₂ (E)	104	#5	12'-2"	—
v ₃ (E)	232	#7	20'-4"	—
w(E)	12	#5	29'-8"	—
Concrete Structures			Cu. Yd.	215.9
Reinforcement Bars, Epoxy Coated			Pound	24,870
Steel Piles HP 12x63			Foot	2,890
Test Pile Steel HP 12x63			Each	2
Structure Excavation			Cu. Yd.	256
Stud Shear Connectors			Each	288

Reinforcement Bars designated (E) shall be epoxy coated.



FOOTING PLAN

MIN. BAR LAP
#7 = 2'-8"

HAMPTON, LENZINI & RENWICK, INC.
 CIVIL & STRUCTURAL ENGINEERS
 LAND SURVEYORS

3085 STEVENSON DRIVE, SUITE 201
 SPRINGFIELD, ILLINOIS 62703
 (217) 546-3400

ELGIN • SPRINGFIELD

PROJECT NUMBER: 12-98-0013-1 DATE: 01/18/07
 DESIGNED: M.G.B. CHECKED: S.W.M. DRAWN: D.B.

PIERS

F.A.S. ROUTE 882
 SECTION 84-00059-00-BR
 WHITE COUNTY

STRUCTURE NO. 097-3186 / STATION 9+40