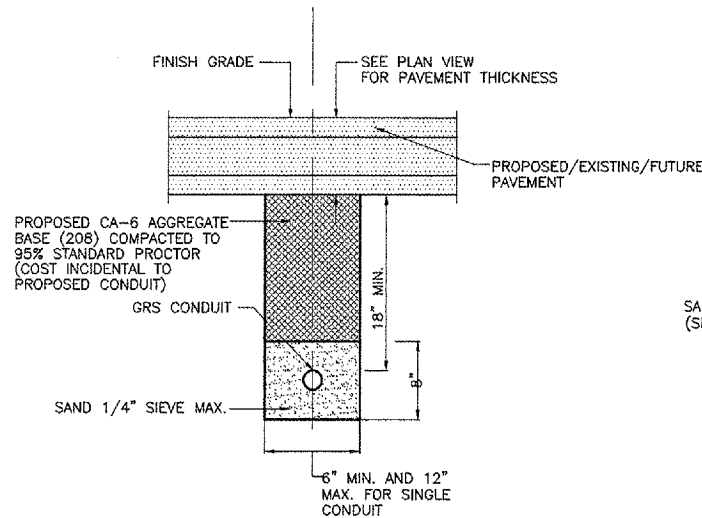
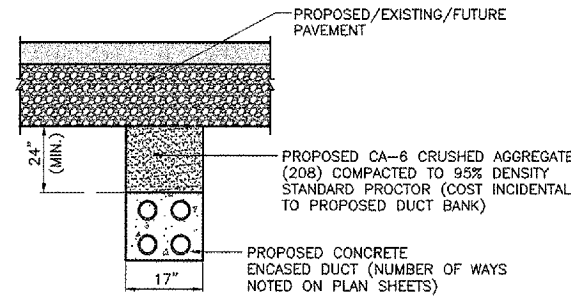


DATE: Thursday, March 08, 2007 9:01:31 PM  
 FILE: K:\laning\proj\0629702 Rehab 9-27\_Elect\Draw\Sheets\18\_elect-df-general.dwg  
 UPDATE BY: Jason Dove  
 LAYOUT: Layout1  
 REF DWG: 0629702.dwg  
 IMAGE FILES:

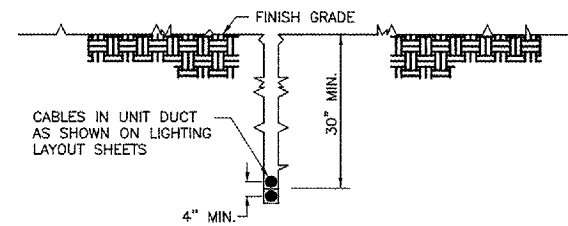


**PAVED AREA CABLE IN CONDUIT TRENCH DETAIL**  
N.T.S.

NOTE: CONDUIT SHALL BE INSTALLED AT AN ELEVATION THAT WILL NOT CONFLICT WITH THE OTHER UTILITIES SUCH AS SANITARY SEWER, STORM SEWER, WATERMAIN, UNDERDRAIN, AND ETC.

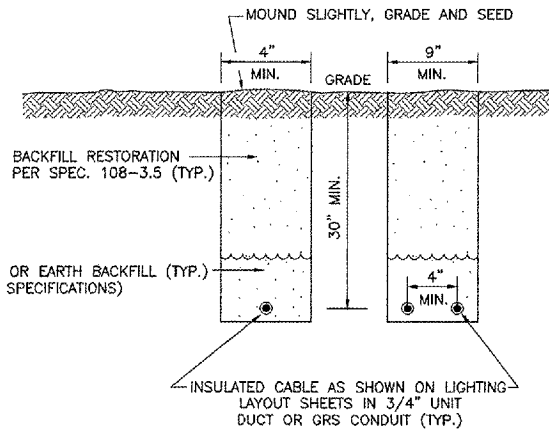


**CONCRETE ENCASED DUCT BACKFILL**  
NOT TO SCALE



**CABLE IN UNIT DUCT - PLOWED**  
NOT TO SCALE

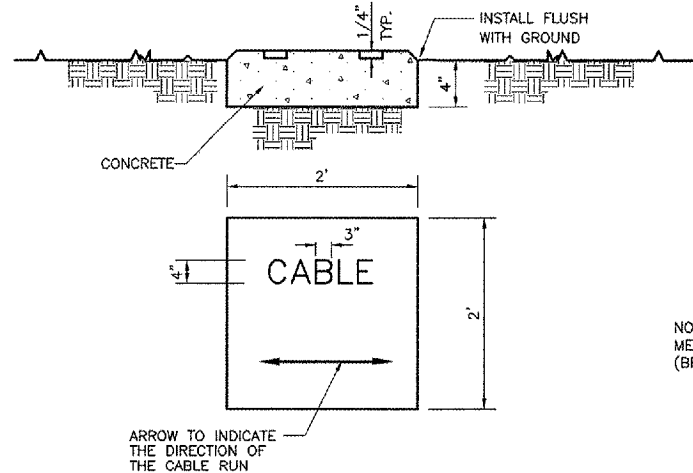
NOTE: CONTRACTOR SHALL HAVE THE OPTION TO TRENCH OR PLOW UNIT DUCT. NO ADDITIONAL PAYMENT SHALL BE MADE FOR TRENCHING.



**TURF AREA CABLE TRENCH DETAIL**  
NOT TO SCALE

**NOTES**

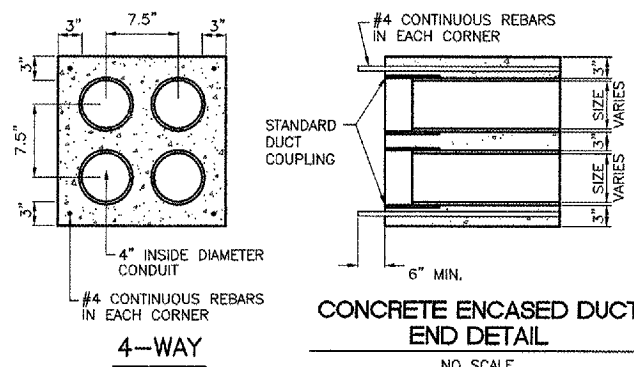
1. TRENCHES WITH MORE THAN 2 CABLES SHALL BE INCREASED 4" IN WIDTH FOR EACH ADDITIONAL CABLE. IF SPECIFIED ON PLANS, TWO PARALLEL TRENCHES MAY BE CONSTRUCTED.
2. DEPTH OF TRENCHES SHALL BE AS SHOWN UNLESS OTHERWISE SPECIFIED ON THE PLANS.
3. SAND BACKFILL SHALL BE USED IF THE EXISTING SOIL DOES NOT MEET THE BACKFILL REQUIREMENTS.
4. ALL DISTURBED SURFACES SHALL BE RESTORED TO THEIR ORIGINAL CONDITION. COST IS INCIDENTAL.



**TURF CABLE MARKER DETAIL**  
NO SCALE

**NOTES**

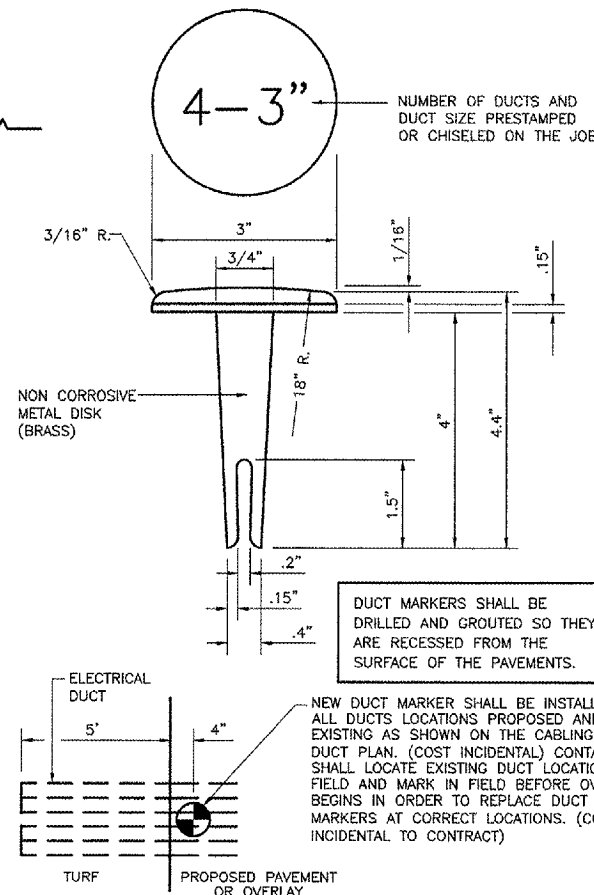
- 1.) CABLE MARKERS SHALL BE INSTALLED AT ALL BENDS AND EVERY 200' ALONG THE CABLE RUN.
- 2.) ITEM 610 CONCRETE SHALL BE USED.
- 3.) ALL EXPOSED EDGES SHALL BE EDGED WITH A 1/4" RADIUS TOOL.
- 4.) THE COST OF FURNISHING AND INSTALLING NEW MARKERS SHALL BE INCIDENTAL TO THE ASSOCIATED CABLE ITEMS.
- 5.) 0.049 CU. YD. CONCRETE PER MARKER.
- 6.) CONTACTOR SHALL LOCATE EXISTING CABLE MARKERS IN THE FIELD BEFORE SHOULDER ADJUSTMENT BEGINS IN ORDER TO REPLACE CABLE MARKERS AT CORRECT LOCATIONS (COST INCIDENTAL TO CONTRACT).



**CONCRETE ENCASED DUCT BANKS**  
NOT TO SCALE

**NOTES:**

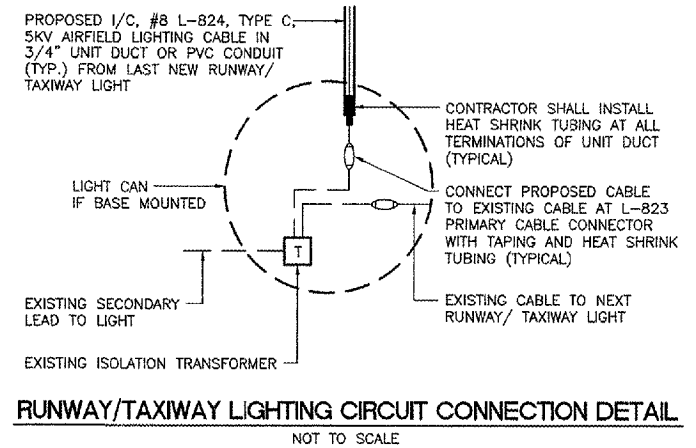
1. DIMENSIONS ARE MINIMUM.
2. CONCRETE SHALL CONFORM TO ITEM 610.
3. ALL CONDUIT SHALL BE SCHEDULE 40 PVC.
4. TOP OF CONCRETE ENCASEMENT IN TURF AREAS SHALL NOT BE LESS THAN 24" BELOW FINISHED GRADE.
5. 4" SPLIT DUCT SHALL BE CONCRETE ENCASED WITH 3" MINIMUM CONCRETE SURROUNDING 4" CONDUIT. COST INCIDENTAL TO SPLIT DUCT.
6. PROVIDE PULL STRING AND CAPS FOR UNUSED DUCTS.



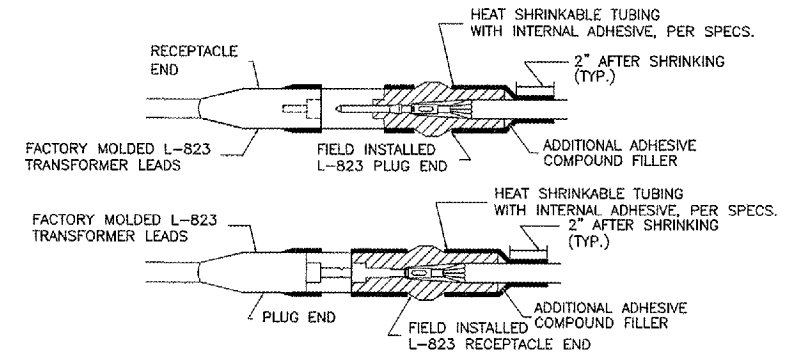
**DUCT MARKER DETAIL**  
NOT TO SCALE

DUCT MARKERS SHALL BE DRILLED AND GROUTED SO THEY ARE RECESSED FROM THE SURFACE OF THE PAVEMENTS.

NEW DUCT MARKER SHALL BE INSTALLED AT ALL DUCTS LOCATIONS PROPOSED AND EXISTING AS SHOWN ON THE CABLING AND DUCT PLAN. (COST INCIDENTAL) CONTACTOR SHALL LOCATE EXISTING DUCT LOCATIONS IN FIELD AND MARK IN FIELD BEFORE OVERLAY BEGINS IN ORDER TO REPLACE DUCT MARKERS AT CORRECT LOCATIONS. (COST INCIDENTAL TO CONTRACT)



**RUNWAY/TAXIWAY LIGHTING CIRCUIT CONNECTION DETAIL**  
NOT TO SCALE



**TYPE C AND D - CABLE SPLICE**

FOR SPLICES AT RUNWAY/TAXIWAY LIGHTS AND SIGNS  
NOT TO SCALE

**CABLE SPLICE NOTES**

1. INSIDE DIAMETER OF CONNECTOR SHALL PROPERLY MATCH THE OUTSIDE DIAMETER OF CABLE.
2. WRAP WITH AT LEAST ONE LAYER OF RUBBER OR SYNTHETIC RUBBER TAPE AND ONE LAYER OF PLASTIC TAPE, ONE-HALF LAPPED, EXTENDING AT LEAST 1-1/2 INCHES ON EACH SIDE OF JOINT.
3. THE COST OF FURNISHING AND INSTALLING ALL SPLICE MATERIALS SHALL BE INCIDENTAL TO THE ASSOCIATED CABLE ITEMS.
4. THE CONTRACTOR SHALL HAVE A MINIMUM OF TWO (2) TYPE A SPLICE KITS ON THE JOB SITE AT ALL TIMES FOR EMERGENCY REPAIRS.

**GENERAL NOTES:**

1. THE CONCRETE BASE FOR BASE MTD. LIGHTS SHALL BE TROWEL FINISHED WITH A 45° BEVELED EDGE. SLOPE TO DRAIN (610).
2. TRANSFORMER HOLDER SHALL BE ANY COMMERCIALY AVAILABLE BRICK.
3. BREAKING GROOVE COUPLINGS SHALL NOT BE OVER 1" ABOVE GROUND LINE.
4. ISOLATION TRANSFORMERS COME WITH A FACTORY INSTALLED PLUG (TYPE 1, CLASS A, STYLE 2) AND RECEPTACLE (TYPE 1, CLASS A, STYLE 9). A TYPE 1, CLASS B, STYLE 3 PLUG AND TYPE 1, CLASS B, STYLE 10 RECEPTACLE SHALL BE INSTALLED ON THE 1/C, No. 8, 5000 V., L-824 TYPE C CABLES FOR CONNECTION TO EACH TRANSFORMER.
5. TO FURTHER REDUCE THE POSSIBILITY OF WATER/MOISTURE ENTRANCE INTO THE CONNECTOR BETWEEN THE CABLE AND THE FIELD ATTACHED CONNECTOR, IT IS REQUIRED THAT A HEAT SHRINKABLE TUBING WITH INTERNAL ADHESIVE BE APPLIED OVER THE ENTIRE CABLE CONNECTOR.
6. ALL SIGNS, LIGHTS, CABLES AND TRANSFORMERS TO BE REMOVED SHALL REMAIN THE PROPERTY OF THE AIRPORT. AT THE DISCRETION OF THE AIRPORT MANAGER, THE CONTRACTOR MAY BE REQUIRED TO DISPOSE OF THESE MATERIALS OFFSITE AT NO ADDITIONAL COST.
7. TAXIWAY LIGHTS SHALL HAVE A BLUE LENS, RUNWAY LIGHTS SHALL HAVE A CLEAR OR 180° AMBER/CLEAR LENS AS DESIGNATED ON PLANS.
8. DUCT MARKERS SHALL BE INSTALLED AT EVERY NEW DUCT AND AT EVERY EXISTING DUCT USED FOR THIS PROJECT.
9. CONTRACTOR SHALL HAVE THE OPTION TO TRENCH OR PLOW UNIT DUCT. NO ADDITIONAL PAYMENT SHALL BE MADE FOR TRENCHING.

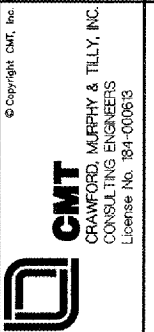
IL. CONTRACT: **LA036**  
 IL. LETTING ITEM: **2A**  
 IL. PROJECT: **IGQ-3565**  
 A.I.P. PROJECT: **3-17-0121-B25**

SURVEY BOOK # BOOK #

REVISIONS		
NUMBER	BY	DATE

0 1 2  
 THIS BAR IS EQUAL TO 2" AT FULL SCALE (34X22).

**VILLAGE OF LANSING**  
**LANSING MUNICIPAL AIRPORT**  
**LANSING, ILLINOIS**  
**REHABILITATE AIRFIELD LIGHTING SYSTEM**  
**ELECTRICAL DETAILS**  
**AIRFIELD LIGHTING DETAILS**  
**GENERAL DETAILS**



DESIGN BY: ARM  
 DRAWN BY: JRO  
 CHECKED BY: DKP  
 APPROVED BY: ---  
 DATE: 02 MARCH 2007  
 JOB No: 06297-02

**E-06**