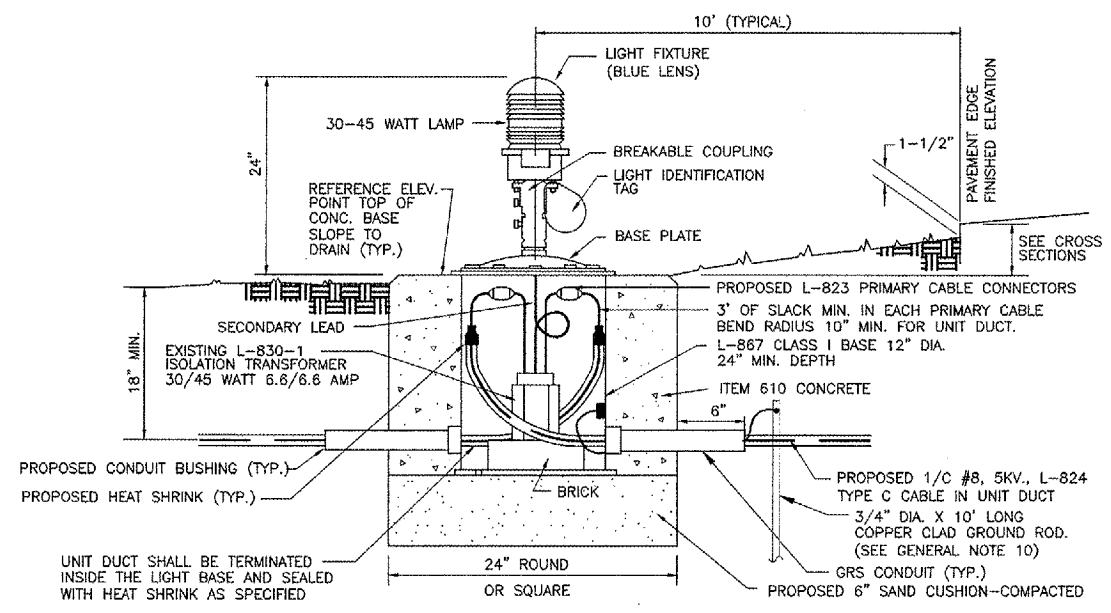
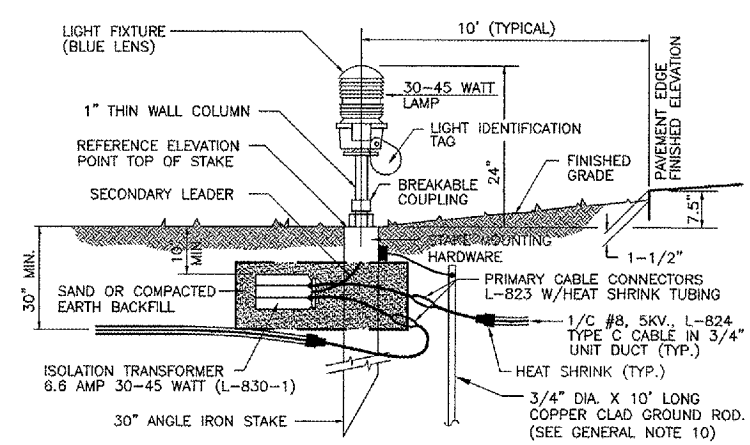


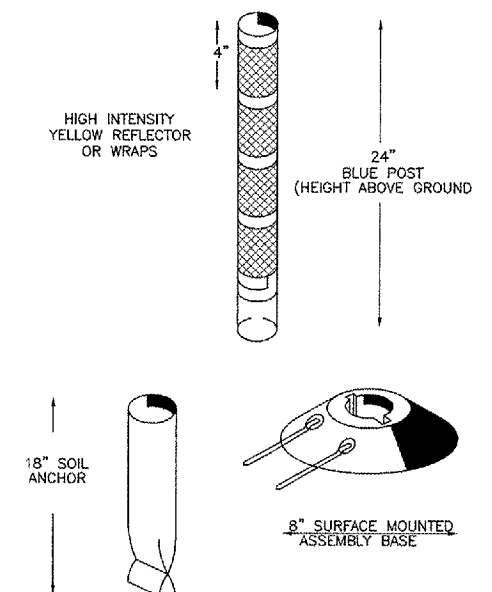
DATE: Thursday, March 08, 2007 9:01:37 PM  
 FILE: R:\laning\082972 Rehab 9-27 Elec\Draw\Sheets\18-efield-lighting.dwg  
 UPDATE BY: Jason Dove  
 LAYOUT: Layout1  
 XREF DWG: 18-efield-lighting.dwg  
 IMAGE FILES:



**PROPOSED/ADJUSTED/RELOCATED BASE MOUNTED  
MEDIUM INTENSITY TAXIWAY LIGHT**  
NOT TO SCALE



**PROPOSED/ADJUSTED/RELOCATED STAKE MOUNTED  
MEDIUM INTENSITY TAXIWAY LIGHT**  
NOT TO SCALE



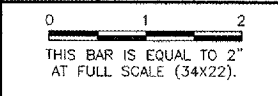
**ELEVATED RETROREFLECTIVE  
MARKER DETAIL**  
NOT TO SCALE

NOTE: RETROREFLECTIVE MARKER SHALL BE SAFE-HIT OR APPROVED EQUAL.

ILL. CONTRACT: LA036  
 ILL. LETTING ITEM: 2A  
 ILL. PROJECT: IGQ-3565  
 A.I.P. PROJECT: 3-17-0121-B25

SURVEY BOOK # BOOK #

REVISIONS		
NUMBER	BY	DATE



VILLAGE OF LANSING  
 LANSING MUNICIPAL AIRPORT  
 LANSING, ILLINOIS

REHABILITATE AIRFIELD LIGHTING SYSTEM  
 ELECTRICAL DETAILS  
 AIRFIELD LIGHTING DETAILS  
 EDGE LIGHTING AND TAXIWAY SIGN

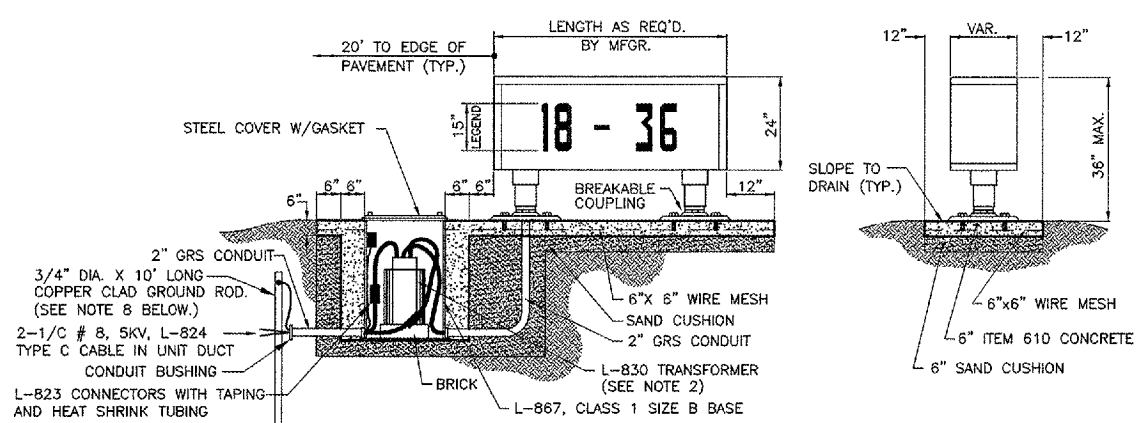
© Copyright GMT, Inc.  
**GMT**  
 CRAWFORD, MURPHY & TILLY, INC.  
 CONSULTING ENGINEERS  
 License No. 184-000613

Lansing Municipal  
**airport**

DESIGN BY:	ARM
DRAWN BY:	JRO
CHECKED BY:	DKP
APPROVED BY:	----
DATE:	02 MARCH 2007
JOB No:	06297-02

**E-07**

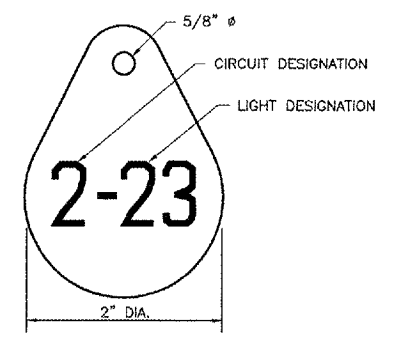
SHEET 19 OF 21 SHEETS



**HOLD LINE / TAXIWAY GUIDANCE SIGN L-858, SIZE 2, STYLE 2, CLASS 2**  
NOT TO SCALE

**SIGNAGE NOTES**

- ALL SIGNS ARE LUMACURVE 2-SIDED SIGNS BY STANDARD SIGNS OR APPROVED EQUAL.
- TRANSFORMER WATTAGE AS RECOMMENDED BY MANUFACTURER.
- LIGHTED SIGNS SHALL BE BASE MOUNTED ONLY.
- UNIT DUCT SHALL BE TERMINATED IN THE CAN AND SEALED TO THE CABLE WITH HEAT SHRINK AS SPECIFIED.
- THE NUMBER OF MODULES PER SIGN SHALL BE AS RECOMMENDED BY THE MANUFACTURER.
- CONTRACTOR SHALL SUBMIT DETAILED SHOP DRAWING INCLUDING SIGN, COLOR, SIZE AND PROPOSED LEGEND, IN ENOUGH DETAIL AND DETERMINE PROPOSED SPACING AND OTHER INFORMATION REQUIRED BY SPECIAL PROVISIONS. CONTRACTOR TO VERIFY PROPOSED SIGN LOCATIONS AND ORIENTATIONS WITH RESIDENT ENGINEER PRIOR TO INSTALLATION.
- WHEN EXISTING SIGNS ARE PROPOSED TO BE RETROFITTED WITH NEW SIGN PANELS, THE SIGN PANELS SHALL CONFORM TO THE APPLICABLE REQUIREMENTS OF ADVISORY CIRCULAR 150/5340-18 (LATEST EDITION). THE CONTRACTOR SHALL VERIFY THAT THE PROPOSED SIGN PANELS ARE COMPATIBLE WITH THE EXISTING SIGN ASSEMBLIES WHICH ARE LUMACURVE BY STANDARD SIGNS.
- INSTALL 1/C #6 AWG BARE COPPER GROUND JUMPER CONNECTED TO GROUND LUG INSIDE BASE CAN AND EXOTHERMICALLY WELDED TO GROUND ROD. INSTALL GROUND LUG FOR EXISTING CANS, IF REQUIRED.



**LIGHT IDENTIFICATION DETAIL**  
NOT TO SCALE

**NOTES:**

- INSTALL A NONCORROSIVE DISC OF 2" MINIMUM DIAMETER WITH THE NUMBER PERMANENTLY STAMPED, CUT OUT, OR ENGRAVED UNDER THE HEAD OF THE BASE PLATE BOLT OR ATTACHED TO LIGHT FLANGE WITH A SET SCREW.
- NUMERALS SHOWN ARE FOR ILLUSTRATIVE PURPOSES ONLY. ALL EXISTING AND PROPOSED TAXIWAY AND RUNWAY LIGHTS SHALL BE TAGGED AS DIRECTED BY THE RESIDENT ENGINEER. ALL LIGHTS ON EXISTING CIRCUITS THAT HAVE LIGHTING IMPROVEMENTS (PROPOSED OR RELOCATED LIGHTS) SHALL BE RETAGGED.
- COST OF TAGGING LIGHTS SHALL NOT BE PAID FOR SEPARATELY BUT SHALL BE CONSIDERED INCIDENTAL TO THE CONTRACT.

**GENERAL NOTES:**

- THE CONCRETE BASE FOR BASE MOUNTED LIGHTS SHALL BE TROWEL FINISHED WITH A 45° BEVELED EDGE. SLOPE TO DRAIN (610).
- TRANSFORMER HOLDER SHALL BE ANY COMMERCIALY AVAILABLE BRICK.
- BREAKING GROOVE COUPLINGS SHALL NOT BE OVER 1" ABOVE GROUND LINE.
- ISOLATION TRANSFORMERS COME WITH A FACTORY INSTALLED PLUG (TYPE 1, CLASS A, STYLE 2) AND RECEPTACLE (TYPE 1, CLASS A, STYLE 9). A TYPE 1, CLASS B, STYLE 3 PLUG AND TYPE 1, CLASS B, STYLE 10 RECEPTACLE SHALL BE INSTALLED ON THE 1/C, No. 8, 5000 V., L-824 TYPE C CABLES FOR CONNECTION TO EACH TRANSFORMER.
- TO FURTHER REDUCE THE POSSIBILITY OF WATER/MOISTURE ENTRANCE INTO THE CONNECTOR BETWEEN THE CABLE AND THE FIELD ATTACHED CONNECTOR, IT IS REQUIRED THAT A HEAT SHRINKABLE TUBING WITH INTERNAL ADHESIVE BE APPLIED OVER THE ENTIRE CABLE CONNECTOR.
- ALL SIGNS, LIGHTS, CABLES AND TRANSFORMERS TO BE REMOVED SHALL REMAIN THE PROPERTY OF THE AIRPORT. AT THE DISCRETION OF THE AIRPORT MANAGER, THE CONTRACTOR MAY BE REQUIRED TO DISPOSE OF THESE MATERIALS OFFSITE AT NO ADDITIONAL COST.
- TAXIWAY LIGHTS SHALL HAVE A BLUE LENS, RUNWAY LIGHTS SHALL HAVE A CLEAR OR 180° AMBER/CLEAR LENS AS DESIGNATED ON PLANS.
- DUCT MARKERS SHALL BE INSTALLED AT EVERY NEW DUCT AND AT EVERY EXISTING DUCT USED FOR THIS PROJECT.
- CONTRACTOR SHALL HAVE THE OPTION TO TRENCH OR PLOW UNIT DUCT. NO ADDITIONAL PAYMENT SHALL BE MADE FOR TRENCHING.
- INSTALL 1/C #6 AWG BARE COPPER GROUND JUMPER CONNECTED TO GROUND LUG INSIDE BASE CAN OR STAKE AND EXOTHERMICALLY WELDED TO GROUND ROD. INSTALL GROUND LUG FOR EXISTING CANS AND STAKES, IF REQUIRED. INSTALLING GROUND LUGS FOR EXISTING CANS AND STAKES SHALL BE AT NO ADDITIONAL COST.