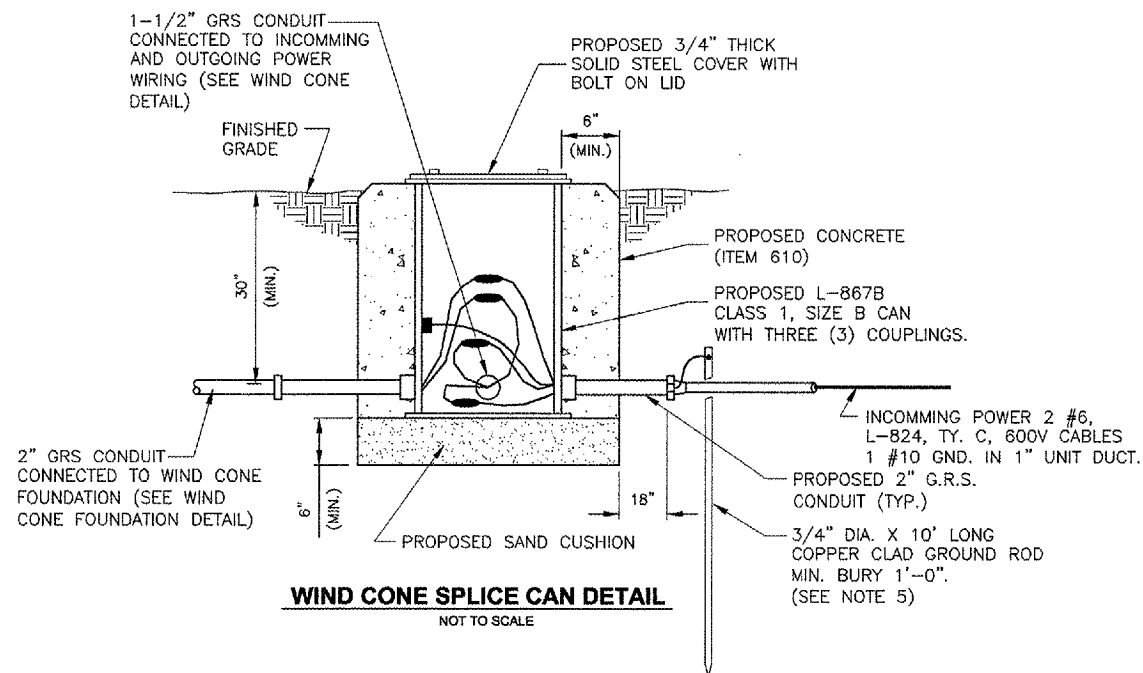
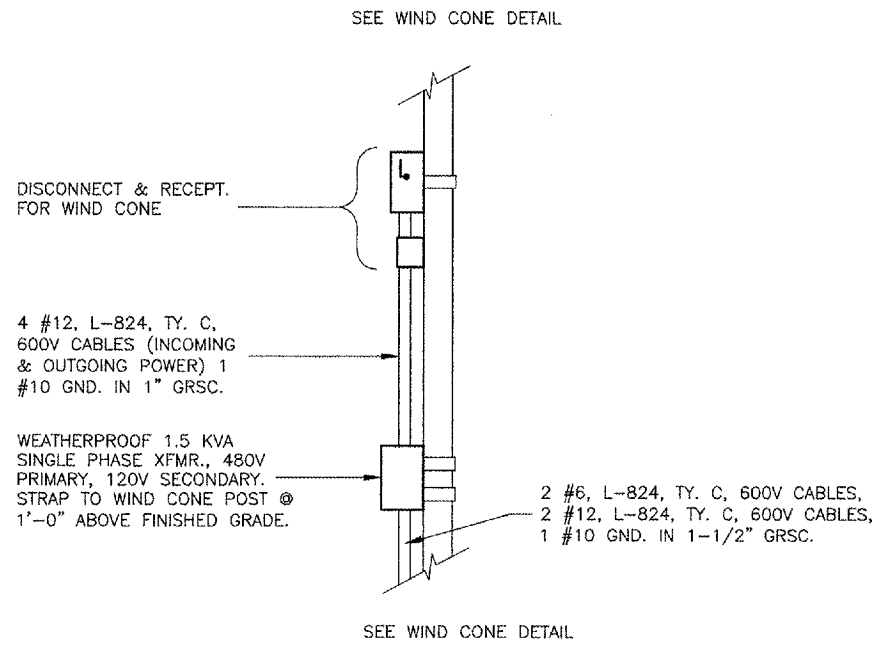


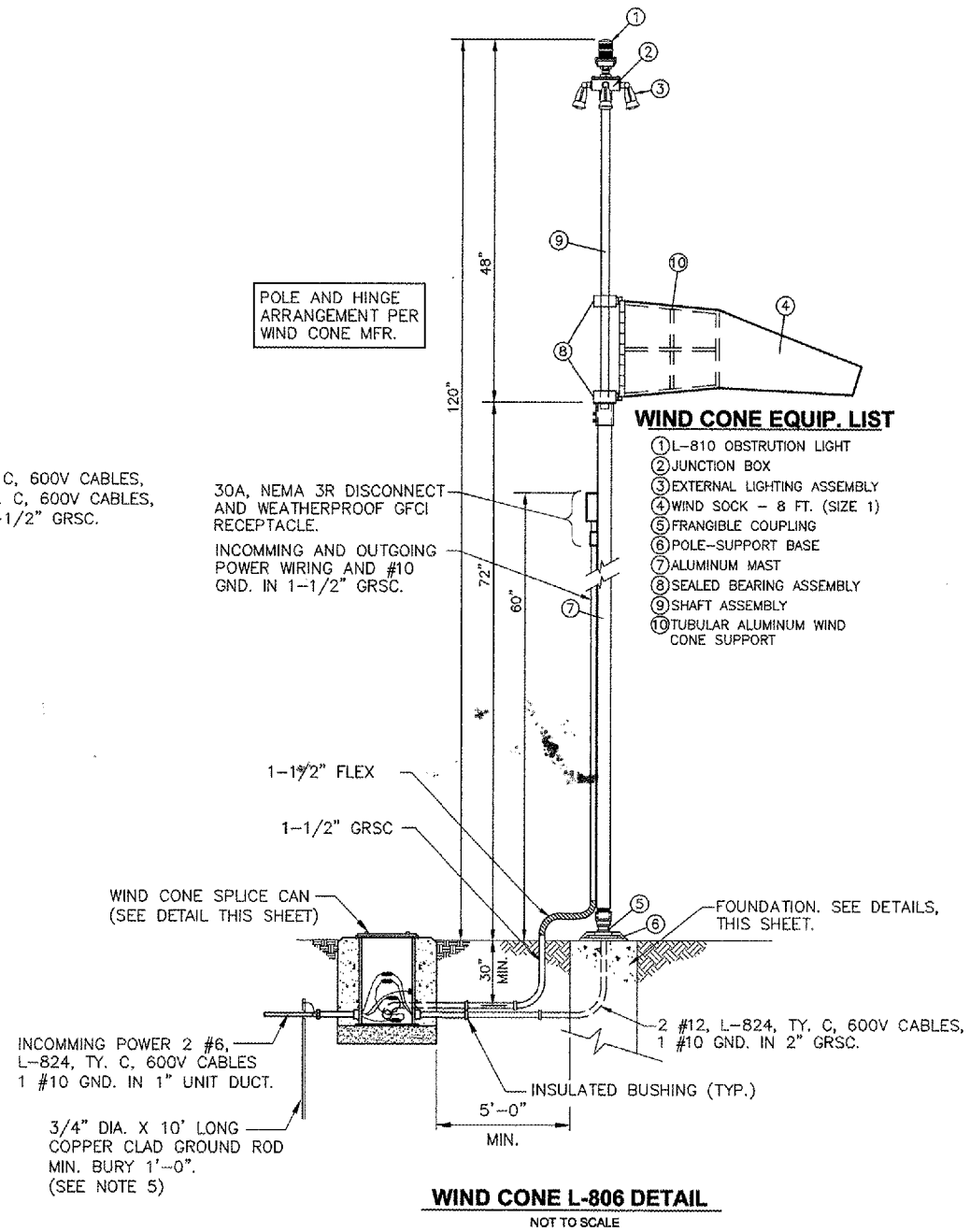
WIND CONE FOUNDATION
 NOT TO SCALE



WIND CONE SPLICE CAN DETAIL
 NOT TO SCALE



NEMA 3R DISCONNECT AND WEATHERPROOF GFCI RECEPTACLE DETAIL
 NOT TO SCALE



WIND CONE L-806 DETAIL
 NOT TO SCALE

GENERAL NOTES:

1. THE CONCRETE BASE FOR THE SPLICE CAN AND WIND CONE FOUNDATION SHALL BE TROWEL FINISHED WITH A 45° BEVELED EDGE. SLOPE TO DRAIN (610).
2. ALL MATERIAL, EQUIPMENT AND LABOR ARE INCIDENTAL TO WIND CONE INSTALLATION.
3. TO FURTHER REDUCE THE POSSIBILITY OF WATER/MOISTURE ENTRANCE INTO THE CONNECTOR BETWEEN THE CABLE AND THE FIELD ATTACHED CONNECTOR, IT IS REQUIRED THAT A HEAT SHRINKABLE TUBING WITH INTERNAL ADHESIVE BE APPLIED OVER THE ENTIRE CABLE CONNECTOR.
4. THE WIND SOCK SHALL BE DAY-GLO BLAZE ORANGE NYLON FABRIC WIND CONE 8'-0" LONG OR SIMILAR.
5. INSTALL 1/C #6 AWG BARE COPPER GROUND JUMPER CONNECTED TO POLE BASE AND THE GROUND LUG INSIDE THE SPLICE CAN AND EXOTHERMICALLY WELDED TO GROUND ROD.

IL. CONTRACT: LA036
 IL. LETTING ITEM: 2A
 IL. PROJECT: IGQ-3565
 A.I.P. PROJECT: 3-17-0121-B25

SURVEY BOOK # BOOK #

REVISIONS		
NUMBER	BY	DATE

0 1 2
 THIS BAR IS EQUAL TO 2" AT FULL SCALE (34X22).

VILLAGE OF LANSING
 LANSING MUNICIPAL AIRPORT
 LANSING, ILLINOIS

REHABILITATE AIRFIELD LIGHTING SYSTEM
 ELECTRICAL DETAILS
 AIRFIELD LIGHTING DETAILS
 L-806 WIND CONE LIGHTED

© Copyright G.M.T., Inc.

G.M.T.
 CRAWFORD, MURPHY & TILLY, INC.
 CONSULTING ENGINEERS
 License No. 184-000615



DESIGN BY: AB
 DRAWN BY: JWD
 CHECKED BY: AB
 APPROVED BY: -----
 DATE: 02 MARCH 2007
 JOB No: 06297-02

E-09