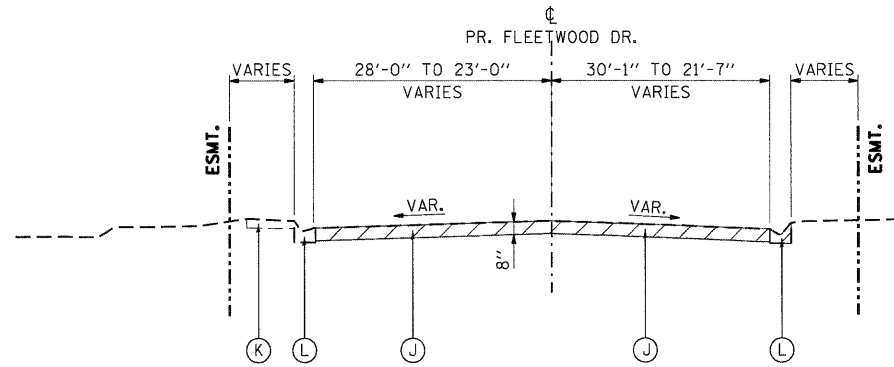


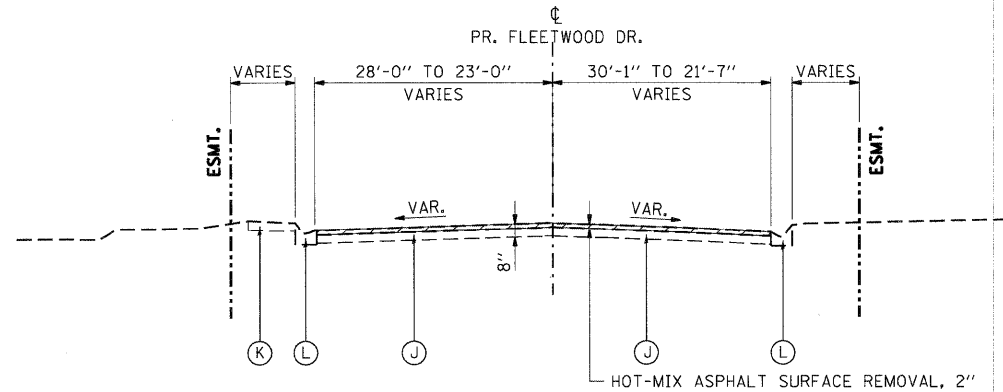
EXISTING TYPICAL SECTION
FLEETWOOD DR.

STA. 310+50.00 TO STA. 311+77.68



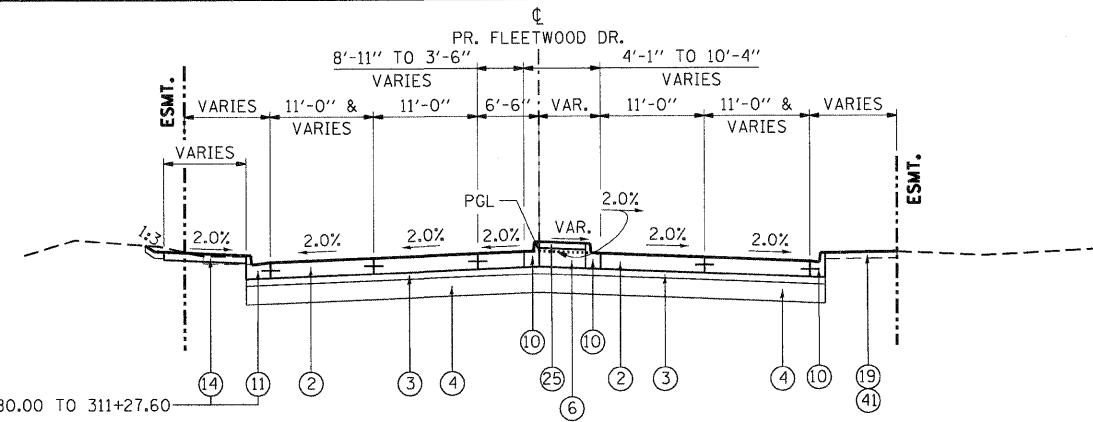
EXISTING TYPICAL SECTION
FLEETWOOD DR.

STA. 311+77.68 TO STA. 312+44.84



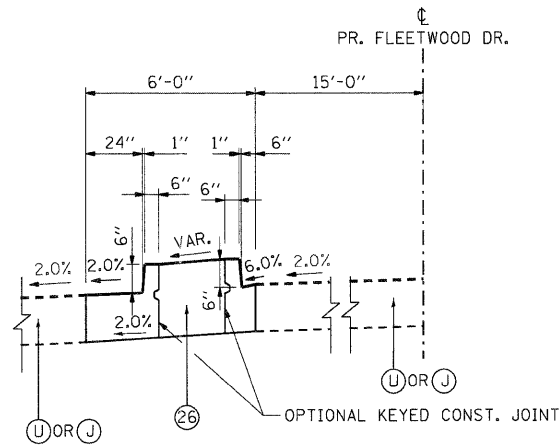
EXISTING TYPICAL SECTION
FLEETWOOD DR.

STA. 312+44.84 TO STA. 312+64.84



PROPOSED TYPICAL SECTION
FLEETWOOD DR.

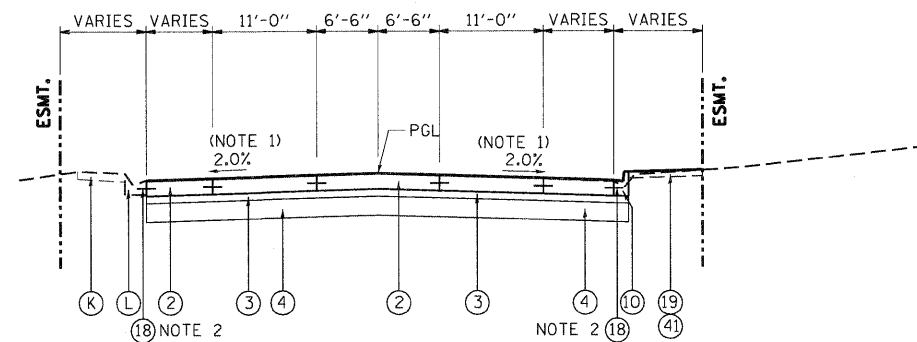
STA. 310+88.40 TO STA. 311+76.74



PROPOSED TYPICAL SECTION

CONCRETE MEDIAN, TYPE SB (SPECIAL)

STA. 307+31.89 TO STA. 309+38.00

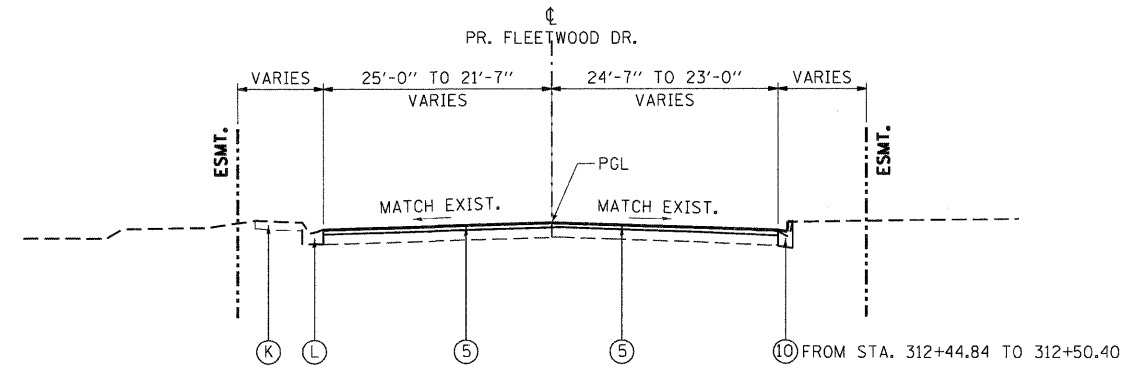


PROPOSED TYPICAL SECTION
FLEETWOOD DR.

STA. 311+76.74 TO STA. 312+44.84

NOTE 1: CROSS SLOPE TRANSITION (-2.00% TO -1.50%) FROM STA. 312+32.00 TO STA. 312+44.84

NOTE 2: SPACE AT 24" CENTER-TO-CENTER



PROPOSED TYPICAL SECTION
FLEETWOOD DR.

STA. 312+44.84 TO STA. 312+64.84

NOTE: SEE PAVEMENT JOINTING PLANS FOR PAVEMENT JOINTS.

EXISTING LEGEND

- A PCC PAVEMENT (10" AND VARIES)
- B HMA SURFACE (3" AND VARIES)
- C HMA SHOULDER (8" AND VARIES)
- D HMA SHOULDER (6" AND VARIES)
- E FENCE
- F CONCRETE MEDIAN BARRIER & BASE
- G PCC SHOULDER (10" AND VARIES)
- H TOPSOIL REMOVAL (X")
- I HMA BASE COURSE
- J HMA PAVEMENT
- K PCC SIDE WALK
- L CURB AND GUTTER
- M CONCRETE MEDIAN
- N STEEL PLATE BEAM GUARDRAIL
- O TEMP PAVEMENT (SEE NOTE 3)
- P TEMPORARY CONCRETE BARRIER
- Q RETAINING WALL (CAST-IN-PLACE)
- R TEMP. SOIL RETENTION SYSTEM
- S SUBBASE GRANULAR MATERIAL, TYPE C (10")
- U PCC PAVEMENT
- V PCC PAVEMENT (11" AND VARIES)
- W HMA SURFACE (4" AND VARIES)
- X HMA SURFACE (5" AND VARIES)
- Y HMA SURFACE (6" AND VARIES)
- Z CONC CURB TB
- AA REMOVAL AND DISPOSAL OF UNSUITABLE MATERIAL

PROPOSED LEGEND

- 1 CONTINUOUSLY REINFORCED CONCRETE PAVEMENT 10 3/4"
- 2 PCC PVT 10 JOINTED
- 3 STABILIZED SUBBASE (HMA) 4 1/2"
- 4 AGGREGATE SUBGRADE 12"
- 5 HOT-MIX ASPHALT SURFACE COURSE, MIX "D", N70, 2"
- 6 SUB-BASE GRANULAR MATERIAL, TYPE B 12"
- 7 CONCRETE BARRIER, DOUBLE FACE, 32" HEIGHT
- 8 CONCRETE BARRIER BASE
- 9 AGG WEDGE SHLD TYPE B
- 10 COMB CC&G TB6.12
- 11 COMB CC&G TB6.24
- 12 COMB CC&G TM4.24
- 13 CONC CURB TB SPL
- 14 PC CONC SIDEWALK 5
- 15 SPBGR TY A 6FT POSTS
- 16 EMBANKMENT
- 17 RETAINING WALL (SEE STRUCTURAL PLANS)
- 18 DRILL AND GROUT #6 TIE BARS
- 19 TOPSOIL FURNISH AND PLACE, 6"
- 20 TOPSOIL FURNISH AND PLACE, 10"

- 21 HOT-MIX ASPHALT SURFACE COURSE, MIX "D", N70, 1 3/4"
- 22 HOT-MIX ASPHALT BASE COURSE, 8"
- 23 SHOULDER RUMBLE STRIPS, 16"
- 24 AGGREGATE SURFACE COURSE, TYPE B, 4"
- 25 CONCRETE MEDIAN SURFACE, 4 INCH
- 26 CONCRETE MEDIAN, TYPE SB (SPECIAL)
- 27 POLY. HMA SURFACE COURSE, MIX "F", N90 1 3/4"
- 28 CHAIN LINK FENCE, 4'
- 29 POLY. LEVELING BINDER (MM), IL-4.75, N50 3/4" (MIN)
- 30 HOT-MIX ASPHALT SURFACE COURSE, MIX "D", N70, 3"
- 31 POLY. HMA SURFACE COURSE, MIX "F", N90 2"
- 32 COMB CC&G TB6.06
- 33 AGGREGATE SHOULDERS, TYPE B 4"
- 34 SEEDING (SEE LANDSCAPING PLANS)
- 35 PCC SHOULDERS 10 3/4"
- 36 PCC SHOULDERS 10"
- 37 AGGREGATE SHOULDERS, TYPE B 10"
- 38 CONCRETE BARRIER, SINGLE FACE 42" HEIGHT (SPECIAL)
- 39 CORRUGATED MEDIAN
- 40 HOT-MIX ASPHALT BASE COURSE, 7"
- 41 SODDING, SALT TOLERANT

STATE OF ILLINOIS
DEPARTMENT OF TRANSPORTATION
FAP ROUTE 345 / US ROUTE 20

EXISTING AND PROPOSED TYPICAL SECTIONS
FLEETWOOD DRIVE

F.A.P. RTE.	SECTION	COUNTY	TOTAL SHEETS	SHEET NO.
345	8R-R	KANE	794	36
CONTRACT NO. 60H45				

SCALE: SHEET NO. OF STA. 310+50.00 TO STA. 312+64.84

FED. ROAD DIST. NO. [ILLINOIS] FED. AID PROJECT

.\\D:\6045-XSCT.LDDN...\\D:\6045-BRDRE.LDDN...\\D:\6045-LEGEND.LDDN...\\D:\6045-PLAN...\\D:\6045-SECTION...\\D:\6045-TYPICAL.FBI.LDDN
 12-12-2011 12:46:38
 TENG & ASSOCIATES, INC.
 ENGINEERS/ARCHITECTS/PLANNERS
 CHICAGO, ILLINOIS