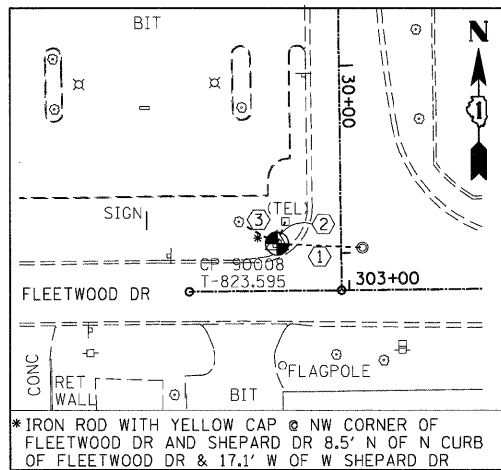


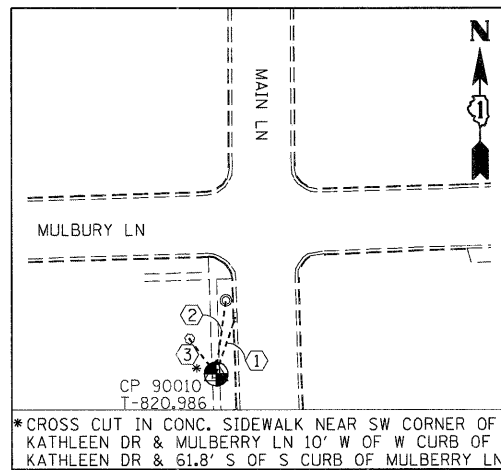
*IRON ROD WITH YELLOW CAP, 13 S. OF S. CURB OF BERKLEY ST. AND 695' W. OF W. CURB OF SHEPARD DR.

- (N 1950816.625, E 988336.015, ELEV. 826.040)
- ① 13.05' TO THE BACK OF CURB
 - ② 66.30' TO THE CENTER OF FIRE HYDRANT
 - ③ 52.20' TO THE CENTER OF WATER VALVE VAULT (MH)



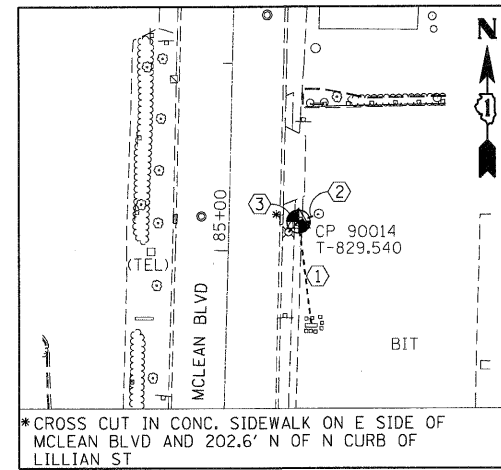
*IRON ROD WITH YELLOW CAP @ NW CORNER OF FLEETWOOD DR AND SHEPARD DR 8.5' N OF N CURB OF FLEETWOOD DR & 17.1' W OF W SHEPARD DR

- (N 1950212.996, E 989020.547, ELEV. 823.480)
- ① 45.30' TO THE CENTER OF WATER VALVE VAULT (MH)
 - ② 12.40' TO THE CENTER OF TELEPHONE CABLE BOX
 - ③ 20.50' TO THE PK NAIL SET ON SOUTH FACE OF 12" TREE



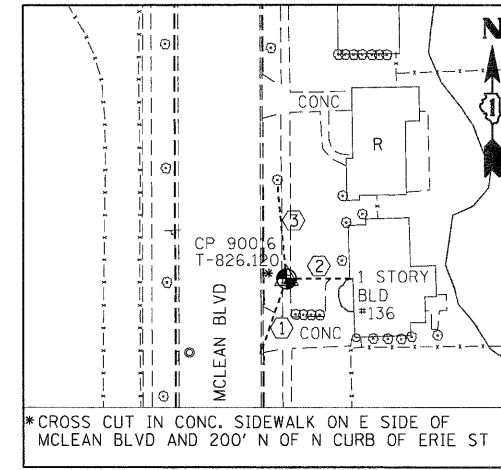
*CROSS CUT IN CONC. SIDEWALK NEAR SW CORNER OF KATHLEEN DR & MULBERRY LN 10' W OF W CURB OF KATHLEEN DR & 61.8' S OF S CURB OF MULBERRY LN

- (N 1952288.720, E 988592.527, ELEV. 820.880)
- ① 31.90' TO THE CENTER OF GUTTER INLET
 - ② 39.50' TO THE CENTER OF CATCH BASIN (MH)
 - ③ 23.40' TO THE PK NAIL SET IN EAST FACE OF 6" TREE



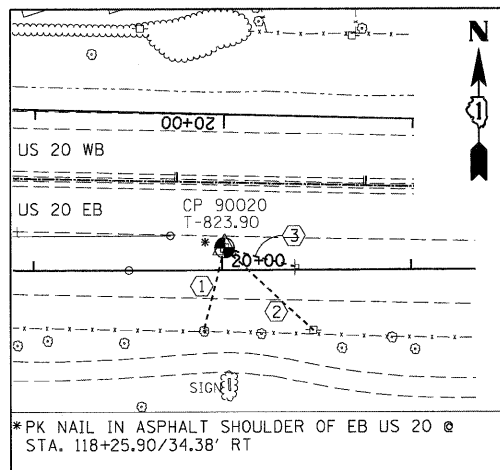
*CROSS CUT IN CONC. SIDEWALK ON E SIDE OF MCLEAN BLVD AND 202.6' N OF N CURB OF LILLIAN ST

- (N 1952198.206, E 990110.538, ELEV. 829.370)
- ① 54.45' TO THE NW CORNER OF PIETROS PIZZA'S SIGN
 - ② 11.60' TO THE CENTER OF CATCH BASIN
 - ③ 7.80' TO THE CENTER OF LIGHT POLE



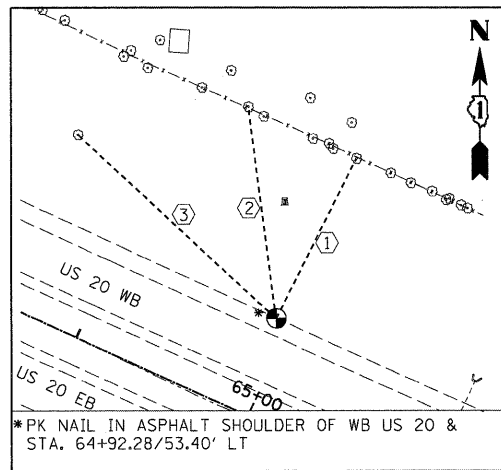
*CROSS CUT IN CONC. SIDEWALK ON E SIDE OF MCLEAN BLVD AND 200' N OF N CURB OF ERIE ST

- (N 1953522.787, E 990122.104, ELEV. 825.980)
- ① 39.10' TO THE CENTER OF GUTTER INLET
 - ② 33.85' TO THE CORNER OF THE 1 STORY FRAME BLD #169
 - ③ 51.60' TO THE PK NAIL SET IN SOUTH FACE OF 26" TREE



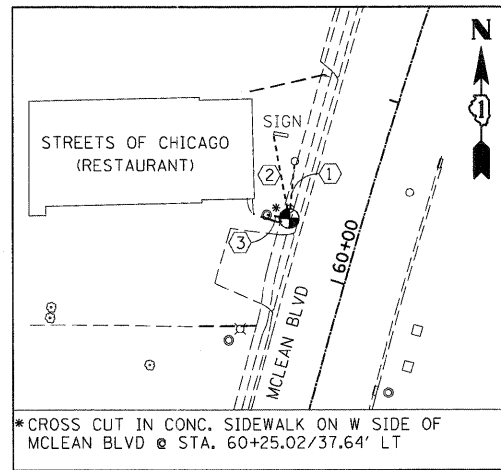
*PK NAIL IN ASPHALT SHOULDER OF EB US 20 @ STA. 118+25.90/34.38' RT

- (N 1950792.807, E 991980.556, ELEV. 823.810)
- ① 45.00' TO THE PK NAIL SET IN NORTH FACE OF 16" TREE
 - ② 64.10' TO THE PK NAIL SET IN NORTH FACE OF POWER POLE
 - ③ 38.70' TO THE CENTER OF SNTG (EMERGENCY PARKING ONLY)



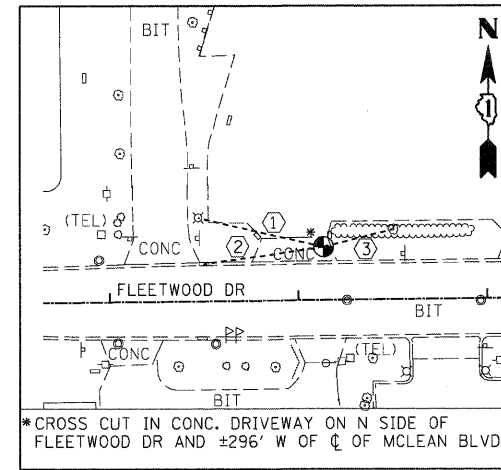
*PK NAIL IN ASPHALT SHOULDER OF WB US 20 @ STA. 64+92.28/53.40' LT

- (N 1952521.485, E 986984.329, ELEV. 823.490)
- ① 94.20' TO THE PK NAIL SET IN SOUTH FACE OF 10" TREE
 - ② 110.85' TO THE PK NAIL SET IN SOUTH FACE OF 12" TREE
 - ③ 142.50' TO THE PK NAIL SET IN EAST FACE OF 12" TREE



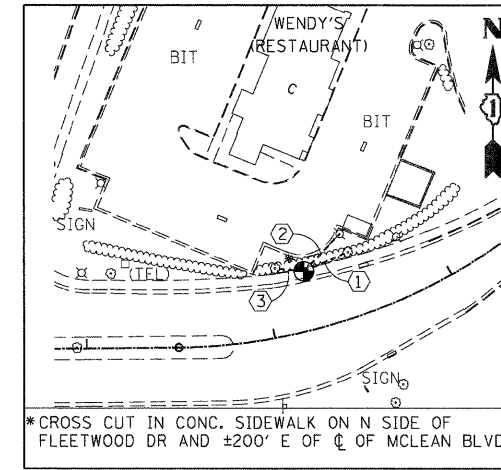
*CROSS CUT IN CONC. SIDEWALK ON W SIDE OF MCLEAN BLVD @ STA. 60+25.02/37.64' LT

- (N 1949781.472, E 989579.743, ELEV. 826.940)
- ① 30.40' TO THE CENTER OF WATER BUFFALO BOX
 - ② 44.35' TO THE SW CORNER OF RESTAURANT'S SIGN
 - ③ 12.00' TO THE CENTER OF SANITARY MANHOLE



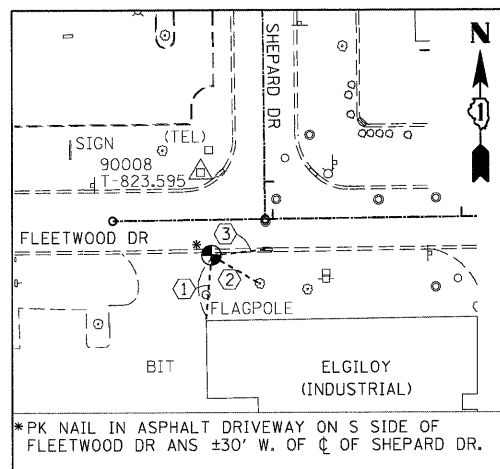
*CROSS CUT IN CONC. DRIVEWAY ON N SIDE OF FLEETWOOD DR AND ±296' W OF CL OF MCLEAN BLVD

- (N 1950220.667, E 989471.903, ELEV. 825.320)
- ① 68.20' TO THE CENTER OF LIGHT POLE
 - ② 64.20' TO THE CENTER OF GUTTER INLET
 - ③ 37.50' TO THE PK NAIL SET IN SOUTH FACE OF 16" TREE



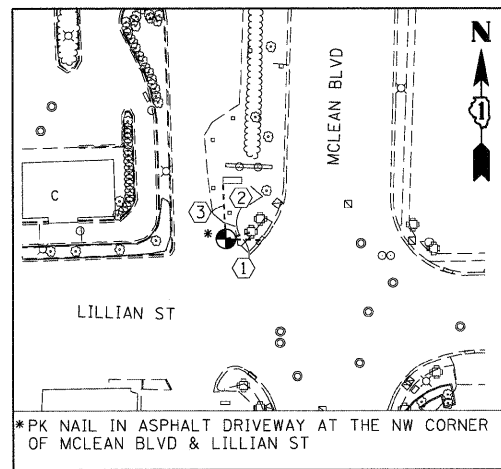
*CROSS CUT IN CONC. SIDEWALK ON N SIDE OF FLEETWOOD DR AND ±200' E OF CL OF MCLEAN BLVD

- (N 1950237.454, E 989973.590, ELEV. 824.710)
- ① 25.30' TO THE PK NAIL SET IN SOUTH FACE OF 12" TREE
 - ② 27.45' TO THE CENTER OF LIGHT POLE
 - ③ 15.35' TO THE PK NAIL SET IN SOUTH FACE OF 14" TREE



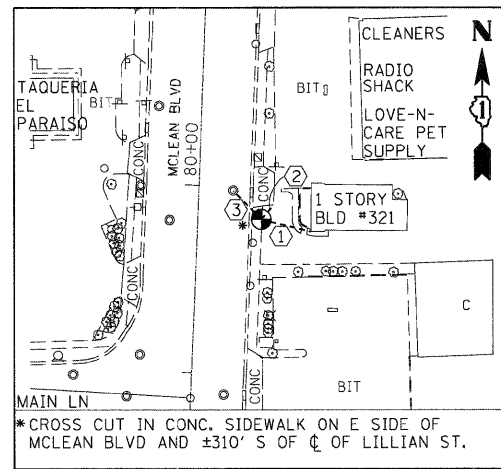
*PK NAIL IN ASPHALT DRIVEWAY ON S SIDE OF FLEETWOOD DR AND ±30' W. OF CL OF SHEPARD DR.

- (N 1950169.350, E 989026.104, ELEV. 823.170)
- ① 34.70' TO THE NW CORNER OF 1 STORY BRICK BLD
 - ② 29.40' TO THE PK NAIL SET IN NORTH FACE OF 18" TREE
 - ③ 30.00' TO THE CENTER OF GUTTER INLET



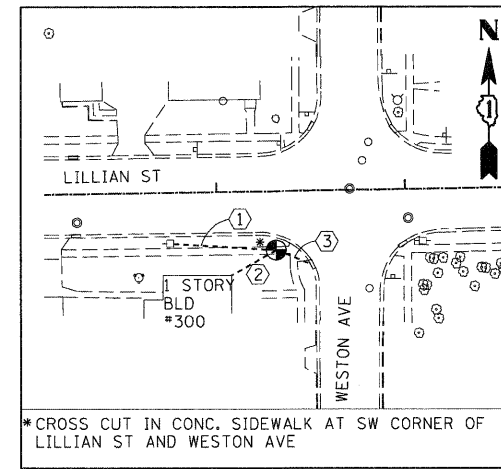
*PK NAIL IN ASPHALT DRIVEWAY AT THE NW CORNER OF MCLEAN BLVD & LILLIAN ST

- (N 1952013.765, E 990009.054, ELEV. 829.860)
- ① 18.60' TO THE CENTER OF GUTTER INLET
 - ② 13.55' TO THE CENTER OF TRAFFIC SIGNAL POLE
 - ③ 29.25' TO THE SW CORNER OF ELGIN MALL'S SIGN



*CROSS CUT IN CONC. SIDEWALK ON E SIDE OF MCLEAN BLVD AND ±310' S OF CL OF LILLIAN ST.

- (N 1951665.021, E 990089.560, ELEV. 831.840)
- ① 28.30' TO THE SW CORNER OF 1 STORY FRAME BLD #321
 - ② 10.10' TO THE SE CORNER OF CONC. DRIVEWAY
 - ③ 21.00' TO THE CENTER OF SANITARY MANHOLE



*CROSS CUT IN CONC. SIDEWALK AT SW CORNER OF LILLIAN ST AND WESTON AVE

- (N 1951948.255, E 990397.884, ELEV. 831.060)
- ① 56.05' TO THE PK NAIL SET IN EAST FACE OF POWER POLE
 - ② 27.25' TO THE NE CORNER OF 1 STORY FRAME BLD #300
 - ③ 20.40' TO THE CENTER OF GUTTER INLET

.\\D:\B45-BORDER\1\CONV...\\D:\MASTER-TOPOE.DGN
 12-12-2011, 12:41:43
 .\\S:\B45\BORDER\1\CONV...\\S:\B45\BORDER\1\CONV...SHEET\06B45-SHT-ALDMMN183.DGN
 BAJZEKKJ

FILE NAME =	USER NAME = #USER#	DESIGNED - MRK	REVISED -
#FILE#		DRAWN - JFS	REVISED -
	PLOT SCALE = #SCALE#	CHECKED - DDH	REVISED -
	PLOT DATE = #DATE#	DATE - 12/16/11	REVISED -

STATE OF ILLINOIS
DEPARTMENT OF TRANSPORTATION
 FAP ROUTE 345 / US ROUTE 20

ALIGNMENT, TIES AND BENCHMARKS
III

SCALE: 1"=200' SHEET NO. OF STA. TO STA.

F.A.P. RTE.	SECTION	COUNTY	TOTAL SHEETS	SHEET NO.
345	8R-R	KANE	794	58
CONTRACT NO. 60H45				
FED. ROAD DIST. NO. [ILLINOIS] FED. AID PROJECT				