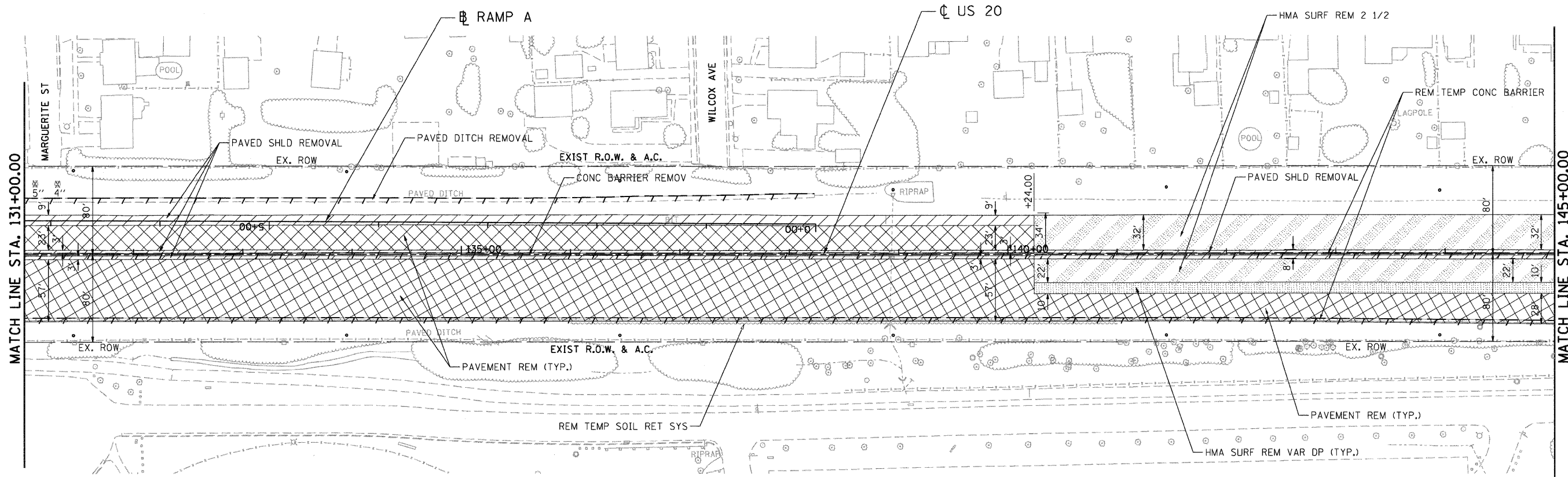


\D:\6045-BORDER\1.DGN, \D:\6045-LEGEND.DGN, \D:\6045-REMOVAL.DGN, \D:\6045-DESIGN.DGN, \D:\6045-TOPOE.DGN, \D:\6045-TOPOE.DGN, \D:\6045-SHT-PL-IN\007.DGN
 12-15-2011, 11:34:04
 BAJZEKJ

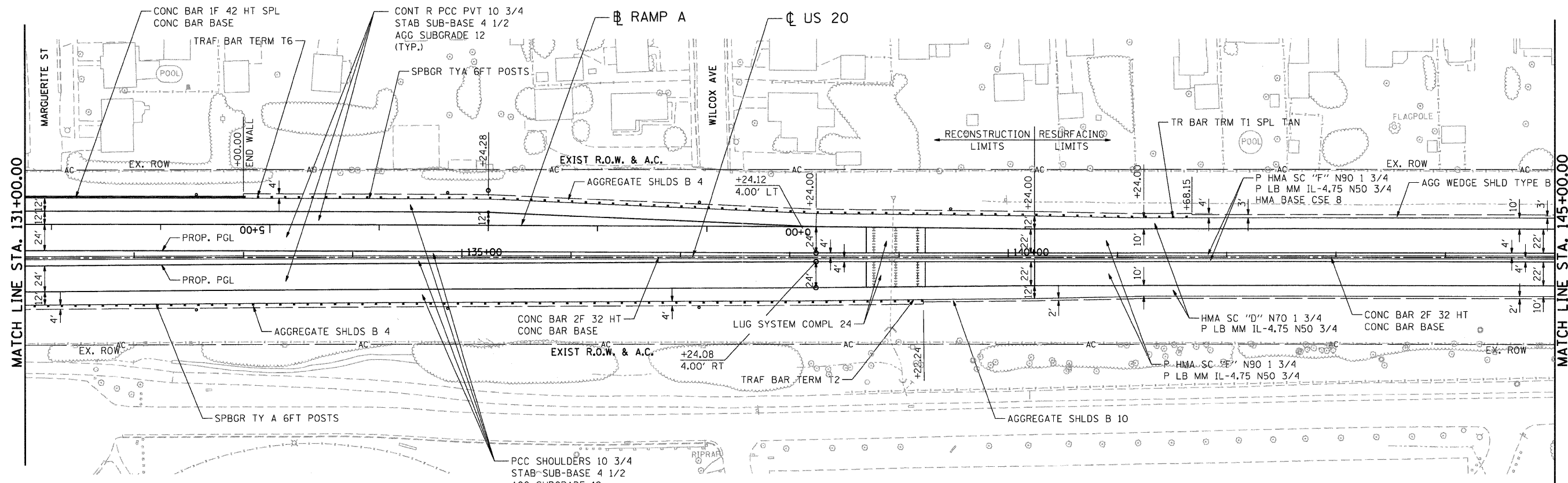


LEGEND

- TEMPORARY LIGHT POLE (SEE LIGHTING PLANS)

EXISTING PLAN

NOTE: SEE DRAINAGE AND UTILITY PLANS FOR REMOVAL OF DRAINAGE RELATED ITEMS.



LEGEND

- PROPOSED LIGHT POLE (SEE LIGHTING PLANS)
- PROPOSED TRAFFIC SIGNAL POLE (SEE TRAFFIC SIGNAL PLANS)

PROPOSED PLAN

FILE NAME = #FILE# TENG TENG & ASSOCIATES, INC. ENGINEERS/ARCHITECTS/PLANNERS CHICAGO, ILLINOIS	USER NAME = #USER#	DESIGNED - MRK DRAWN - MRK CHECKED - DDH DATE - 12/16/11	REVISED - REVISED - REVISED - REVISED -	STATE OF ILLINOIS DEPARTMENT OF TRANSPORTATION FAP ROUTE 345 / US ROUTE 20	ROADWAY PLAN U.S. ROUTE 20	F.A.P. RTE. 345	SECTION 8R-R	COUNTY KANE	TOTAL SHEETS 794	SHEET NO. 66
	SCALE: 1"=50' SHEET NO. OF SHEETS STA. 131+00.00 TO STA. 145+00.00						CONTRACT NO. 60H45 FED. ROAD DIST. NO. ILLINOIS FED. AID PROJECT			