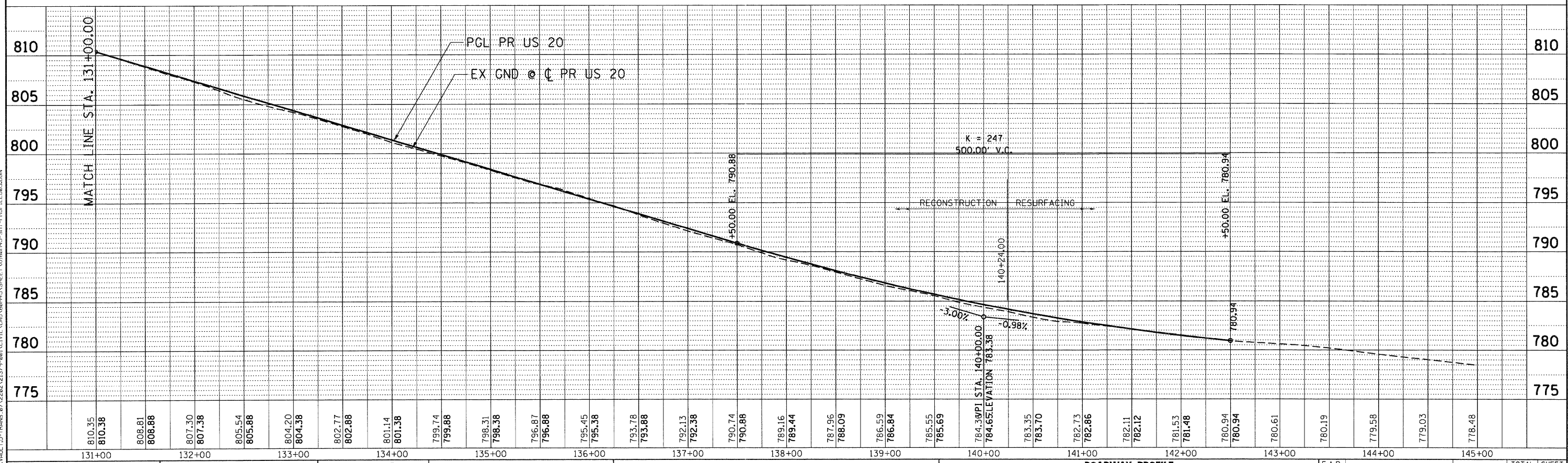
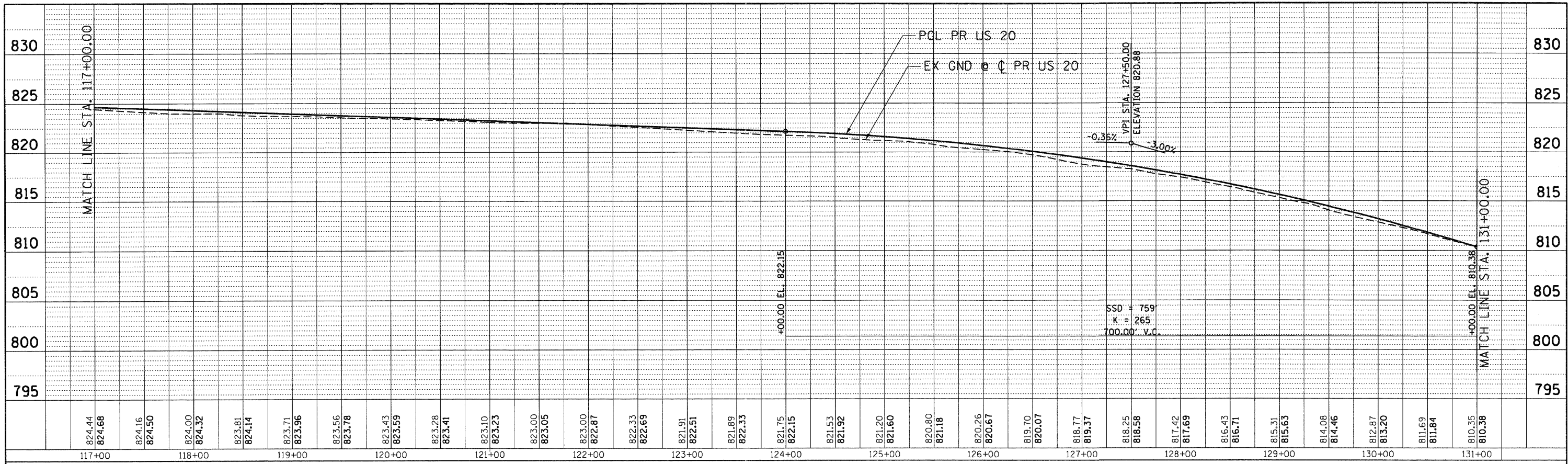


PLAN	SURVEYED	BY	DATE
	PLOTTED		
	CHECKED		
	NO. OF WAY CHECKED		
	CADD FILE NAME		
	NO.		

PROFILE	SURVEYED	BY	DATE
	PLOTTED		
	CHECKED		
	NO. OF WAY CHECKED		
	CADD FILE NAME		
	NO.		

12-12-2011 12:42:00 BAJZKJ
 \\FS-8044\LAN\VALT.D\FRMS.B7\2202\2379-00\VIC181\LOAD\68445A\SHEET\162845-SHT-PROFILE.DWG



FILE NAME =	USER NAME = #USER#	DESIGNED - MRK	REVISED -	STATE OF ILLINOIS DEPARTMENT OF TRANSPORTATION FAP ROUTE 345 / US ROUTE 20		ROADWAY PROFILE U.S. ROUTE 20		F.A.P. RTE. 345	SECTION 8R-R	COUNTY KANE	TOTAL SHEETS 794	SHEET NO. 70
#FILEL#	PLLOT SCALE = #SCALE#	DRAWN - MRK	REVISED -			SCALE: HORIZ. 1"=50'	VERT. 1"=5'	STA. 117+00.00 TO STA. 145+00.00	FED. ROAD DIST. NO.	ILLINOIS FED. AID PROJECT	CONTRACT NO. 60H45	
TENG		TENG & ASSOCIATES, INC. ENGINEERS/ARCHITECTS/PLANNERS CHICAGO, ILLINOIS		CHECKED - DDH	REVISED -							
		DATE - 12/16/11	REVISED -									