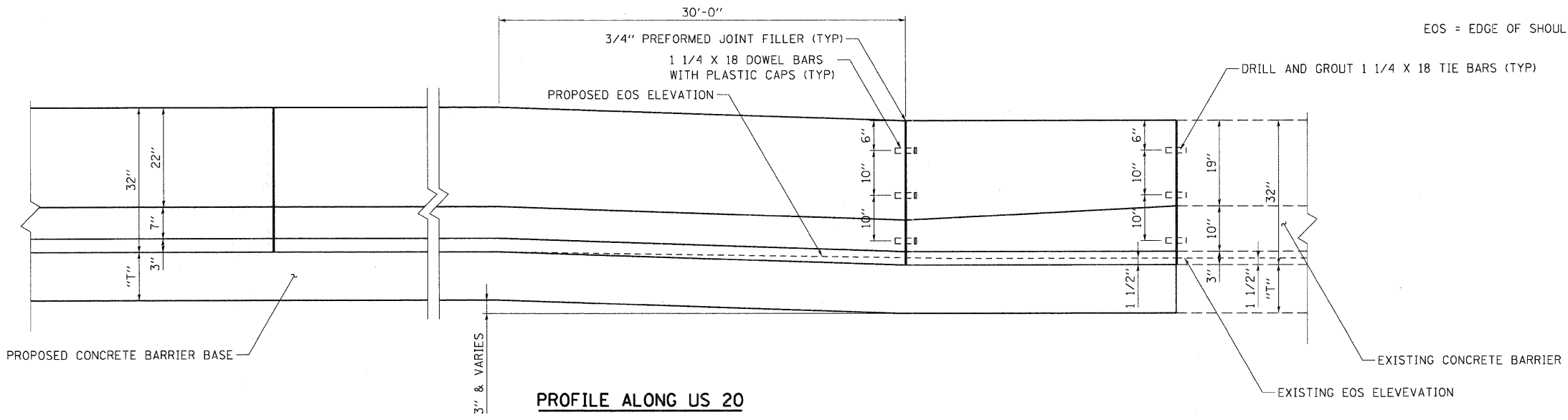
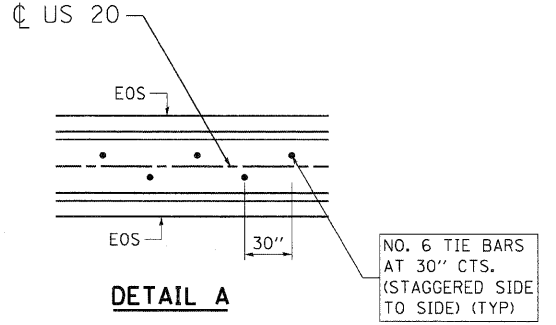


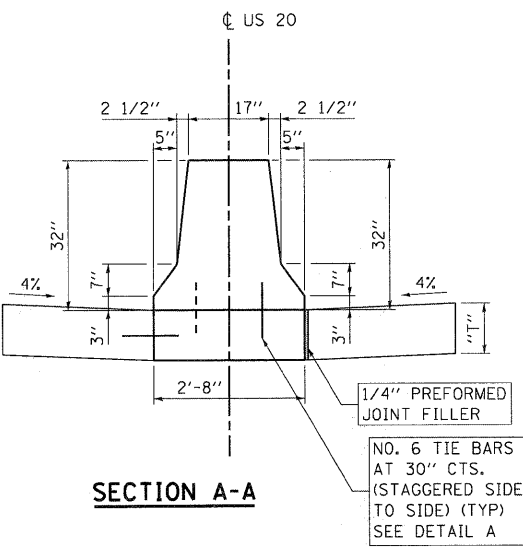
PLAN



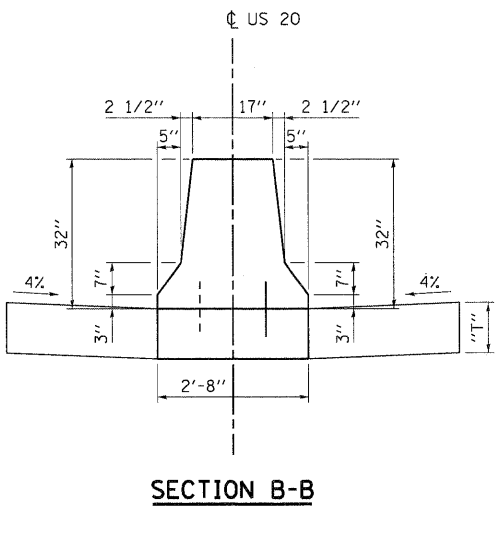
PROFILE ALONG US 20



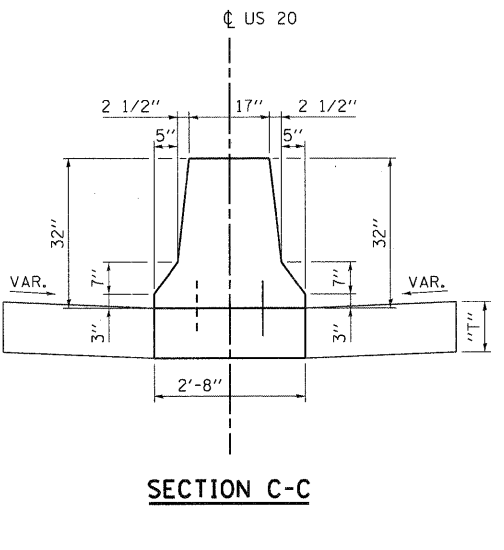
DETAIL A



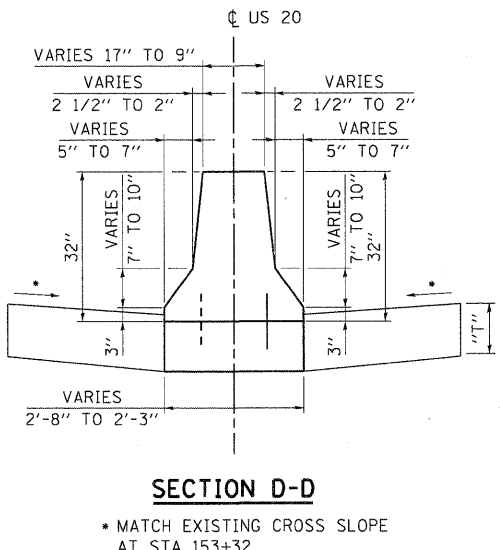
SECTION A-A



SECTION B-B

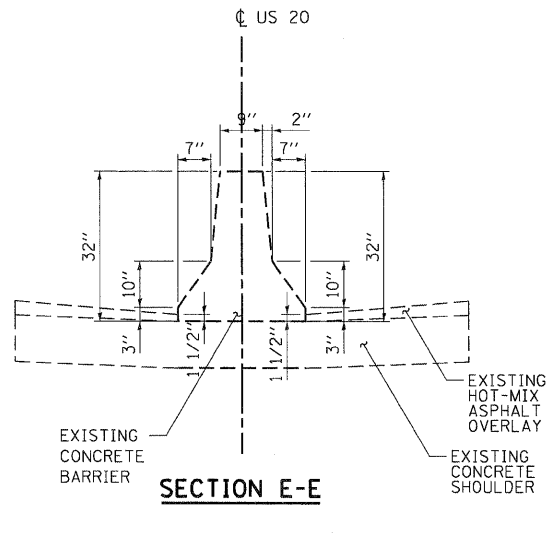


SECTION C-C



SECTION D-D

• MATCH EXISTING CROSS SLOPE AT STA 153+32



SECTION E-E

NOTES:

- FOR ADDITIONAL SHOULDER DETAILS, SEE TYPICAL SECTIONS AND STANDARDS 482006, 483001 & 601001 AS APPLICABLE.
- FOR ADDITIONAL CONCRETE BARRIER, DOUBLE FACE, 32" HEIGHT DETAILS SEE STANDARD 637001.
- THE CONTRACTOR SHALL VERIFY THE DIMENSIONS OF THE EXISTING CONCRETE BARRIER AT THE PROJECT LIMITS, AND SHALL SUBMIT ANY NECESSARY REVISIONS TO THE CONCRETE BARRIER TRANSITION THAT ARE REQUIRED TO MAINTAIN THE 26:1 TAPER AND TO MATCH THE EXISTING BARRIER TO THE ENGINEER FOR APPROVAL PRIOR TO CONSTRUCTING THE TRANSITION.
- ALL REINFORCING BARS, BAR SPLICERS, TIE BARS, AND DOWEL BARS SHALL BE SEATED IN THE FINAL POSITION PRIOR TO THE CONCRETE OPERATIONS. BARS SHALL NOT BE MUCKED INTO PLACE.
- THE COST OF FURNISHING AND PLACING TIE BARS AND DOWEL BARS SHALL BE INCLUDED IN THE CONTRACT UNIT PRICE FOR "CONCRETE BARRIER TRANSITION."
- DEPTH "T" SHALL BE A MINIMUM OF 10" OR EQUAL TO THE SHOULDER DEPTH IF GREATER.

EOS = EDGE OF SHOULDER

FILE NAME = \F5\0844\RYVAULT.D - TRANS.07\2202\21379-001\CIVIL\GDA\60844\5\SHEET.DWG\45-SHT - ROADDE TB65.DGN
 BA\ZKJKJ
 12-12-2011 12:46:14
 TENG & ASSOCIATES, INC. ENGINEERS/ARCHITECTS/PLANNERS CHICAGO, ILLINOIS

FILE NAME =	USER NAME = #USER#	DESIGNED - BRH	REVISED -	STATE OF ILLINOIS DEPARTMENT OF TRANSPORTATION FAP ROUTE 345 / US ROUTE 20	ROADWAY DETAILS CONCRETE BARRIER, DOUBLE FACED TRANSITION DETAIL		F.A.P. RTE. 345	SECTION 8R-R	COUNTY KANE	TOTAL SHEETS 794	SHEET NO. 101	
#FILEL#		DRAWN - BRH	REVISED -		SCALE: N.T.S.	SHEET NO. OF	STA. TO STA.	CONTRACT NO. 60H45				
		CHECKED - DDH	REVISED -									
		DATE - 12/16/11	REVISED -									