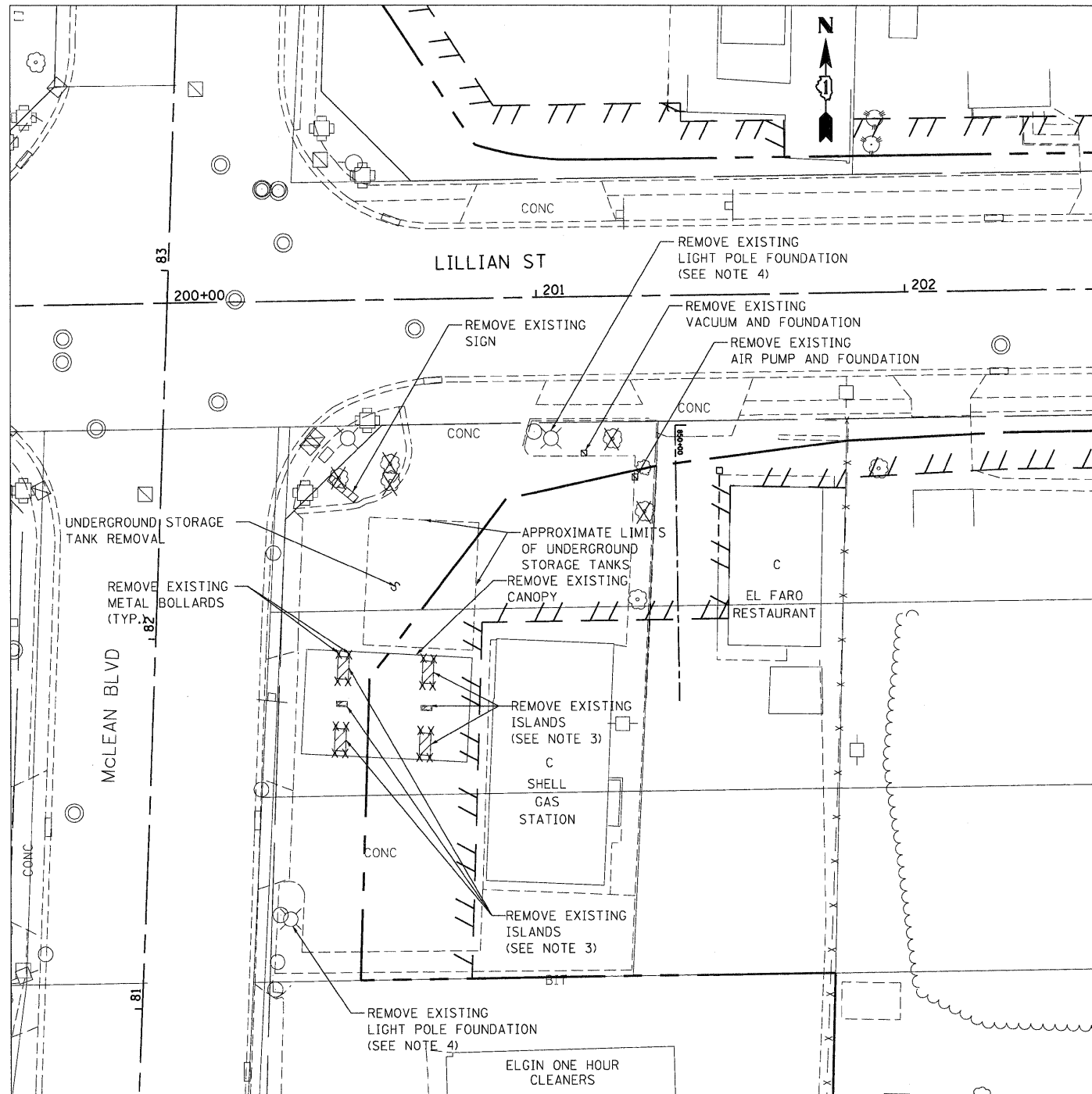


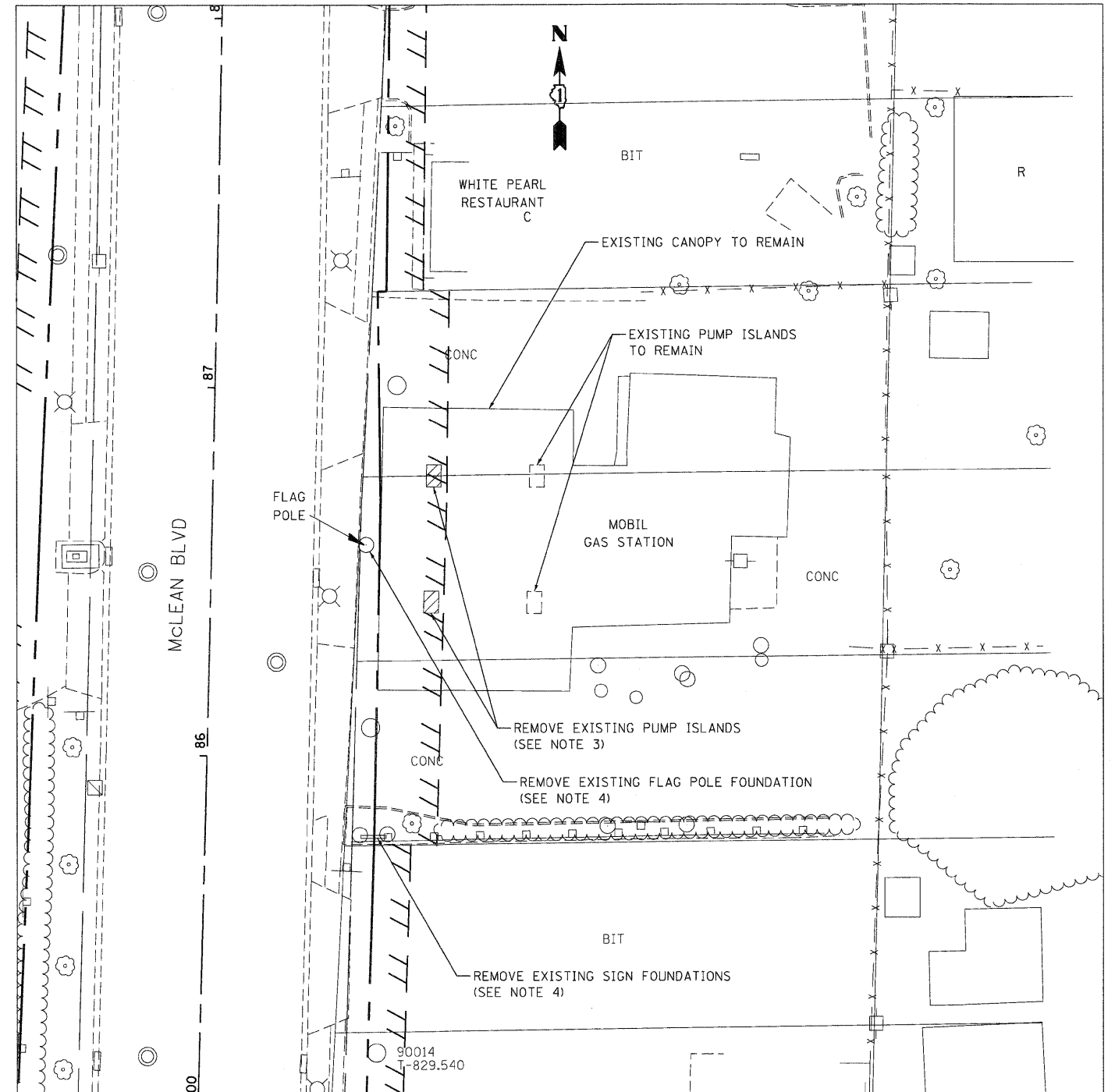
FILE NAME = \S:\PROJECTS\112022\112022_001\112022_001\CIVIL\RDY\6045\SHEET\112022_001_01.DWG
 USER = JF5
 DATE = 12/16/11
 PROJECT = SERVICE STATION EQUIPMENT REMOVAL, PARCEL 1H60017
 DRAWN BY = JF5
 CHECKED BY = DDH
 DATE = 12/16/11
 TENG & ASSOCIATES, INC.
 ENGINEERS/ARCHITECTS/PLANNERS
 CHICAGO, ILLINOIS
 90014
 T-829,540



NOTES:

1. THE COST FOR REMOVAL OF ALL ITEMS SHOWN TO BE REMOVED ON THIS DETAIL SHALL BE INCLUDED IN THE CONTRACT UNIT PRICE FOR "SERVICE STATION EQUIPMENT REMOVAL", EXCEPT THAT THE COST FOR THE REMOVAL OF THE UNDERGROUND STORAGE TANKS WILL BE PAID FOR AT THE CONTRACT UNIT PRICE FOR "UNDERGROUND STORAGE TANK REMOVAL" AND THE COST OF TREE REMOVAL WILL BE PAID FOR AT THE CONTRACT UNIT PRICE FOR "TREE REMOVAL" OF THE SIZE SPECIFIED. SEE ALSO SPECIAL PROVISION FOR "SERVICE STATION EQUIPMENT REMOVAL".
2. SEE ROADWAY PLANS FOR ADDITIONAL REMOVALS.
3. FUEL PUMPS TO BE REMOVED BY OTHERS - IDOT BUREAU OF LAND ACQUISITION.
4. LIGHT POLES TO BE REMOVED AND RELOCATED BY OTHERS - OWNER.

SERVICE STATION EQUIPMENT REMOVAL, PARCEL 1H60017



NOTES:

1. THE COST FOR REMOVAL OF ALL ITEMS SHOWN TO BE REMOVED ON THIS DETAIL SHALL BE INCLUDED IN THE CONTRACT UNIT PRICE FOR "SERVICE STATION EQUIPMENT REMOVAL". SEE ALSO SPECIAL PROVISION FOR "SERVICE STATION EQUIPMENT REMOVAL".
2. SEE ROADWAY PLANS FOR ADDITIONAL REMOVALS.
3. FUEL PUMPS TO BE REMOVED BY OTHERS - IDOT BUREAU OF LAND ACQUISITION.
4. FLAG POLE AND SIGN TO BE REMOVED AND RELOCATED BY OTHERS - OWNER.

SERVICE STATION EQUIPMENT REMOVAL, PARCEL 1H60024

FILE NAME =	USER NAME = #USER#	DESIGNED - WCS	REVISED -	STATE OF ILLINOIS		ROADWAY DETAILS		F.A.P. RTE.	SECTION	COUNTY	TOTAL SHEETS	SHEET NO.
#FILEL#		DRAWN - JF5	REVISED -	DEPARTMENT OF TRANSPORTATION		SERVICE STATION EQUIPMENT REMOVAL I		345	8R-R	KANE	794	109
		CHECKED - DDH	REVISED -	FAP ROUTE 345 / US ROUTE 20				CONTRACT NO. 60H45				
		DATE - 12/16/11	REVISED -			SCALE: 1"=20'		FED. ROAD DIST. NO. [ILLINOIS] FED. AID PROJECT				
TENG & ASSOCIATES, INC.						SHEET NO.		OF [] OF [] STA. TO STA.				