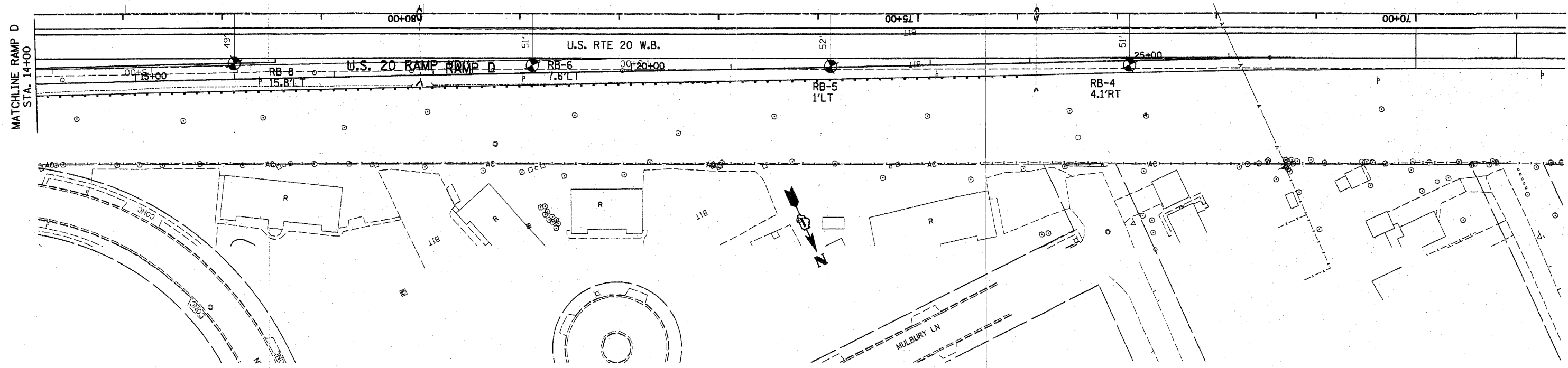
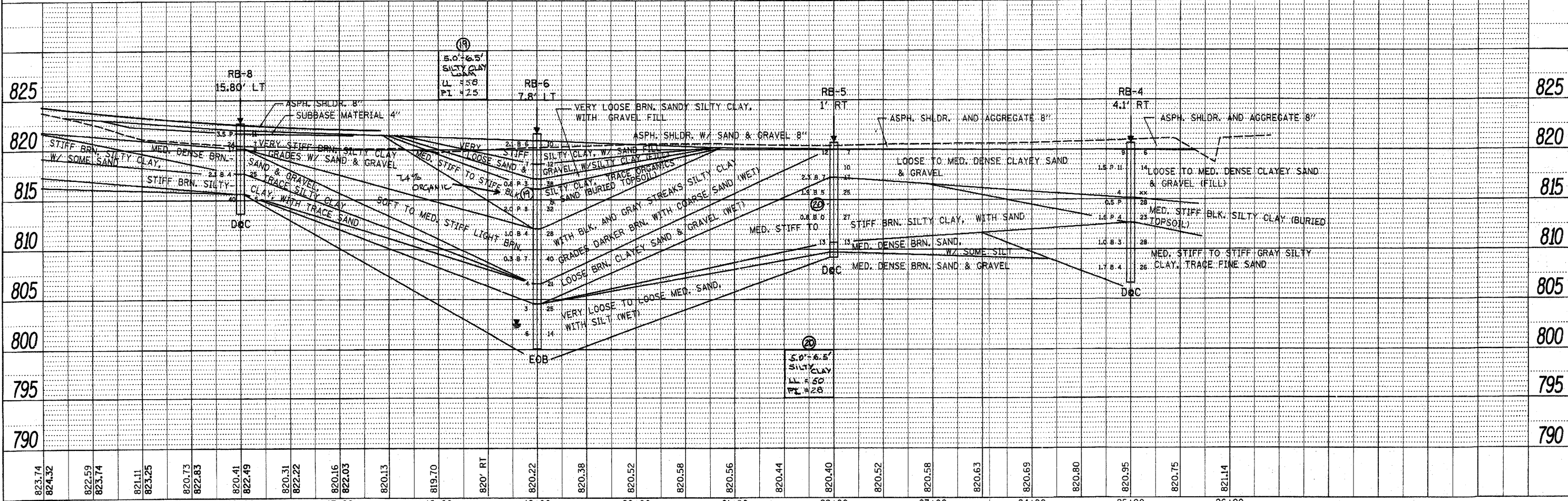


PLAN	SURVEYED	BY	DATE
	PLOTTED		
	CHECKED		
	REVISIONS		
	NO. OF WAY CHECKED		
	NO. OF STRUCTURE NOTATIONS CHECKED		
	NOTE BOOK NO.		
	CADD FILE NAME		



PROFILE	SURVEYED	BY	DATE
	PLOTTED		
	CHECKED		
	REVISIONS		
	NO. OF WAY CHECKED		
	NO. OF STRUCTURE NOTATIONS CHECKED		
	NOTE BOOK NO.		
	CADD FILE NAME		



823.74	824.32	822.59	823.74	821.11	823.25	820.73	822.83	820.41	822.49	820.31	822.22	820.16	822.03	820.13	819.70	820' RT	820.22	820.38	820.52	820.58	820.56	820.44	820.40	820.52	820.58	820.63	820.69	820.80	820.95	820.75	821.14	790	795	800	805	810	815	820	825												
14+00	15+00	16+00	17+00	18+00	19+00	20+00	21+00	22+00	23+00	24+00	25+00	26+00																																							
FILE NAME = USER NAME = lszkrf DESIGNED - REVISED - DRAWN - REVISED - CHECKED - REVISED - DATE - REVISED -																	<b>STATE OF ILLINOIS</b> <b>DEPARTMENT OF TRANSPORTATION</b>											<b>SOILS PLAN AND PROFILE</b> <b>RAMP "D" (U.S. RTE. 20)</b>										F.A.P. RTE. 345		SECTION 8R-R		COUNTY KANE		TOTAL SHEETS 794		SHEET NO. 120		CONTRACT NO. 60H45		ILLINOIS FED. AID PROJECT	