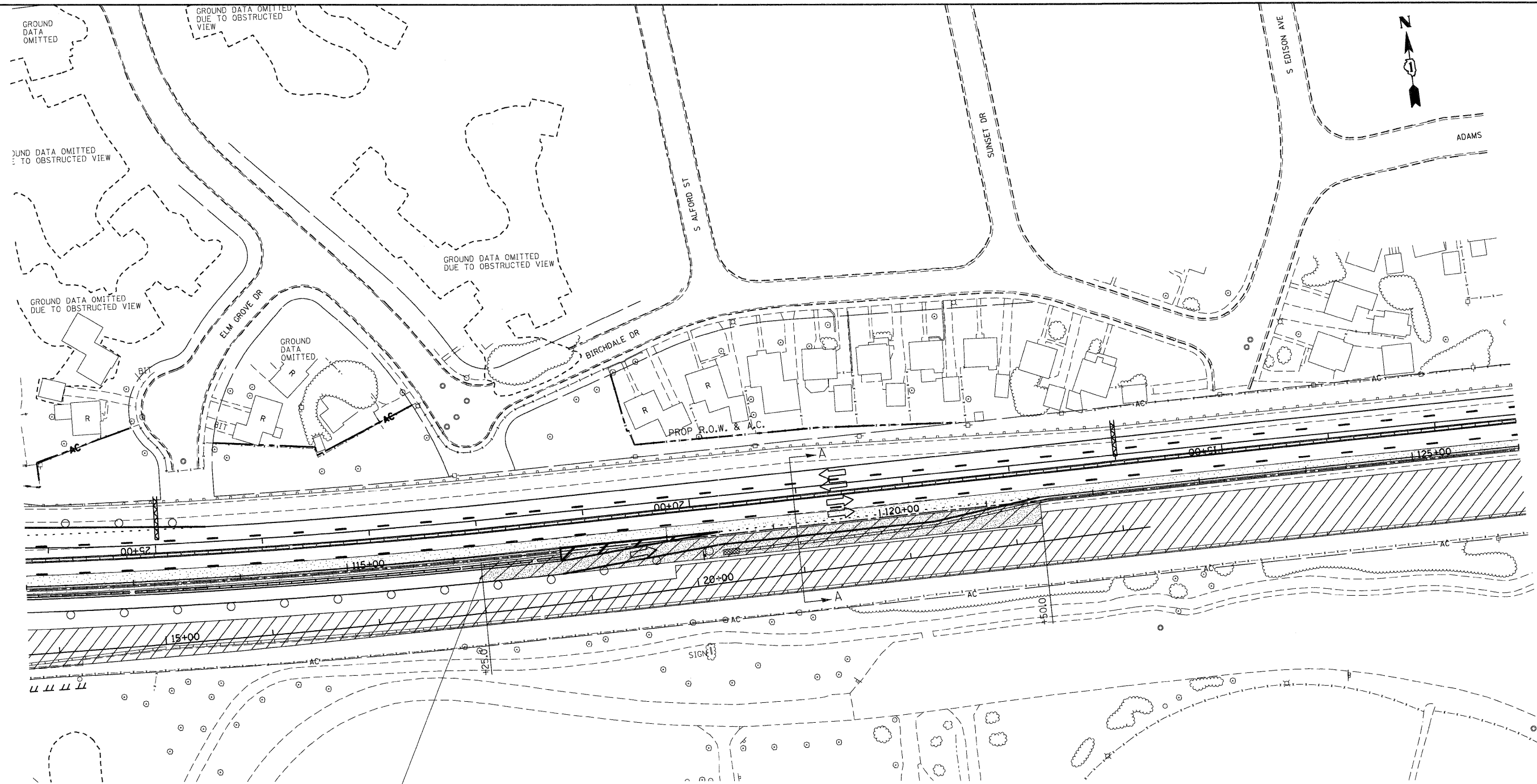


\\D:\6045-BORDER\01.DGN, \\D:\6045-LEGEND\01.DGN, \\D:\6045-DESIGN\01.DGN, \\D:\6045-STAGING\01.DGN, \\D:\6045-TOP\01.DGN, \\D:\6045-LEGEND\02.DGN, \\D:\6045-DESIGN\02.DGN, \\D:\6045-STAGING\02.DGN, \\D:\6045-TOP\02.DGN, \\D:\6045-LEGEND\03.DGN, \\D:\6045-DESIGN\03.DGN, \\D:\6045-STAGING\03.DGN, \\D:\6045-TOP\03.DGN, \\D:\6045-LEGEND\04.DGN, \\D:\6045-DESIGN\04.DGN, \\D:\6045-STAGING\04.DGN, \\D:\6045-TOP\04.DGN, \\D:\6045-LEGEND\05.DGN, \\D:\6045-DESIGN\05.DGN, \\D:\6045-STAGING\05.DGN, \\D:\6045-TOP\05.DGN, \\D:\6045-LEGEND\06.DGN, \\D:\6045-DESIGN\06.DGN, \\D:\6045-STAGING\06.DGN, \\D:\6045-TOP\06.DGN, \\D:\6045-LEGEND\07.DGN, \\D:\6045-DESIGN\07.DGN, \\D:\6045-STAGING\07.DGN, \\D:\6045-TOP\07.DGN, \\D:\6045-LEGEND\08.DGN, \\D:\6045-DESIGN\08.DGN, \\D:\6045-STAGING\08.DGN, \\D:\6045-TOP\08.DGN, \\D:\6045-LEGEND\09.DGN, \\D:\6045-DESIGN\09.DGN, \\D:\6045-STAGING\09.DGN, \\D:\6045-TOP\09.DGN, \\D:\6045-LEGEND\10.DGN, \\D:\6045-DESIGN\10.DGN, \\D:\6045-STAGING\10.DGN, \\D:\6045-TOP\10.DGN, \\D:\6045-LEGEND\11.DGN, \\D:\6045-DESIGN\11.DGN, \\D:\6045-STAGING\11.DGN, \\D:\6045-TOP\11.DGN, \\D:\6045-LEGEND\12.DGN, \\D:\6045-DESIGN\12.DGN, \\D:\6045-STAGING\12.DGN, \\D:\6045-TOP\12.DGN, \\D:\6045-LEGEND\13.DGN, \\D:\6045-DESIGN\13.DGN, \\D:\6045-STAGING\13.DGN, \\D:\6045-TOP\13.DGN, \\D:\6045-LEGEND\14.DGN, \\D:\6045-DESIGN\14.DGN, \\D:\6045-STAGING\14.DGN, \\D:\6045-TOP\14.DGN, \\D:\6045-LEGEND\15.DGN, \\D:\6045-DESIGN\15.DGN, \\D:\6045-STAGING\15.DGN, \\D:\6045-TOP\15.DGN, \\D:\6045-LEGEND\16.DGN, \\D:\6045-DESIGN\16.DGN, \\D:\6045-STAGING\16.DGN, \\D:\6045-TOP\16.DGN, \\D:\6045-LEGEND\17.DGN, \\D:\6045-DESIGN\17.DGN, \\D:\6045-STAGING\17.DGN, \\D:\6045-TOP\17.DGN, \\D:\6045-LEGEND\18.DGN, \\D:\6045-DESIGN\18.DGN, \\D:\6045-STAGING\18.DGN, \\D:\6045-TOP\18.DGN, \\D:\6045-LEGEND\19.DGN, \\D:\6045-DESIGN\19.DGN, \\D:\6045-STAGING\19.DGN, \\D:\6045-TOP\19.DGN, \\D:\6045-LEGEND\20.DGN, \\D:\6045-DESIGN\20.DGN, \\D:\6045-STAGING\20.DGN, \\D:\6045-TOP\20.DGN, \\D:\6045-LEGEND\21.DGN, \\D:\6045-DESIGN\21.DGN, \\D:\6045-STAGING\21.DGN, \\D:\6045-TOP\21.DGN, \\D:\6045-LEGEND\22.DGN, \\D:\6045-DESIGN\22.DGN, \\D:\6045-STAGING\22.DGN, \\D:\6045-TOP\22.DGN, \\D:\6045-LEGEND\23.DGN, \\D:\6045-DESIGN\23.DGN, \\D:\6045-STAGING\23.DGN, \\D:\6045-TOP\23.DGN, \\D:\6045-LEGEND\24.DGN, \\D:\6045-DESIGN\24.DGN, \\D:\6045-STAGING\24.DGN, \\D:\6045-TOP\24.DGN, \\D:\6045-LEGEND\25.DGN, \\D:\6045-DESIGN\25.DGN, \\D:\6045-STAGING\25.DGN, \\D:\6045-TOP\25.DGN, \\D:\6045-LEGEND\26.DGN, \\D:\6045-DESIGN\26.DGN, \\D:\6045-STAGING\26.DGN, \\D:\6045-TOP\26.DGN, \\D:\6045-LEGEND\27.DGN, \\D:\6045-DESIGN\27.DGN, \\D:\6045-STAGING\27.DGN, \\D:\6045-TOP\27.DGN, \\D:\6045-LEGEND\28.DGN, \\D:\6045-DESIGN\28.DGN, \\D:\6045-STAGING\28.DGN, \\D:\6045-TOP\28.DGN, \\D:\6045-LEGEND\29.DGN, \\D:\6045-DESIGN\29.DGN, \\D:\6045-STAGING\29.DGN, \\D:\6045-TOP\29.DGN, \\D:\6045-LEGEND\30.DGN, \\D:\6045-DESIGN\30.DGN, \\D:\6045-STAGING\30.DGN, \\D:\6045-TOP\30.DGN, \\D:\6045-LEGEND\31.DGN, \\D:\6045-DESIGN\31.DGN, \\D:\6045-STAGING\31.DGN, \\D:\6045-TOP\31.DGN, \\D:\6045-LEGEND\32.DGN, \\D:\6045-DESIGN\32.DGN, \\D:\6045-STAGING\32.DGN, \\D:\6045-TOP\32.DGN, \\D:\6045-LEGEND\33.DGN, \\D:\6045-DESIGN\33.DGN, \\D:\6045-STAGING\33.DGN, \\D:\6045-TOP\33.DGN, \\D:\6045-LEGEND\34.DGN, \\D:\6045-DESIGN\34.DGN, \\D:\6045-STAGING\34.DGN, \\D:\6045-TOP\34.DGN, \\D:\6045-LEGEND\35.DGN, \\D:\6045-DESIGN\35.DGN, \\D:\6045-STAGING\35.DGN, \\D:\6045-TOP\35.DGN, \\D:\6045-LEGEND\36.DGN, \\D:\6045-DESIGN\36.DGN, \\D:\6045-STAGING\36.DGN, \\D:\6045-TOP\36.DGN, \\D:\6045-LEGEND\37.DGN, \\D:\6045-DESIGN\37.DGN, \\D:\6045-STAGING\37.DGN, \\D:\6045-TOP\37.DGN, \\D:\6045-LEGEND\38.DGN, \\D:\6045-DESIGN\38.DGN, \\D:\6045-STAGING\38.DGN, \\D:\6045-TOP\38.DGN, \\D:\6045-LEGEND\39.DGN, \\D:\6045-DESIGN\39.DGN, \\D:\6045-STAGING\39.DGN, \\D:\6045-TOP\39.DGN, \\D:\6045-LEGEND\40.DGN, \\D:\6045-DESIGN\40.DGN, \\D:\6045-STAGING\40.DGN, \\D:\6045-TOP\40.DGN, \\D:\6045-LEGEND\41.DGN, \\D:\6045-DESIGN\41.DGN, \\D:\6045-STAGING\41.DGN, \\D:\6045-TOP\41.DGN, \\D:\6045-LEGEND\42.DGN, \\D:\6045-DESIGN\42.DGN, \\D:\6045-STAGING\42.DGN, \\D:\6045-TOP\42.DGN, \\D:\6045-LEGEND\43.DGN, \\D:\6045-DESIGN\43.DGN, \\D:\6045-STAGING\43.DGN, \\D:\6045-TOP\43.DGN, \\D:\6045-LEGEND\44.DGN, \\D:\6045-DESIGN\44.DGN, \\D:\6045-STAGING\44.DGN, \\D:\6045-TOP\44.DGN, \\D:\6045-LEGEND\45.DGN, \\D:\6045-DESIGN\45.DGN, \\D:\6045-STAGING\45.DGN, \\D:\6045-TOP\45.DGN, \\D:\6045-LEGEND\46.DGN, \\D:\6045-DESIGN\46.DGN, \\D:\6045-STAGING\46.DGN, \\D:\6045-TOP\46.DGN, \\D:\6045-LEGEND\47.DGN, \\D:\6045-DESIGN\47.DGN, \\D:\6045-STAGING\47.DGN, \\D:\6045-TOP\47.DGN, \\D:\6045-LEGEND\48.DGN, \\D:\6045-DESIGN\48.DGN, \\D:\6045-STAGING\48.DGN, \\D:\6045-TOP\48.DGN, \\D:\6045-LEGEND\49.DGN, \\D:\6045-DESIGN\49.DGN, \\D:\6045-STAGING\49.DGN, \\D:\6045-TOP\49.DGN, \\D:\6045-LEGEND\50.DGN, \\D:\6045-DESIGN\50.DGN, \\D:\6045-STAGING\50.DGN, \\D:\6045-TOP\50.DGN, \\D:\6045-LEGEND\51.DGN, \\D:\6045-DESIGN\51.DGN, \\D:\6045-STAGING\51.DGN, \\D:\6045-TOP\51.DGN, \\D:\6045-LEGEND\52.DGN, \\D:\6045-DESIGN\52.DGN, \\D:\6045-STAGING\52.DGN, \\D:\6045-TOP\52.DGN, \\D:\6045-LEGEND\53.DGN, \\D:\6045-DESIGN\53.DGN, \\D:\6045-STAGING\53.DGN, \\D:\6045-TOP\53.DGN, \\D:\6045-LEGEND\54.DGN, \\D:\6045-DESIGN\54.DGN, \\D:\6045-STAGING\54.DGN, \\D:\6045-TOP\54.DGN, \\D:\6045-LEGEND\55.DGN, \\D:\6045-DESIGN\55.DGN, \\D:\6045-STAGING\55.DGN, \\D:\6045-TOP\55.DGN, \\D:\6045-LEGEND\56.DGN, \\D:\6045-DESIGN\56.DGN, \\D:\6045-STAGING\56.DGN, \\D:\6045-TOP\56.DGN, \\D:\6045-LEGEND\57.DGN, \\D:\6045-DESIGN\57.DGN, \\D:\6045-STAGING\57.DGN, \\D:\6045-TOP\57.DGN, \\D:\6045-LEGEND\58.DGN, \\D:\6045-DESIGN\58.DGN, \\D:\6045-STAGING\58.DGN, \\D:\6045-TOP\58.DGN, \\D:\6045-LEGEND\59.DGN, \\D:\6045-DESIGN\59.DGN, \\D:\6045-STAGING\59.DGN, \\D:\6045-TOP\59.DGN, \\D:\6045-LEGEND\60.DGN, \\D:\6045-DESIGN\60.DGN, \\D:\6045-STAGING\60.DGN, \\D:\6045-TOP\60.DGN, \\D:\6045-LEGEND\61.DGN, \\D:\6045-DESIGN\61.DGN, \\D:\6045-STAGING\61.DGN, \\D:\6045-TOP\61.DGN, \\D:\6045-LEGEND\62.DGN, \\D:\6045-DESIGN\62.DGN, \\D:\6045-STAGING\62.DGN, \\D:\6045-TOP\62.DGN, \\D:\6045-LEGEND\63.DGN, \\D:\6045-DESIGN\63.DGN, \\D:\6045-STAGING\63.DGN, \\D:\6045-TOP\63.DGN, \\D:\6045-LEGEND\64.DGN, \\D:\6045-DESIGN\64.DGN, \\D:\6045-STAGING\64.DGN, \\D:\6045-TOP\64.DGN, \\D:\6045-LEGEND\65.DGN, \\D:\6045-DESIGN\65.DGN, \\D:\6045-STAGING\65.DGN, \\D:\6045-TOP\65.DGN, \\D:\6045-LEGEND\66.DGN, \\D:\6045-DESIGN\66.DGN, \\D:\6045-STAGING\66.DGN, \\D:\6045-TOP\66.DGN, \\D:\6045-LEGEND\67.DGN, \\D:\6045-DESIGN\67.DGN, \\D:\6045-STAGING\67.DGN, \\D:\6045-TOP\67.DGN, \\D:\6045-LEGEND\68.DGN, \\D:\6045-DESIGN\68.DGN, \\D:\6045-STAGING\68.DGN, \\D:\6045-TOP\68.DGN, \\D:\6045-LEGEND\69.DGN, \\D:\6045-DESIGN\69.DGN, \\D:\6045-STAGING\69.DGN, \\D:\6045-TOP\69.DGN, \\D:\6045-LEGEND\70.DGN, \\D:\6045-DESIGN\70.DGN, \\D:\6045-STAGING\70.DGN, \\D:\6045-TOP\70.DGN, \\D:\6045-LEGEND\71.DGN, \\D:\6045-DESIGN\71.DGN, \\D:\6045-STAGING\71.DGN, \\D:\6045-TOP\71.DGN, \\D:\6045-LEGEND\72.DGN, \\D:\6045-DESIGN\72.DGN, \\D:\6045-STAGING\72.DGN, \\D:\6045-TOP\72.DGN, \\D:\6045-LEGEND\73.DGN, \\D:\6045-DESIGN\73.DGN, \\D:\6045-STAGING\73.DGN, \\D:\6045-TOP\73.DGN, \\D:\6045-LEGEND\74.DGN, \\D:\6045-DESIGN\74.DGN, \\D:\6045-STAGING\74.DGN, \\D:\6045-TOP\74.DGN, \\D:\6045-LEGEND\75.DGN, \\D:\6045-DESIGN\75.DGN, \\D:\6045-STAGING\75.DGN, \\D:\6045-TOP\75.DGN, \\D:\6045-LEGEND\76.DGN, \\D:\6045-DESIGN\76.DGN, \\D:\6045-STAGING\76.DGN, \\D:\6045-TOP\76.DGN, \\D:\6045-LEGEND\77.DGN, \\D:\6045-DESIGN\77.DGN, \\D:\6045-STAGING\77.DGN, \\D:\6045-TOP\77.DGN, \\D:\6045-LEGEND\78.DGN, \\D:\6045-DESIGN\78.DGN, \\D:\6045-STAGING\78.DGN, \\D:\6045-TOP\78.DGN, \\D:\6045-LEGEND\79.DGN, \\D:\6045-DESIGN\79.DGN, \\D:\6045-STAGING\79.DGN, \\D:\6045-TOP\79.DGN, \\D:\6045-LEGEND\80.DGN, \\D:\6045-DESIGN\80.DGN, \\D:\6045-STAGING\80.DGN, \\D:\6045-TOP\80.DGN, \\D:\6045-LEGEND\81.DGN, \\D:\6045-DESIGN\81.DGN, \\D:\6045-STAGING\81.DGN, \\D:\6045-TOP\81.DGN, \\D:\6045-LEGEND\82.DGN, \\D:\6045-DESIGN\82.DGN, \\D:\6045-STAGING\82.DGN, \\D:\6045-TOP\82.DGN, \\D:\6045-LEGEND\83.DGN, \\D:\6045-DESIGN\83.DGN, \\D:\6045-STAGING\83.DGN, \\D:\6045-TOP\83.DGN, \\D:\6045-LEGEND\84.DGN, \\D:\6045-DESIGN\84.DGN, \\D:\6045-STAGING\84.DGN, \\D:\6045-TOP\84.DGN, \\D:\6045-LEGEND\85.DGN, \\D:\6045-DESIGN\85.DGN, \\D:\6045-STAGING\85.DGN, \\D:\6045-TOP\85.DGN, \\D:\6045-LEGEND\86.DGN, \\D:\6045-DESIGN\86.DGN, \\D:\6045-STAGING\86.DGN, \\D:\6045-TOP\86.DGN, \\D:\6045-LEGEND\87.DGN, \\D:\6045-DESIGN\87.DGN, \\D:\6045-STAGING\87.DGN, \\D:\6045-TOP\87.DGN, \\D:\6045-LEGEND\88.DGN, \\D:\6045-DESIGN\88.DGN, \\D:\6045-STAGING\88.DGN, \\D:\6045-TOP\88.DGN, \\D:\6045-LEGEND\89.DGN, \\D:\6045-DESIGN\89.DGN, \\D:\6045-STAGING\89.DGN, \\D:\6045-TOP\89.DGN, \\D:\6045-LEGEND\90.DGN, \\D:\6045-DESIGN\90.DGN, \\D:\6045-STAGING\90.DGN, \\D:\6045-TOP\90.DGN, \\D:\6045-LEGEND\91.DGN, \\D:\6045-DESIGN\91.DGN, \\D:\6045-STAGING\91.DGN, \\D:\6045-TOP\91.DGN, \\D:\6045-LEGEND\92.DGN, \\D:\6045-DESIGN\92.DGN, \\D:\6045-STAGING\92.DGN, \\D:\6045-TOP\92.DGN, \\D:\6045-LEGEND\93.DGN, \\D:\6045-DESIGN\93.DGN, \\D:\6045-STAGING\93.DGN, \\D:\6045-TOP\93.DGN, \\D:\6045-LEGEND\94.DGN, \\D:\6045-DESIGN\94.DGN, \\D:\6045-STAGING\94.DGN, \\D:\6045-TOP\94.DGN, \\D:\6045-LEGEND\95.DGN, \\D:\6045-DESIGN\95.DGN, \\D:\6045-STAGING\95.DGN, \\D:\6045-TOP\95.DGN, \\D:\6045-LEGEND\96.DGN, \\D:\6045-DESIGN\96.DGN, \\D:\6045-STAGING\96.DGN, \\D:\6045-TOP\96.DGN, \\D:\6045-LEGEND\97.DGN, \\D:\6045-DESIGN\97.DGN, \\D:\6045-STAGING\97.DGN, \\D:\6045-TOP\97.DGN, \\D:\6045-LEGEND\98.DGN, \\D:\6045-DESIGN\98.DGN, \\D:\6045-STAGING\98.DGN, \\D:\6045-TOP\98.DGN, \\D:\6045-LEGEND\99.DGN, \\D:\6045-DESIGN\99.DGN, \\D:\6045-STAGING\99.DGN, \\D:\6045-TOP\99.DGN, \\D:\6045-LEGEND\100.DGN, \\D:\6045-DESIGN\100.DGN, \\D:\6045-STAGING\100.DGN, \\D:\6045-TOP\100.DGN



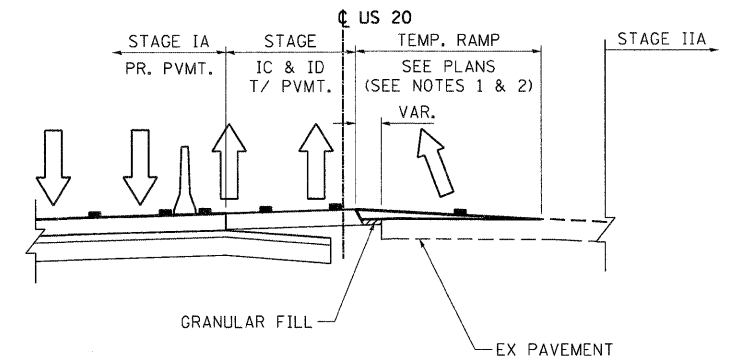
LEGEND

- WORK AREA
- IMPACT ATTENUATOR
- TEMPORARY CONCRETE BARRIER
- TYPE II BARRICADES OR DRUMS WITH STEADY BURN MONODIRECTIONAL LIGHT (AT SPECIFIED SPACING)
- DIRECTION OF TRAFFIC FLOW
- SIGN
- VERTICAL PANELS WITH STEADY BURNING LIGHTS (AT SPECIFIED SPACING)
- ARROW BOARD
- TYPE III BARRICADE
- TEMPORARY PAVEMENT, CURRENT STAGE
- TEMPORARY PAVEMENT, PREVIOUS STAGES

NOTES:

1. CONSTRUCT TEMPORARY RAMP CROSSOVER AS SHOWN IN THIS DETAIL, BEFORE THE START OF STAGE IIA.
2. TEMPORARY PAVEMENT THICKNESS WILL BE VARIABLE. TEMPORARY RAMP WITH VARIABLE THICKNESS PAVEMENT WILL BE PAID FOR AT THE CONTRACT UNIT PRICE PER SQUARE YARD FOR TEMPORARY PAVEMENT.
3. GRANULAR FILL SHALL BE PLACED MEETING THE APPROVAL OF THE ENGINEER. GRANULAR FILL WILL NOT BE PAID FOR SEPARATELY BUT THE COST OF THIS WORK SHALL BE INCLUDED IN THE CONTRACT UNIT PRICE FOR TEMPORARY PAVEMENT.

PRESTAGE TO STAGE IIA



TEMPORARY RAMP SECTION A-A BETWEEN EXISTING & STAGED PAVEMENTS

N.T.S.

FILE NAME =	USER NAME = #USER#	DESIGNED - MM	REVISED -	STATE OF ILLINOIS DEPARTMENT OF TRANSPORTATION FAP ROUTE 345 / US ROUTE 20		STAGING AND TRAFFIC CONTROL DETAIL U.S. ROUTE 20		F.A.P. RTE. 345	SECTION 8R-R	COUNTY KANE	TOTAL SHEETS 794	SHEET NO. 179	
#FILE#		DRAWN - KKS	REVISED -			SCALE: 1"=50' SHEET NO. OF STA. 112+00.00 TO STA. 126+00.00		FED. ROAD DIST. NO. [ILLINOIS] FED. AID PROJECT CONTRACT NO. 60H45					
		CHECKED - PB	REVISED -			CONTRACT NO. 60H45							
		DATE - 12/16/11	REVISED -			CONTRACT NO. 60H45							

TENG TENG & ASSOCIATES, INC.
ENGINEERS/ARCHITECTS-PLANNERS
CHICAGO, ILLINOIS