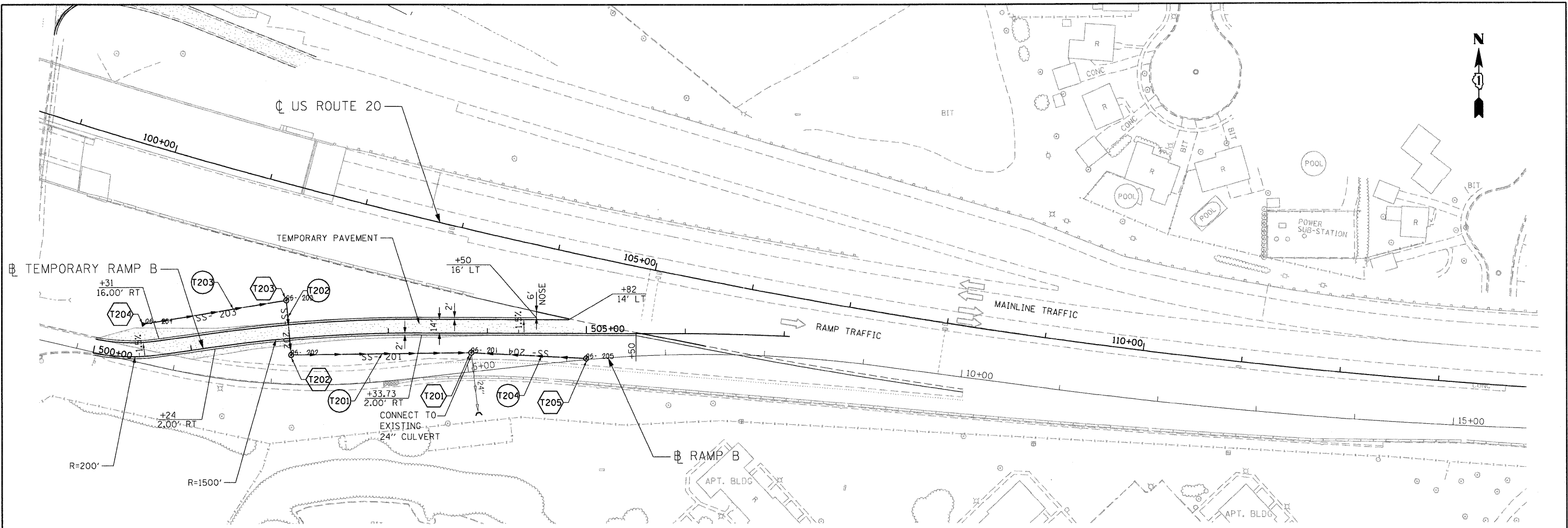


|      |                          |      |
|------|--------------------------|------|
| PLAN | SURVEYED                 | DATE |
|      | PLOTTED                  |      |
|      | GRADES CHECKED           |      |
|      | STRUCTURE NOTATIONS OK'D |      |
|      | NO. _____                |      |
|      | FILE NAME                |      |

|         |                          |      |
|---------|--------------------------|------|
| PROFILE | SURVEYED                 | DATE |
|         | PLOTTED                  |      |
|         | GRADES CHECKED           |      |
|         | STRUCTURE NOTATIONS OK'D |      |
|         | NO. _____                |      |
|         | FILE NAME                |      |



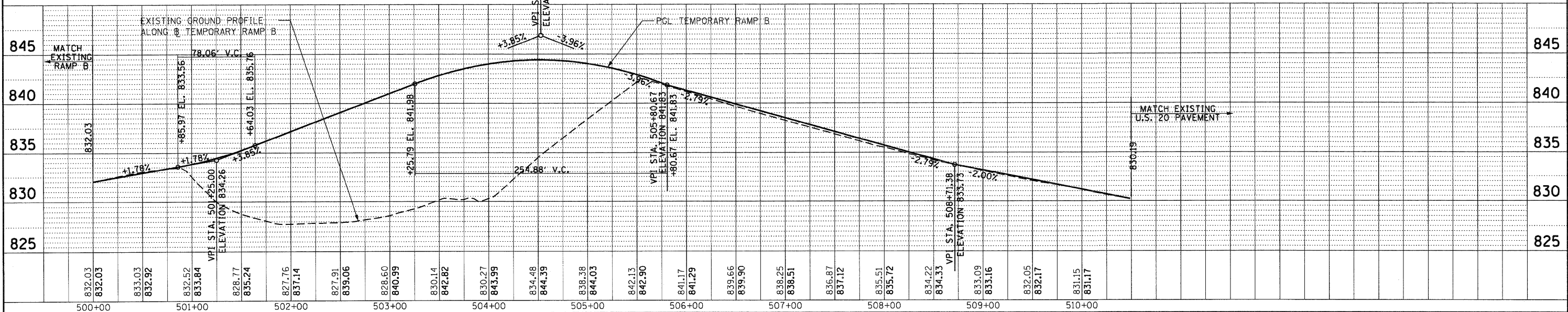
**NOTES:**

- 1) TEMPORARY RAMP "B" WILL BE UTILIZED DURING STAGE IIA
- 2) SEE PLANS FOR STAGE IIA FOR PAVEMENT MARKING.
- 3) SEE SHEET 239 FOR TEMPORARY RAMP ALIGNMENT.
- 4) SEE DRAINAGE SCHEDULES FOR TEMPORARY DRAINAGE INFORMATION.

**INTERIM PLAN FOR RAMP B**

**LEGEND**

- TXX TEMPORARY STORM SEWER
- TXX TEMPORARY DRAINAGE STRUCTURE



|             |                      |                 |           |   |  |                            |                 |                    |                     |                  |
|-------------|----------------------|-----------------|-----------|---|--|----------------------------|-----------------|--------------------|---------------------|------------------|
| FILE NAME = | USER NAME = *USER*   | DESIGNED - MM   | REVISED - | <b>STATE OF ILLINOIS<br/>DEPARTMENT OF TRANSPORTATION</b> | <b>STAGING AND TRAFFIC CONTROL<br/>TEMPORARY RAMP B<br/>PLAN AND PROFILE</b> | F.A.P. RTE.<br>345         | SECTION<br>8R-R | COUNTY<br>KANE     | TOTAL SHEETS<br>794 | SHEET NO.<br>241 |
| #FILEL*     | PLOT SCALE = *SCALE* | DRAWN - KKS     | REVISED - | FAP ROUTE 345 / US ROUTE 20                               | SCALE: HORIZ. 1"=50'    VERT. 1"=5'  | STA. 500+00 TO STA. 510+00 |                 | CONTRACT NO. 60H45 |                     |                  |
|             | PLOT DATE = *DATE*   | CHECKED - PB    | REVISED - |   | FED. ROAD DIST. NO.    ILLINOIS FED. AID PROJECT                             |                            |                 |                    |                     |                  |
|             |                      | DATE - 12/16/11 | REVISED - |   |  |                            |                 |                    |                     |                  |

12-15-2011 10:26:11 84175K41  
 \\FS-004-ARX\VALLEY.D - TRANS. 873-22823-21379-000\C:\VIL\040\9945\SHEET\016R45-SHT-3\STAGING\PRDLEN

**TENG** TENG & ASSOCIATES, INC.  
ENGINEERS/ARCHITECTS/PLANNERS  
CHICAGO, ILLINOIS