

F.A.P. RTE.	SECTION	COUNTY	TOTAL SHEETS	SHEET NO.
345	8R-R	KANE	794	299
FED. ROAD DIST. NO.	ILLINOIS	CONTRACT NO.	60H45	

STATE OF ILLINOIS
DEPARTMENT OF TRANSPORTATION
**PLAT OF HIGHWAYS
FOR PROPOSED
FEDERAL AID HIGHWAY**

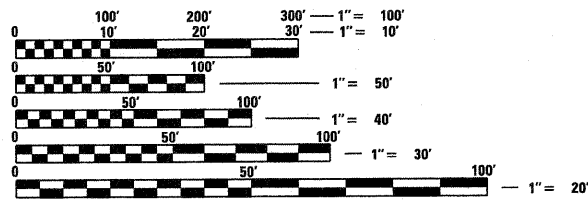
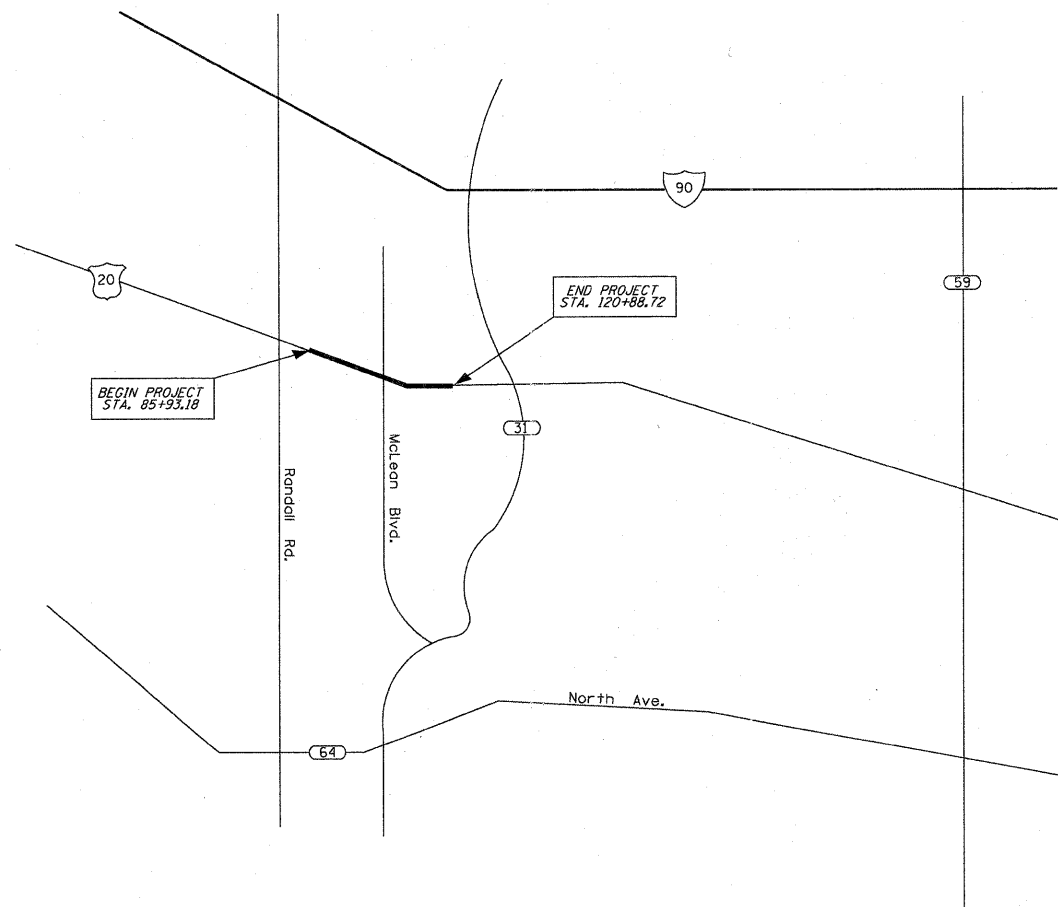
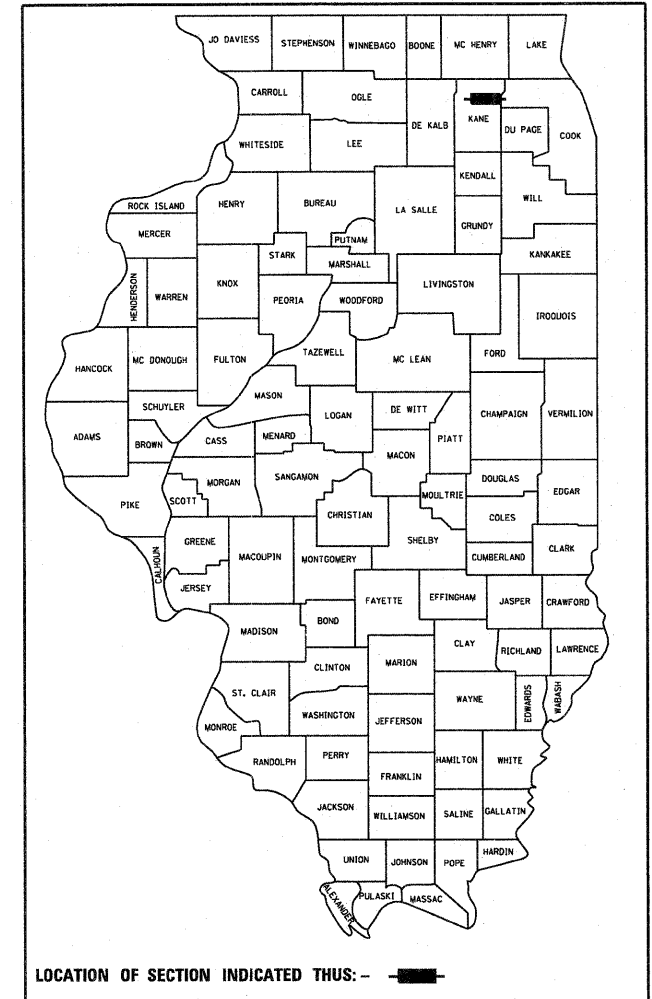
ROUTE: FAP 345 (US 20)

SECTION:

JOB NO. : R-91-017-01

COUNTY: KANE

LIMITS:



FULL SIZE PLANS HAVE BEEN PREPARED USING STANDARD ENGINEERING SCALES. REDUCED SIZED PLANS WILL NOT CONFORM TO STANDARD SCALES. IN MAKING MEASUREMENTS ON REDUCED PLANS, THE ABOVE SCALES MAY BE USED.

J.U.L.I.E.
JOINT UTILITY LOCATION INFORMATION FOR EXCAVATION
1-800-892-0123
OR 811

PROJECT ENGINEER
PROJECT MANAGER

CONTRACT NO.

PROJECT LENGTH = 3495.54 L.F. = 0.66 MILES

RUETTIGER, TONELLI & ASSOCIATES, INC.
Land Surveyors/Engineers/Planners/Landscape Architects/C.I.S. Consultants
2174 ONEIDA STREET
JOLIET, ILLINOIS 60435
PH. (815) 744-6600 FAX (815) 744-0101

APPROVED _____	20 _____
LOCAL AGENCY OFFICIAL	
APPROVED _____	20 _____
ENGINEER OF LAND ACQUISITION	
APPROVED _____	20 _____
ENGINEER OF LOCAL ROADS & STREETS	
APPROVED _____	20 _____
DISTRICT ENGINEER	
STATE OF ILLINOIS DEPARTMENT OF TRANSPORTATION	

RECEIVED
MAY 12 2011
PLATS & LEGALS

**PRINTED BY THE AUTHORITY
OF THE STATE OF ILLINOIS**