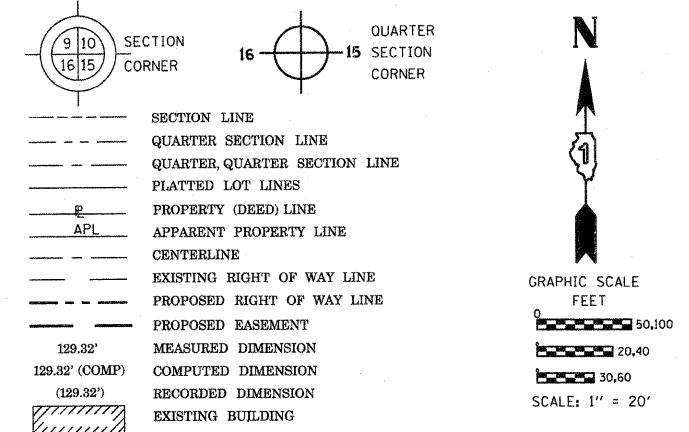


PART OF THE SW 1/4 OF SECTION 22, TWP. 41 N., R. 8 E. OF THE 3RD. P.M., IN KANE COUNTY, ILLINOIS.

PROP. CURVE-MCLEAN-1  
 PI STA. =57+31.45  
 Δ =13° 39' 07" (RT)  
 D =1° 21' 59"  
 R =4,193.46'  
 T =501.97'  
 L =999.18'  
 E =29.94'  
 e = ----  
 T.R. = ----  
 S.E. RUN = ----  
 P.C. STA =52+29.48  
 P.T. STA =62+28.66

COORDINATES SHOWN HEREON ARE ILLINOIS STATE PLANE EAST ZONE NAD 83 (2007) GRID BASED ON NGS STATION 0120 WITH PUBLISHED COORDINATES OF NORTH 1930566.76, EAST 1004454.55.

LEGEND



Bearings are referenced to the Illinois Coordinate System, NAD83, East Zone, as provided by the Illinois Department of Transportation.

○ IRON PIPE OR ROD FOUND    ⊕ "MAG" NAIL SET  
 + CUT CROSS FOUND OR SET    ● 5/8" REBAR SET

• T1 THESE STAKES REFERENCE FOUND OR SET MONUMENTATION. SET 5/8 INCH IRON ROD FLUSH WITH GROUND TO TIE FOUND IRON STAKE IDENTIFIED BY COLORED PLASTIC CAP BEARING SURVEYORS REGISTRATION NUMBER.  
 • T2  
 • T3

• BT1 THESE STAKES IN CULTIVATED AREAS REFERENCE FOUND OR SET MONUMENTATION. BURIED 5/8 INCH IRON ROD 20 INCHES BELOW GROUND TO TIE FOUND IRON STAKE. IDENTIFIED BY COLORED PLASTIC CAP BEARING SURVEYORS REGISTRATION NUMBER.  
 • BT2  
 • BT3

■ STAKING OF PROPOSED RIGHT OF WAY. SET DIVISION OF HIGHWAYS SURVEY MARKER TO MONUMENT THE POSITION SHOWN. IDENTIFIED BY INSCRIPTION DATA AND SURVEYORS REGISTRATION NUMBER.

■ M STAKING OF PROPOSED RIGHT OF WAY IN CULTIVATED AREAS. BURIED 5/8 INCH IRON ROD 20 INCHES BELOW GROUND TO MARK FUTURE SURVEY MARKER POSITION IDENTIFIED BY COLORED PLASTIC CAP BEARING SURVEYORS REGISTRATION NUMBER.

⊙ PERMANENT SURVEY MARKER, I.D.O.T. STANDARD 2135 (TO BE SET BY OTHERS)

□ RIGHT OF WAY STAKING PROPOSED TO BE SET

⊗ LIGHT POLE

REFERENCE TABLE

FROM	BEARING/ANGLE	DISTANCE	TO	DESCRIPTION
5062	NW 24 28'58"	152.48	863	CUT CROSS IN RIM OF INLET
5062	SW 65 02'12"	134.41	870	CUT CROSS IN TOP OF CURB
5062	SE 00 55'32"	121.44	871	CUT CROSS IN NE CORNER OF CONC. TANK STORAGE
5063	NW 89 43'01"	197.14	861	CUT CROSS IN CONC. TRANSFORMER PAD
5063	NW 20 55'58"	145.07	864	CUT CROSS IN RIM OF INLET
5063	SW 37 55'53"	70.81	870	CUT CROSS IN TOP OF CURB
5050	NE 54 33'11"	80.17	862	CUT CROSS IN RIM OF INLET
5050	NW 57 59'06"	85.88	864	CUT CROSS IN RIM OF INLET
5050	SW 22 50'08"	162.35	870	CUT CROSS IN TOP OF CURB
5127	NW 31 29'27"	51.57	878	CUT CROSS IN TOP OF CURB
5127	NE 80 45'49"	57.09	878	CUT CROSS IN TOP OF CURB
5127	SE 37 57'09"	75.72	879	CUT CROSS IN TOP OF CURB
5159	NW 59 54'03"	254.78	862	CUT CROSS IN RIM OF INLET
5159	NE 07 49'17"	111.66	875	CUT CROSS IN TOP OF CURB
5159	NE 85 31'28"	88.97	879	CUT CROSS IN TOP OF CURB
5161	SW 38 43'58"	328.38	872	CUT CROSS IN SE CORNER OF CONC. TANK STORAGE
5161	NE 36 36'13"	94.38	879	CUT CROSS IN TOP OF CURB
5161	NE 81 33'47"	47.00	879	CUT CROSS IN TOP OF CURB
8120	NW 41 32'01"	83.43	871	CUT CROSS IN NE CORNER OF CONC. TANK STORAGE
8120	SW 43 46'42"	157.41	873	CUT CROSS IN TOP OF CURB
8120	NE 51 54'50"	328.18	879	CUT CROSS IN TOP OF CURB
9033	SW 84 13'03"	174.77	863	CUT CROSS IN RIM OF INLET
9033	NW 43 38'19"	64.67	866	CUT CROSS IN BASE OF LIGHT POLE
9033	SE 56 04'28"	246.93	879	CUT CROSS IN TOP OF CURB
9034	NW 70 56'56"	110.82	863	CUT CROSS IN RIM OF INLET
9034	NE 13 42'12"	103.56	866	CUT CROSS IN BASE OF LIGHT POLE
9034	SE 72 57'04"	286.62	879	CUT CROSS IN TOP OF CURB
9047	NW 07 33'58"	238.16	862	CUT CROSS IN RIM OF INLET
9047	SW 35 01'22"	78.62	872	CUT CROSS IN SE CORNER OF CONC. TANK STORAGE
9047	NE 67 16'57"	301.02	879	CUT CROSS IN TOP OF CURB
9049	SW 87 30'37"	167.03	870	CUT CROSS IN TOP OF CURB
9049	SW 30 53'38"	83.84	871	CUT CROSS IN NE CORNER OF CONC. TANK STORAGE
9049	NE 75 53'07"	278.00	879	CUT CROSS IN TOP OF CURB
9052	NW 42 17'09"	233.54	862	CUT CROSS IN RIM OF INLET
9052	SW 61 07'21"	183.81	871	CUT CROSS IN NE CORNER OF CONC. TANK STORAGE
9052	NE 71 27'18"	161.03	879	CUT CROSS IN TOP OF CURB

COORDINATE TABLE

MCLEAN BLVD		NORTH		EAST	
STATION	OFFSET	PT#	NORTH	EAST	
65+01.50	-116.16	5052	1950260.540	989658.230	
63+83.45	-114.59	5062	1950148.544	989620.876	
61+99.71	-45.61	5066	1949952.007	989625.547	
63+72.52	-115.42	5071	1950138.498	989616.497	
63+03.57	-56.64	5073	1950054.045	989649.311	
63+44.55	-63.89	5074	1950095.126	989655.956	
61+99.64	-55.61	5075	1949955.167	989616.059	
65+45.87	113.70	5127	1950226.813	98989.894	
64+69.07	95.84	5159	1950160.166	989847.760	
64+83.01	135.68	5161	1950160.213	989889.968	
62+28.66	60.00	5163	1949944.932	989734.815	
64+19.93	60.00	5172	1950125.552	98977.747	
65+72.83	-70.00	8002	1950312.710	989725.290	
62+28.66	0.00	8120	1949964.673	989678.156	
65+67.54	-61.51	9033	1950304.924	989731.569	
64+94.01	-109.10	9034	1950251.141	989682.437	
63+03.68	-46.64	9047	1950050.857	989658.789	
63+51.54	-55.61	9049	1950099.071	989665.886	
64+06.22	50.00	9052	1950115.894	989783.792	
64+73.16	0.00	9293	1950195.553	989758.599	

COORDINATE TABLE

FLEETWOOD DRIVE		NORTH		EAST	
STATION	OFFSET	PT#	NORTH	EAST	
308+03.91	-47.91	5050	1950241.440	989562.025	
308+03.91	-57.91	5051	1950251.440	989561.921	
309+00.30	-66.02	5052	1950260.540	989568.230	
308+61.80	45.59	5062	1950148.544	989620.876	
307+83.39	45.59	5063	1950147.733	989542.468	
307+21.33	41.08	5065	1950151.613	989480.365	
307+21.33	56.12	5068	1950136.574	989480.520	
307+83.39	55.59	5069	1950137.734	989542.571	
308+57.32	55.59	5071	1950138.498	989616.497	
307+83.39	60.63	5072	1950132.694	989542.624	
311+31.61	-29.91	5127	1950226.813	989889.894	
310+88.79	36.30	5159	1950160.166	989847.760	
311+31.00	36.69	5161	1950160.213	989889.968	
310+38.42	70.40	5172	1950125.552	989797.747	
309+04.41	-56.57	9034	1950251.141	989662.437	
311+64.36	0.00	9291	1950197.244	989922.953	
310+00.00	0.00	9293	1950195.553	989758.599	

STATE OF ILLINOIS )  
 ) SS  
 COUNTY OF WILL )  
 THIS IS TO CERTIFY THAT I, RONALD F. HODGEN, AN ILLINOIS PROFESSIONAL LAND SURVEYOR, (WE, RUETTIGER, TONELLI & ASSOCIATES, AN ILLINOIS PROFESSIONAL DESIGN FIRM LAND SURVEYING CORPORATION, NUMBER 89,) HAVE SURVEYED THE PLAT OF HIGHWAYS SHOWN HEREON IN SECTION 22, TOWNSHIP 41 NORTH, RANGE 8 EAST OF THE THIRD PRINCIPAL MERIDIAN, KANE COUNTY, THAT THE SURVEY IS TRUE AND COMPLETE AS SHOWN TO THE BEST OF MY KNOWLEDGE AND BELIEF, THAT THE PLAT CORRECTLY REPRESENTS SAID SURVEY, THAT ALL MONUMENTS FOUND AND ESTABLISHED ARE OF PERMANENT QUALITY AND OCCUPY THE POSITIONS SHOWN THEREON AND THAT THE MONUMENTS ARE SUFFICIENT TO ENABLE THE SURVEY TO BE RETRACED, MADE FOR THE DEPARTMENT OF TRANSPORTATION, STATE OF ILLINOIS.

DATED AT JOLIET, ILLINOIS THIS 11th DAY OF NOVEMBER, 2009 A.D.

ILLINOIS PROFESSIONAL LAND SURVEYOR NO. 2630  
 LICENSE EXPIRATION DATE: 11-30-2012  
 THIS PROFESSIONAL SERVICE CONFORMS TO THE CURRENT ILLINOIS MINIMUM STANDARDS FOR A BOUNDARY SURVEY.

REVISION DATE: \_\_\_\_\_ REVISION \_\_\_\_\_ MADE BY \_\_\_\_\_

SEE CONTINUATION ON SHEET 25

SEE CONTINUATION ON SHEET 28

SEE CONTINUATION ON SHEET 27

**RUETTIGER, TONELLI & ASSOCIATES, INC.**  
 Land Surveyors/Engineers/Planners/Landscape Architects/G.I.S. Consultants  
 2174 ONEIDA STREET  
 JOLIET, ILLINOIS 60435  
 PH. (815) 744-5600 FAX (815) 744-0101

**PLAT OF HIGHWAYS**  
 STATE OF ILLINOIS  
 DEPARTMENT OF TRANSPORTATION  
 FAP 345 (US 20)

SECTION: COUNTY: KANE  
 PROJECT: JOB NO.: R-91-017-01  
 STATION 62+00 TO STATION 66+00  
 SCALE: 1" = 20' SHEET 26 OF 41

BUREAU OF LAND ACQUISITION  
 201 WEST CENTER COURT  
 SCHAMBURG, ILLINOIS 60196