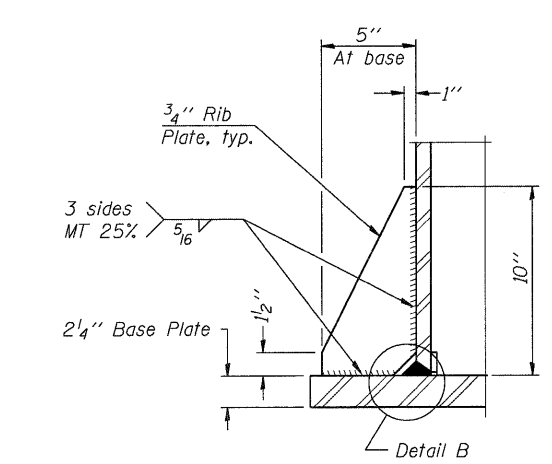
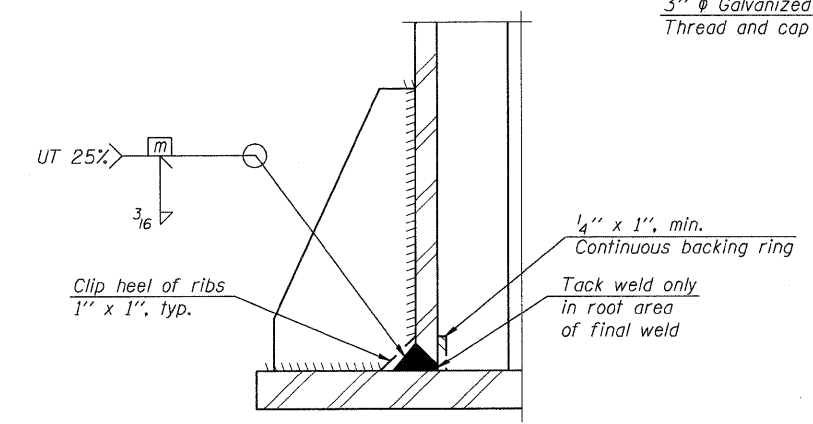


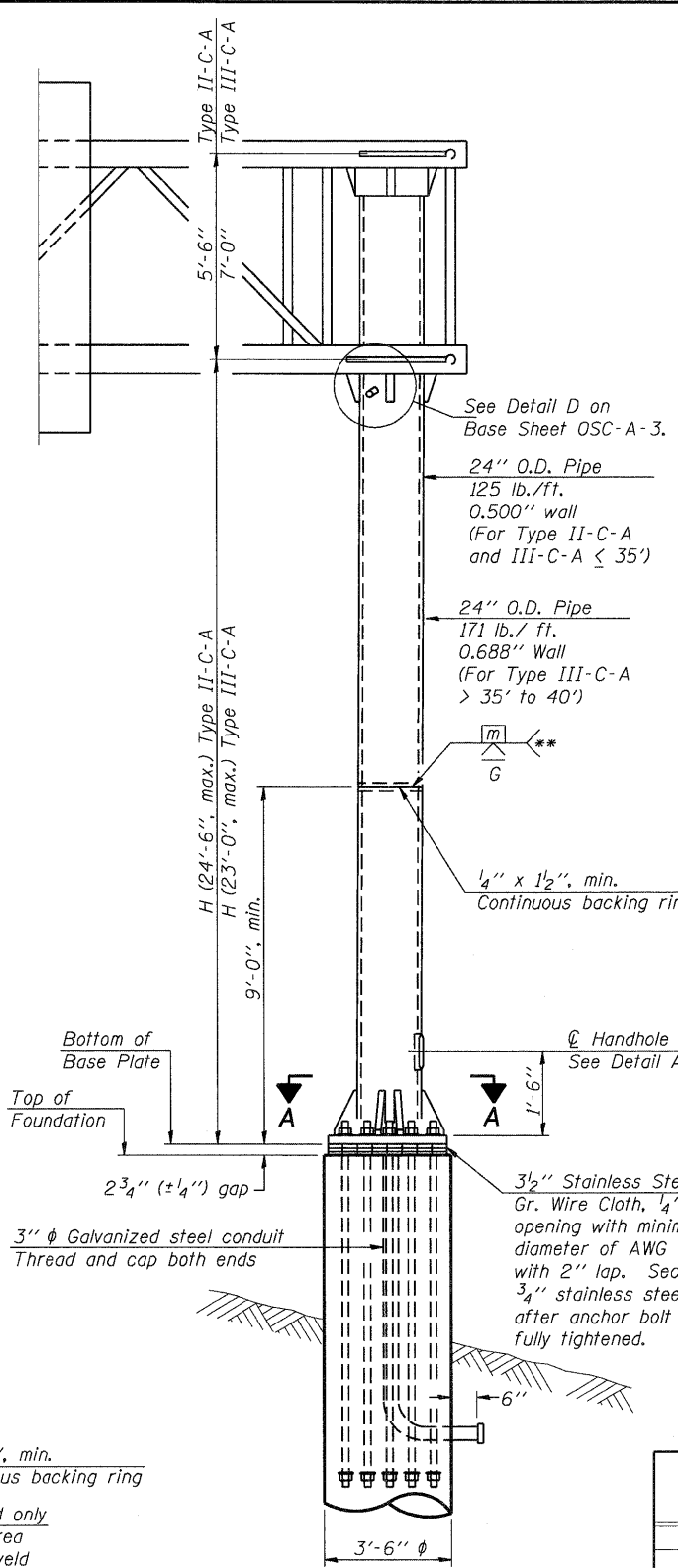
SECTION A-A



SECTION B-B

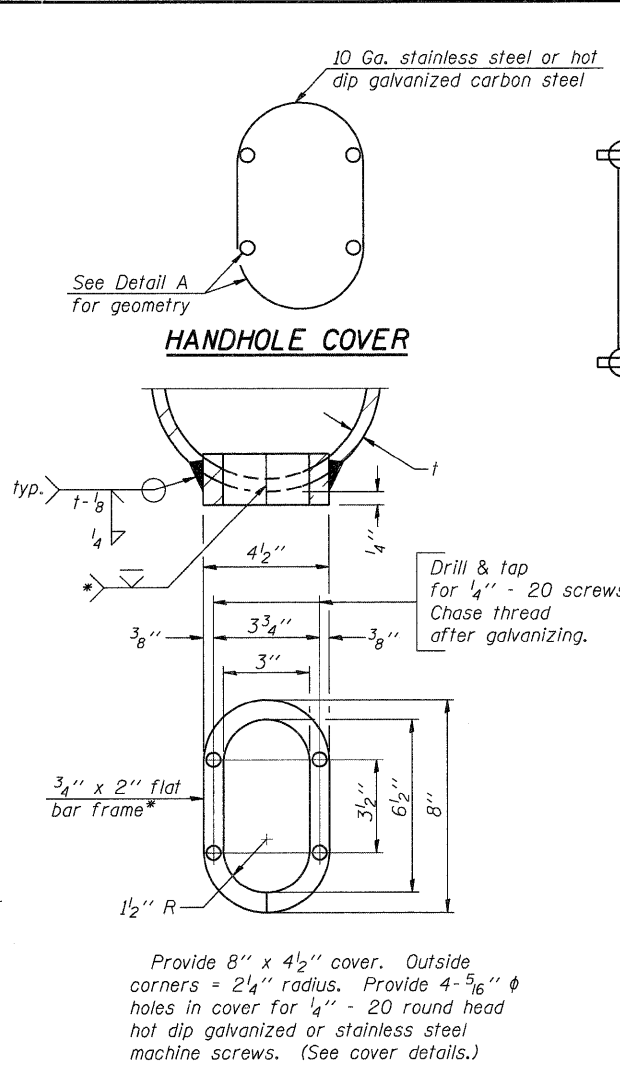


DETAIL B
(Typical rib)



FRONT ELEVATION

For Foundation Details see Base Sheet OSC-A-9.



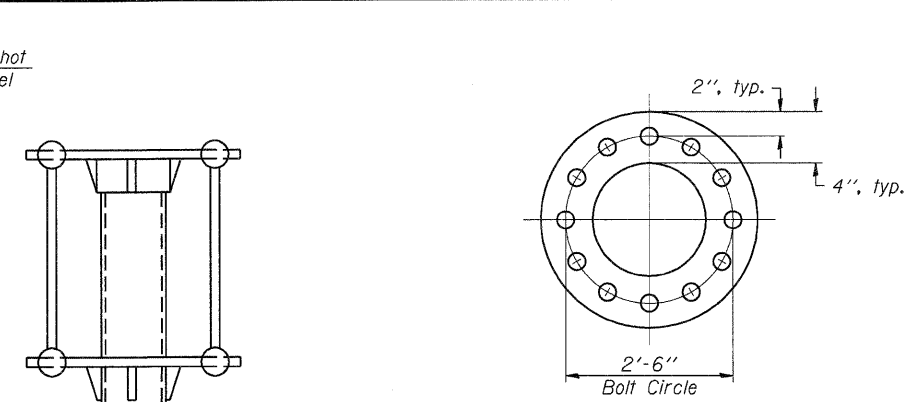
DETAIL A

* Bent bars may be butt welded top and bottom or bottom only. In lieu of fabricated handhole frame as shown, may cut from 2" plate (rolling direction vertical). All cut faces to be ground to ANSI Roughness of 500 min or less.

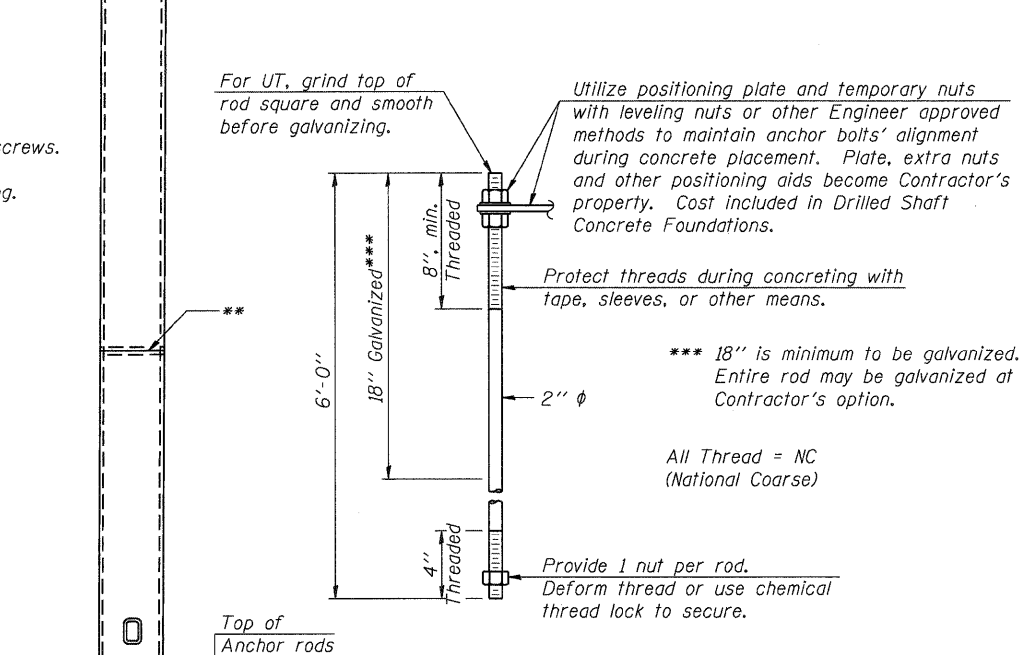
** Butt welded joint in post is only allowed for post heights (H) over 20 ft. in length. If used, weld procedure must be preapproved by Engineer and joint shall receive 100% RT or UT (tension criteria) at Contractor's expense.

Structure Number	Station	H
1C045U020R015.1	83+50.00	19'-4"
1C045U020L015.7	113+23.91	21'-11 1/4"
1C045U020L015.8	122+24.46	21'-4 3/4"
1C045U020L016.0	135+24.28	21'-9"

Note: "H" based on 15'-0" or actual sign height, whichever is greater.



SUGGESTED POSITIONING PLATE



ANCHOR ROD DETAIL

Anchor rods shall conform to ASTM F1554 Grade 105. Galvanize the upper 18" (minimum) and associated AASHTO M291, Grade A, C or DH heavy hex nuts and hardened washers per AASHTO M232. No welding shall be permitted on rods. Provide a nut at bottom, a hexagon locknut and washer above base plate and a leveling nut and washer below base plate. Nuts shall each be tightened with 200 lb.-ft. minimum torque against base plate. Before or after threading, but before galvanizing, each anchor rod shall be ultrasonically tested (UT) by a Level II or III inspector, qualified in accord with ANSI guidelines, using a straight beam, 2" diameter 3.5 mhz. transducer, to insure no rejectable flaws exist in the upper 18" (tension criteria). Cost of testing included in Drilled Shaft Concrete Foundations.

SIDE ELEVATION

OSC-A-5

1-20-11

FILE NAME =	USER NAME = #USER#	DESIGNED - AMB	REVISED -
#FILE#		DRAWN - AMB	REVISED -
	PLOT SCALE = #SCALE#	CHECKED - MDB	REVISED -
	PLOT DATE = #DATE#	DATE - 12/16/11	REVISED -

STATE OF ILLINOIS
DEPARTMENT OF TRANSPORTATION
FAP ROUTE 345 / US ROUTE 20

CANTILEVER SIGN STRUCTURES
TYPE II-C-A & III-C-A TRUSS SUPPORT POST
ALUMINUM TRUSS & STEEL POST

F.A.P. RTE.	SECTION	COUNTY	TOTAL SHEETS	SHEET NO.
345	8R-R	KANE	794	362
CONTRACT NO. 60H45				
FED. ROAD DIST. NO. ILLINOIS FED. AID PROJECT				

SCALE: N.T.S. SHEET NO. SS-5 OF SS-14 STA. TO STA.

\NFS-2004\4\VA\VAULT.T-D-TRANS.07\2202\21379-001\CIVIL\CAD\68H45\AS\ASHEET\10160H45-SHT-SIGN01\07.DGN
 12-12-2011 13:28:48
 BAJZEKJ
 TENG & ASSOCIATES, INC. ENGINEERS/ARCHITECTS/PLANNERS CHICAGO, ILLINOIS