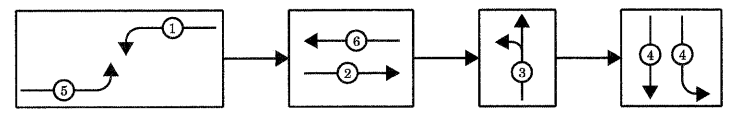
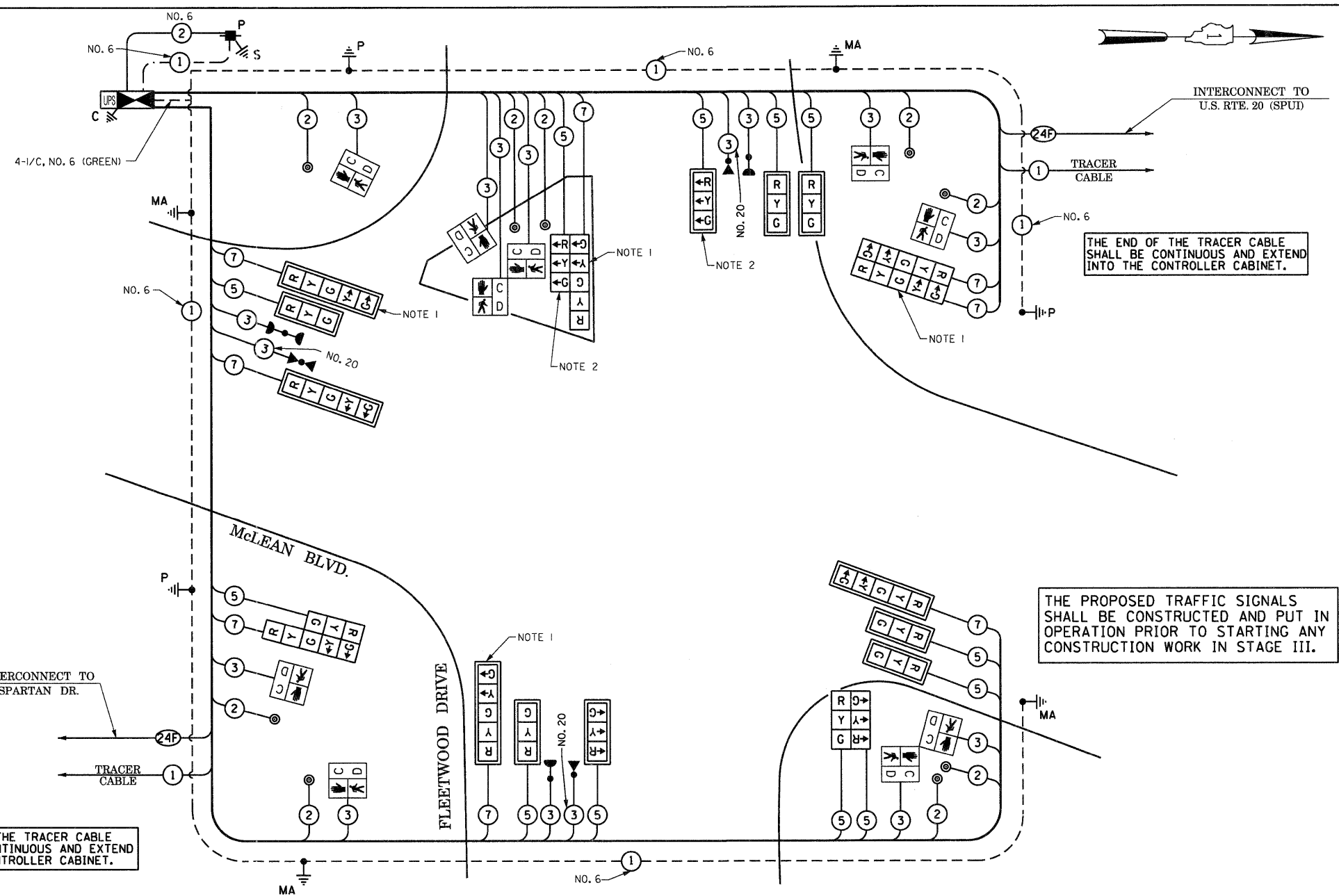


TEMPORARY PHASE DESIGNATION DIAGRAM
STAGE III

FOR PHASES 1, 2, 5, 6, AND THE SPLIT PHASES 3 AND 4 IN THE PHASE DESIGNATION DIAGRAM SHOWN ABOVE, THE FOLLOWING PHASE SEQUENCE SHALL BE FOLLOWED FOR STAGE III.

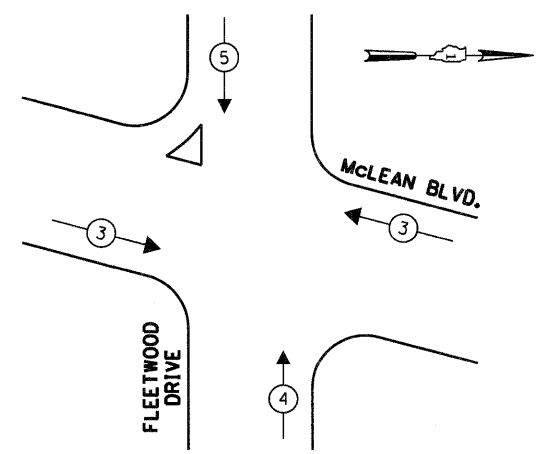


THE CONTROLLER SHALL FUNCTION AS A FIXED TIME CONTROLLER UNTIL THE ENTIRE INTERSECTION, INCLUDING THE VEHICULAR DETECTION LOOPS, IS OPEN TO TRAFFIC.



TEMPORARY CABLE PLAN
(NOT TO SCALE)
STAGE III

EMERGENCY VEHICLE PREEMPTION SEQUENCE



TEMPORARY EMERGENCY VEHICLE PREEMPTORS			
EMERGENCY VEHICLE PREEMPTOR	3	4	5
MOVEMENT	←→	↑	↓

- NOTE 1: THE GREEN AND YELLOW RIGHT INDICATION SECTIONS IN THE 5-SECTION SIGNAL HEADS FOR THE SOUTHBOUND AND EASTBOUND DIRECTION OF TRAFFIC SHALL BE DISCONNECTED AND BAGGED DURING STAGE III CONSTRUCTION.
- NOTE 2: THE LEFT GREEN ARROW INDICATION IN THE SIGNAL HEADS WITH ALL ARROW INDICATIONS AND THE CIRCULAR GREEN INDICATION IN THE SIGNAL HEADS WITH ALL CIRCULAR INDICATIONS FOR THE WESTBOUND DIRECTION OF TRAFFIC PHASE 3, IN THE PHASE DESIGNATION DIAGRAM, SHALL BE DISPLAYED SIMULTANEOUSLY. SIMILARLY, FOR THE EASTBOUND DIRECTION OF TRAFFIC PHASE 4 THE LEFT GREEN ARROW AND THE CIRCULAR GREEN INDICATIONS IN THE ARROW SECTION SIGNAL HEADS AND THE SIGNAL HEADS WITH CIRCULAR INDICATIONS SHALL BE DISPLAYED AT THE SAME TIME. THE GREEN AND YELLOW RIGHT INDICATION SECTIONS IN THE 5-SECTION SIGNAL HEADS SHALL BE DISCONNECTED AND BAGGED DURING STAGE III CONSTRUCTION.
- NOTE 3: THE DETECTOR LOOPS SHALL BE DISABLED AT THE CONTROLLER.

THE TRAFFIC SIGNAL CONTROL EQUIPMENT FOR THIS PROJECT SHALL BE "EAGLE" TO MATCH THE EXISTING ADJACENT SYSTEM.

I.D.O.T. TRAFFIC SIGNAL INSTALLATION ELECTRICAL SERVICE REQUIREMENTS					
TYPE	NO LAMPS	WATTAGE		%OPERATION	TOTAL WATTAGE
		INCAND.	LED		
SIGNAL (RED)	20	135	17	0.50	170
(YELLOW)	20	135	25	0.25	125
(GREEN)	20	135	15	0.25	75
ARROW	16	135	12	0.10	19.2
PED. SIGNAL	10	90	25	1.00	250
CONTROLLER	1	100	100	1.00	100
ILLUM. SIGN				0.05	
FLASHER				0.50	
ENERGY COSTS TO:					TOTAL =
CITY OF ELGIN 150 DEXTER COURT ELGIN, ILLINOIS 60120-5570					739.2
ENERGY SUPPLY CONTACT: ELLIE SARALLO PHONE: (630) 424 5124 COMPANY: COMMONWEALTH EDISON					