

INDEX OF SHEETS – VOLUME II OF II

473 - 534 U.S. ROUTE 20 OVER MCLEAN BLVD S.N. 045-0077
 535 - 537 MCLEAN BOULEVARD RETAINING WALL S.N. 045-W012
 538 - 559 DISTRICT ONE DETAILS *
 560 - 794 CROSS SECTIONS **

*DISTRICT ONE TRAFFIC SIGNAL AND LIGHTING DETAILS ARE INCLUDED WITH THE TRAFFIC SIGNAL AND LIGHTING PLANS
 **SEE SHEET 560 FOR INDEX OF CROSS SECTION SHEETS

US ROUTE 20
 DESIGN DESIGNATION - 56,200(12) ARTERIAL 34.29 (CRC-20)
 ADT = 42,700 (2001) - 66,000 (2020)
 DESIGN SPEED = 60 MPH
 POSTED SPEED = 55 MPH

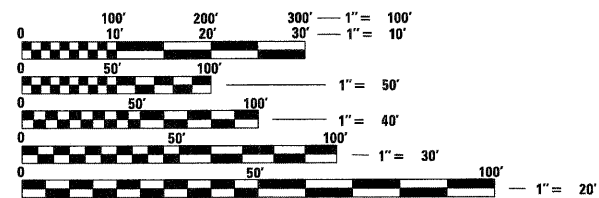
LILLIAN STREET
 ADT = 12,700 (2001) - 16,500 (2020)
 DESIGN SPEED = 35 MPH
 POSTED SPEED = 30 MPH

FLEETWOOD DRIVE
 ADT = 3,400 (2001) - 5,000 (2020)
 DESIGN SPEED = 35 MPH
 POSTED SPEED = 30 MPH

MCLEAN BOULEVARD (NORTH OF INTERCHANGE)
 ADT = 30,000 (2001) - 41,000 (2020)
 DESIGN SPEED = 35 MPH
 POSTED SPEED = 30 MPH

MCLEAN BOULEVARD (SOUTH OF INTERCHANGE)
 ADT = 26,000 (2001) - 44,000 (2020)
 DESIGN SPEED = 35 MPH
 POSTED SPEED = 35 MPH

PROJECT LOCATED IN CITY OF ELGIN



FULL SIZE PLANS HAVE BEEN PREPARED USING STANDARD ENGINEERING SCALES. REDUCED SIZED PLANS WILL NOT CONFORM TO STANDARD SCALES. IN MAKING MEASUREMENTS ON REDUCED PLANS, THE ABOVE SCALES MAY BE USED.

J.U.L.I.E.
 JOINT UTILITY LOCATION INFORMATION FOR EXCAVATION
 1-800-892-0123
 OR 811

PROJECT MANAGER BRIAN KUTTAB, P.E.
 PROJECT ENGINEER RON ZENAROSA

CONTRACT NO. 60H45

STATE OF ILLINOIS
 DEPARTMENT OF TRANSPORTATION
 DIVISION OF HIGHWAYS

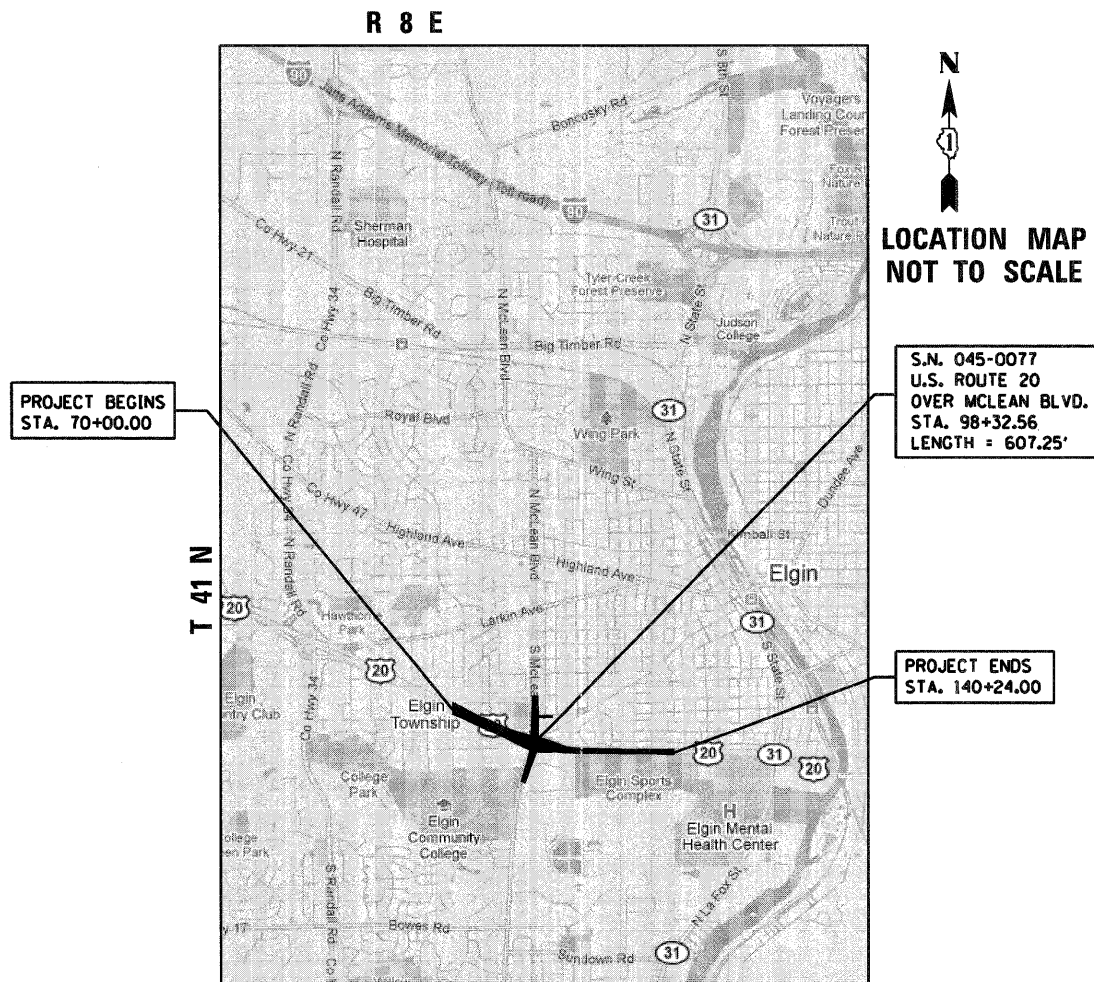
**PROPOSED
 HIGHWAY PLANS**

FAP ROUTE 345 – U.S. ROUTE 20 (LAKE STREET) OVER MCLEAN BOULEVARD
 SECTION 8R-R

PROJECT
 INTERCHANGE RECONSTRUCTION AND BRIDGE REPLACEMENT

KANE COUNTY

C-91-632-09
 VOLUME II OF II



PROJECT BEGINS
 STA. 70+00.00

S.N. 045-0077
 U.S. ROUTE 20
 OVER MCLEAN BLVD.
 STA. 98+32.56
 LENGTH = 607.25'

PROJECT ENDS
 STA. 140+24.00

GROSS LENGTH = 7,024 FT. = 1.330 MILES
 NET LENGTH = 7,024 FT. = 1.330 MILES

F.A.P. RTE.	SECTION	COUNTY	TOTAL SHEETS	SHEET NO.
345	8R-R	KANE	794	472
		ILLINOIS	CONTRACT NO. 60H45	

D-91-632-09



LOCATION OF SECTION INDICATED THIS: -

STATE OF ILLINOIS
 DEPARTMENT OF TRANSPORTATION
 DIVISION OF HIGHWAYS

SUBMITTED _____ 20 _____

DEPUTY DIRECTOR OF HIGHWAYS, REGION ENGINEER
 _____ 20 _____

ENGINEER OF DESIGN AND ENVIRONMENT
 _____ 20 _____

DIRECTOR OF HIGHWAYS, CHIEF ENGINEER

TENG

TENG & ASSOCIATES, INC.
 ENGINEERS/ARCHITECTS/PLANNERS
 205 N. MICHIGAN AVE. CHICAGO, IL 60601
 TELEPHONE: 312616-0000

**PRINTED BY THE AUTHORITY
 OF THE STATE OF ILLINOIS**