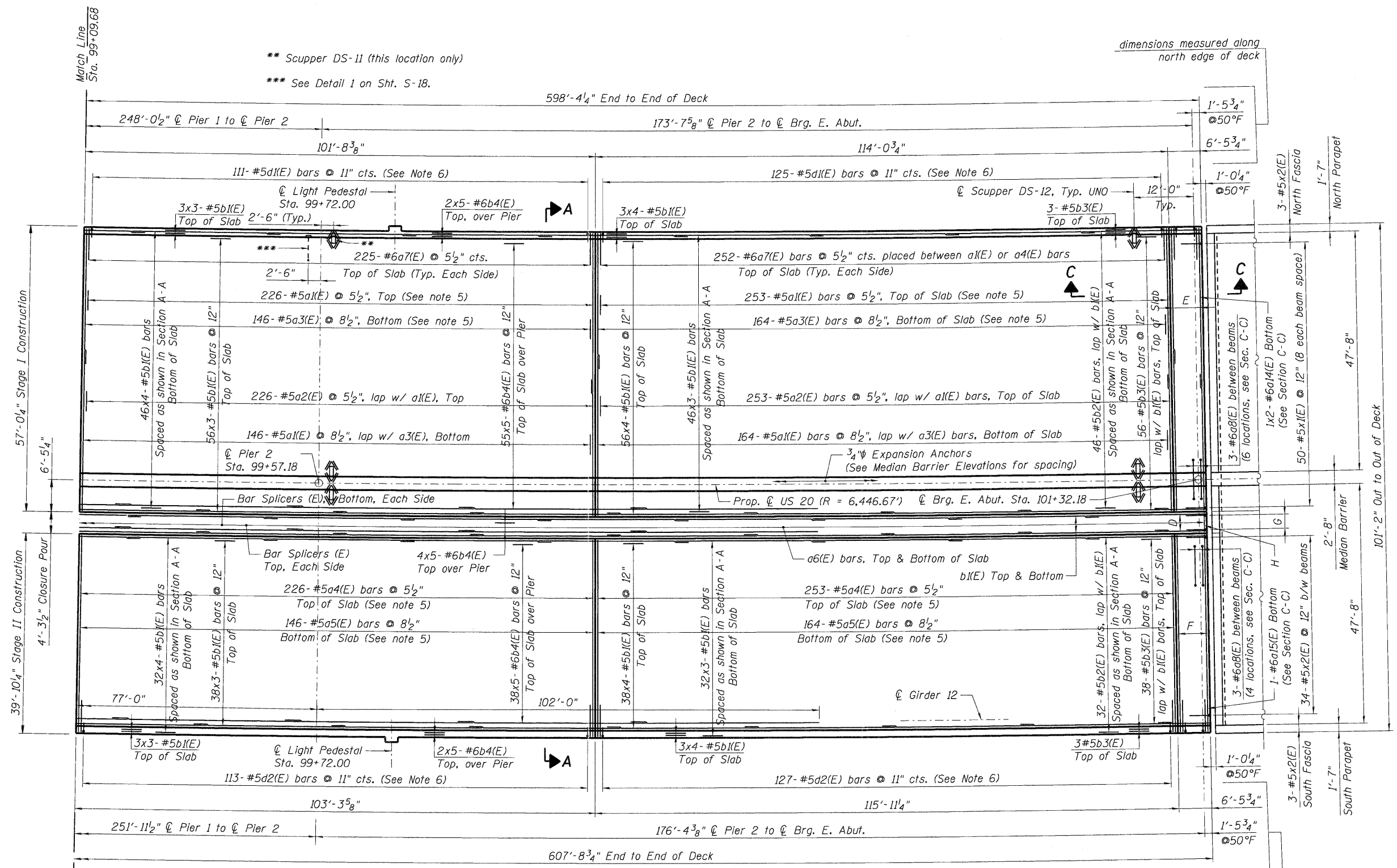
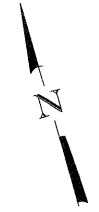


\ADMIN\MASTER-AL\TOWN\T.DGN_0450077-60H45-001-SUPER.DGN... \ILLINOIS\60H45-001-BDR.DGN
 12-12-2011, 10:38:47 BAJZEKKJ \FS-2044\AKA\VALT.D-TRANS.07\2222\21375-001\STRUCT\COA.62H45-0450077-SHEET.0450077-60H45-002-SUPER.SHT.DGN



DECK PLAN 3

- D: 5-#5b3(E) bars, Top of Slab
5-#5b2(E) bars, Bottom of Slab
- E: 15-#5a1(E) & 15-#5a2(E), Top of Slab
10-#5a3(E) & 10-#5a1(E), Bottom of Slab
14-#6a7(E), Top
8-#5d1(E)
- F: 15-#5a4(E), Top of Slab
10-#5a5(E), Bottom of Slab
14-#6a7(E), Top
8-#5d2(E)

- G: 4-#5x2(E) @ 12"
- H: 4 Sets of 2-#6a9(E) & 2-#6a10(E)
Bar Splicer Assemblies
(See Section D-D)

Note:
See Sht. S-17 for notes.

FILE NAME =	USER NAME = #USER#	DESIGNED - MDB	REVISED -	STATE OF ILLINOIS DEPARTMENT OF TRANSPORTATION US 20 OVER MCLEAN BOULEVARD	DECK PLAN 3 OF 3	F.A.P. RTE. 345	SECTION BR-R	COUNTY KANE	TOTAL SHEETS 794	SHEET NO. 491	
#FILEL#		DRAWN - MDB	REVISED -			SCALE:	SHEET NO. S-19 OF S-62	STATION 98+32.18		SN 045-0077 CONTRACT NO. 60H45	
		CHECKED - PK	REVISED -								
		DATE - 12/16/11	REVISED -								
		TENGA & ASSOCIATES, INC. ENGINEERS/ARCHITECTS/PLANNERS CHICAGO, ILLINOIS			FED. ROAD DIST. NO. 7 ILLINOIS FED. AID PROJECT						