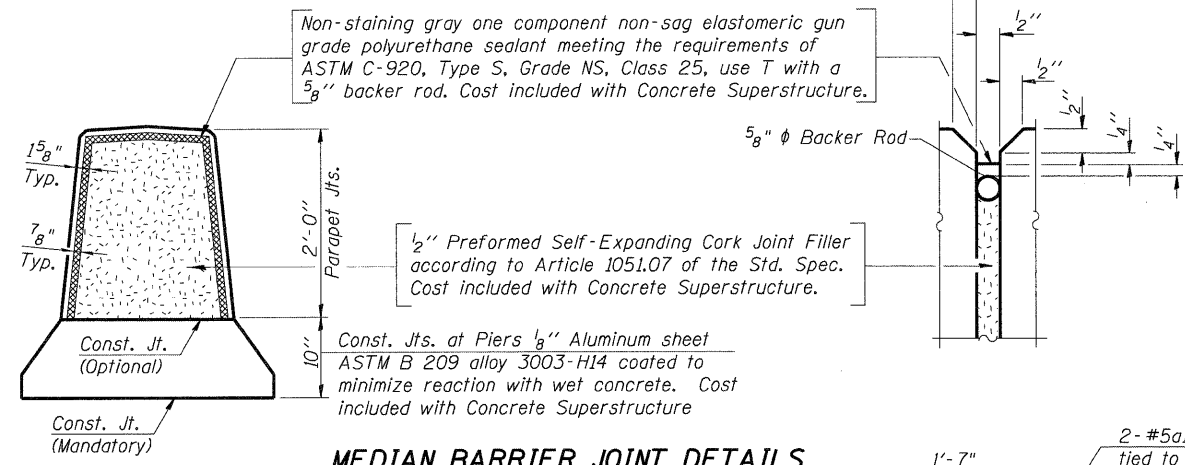
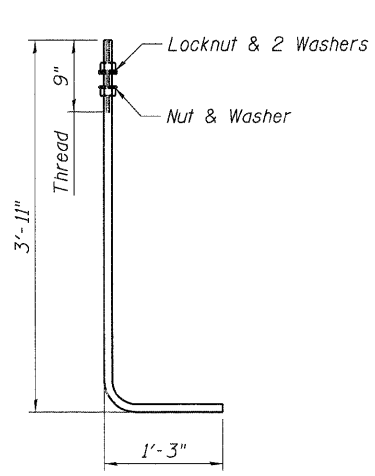


PARAPET JOINT DETAILS

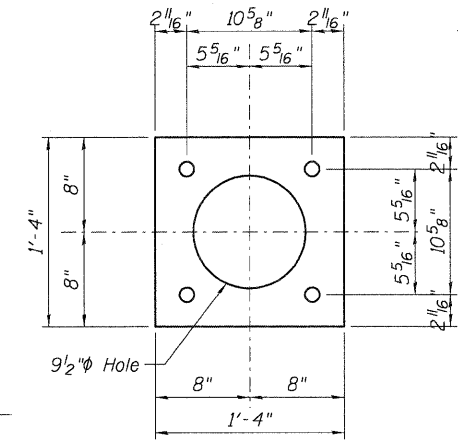


MEDIAN BARRIER JOINT DETAILS



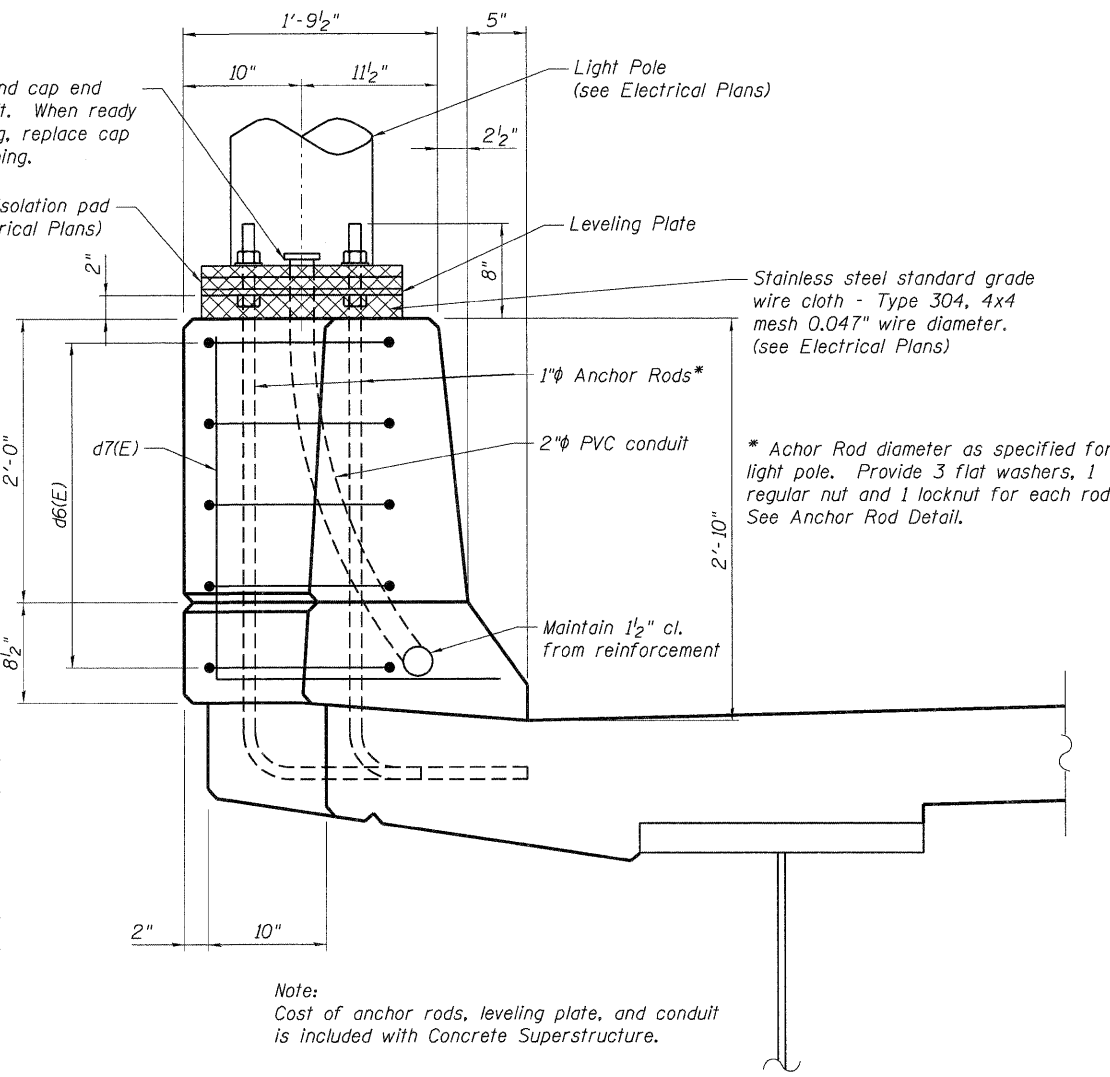
ANCHOR ROD DETAIL

1" ASTM F1554 Grade 105 (match light pole)



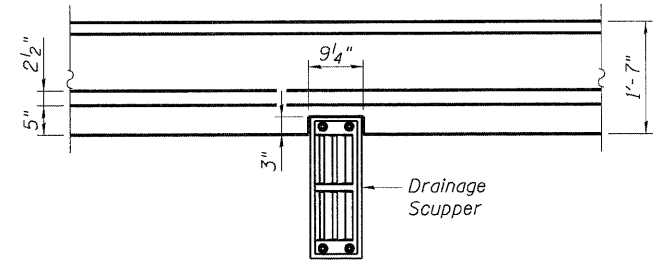
LEVELING PLATE DETAIL

1/2" Aluminum plate

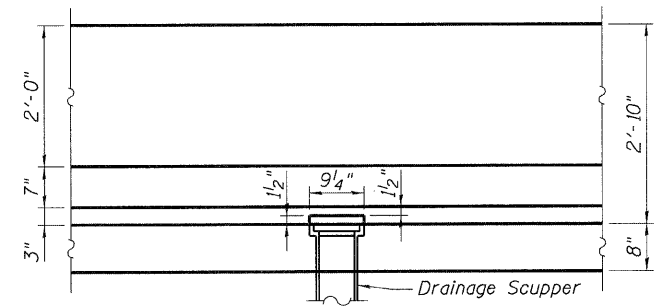


SECTION E-E

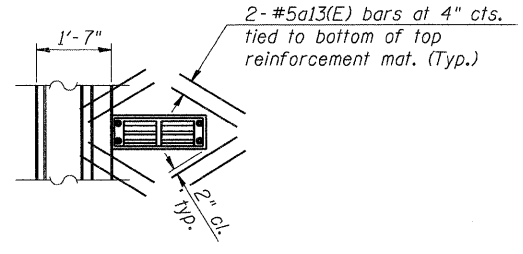
(Parapet reinforcement not shown for clarity.)



PLAN AT NORTH PARAPET SCUPPERS

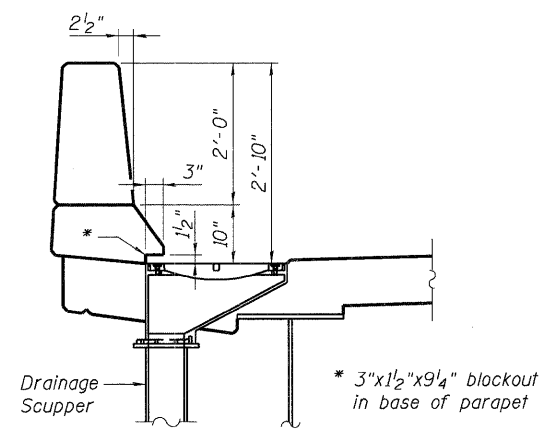


ELEVATION AT NORTH PARAPET SCUPPERS

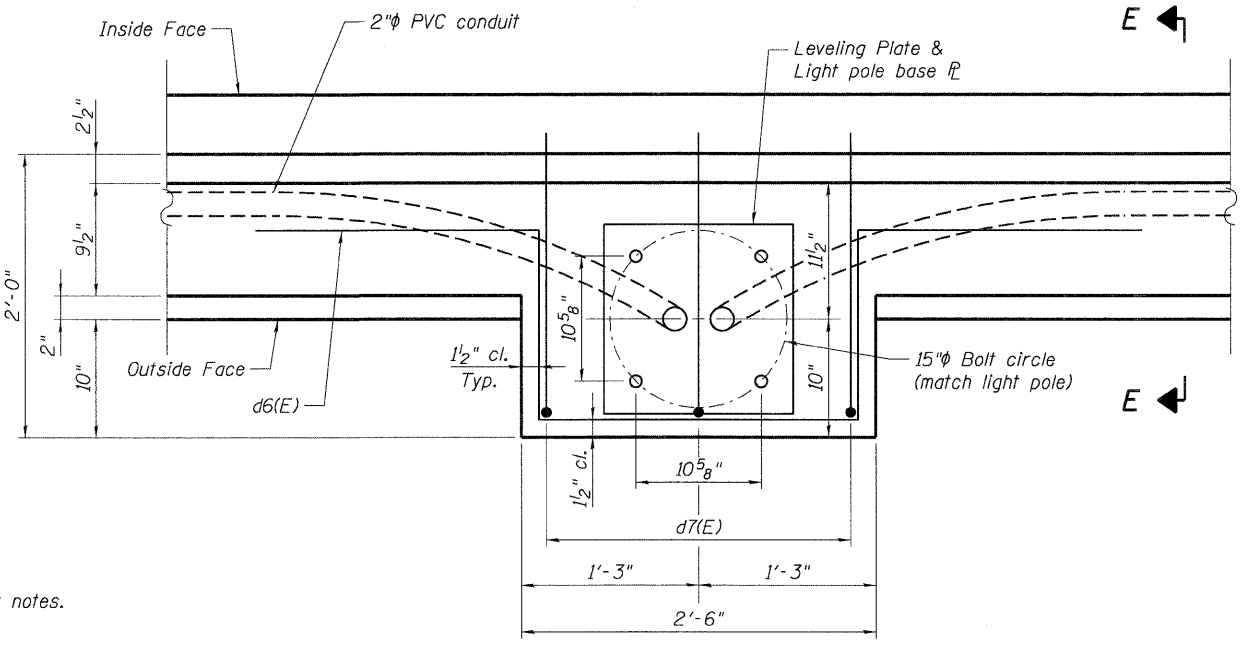


ADDITIONAL REINFORCEMENT AT SCUPPERS

Note: Cut longitudinal reinforcement to clear drainage scuppers.



SECTION AT NORTH PARAPET SCUPPERS



LIGHT PEDESTAL PLAN

Note: See Sht. S-17 for notes.

\0450077-6045-001-SUPERDETAIL.DGN, \VALLS\NIN\6045-001-BORDER.DGN, \0450077-6045-001-SUPERDETAIL.DGN, \BAJ\ZK\J, \F5-804\VAL\VAL\T.D, TRANS, 07\2202\21379-001\STRUCT\CAD\6045-001\0450077-SHEET, \0450077-6045-002-SUPERDETAIL-SHT.DGN

FILE NAME =	USER NAME = #USER#	DESIGNED - MDB	REVISED -	STATE OF ILLINOIS DEPARTMENT OF TRANSPORTATION US 20 OVER MCLEAN BOULEVARD	PARAPET SECTIONS AND DETAILS			F.A.P. RTE. 345	SECTION 8R-R	COUNTY KANE	TOTAL SHEETS 794	SHEET NO. 496
\$FILELS	PLOT SCALE = #SCALE#	DRAWN - MDB	REVISED -		SCALE:	SHEET NO. S-24	OF S-62	STATION 98+32.18	SN 045-0077		CONTRACT NO. 6045	
TENG TENG & ASSOCIATES, INC. ENGINEERS/ARCHITECTS/PLANNERS CHICAGO, ILLINOIS	CHECKED - PK	REVISED -	REVISED -		FED. ROAD DIST. NO. 7 ILLINOIS FED. AID PROJECT							
	PLOT DATE = #DATE#	DATE - 12/16/11	REVISED -									