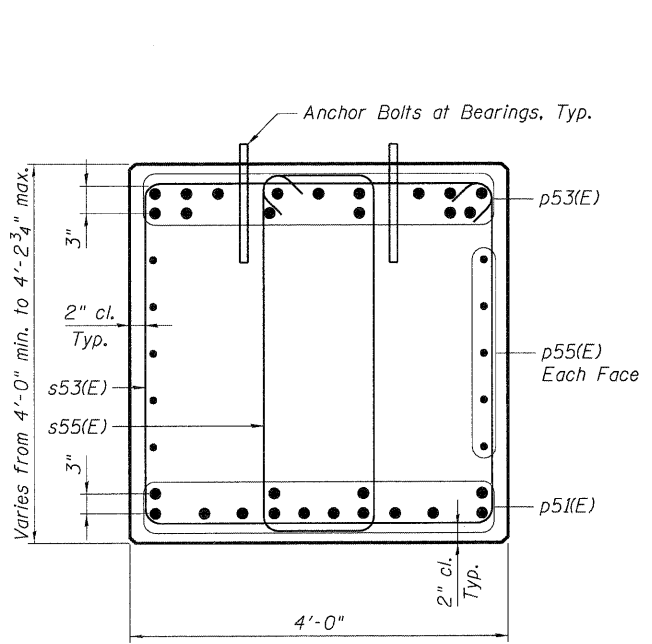
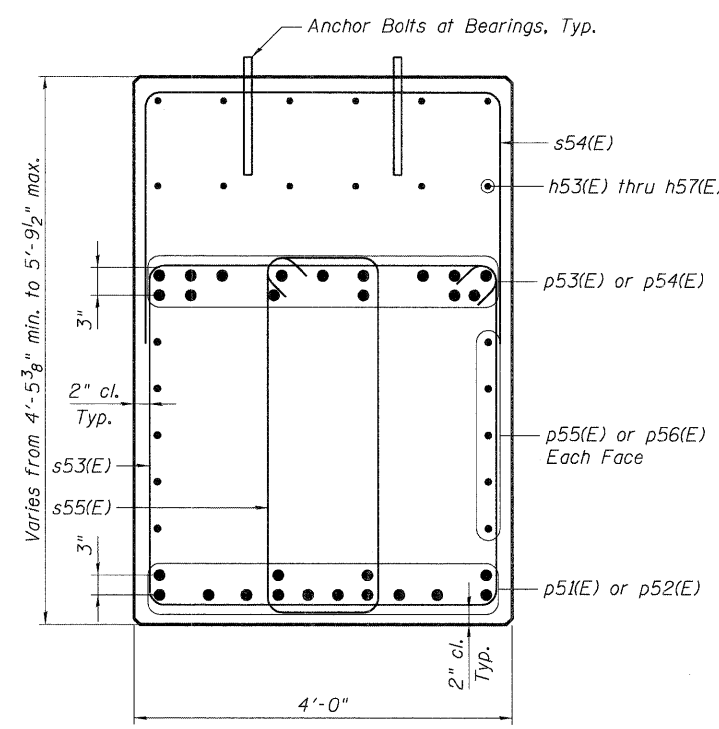


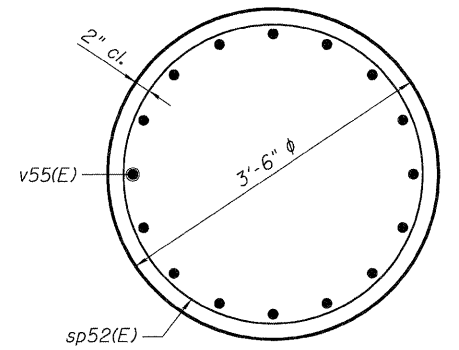
I:\50077-60H45-002-PIER.DGN, I:\50077-60H45-002-PIER.DGN, I:\50077-60H45-002-PIER.DGN, I:\50077-60H45-002-PIER.DGN, I:\50077-60H45-002-PIER.DGN, I:\50077-60H45-002-PIER.DGN, I:\50077-60H45-002-PIER.DGN, I:\50077-60H45-002-PIER.DGN, I:\50077-60H45-002-PIER.DGN, I:\50077-60H45-002-PIER.DGN
 12-12-2011, 10:48:48
 BAIZEKJ



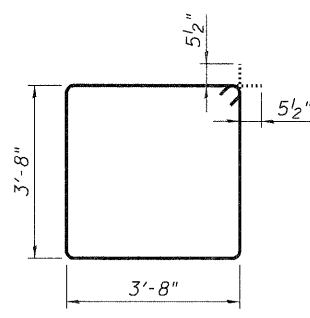
SECTION A-A



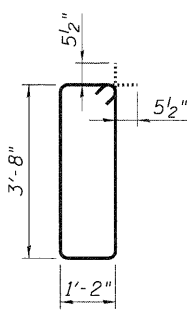
SECTION B-B



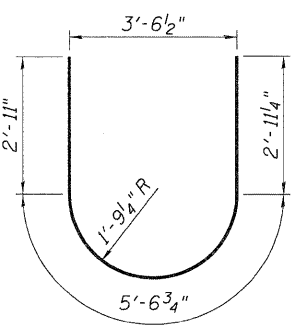
SECTION C-C



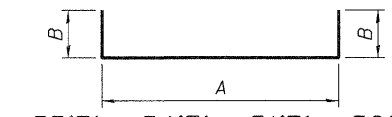
s53(E) BAR



s55(E) BAR

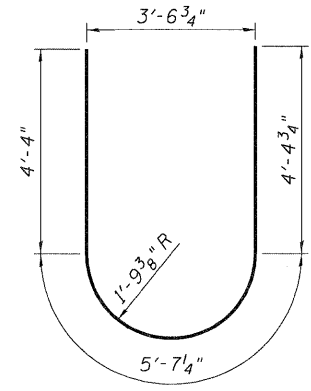


u51(E) BAR

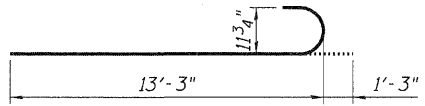


p53(E), p54(E), s51(E), s52(E), s54(E), 152(E), u53(E)

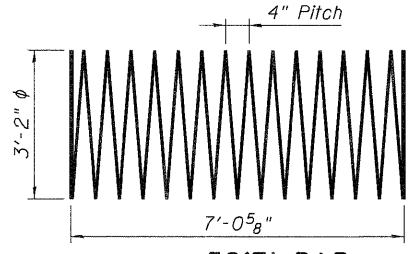
BAR	A	B
p53(E)	55'-6"	1'-10"
p54(E)	40'-6"	1'-10"
s51(E)	3'-8"	6'-4"
s52(E)	3'-8"	4'-3"
s54(E)	3'-8"	3'-0"
152(E)	11'-8"	1'-7"
u53(E)	3'-0"	3'-0"



u52(E) BAR



v55(E) BAR



sp52(E) BAR

BAR LIST

Bar	No.	Size	Length	Shape
h51(E)	14	#5	49'-11"	—
h52(E)	14	#5	39'-11"	—
h53(E)	6	#5	10'-5"	—
h54(E)	6	#5	32'-11"	—
h55(E)	6	#5	40'-7"	—
h56(E)	6	#5	19'-0"	—
h57(E)	6	#5	5'-2"	—
p51(E)	14	#10	55'-6"	—
p52(E)	14	#10	40'-6"	—
p53(E)	15	#10	59'-2"	—
p54(E)	15	#10	44'-2"	—
p55(E)	10	#6	55'-6"	—
p56(E)	10	#6	40'-6"	—
s51(E)	92	#6	16'-6"	—
s52(E)	92	#6	12'-2"	—
s53(E)	270	#5	15'-7"	—
s54(E)	87	#5	9'-8"	—
s55(E)	270	#5	10'-7"	—
* sp52(E)	7	#5	7'-0 5/8"	—
151(E)	98	#9	11'-8"	—
152(E)	100	#9	14'-10"	—
153(E)	4	#5	11'-8"	—
u51(E)	10	#5	11'-5"	—
u52(E)	16	#6	14'-4"	—
u53(E)	216	#5	9'-0"	—
v52(E)	14	#5	4'-3"	—
v53(E)	7	#5	3'-8"	—
v54(E)	7	#5	5'-5"	—
v55(E)	112	#9	14'-6"	—
w51(E)	32	#9	53'-9"	—
w52(E)	32	#9	43'-9"	—
w53(E)	4	#5	53'-9"	—
w54(E)	4	#5	43'-9"	—

* Length is height of spiral.

BILL OF MATERIAL

Item	Unit	Total
Structure Excavation	Cu. Yd.	242
Concrete Structures	Cu. Yd.	307.3
Reinforcement Bars, Epoxy Coated	Pound	57,950
Furnishing Steel Piles HP14x73	Foot	1,343
Driving Piles	Foot	1,343
Test Pile Steel HP14x73	Each	1
Pile Shoes	Each	80

- Notes:**
1. Work this sheet with Sht. S-51.
 2. Concrete Sealer shall be applied to all exposed surfaces of the pier, from top of footing to top of cap.
 3. For Bar Splicer quantity and details, see Sht. S-54.