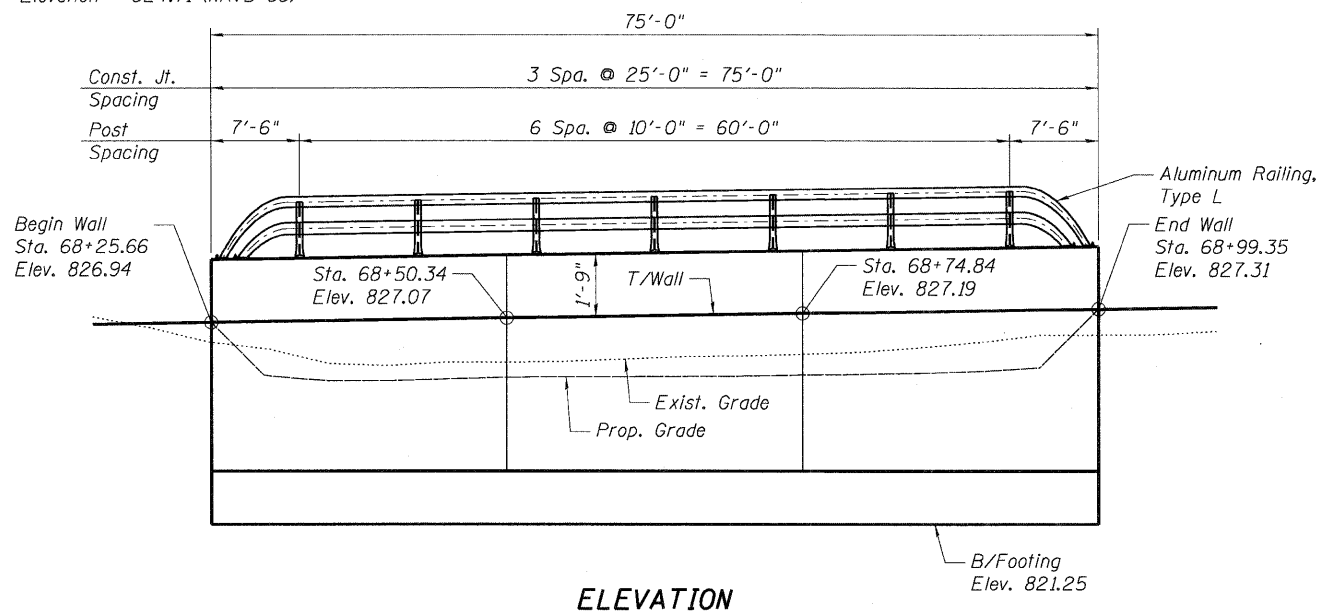


Bench Mark: Cross cut on concrete sidewalk on the north side of Fleetwood Drive and ±200' east of McLean Boulevard.
Elevation = 824.71 (NAVD 88)



ELEVATION

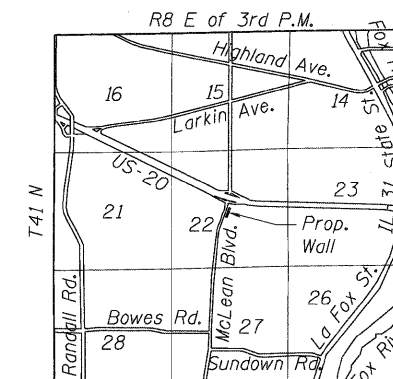
DESIGN SPECIFICATIONS

2002 AASHTO Standard Specifications for Highway Bridges, 17th Edition

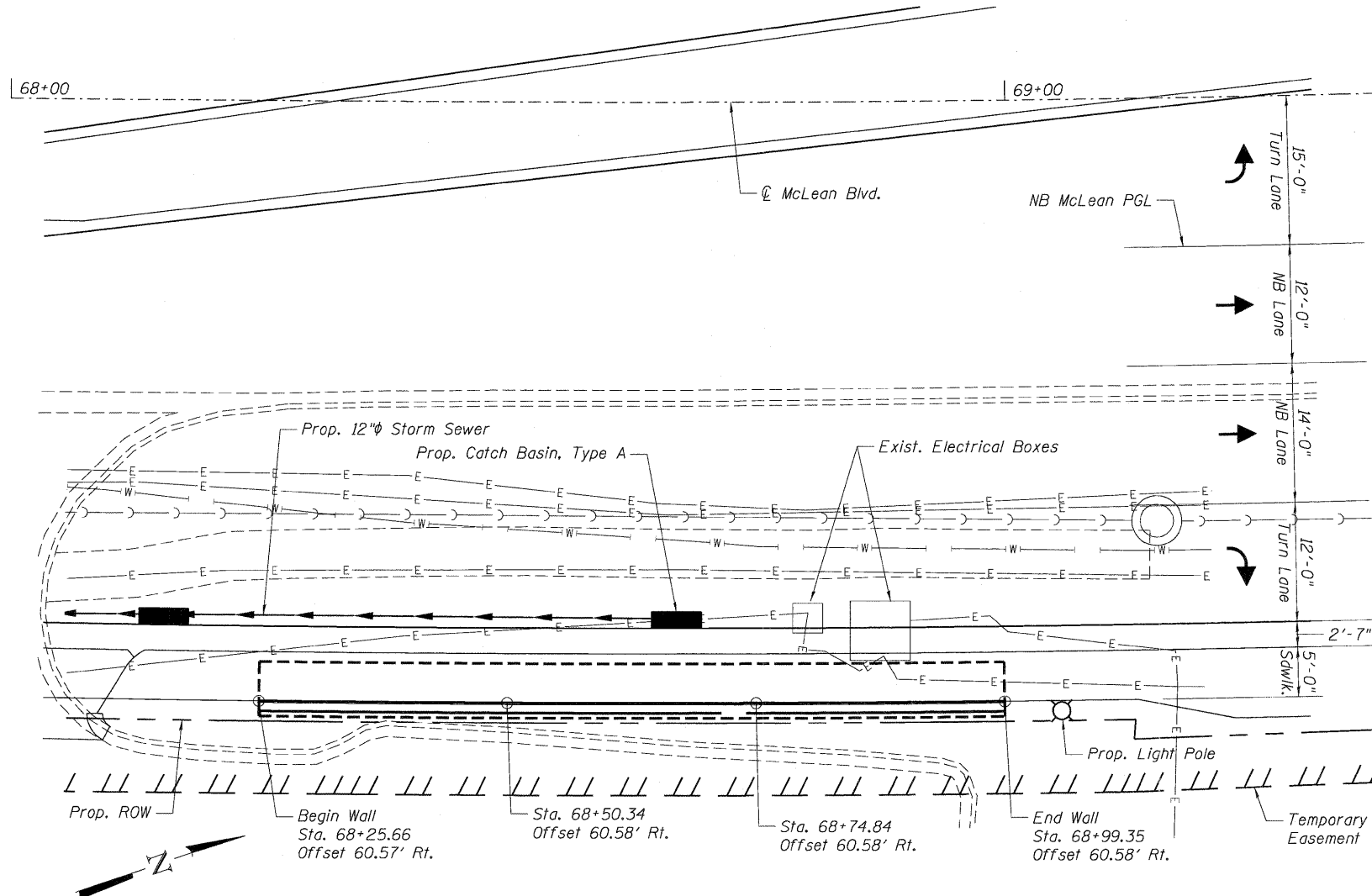
DESIGN STRESSES

FIELD UNITS

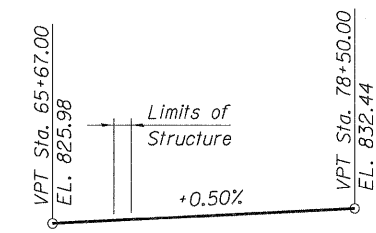
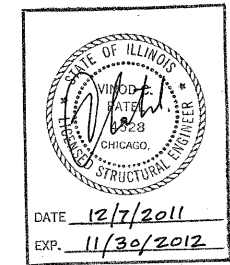
$f'_c = 3.5$ ksi
 $f_y = 60$ ksi (reinforcement)
Maximum Applied Soil Bearing Pressure = 1.7 ksf



LOCATION SKETCH



PLAN



**PROFILE GRADE
PGL MCLEAN BOULEVARD**

GENERAL NOTES

1. Reinforcement bars shall conform to the requirements of ASTM A706 Grade 60. See Special Provisions.
2. Reinforcement bars designated (E) shall be epoxy coated.
3. Stations and offsets given to the back face of wall.
4. Tie pipe underdrain into proposed catch basin.

Legend:

- W- Underground Water Line
- E- Underground Electric Line
- Prop. Storm Sewer

INDEX OF SHEETS

- W-1 General Plan and Elevation
- W-2 Wall Details and Bar List
- W-3 Aluminum Railing, Type L Details

TOTAL BILL OF MATERIAL

ITEM	UNIT	TOTAL
Structure Excavation	Cu Yd	117
Concrete Structures	Cu Yd	39.6
Protective Coat	Sq Yd	22
Reinforcement Bars, Epoxy Coated	Pound	4,580
Aluminum Railing, Type L	Foot	73
Geocomposite Wall Drain	Sq Yd	33
Porous Granular Embankment, Special	Cu Yd	44
Pipe Underdrains for Structures 4"	Foot	90

FILE NAME = \\NAS012-60H45-011-RET WALL.DGN, USER NAME = MDB, DESIGNED - MDB, REVISED - MDB, DRAWN - MDB, CHECKED - PK, DATE - 12/16/11, PLOT SCALE = 1/8"=1'-0", PLOT DATE = 12/16/11, TENG & ASSOCIATES, INC., ENGINEERS/ARCHITECTS/PLANNERS, CHICAGO, ILLINOIS