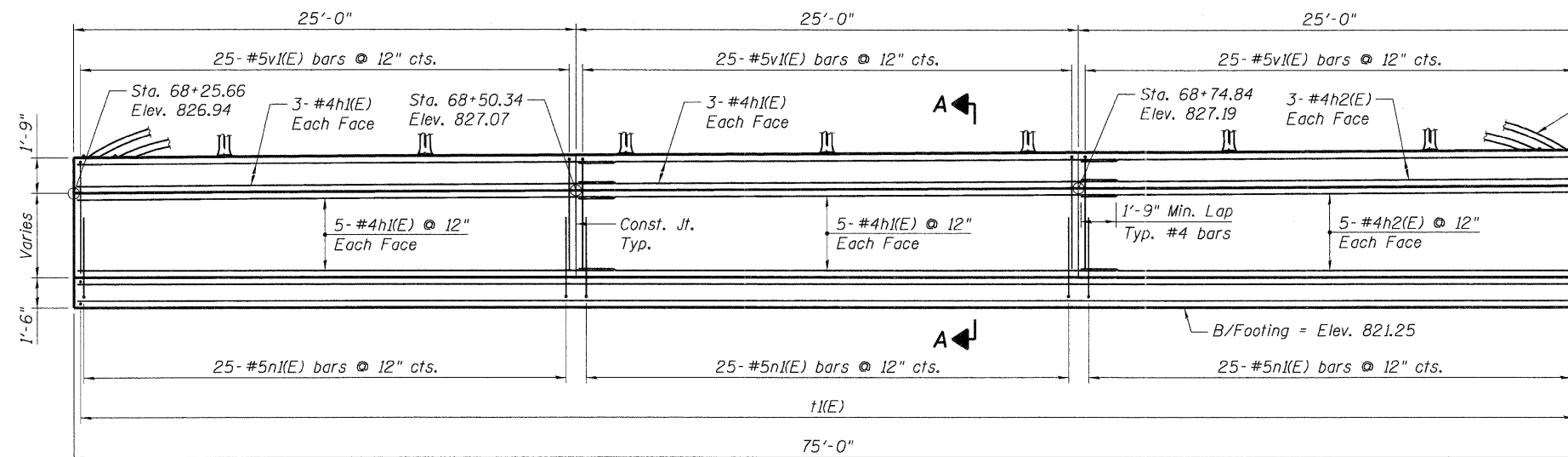
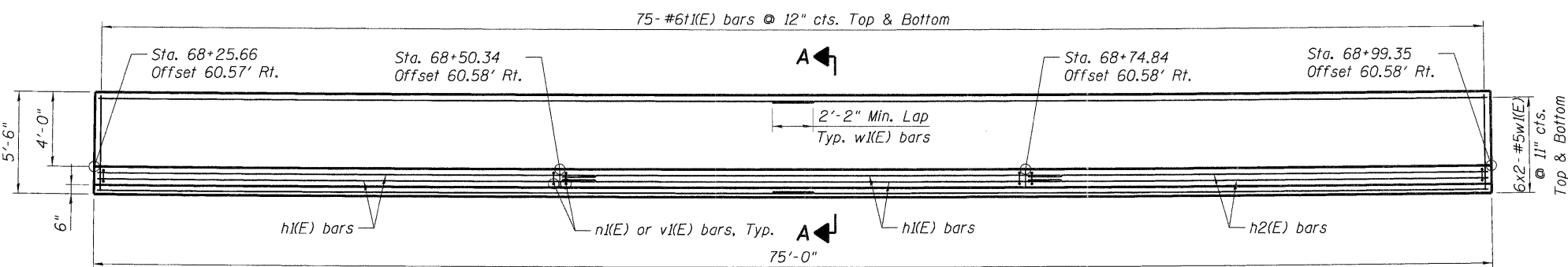
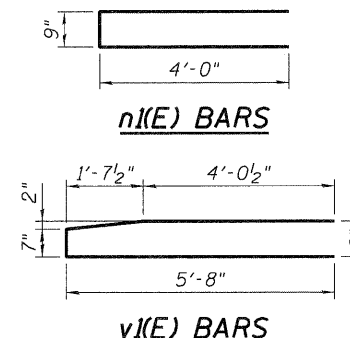


BAR LIST

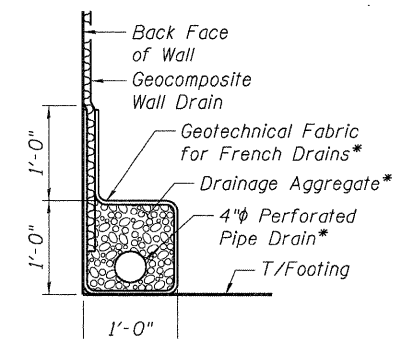
Bar	No.	Size	Length	Shape
h1(E)	32	#4	26'-9"	—
h2(E)	16	#4	24'-9"	—
n1(E)	75	#5	8'-9"	—
t1(E)	150	#6	5'-2"	—
v1(E)	75	#5	11'-11"	—
w1(E)	24	#5	38'-4"	—



WALL ELEVATION

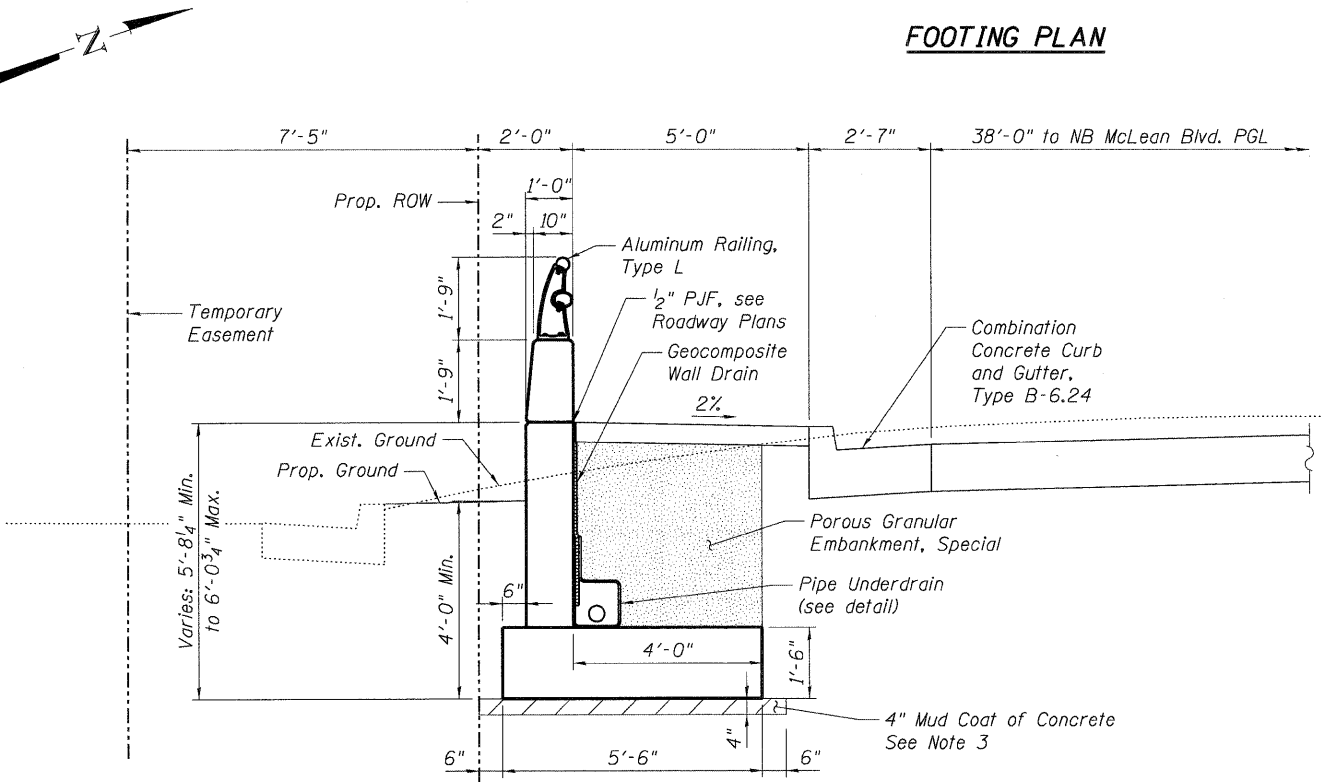


FOOTING PLAN

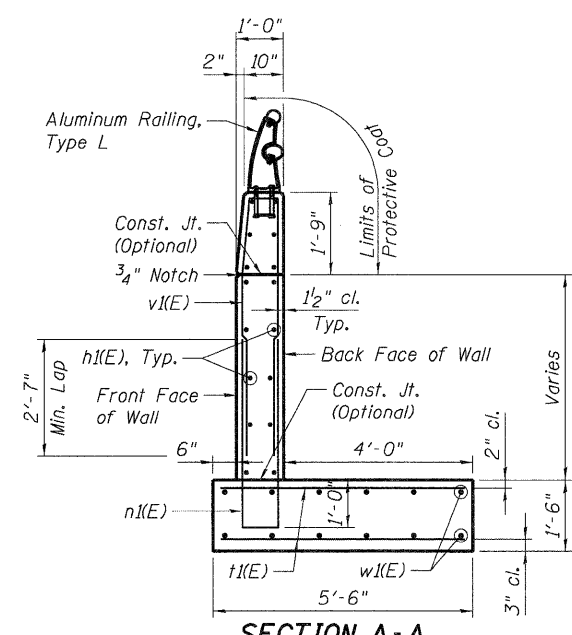


PIPE UNDERDRAIN DETAIL

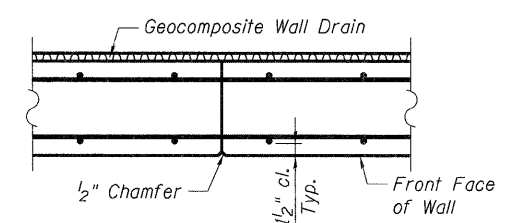
* Included in the cost of Pipe Underdrains for Structures.



SECTION A-A
(Showing Dimensions and Drainage Details)



SECTION A-A
(Showing Reinforcement)



CONSTRUCTION JOINT DETAIL

Notes:

1. Work this sheet with Shts. W-1 & W-3.
2. Bars indicated thus 7x2-#5 etc. indicates 7 lines of bars with 2 lengths per line.
3. The mud coat must be placed at the end of each work day or prior to adverse weather, whichever occurs first. The concrete shall be from an approved mix design (with a minimum compressive strength of 2,500 psi at 7 days), with a slump less than 6". Cost included in Concrete Structures.

FILE NAME = \\NAS012-60H45-012-RET WALL.DGN, USER = USER*, DESIGNED - MDB, REVISED - , DRAWN - MDB, REVISED - , CHECKED - PK, REVISED - , DATE - 12/16/11, REVISED - , PLOT SCALE = #SCALE#, PLOT DATE = #DATE#, STATE OF ILLINOIS DEPARTMENT OF TRANSPORTATION, US 20 OVER MCLEAN BOULEVARD, WALL DETAILS AND BAR LIST, F.A.P. RTE. 345, SECTION BR-R, COUNTY KANE, TOTAL SHEETS 794, SHEET NO. 536, SN 045-W012, CONTRACT NO. 60H45, SCALE: SHEET NO. W-2 OF W-3, STA. 68+25.66 TO STA. 68+99.35, FED. ROAD DIST. NO. 7 ILLINOIS FED. AID PROJECT