

STATE OF ILLINOIS  
DEPARTMENT OF TRANSPORTATION  
DIVISION OF HIGHWAYS

**PROPOSED HIGHWAY PLANS**

F.A.P. ROUTE 347: IL 38  
SECTION: LY (HB & VB)  
AT KAUTZ ROAD AND UNION PACIFIC RAILROAD  
PROJECT: ACF-0347(028)  
GRADE SEPARATION AND RECONSTRUCTION  
DUPAGE AND KANE COUNTIES  
C-91-869-09

FOR INDEX OF SHEETS, SEE SHEET NO. 2

STATION EQUATIONS:

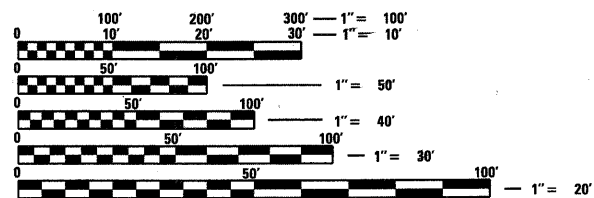
STA 109+06.70 @ IL RTE 38 =  
STA 1100+00.00, @ KAUTZ RD

STA 109+10.15 @ IL RTE 38 =  
STA 22+04.52 @ NORTH UP RR TRACK

DESIGN DESIGNATION

IL RTE 38 3200(30) OTHER PRINCIPAL ARTERIAL 6.03 (JPCP-20)  
KAUTZ RD 600(30) COLLECTOR STREET 0.81 (JPCP-20)

DESIGN SPEED: IL RTE 38 = 45 MPH  
KAUTZ RD = 45 MPH

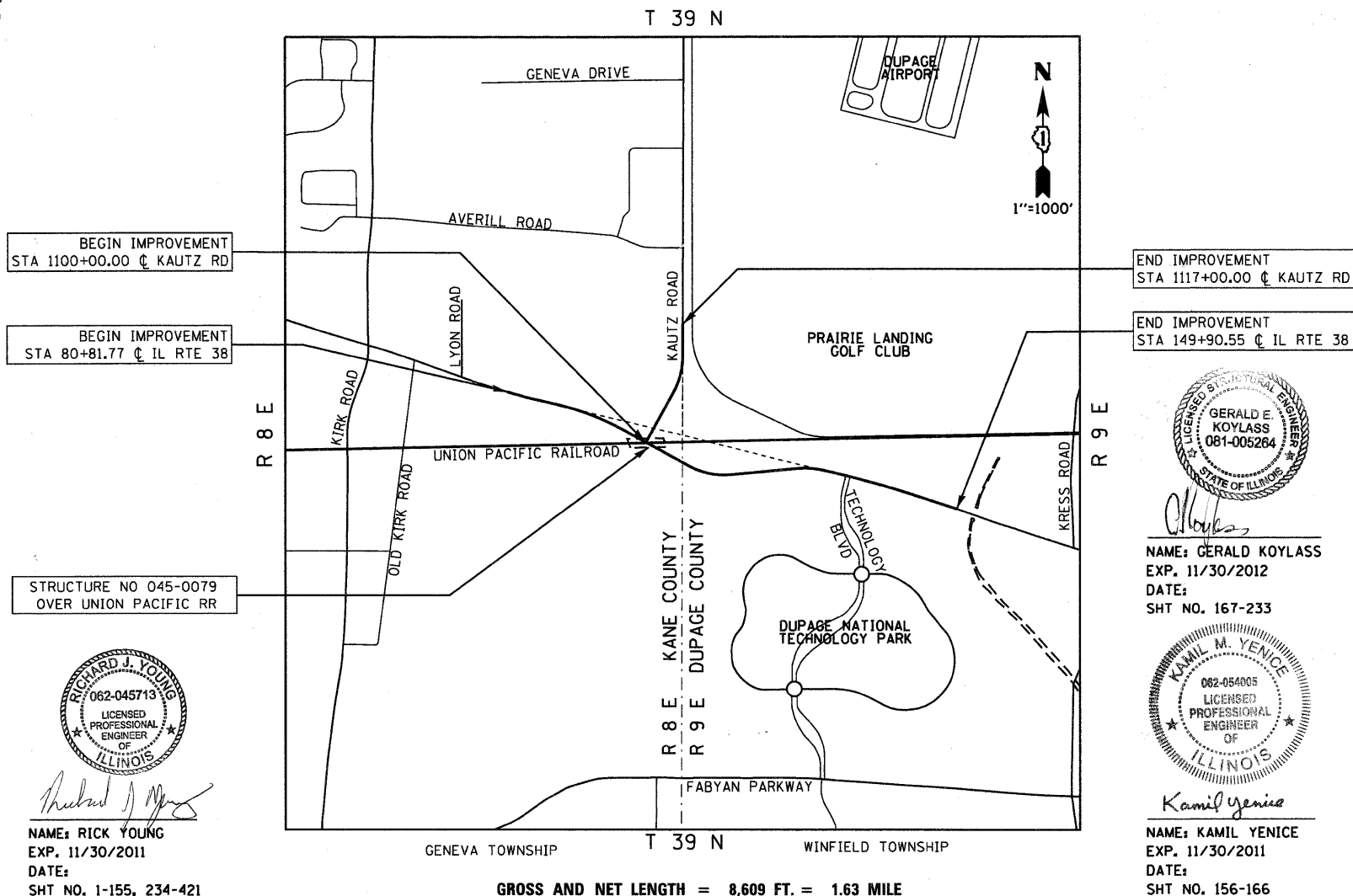


FULL SIZE PLANS HAVE BEEN PREPARED USING STANDARD ENGINEERING SCALES. REDUCED SIZED PLANS WILL NOT CONFORM TO STANDARD SCALES. IN MAKING MEASUREMENTS ON REDUCED PLANS, THE ABOVE SCALES MAY BE USED.

J.U.L.I.E.  
JOINT UTILITY LOCATION INFORMATION FOR EXCAVATION  
1-800-892-0123  
OR 811

PROJECT ENGINEER: CRAIG BAUER  
PROJECT MANAGER: LONG TRAN

CONTRACT NO. 60122



RICHARD J. YOUNG  
062-045713  
LICENSED PROFESSIONAL ENGINEER OF ILLINOIS

NAME: RICK YOUNG  
EXP. 11/30/2011  
DATE:  
SHT NO. 1-155, 234-421

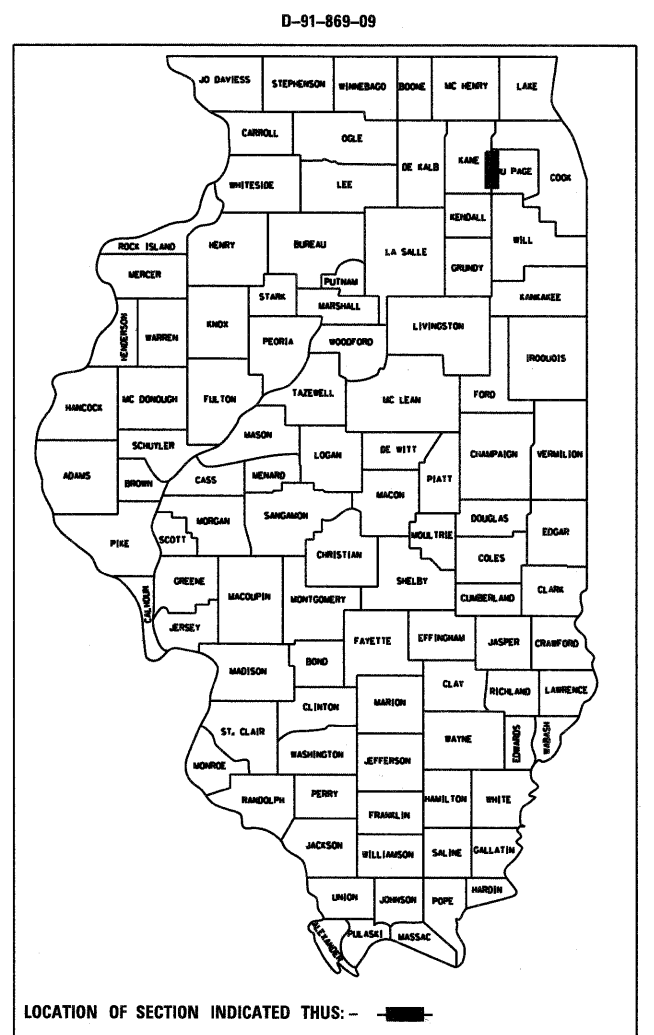
GERALD E. KOYLASS  
081-005264  
LICENSED PROFESSIONAL ENGINEER OF ILLINOIS

NAME: GERALD KOYLASS  
EXP. 11/30/2012  
DATE:  
SHT NO. 167-233

KAMIL M. YENICE  
062-054005  
LICENSED PROFESSIONAL ENGINEER OF ILLINOIS

NAME: KAMIL YENICE  
EXP. 11/30/2011  
DATE:  
SHT NO. 156-166

F.A.P. RTE.	SECTION	COUNTY	TOTAL SHEETS	SHEET NO.
347	LY (HB & VB)	DUPAGE/KANE	421	1
FED. ROAD DIST. NO. 1		ILLINOIS	CONTRACT NO. 60122	



STATE OF ILLINOIS  
DEPARTMENT OF TRANSPORTATION  
DIVISION OF HIGHWAYS

SUBMITTED OCTOBER 14, 2011

*Diana M. O'Keefe*  
DEPUTY DIRECTOR OF HIGHWAYS, REGION ENGINEER

March 23, 2012  
*John D. Baranzelli, P.E.*  
acting ENGINEER OF DESIGN AND ENVIRONMENT

March 23, 2012  
*William R. Flecker*  
acting DIRECTOR OF HIGHWAYS, CHIEF ENGINEER

PRINTED BY THE AUTHORITY  
OF THE STATE OF ILLINOIS

McDonough Associates Inc.  
Engineers/Architects  
130 East Randolph Street - Suite 1000  
Chicago, Illinois 60601 Phone: (312) 946-8600