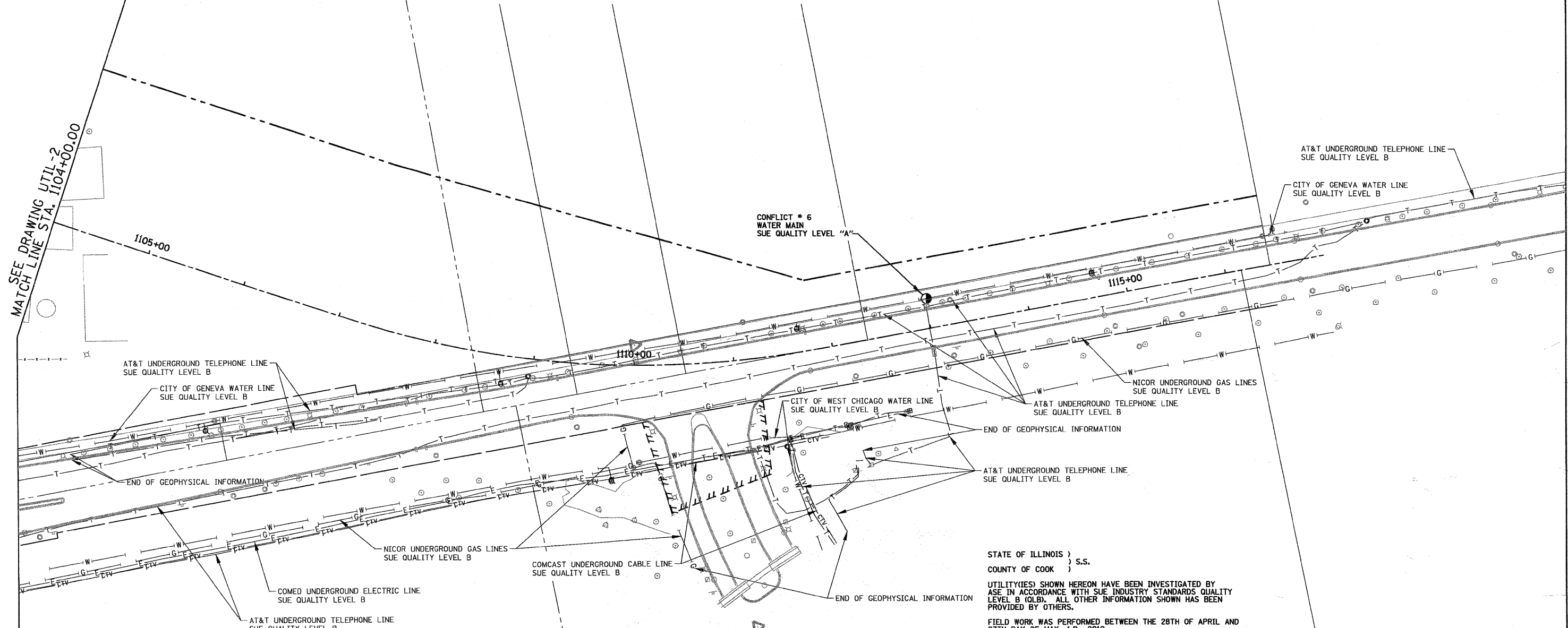




VERIFIED UTILITY INFORMATION - SUE QUALITY LEVEL A

CONFLICT NO.	SIZE / TYPE	NORTHING	EASTING	STATION	OFFSET	TOP OF UTILITY	EXISTING CUT	REFERENCE GROUND ELEV.	COMMENTS
6	WATER MAIN	1901027.29	1003516.97	1113+00.94	30.02' LT.	759.26	8.77	768.03	CITY OF GENEVA

SEE DRAWING UTIL-2  
MATCH LINE STA. 1104+00.00



AT&T UNDERGROUND TELEPHONE LINE  
SUE QUALITY LEVEL B

CITY OF GENEVA WATER LINE  
SUE QUALITY LEVEL B

END OF GEOPHYSICAL INFORMATION

NICOR UNDERGROUND GAS LINES  
SUE QUALITY LEVEL B

COMED UNDERGROUND ELECTRIC LINE  
SUE QUALITY LEVEL B

AT&T UNDERGROUND TELEPHONE LINE  
SUE QUALITY LEVEL B

COMCAST UNDERGROUND CABLE LINE  
SUE QUALITY LEVEL B

CONFLICT # 6  
WATER MAIN  
SUE QUALITY LEVEL "A"

CITY OF WEST CHICAGO WATER LINE  
SUE QUALITY LEVEL B

AT&T UNDERGROUND TELEPHONE LINE  
SUE QUALITY LEVEL B

NICOR UNDERGROUND GAS LINES  
SUE QUALITY LEVEL B

STATE OF ILLINOIS )  
COUNTY OF COOK ) S.S.

UTILITY(IES) SHOWN HEREON HAVE BEEN INVESTIGATED BY  
ASE IN ACCORDANCE WITH SUE INDUSTRY STANDARDS QUALITY  
LEVEL B (QLB). ALL OTHER INFORMATION SHOWN HAS BEEN  
PROVIDED BY OTHERS.

FIELD WORK WAS PERFORMED BETWEEN THE 28TH OF APRIL AND  
27TH DAY OF MAY, A.D., 2010.

IN WITNESS WHEREOF, I HAVE HEREUNTO SET MY HAND AND SEAL  
THIS 1ST DAY OF JUNE A.D., 2010. CHICAGO, IL.



*Steven M. Rienks*  
STEVEN M. RIENKS - ILLINOIS PROFESSIONAL  
ENGINEER NUMBER 62-044619  
MY LICENSE EXPIRES 11/30/2011

LEGEND

- CONFLICT # (SUE QUALITY LEVEL A)
- T — EXISTING UNDERGROUND TELEPHONE
- W — EXISTING UNDERGROUND WATER
- E — EXISTING UNDERGROUND ELECTRIC
- G — EXISTING UNDERGROUND GAS
- CTV — EXISTING UNDERGROUND CABLE TV

NOTES:

1. HORIZONTAL CONTROL, VERTICAL CONTROL, CENTERLINE ALIGNMENT, TOPOGRAPHIC FEATURES, AND ALL UTILITY LINE WORK (EXCEPTING SUE QUALITY LEVEL A LOCATIONS) WERE SUPPLIED BY ILLINOIS DEPARTMENT OF TRANSPORTATION, CONTRACT NUMBER 60D12, DATED DECEMBER 19, 2008.
2. PREVIOUS QLA AND QLB DESIGNATION PERFORMED FOR WORK ORDERS 338 AND 345 ARE SHOWN HEREON.

**AMERICAN**  
SURVEYING & ENGINEERING, P.C.  
SURVEYORS - ENGINEERS  
GEODESISTS - MAPPING SCIENTISTS  
Chicago 312-277-2000 / Fax 312-277-2002  
Illinois 815-288-6231 / Fax 815-288-6277  
Illinois 603-897-4105 / Fax 630-897-4121  
Illinois Professional Design Firm No. 184-003192

FILE NAME =  
D:\68122-SHT-SUE05.dgn

USER NAME = #USER#	DESIGNED - ---	REVISED -
DRAWN - ---	REVISOR -	REVISION -
CHECKED - ---	DATE -	REVISED -
DATE = 6/1/2010		

STATE OF ILLINOIS  
DEPARTMENT OF TRANSPORTATION

SUE INVESTIGATION OF  
UNDERGROUND UTILITIES

SCALE: 1"=50' SHEET NO. 5 OF 5 SHEETS STA. 1104+00 TO STA. END

F.A. RTE.	SECTION	COUNTY	TOTAL SHEETS	SHEET NO.
			421	94
CONTRACT NO.				
ILLINOIS FED. AID PROJECT				

