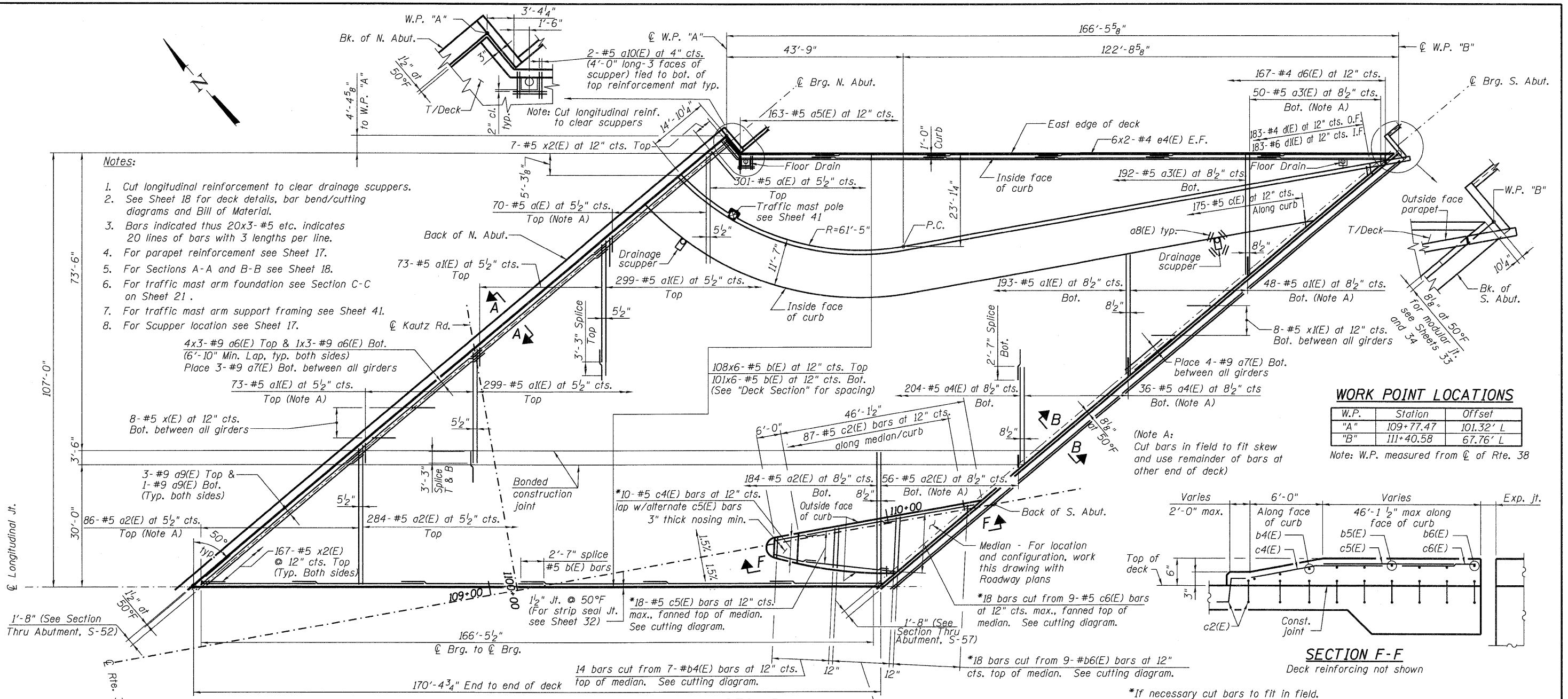


Notes:

1. Cut longitudinal reinforcement to clear drainage scuppers.
2. See Sheet 18 for deck details, bar bend/cutting diagrams and Bill of Material.
3. Bars indicated thus 20x3-#5 etc. indicates 20 lines of bars with 3 lengths per line.
4. For parapet reinforcement see Sheet 17.
5. For Sections A-A and B-B see Sheet 18.
6. For traffic mast arm foundation see Section C-C on Sheet 21.
7. For traffic mast arm support framing see Sheet 41.
8. For Scupper location see Sheet 17.

4x3-#9 a6(E) Top & 1x3-#9 a6(E) Bot.
(6'-10" Min. Lap, typ. both sides)
Place 3-#9 a7(E) Bot. between all girders



DECK PLAN

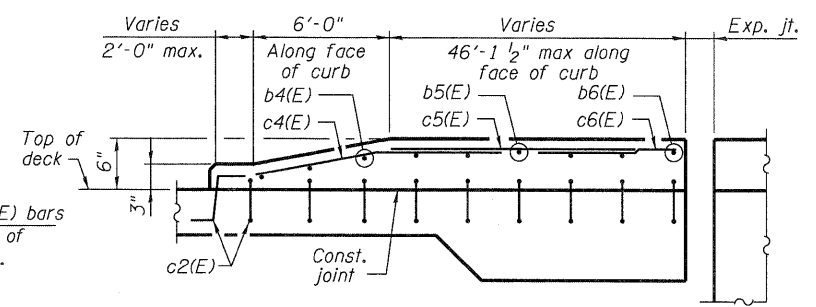
107'-0" measured perp. to Long. Jt.

WORK POINT LOCATIONS

W.P.	Station	Offset
"A"	109+77.47	101.32' L
"B"	111+40.58	67.76' L

Note: W.P. measured from ϕ of Rte. 38

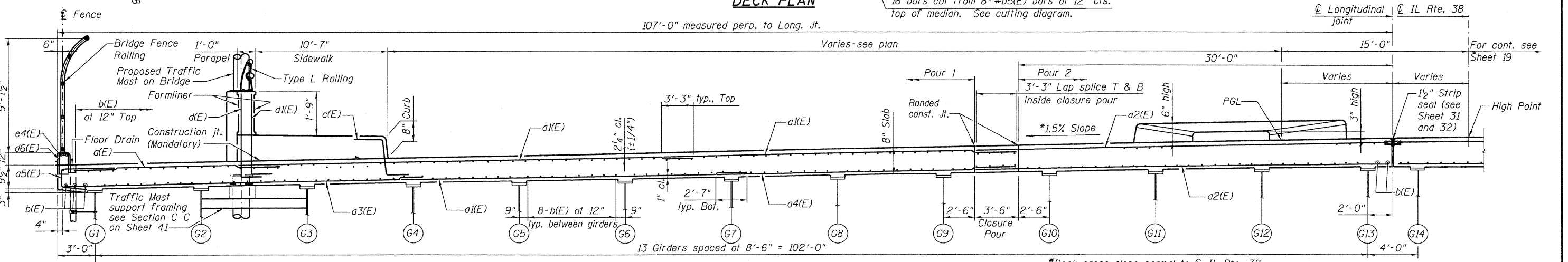
(Note A: Cut bars in field to fit skew and use remainder of bars at other end of deck)



SECTION F-F

Deck reinforcing not shown

*If necessary cut bars to fit in field.



DECK CROSS SECTION

(Looking Upstation - at Right Ls to ϕ Long. jt.)

*Deck cross slope normal to ϕ Il. Rte. 38

McDonough Associates Inc. Engineers / Architects 130 East Randolph Street Chicago, Illinois 60601

FILE NAME = 8458079-60122-016-WB_Deck_Det.dgn	USER NAME = jehrhart	DESIGNED - KJH	REVISD -	STATE OF ILLINOIS DEPARTMENT OF TRANSPORTATION	WESTBOUND DECK PLAN AND CROSS SECTION STRUCTURE NO. 045-0079	F.A.P. RTE. 347	SECTION LY (HB & VB)	COUNTY DUPAGE/KANE	TOTAL SHEETS 421	SHEET NO. 182	
PLOT SCALE = 1:12.5	DRAWN - JDK	REVISD -	SHEET NO. 16 OF 67 SHEETS			CONTRACT NO. 60122					
PLOT DATE = 3/28/2012	CHECKED - PMH	REVISD -	ILLINOIS FED. AID PROJECT								