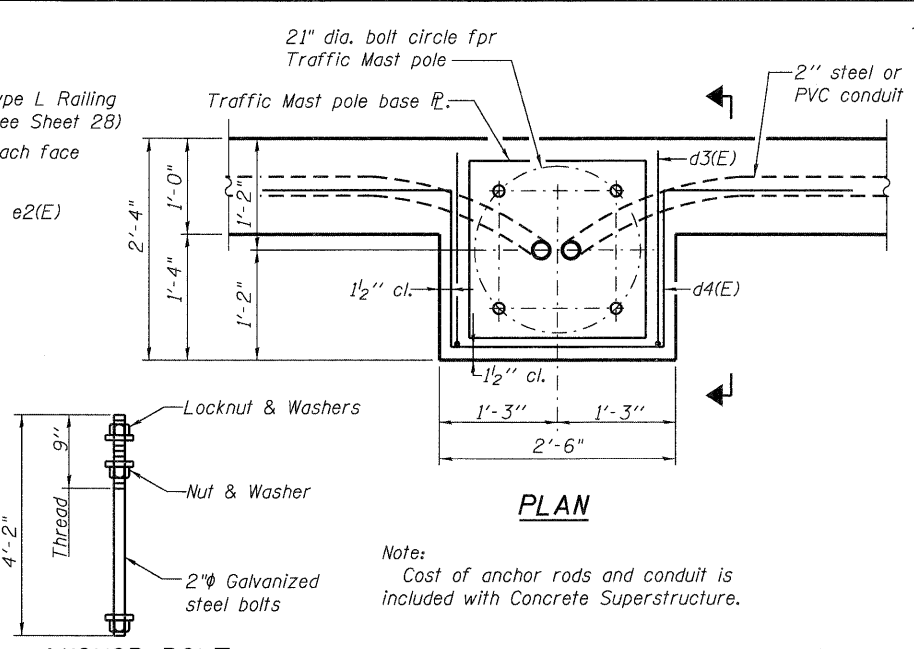
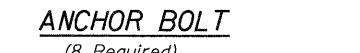


SECTION THRU PARAPET

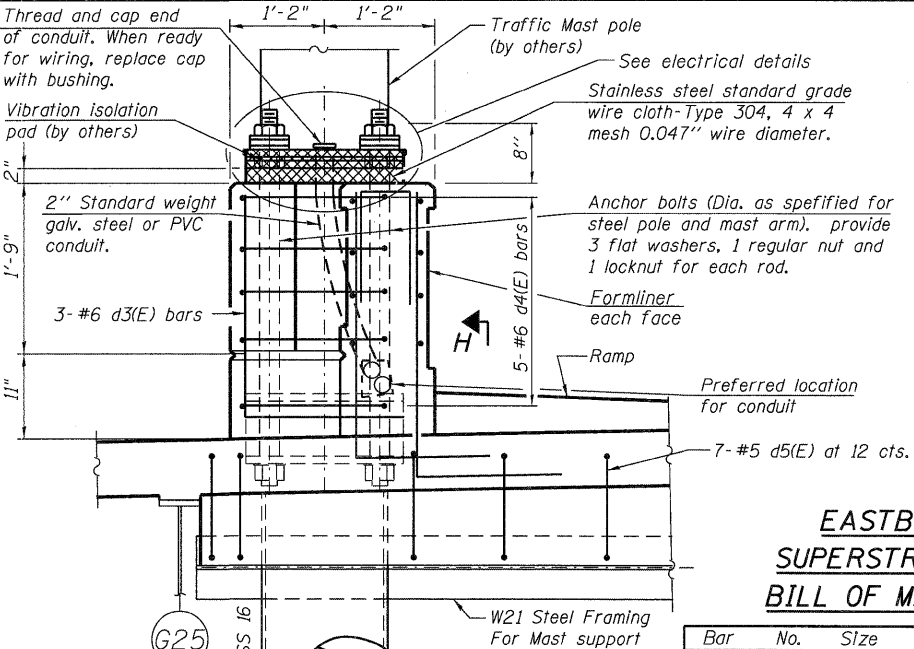


PLAN



ANCHOR BOLT

Note:
Cost of anchor rods and conduit is included with Concrete Superstructure.

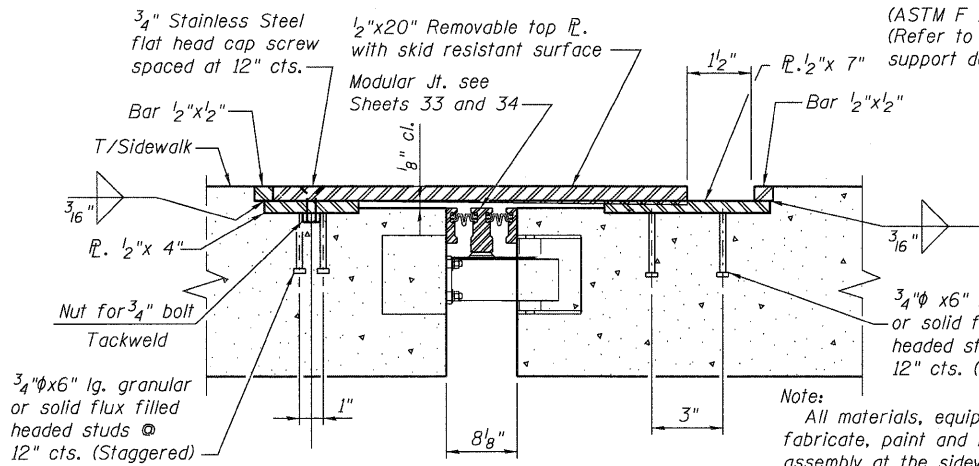


SECTION C-C

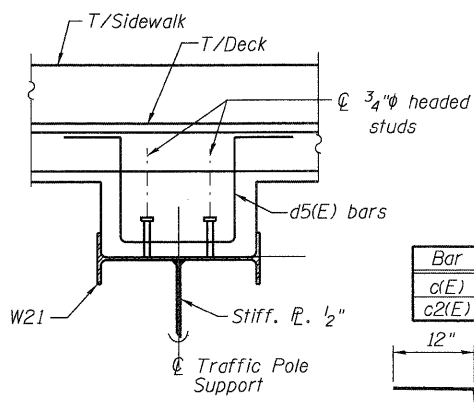
EASTBOUND SUPERSTRUCTURE BILL OF MATERIAL

Bar	No.	Size	Length	Shape
a(E)	371	#5	27'-3"	—
a1(E)	985	#5	28'-5"	—
a2(E)	610	#5	33'-2"	—
a3(E)	242	#5	29'-8"	—
a4(E)	240	#5	24'-6"	—
a5(E)	164	#5	6'-8"	—
a6(E)	30	#9	49'-0"	—
a7(E)	84	#9	15'-5"	—
a8(E)	32	#5	1'-6"	—
a9(E)	10	#9	51'-8"	—
a10(E)	16	#5	4'-0"	—
b(E)	1,254	#5	31'-2"	—
b1(E)	60	#5	38'-6"	—
b2(E)	6	#5	10'-4"	—
b3(E)	7	#5	14'-7"	—
c(E)	130	#5	2'-4"	—
c1(E)	178	#5	11'-2"	—
c2(E)	47	#5	2'-1"	—
c3(E)	10	#5	29'-6"	—
c4(E)	10	#5	8'-7"	—
d(E)	178	#4	3'-11"	—
d1(E)	178	#6	3'-11"	—
d2(E)	46	#4	2'-0"	—
d3(E)	3	#6	4'-6"	—
d4(E)	5	#6	9'-7"	—
d5(E)	7	#5	7'-8"	—
d6(E)	168	#4	4'-5"	—
e2(E)	6	#4	16'-0"	—
e3(E)	6	#4	16'-8"	—
e4(E)	54	#4	15'-8"	—
e5(E)	12	#4	30'-0"	—
x(E)	96	#5	6'-5"	—
x1(E)	96	#5	6'-9"	—
x2(E)	340	#5	4'-1"	—
Reinforcement Bars, Epoxy Coated		Pound	139,030	
Concrete Superstructure		Cu. Yds.	587.9	

Bars indicated thus 1 x 2 - #8 etc. indicates 1 line of bars with 2 lengths per line.



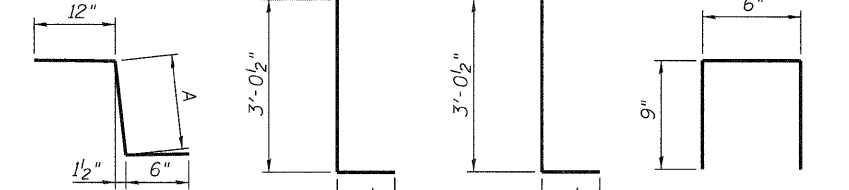
SLIDING PLATE DETAIL AT SIDEWALK



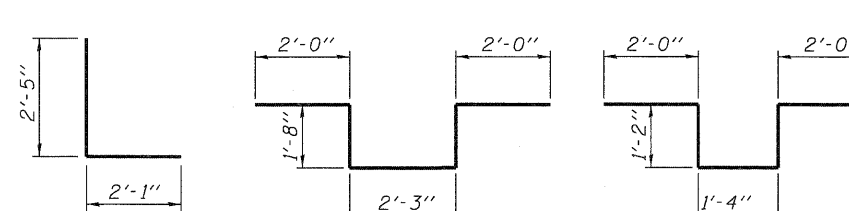
SECTION H-H

Bar	A
c(E)	10"
c2(E)	7"

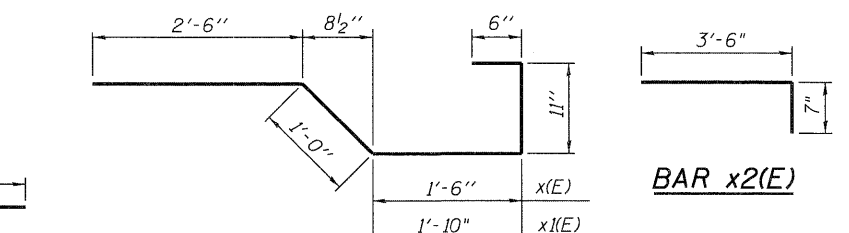
BAR a5(E) BAR a7(E)



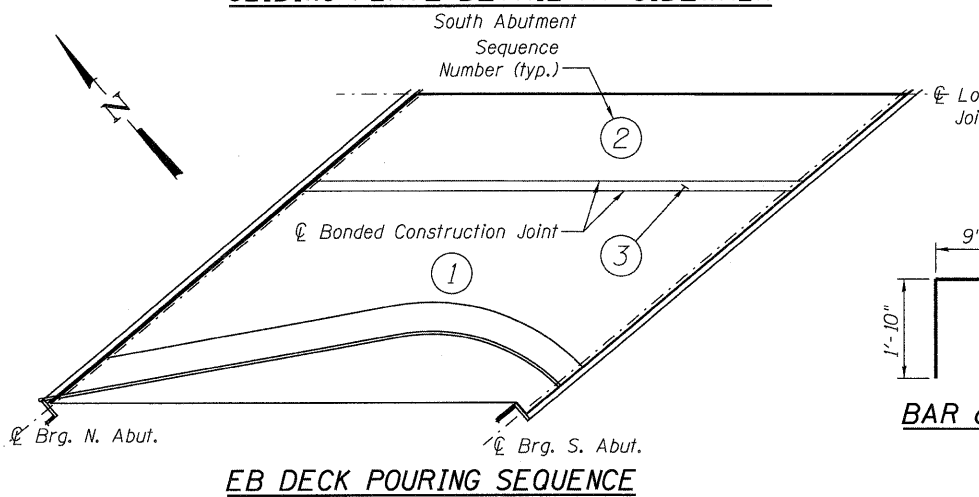
BAR c(E) & c2(E) BAR d(E) BAR d1(E) BAR d2(E)



BAR d3(E) BAR d4(E) BAR d5(E)



BARS x(E) & x1(E)



EB DECK POURING SEQUENCE

When the deck pour is stopped for the day at one or more of the bonded construction joints in the deck pouring sequence as shown, the next pour shall not be made until both of the following are met:
 1. At least 72 hours shall have elapsed from the end of the previous pour.
 2. The concrete strength shall have attained a minimum flexural strength of 650 psi or a minimum compressive strength of 3500 psi.

McDonough Associates Inc.
Engineers / Architects
130 East Randolph Street, Chicago, Illinois 60601