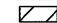
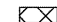
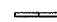


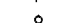

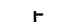

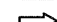
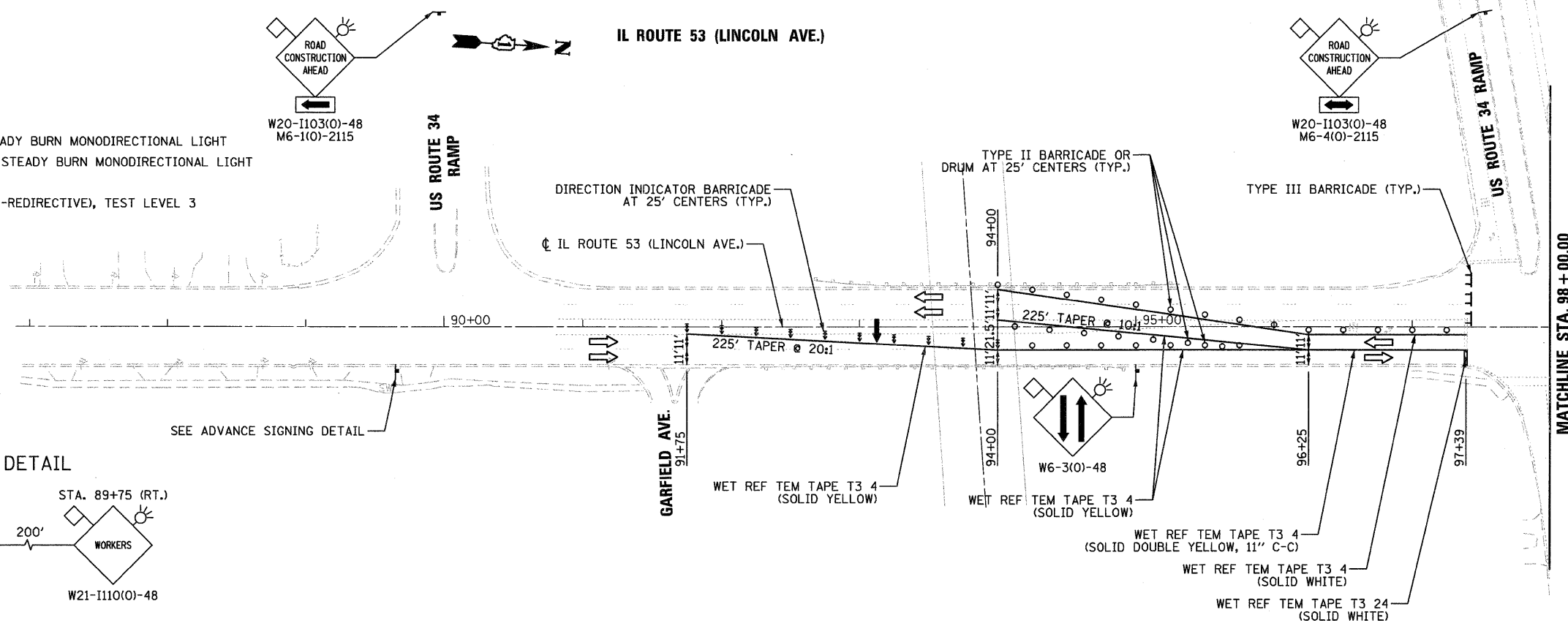
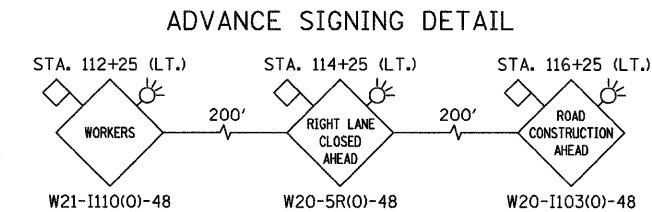
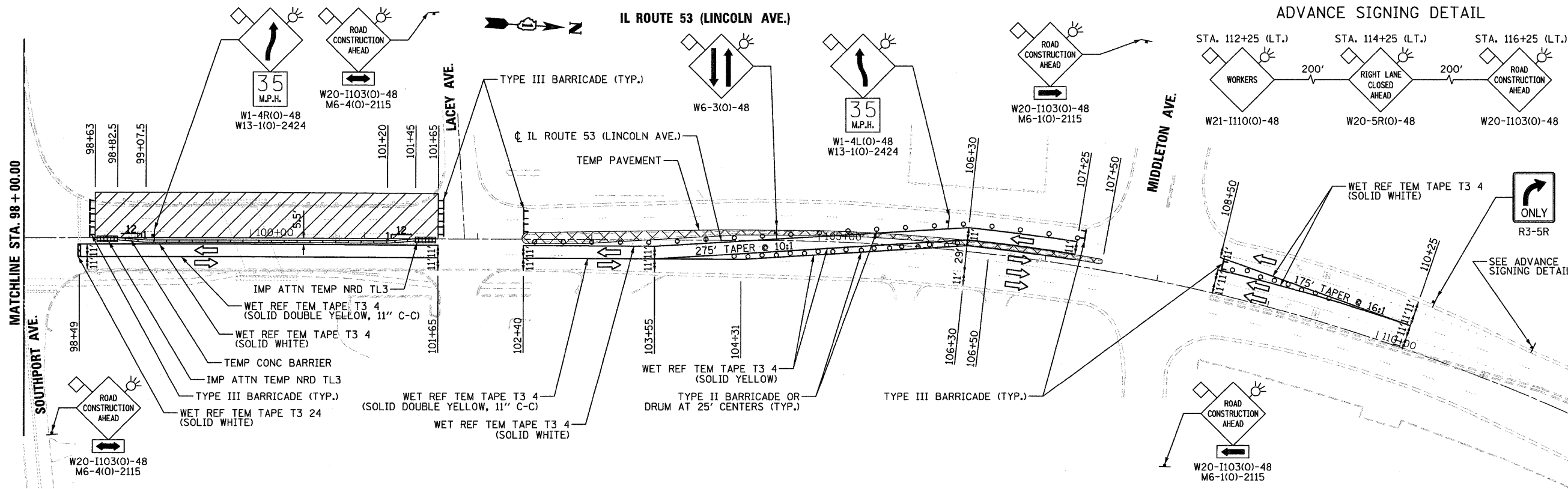
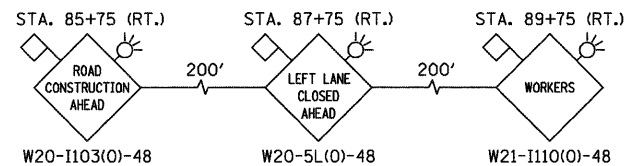


LEGEND:

-  WORK AREA
-  TEMPORARY PAVEMENT
-  TEMPORARY CONCRETE BARRIER
-  ARROW BOARD
-  SIGN
-  TYPE II BARRICADE OR DRUM WITH STEADY BURN MONODIRECTIONAL LIGHT
-  DIRECTION INDICATOR BARRICADE WITH STEADY BURN MONODIRECTIONAL LIGHT
-  TYPE III BARRICADE
-  IMPACT ATTENUATORS, TEMPORARY (NON-REDIRECTIVE), TEST LEVEL 3
-  DIRECTION OF TRAFFIC



ADVANCE SIGNING DETAIL



FILE NAME = ...D168M83-sht-staging1_01.dgn



DESIGNED - ADW	REVISED -
DRAWN - GEW	REVISED -
CHECKED - RJD	REVISED -
DATE - 10/4/2011	REVISED -

**STATE OF ILLINOIS
DEPARTMENT OF TRANSPORTATION**

**IL ROUTE 53 OVER ST JOSEPH'S CREEK
MAINTENANCE OF TRAFFIC PLAN
STAGE 1**
SCALE: 1" = 50' SHEET NO. 3 OF 4 SHEETS STA. 91+75 TO STA. 110+25

F.A.P. RTE.	SECTION	COUNTY	TOTAL SHEETS	SHEET NO.
870	534R-B	DuPAGE	51	12
				CONTRACT NO. 60M83
ILLINOIS FED. AID PROJECT				