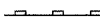


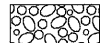


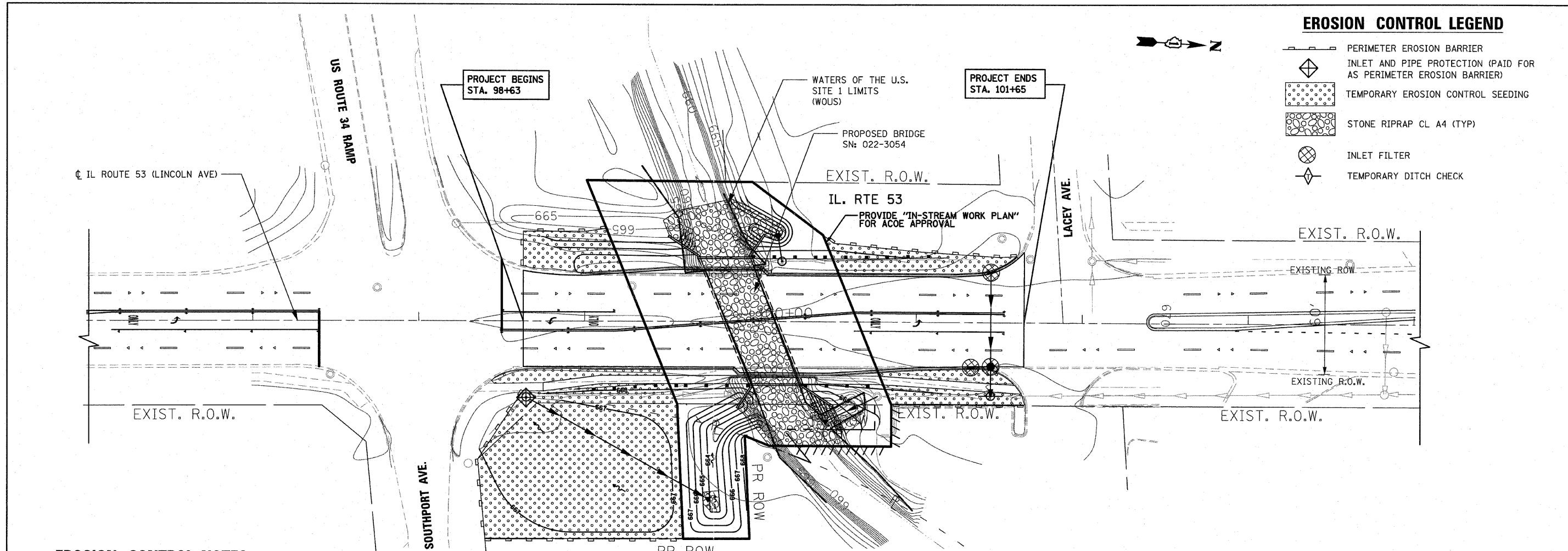



EROSION CONTROL LEGEND

-  PERIMETER EROSION BARRIER
-  INLET AND PIPE PROTECTION (PAID FOR AS PERIMETER EROSION BARRIER)
-  TEMPORARY EROSION CONTROL SEEDING
-  STONE RIPRAP CL A4 (TYP)
-  INLET FILTER
-  TEMPORARY DITCH CHECK



EROSION CONTROL NOTES

1. THE EROSION CONTROL MEASURES INDICATED ON THE PLANS ARE THE MINIMUM REQUIREMENTS. ADDITIONAL MEASURES MAY BE REQUIRED, AS DIRECTED BY THE ENGINEER.
2. THE CONTRACTOR SHALL TAKE ALL PRECAUTIONS TO PREVENT POLLUTION OF STORM WATER AND SHALL FOLLOW IEPA & IDOT CONSTRUCTION MEMORANDUM NO. 02-60.
3. ALL VEGETATIVE AND STRUCTURAL EROSION CONTROL PRACTICES SHALL BE CONSTRUCTED AND MAINTAINED IN ACCORDANCE WITH THE MINIMUM STANDARDS AND SPECIFICATIONS OF THE "ILLINOIS PROCEDURES AND STANDARDS FOR URBAN SOIL EROSION AND SEDIMENTATION CONTROL" AND THE "STANDARDS AND SPECIFICATIONS FOR SOIL EROSION AND SEDIMENT CONTROL" OF THE ILLINOIS ENVIRONMENTAL PROTECTION AGENCY.
4. SOIL DISTURBANCE SHALL BE CONDUCTED IN SUCH A MANNER AS TO MINIMIZE EROSION. SOIL STABILIZATION MEASURES SHALL CONSIDER THE TIME OF YEAR, SITE CONDITIONS AND THE USE OF TEMPORARY OR PERMANENT MEASURES.
5. THE MAINTENANCE AND REPAIR OR REPLACEMENT OF EROSION CONTROL ITEMS, WHEN DIRECTED BY THE ENGINEER, WILL NOT BE PAID FOR SEPARATELY, BUT SHALL BE INCLUDED IN THE COST OF THE ASSOCIATED PAY ITEMS.
6. ALL STORM SEWER FACILITIES THAT ARE OR WILL BE FUNCTIONING DURING CONSTRUCTION SHALL BE PROTECTED, FILTERED OR OTHERWISE TREATED TO REMOVE SEDIMENT. MUD AND SEDIMENT DEPOSITS SHALL BE REMOVED FROM THE ROADWAY AT THE END OF EACH WORK DAY BY SHOVELING AND/OR SWEEPING.
7. INLET FILTERS SHALL BE PLACED ON ALL CATCH BASINS, INLETS, AND MANHOLES WITH OPEN GRATES.
8. THE CONTRACTOR SHALL APPLY TEMPORARY EROSION CONTROL SEEDING TO ALL ERODIBLE BARE EARTH AREAS EVERY 7 DAYS AFTER THE EARTH IS EXPOSED. APPLICATION RATE USED: 100 LB/ACRE
9. BROADCASTING OF THE SEED BY MACHINE, HAND METHODS, HYDRAULIC SEEDING OR OTHER METHODS APPROVED BY THE ENGINEER WILL BE ALLOWED FOR TEMPORARY EROSION CONTROL SEEDING.
10. TOPSOIL AND FERTILIZER NUTRIENTS ARE NOT REQUIRED FOR TEMPORARY EROSION CONTROL SEEDING.
11. SEED BED PREPARATION WILL NOT BE REQUIRED FOR TEMPORARY EROSION CONTROL SEEDING IF THE SOIL IS IN A LOOSE CONDITION. LIGHT DISKING SHALL BE DONE IF THE SOIL IS HARD PACKED OR CAKED.
12. MULCH WILL NOT BE REQUIRED AFTER TEMPORARY EROSION CONTROL SEEDING HAS BEEN COMPLETED ON AREAS WITH SLOPES FLATTER THAN 1:3 (V:H) THAT ARE TEMPORARY SEEDED BEFORE NOVEMBER 2.
13. MULCH, METHOD 2 (PROCEDURE 2) SHALL BE PLACED IN ACCORDANCE WITH THE REQUIREMENT OF THE STANDARD SPECIFICATIONS AFTER TEMPORARY EROSION CONTROL SEEDING HAS BEEN COMPLETED ON AREAS WITH SLOPES STEEPER THAN 1:3 (V:H) THAT ARE TEMPORARY SEEDED BEFORE NOVEMBER 2.
14. EROSION CONTROL BLANKET SHALL BE PLACED IN ACCORDANCE WITH THE REQUIREMENTS OF THE STANDARD SPECIFICATIONS AFTER TEMPORARY EROSION CONTROL SEEDING HAS BEEN COMPLETED ON ALL AREAS THAT ARE TEMPORARY SEEDED ON OR AFTER NOVEMBER 2.
15. ALL PERIMETER EROSION BARRIER SHALL BE INSTALLED WITHIN THE TEMPORARY EASEMENT, PROPOSED RIGHT-OF-WAY OR EXISTING RIGHT-OF-WAY.
16. EROSION CONTROL ITEMS ARE CONSIDERED TO BE HIGH PRIORITY ITEMS ON THIS CONTRACT. THE ENGINEER WILL IMPLEMENT ALL PROVISIONS OF THE SPECIFICATION NECESSARY TO ASSURE THAT EROSION CONTROL ITEMS ARE CONSTRUCTED AND MAINTAINED IN A TIMELY WAY. ALL EROSION CONTROL MEASURES SHALL BE INSTALLED PRIOR TO BEGINNING ANY CONSTRUCTION ACTIVITIES WHICH WILL POTENTIALLY CREATE ERODABLE CONDITIONS.
17. THE CONTRACTOR SHALL INSTALL PERIMETER EROSION BARRIER PRIOR TO STRIPPING VEGETATION.
18. TEMPORARY DITCH CHECKS AND INLET AND PIPE PROTECTION SHALL BE INSTALLED IMMEDIATELY AFTER DISTURBANCE.
19. THE CONTRACTOR SHALL MAINTAIN ALL EROSION CONTROL DEVICES AT ALL TIMES. EROSION CONTROL DEVICES SHALL BE INSPECTED AT LEAST ONCE EVERY SEVEN (7) CALENDAR DAYS AND WITHIN TWENTY-FOUR (24) HOURS OF THE END OF A STORM THAT IS 0.5 INCHES OR GREATER, OR EQUIVALENT SNOWFALL. ADDITIONALLY, DURING WINTER MONTHS, MEASURES SHOULD BE INSPECTED AFTER SIGNIFICANT SNOWMELTS.
20. THE IDOT EROSION AND SEDIMENT CONTROL FIELD GUIDE FOR CONSTRUCTION INSPECTION AND THE ILLINOIS URBAN MANUAL, PRACTICE STANDARD, DEWATERING CODE 813 SHALL BE FOLLOWED WHEN DEWATERING THE CONSTRUCTION SITE.
21. THE CONTRACTOR SHALL ADDRESS ALL EROSION CONTROLS COMMENTS/MAINTENANCE REQUESTS BY THE ENGINEER WITH A 24 HOURS NOTIFICATION TIME FRAME FROM THE TIME OF RECEIPT OF COMMENTS BY THE ENGINEER.
22. THE CONTRACTOR WILL PROVIDE AN IN-STREAM WORK PLAN FOR REVIEW BY THE ENGINEER, AND WRITTEN APPROVAL BY THE USACE, PRIOR TO STARTING ANY WORK WITHIN THE IN-STREAM WORK AREA.
23. THE USE OF HAY OR STRAW BALES FOR ANY EROSION AND SEDIMENT CONTROL MEASURES IS NOT PERMITTED.
24. J-HOOKS PER IDOT STANDARD 280001 SHALL BE INSTALLED DURING THE INSTALLATION OF THE PERIMETER EROSION BARRIER WHERE NEEDED.
25. PERMANENT SEEDING AND EROSION CONTROL BLANKET SHALL BE INSTALLED ON ALL DISTURBED AREAS IMMEDIATELY FOLLOWING FINAL GRADING
26. STOCKPILES OF SOIL AND OTHER ERODIBLE MATERIALS TO REMAIN IN PLACE MORE THAN THREE (3) DAYS SHALL BE FURNISHED WITH EROSION AND SEDIMENT CONTROL MEASURES (I.E. PERIMETER EROSION BARRIER). STOCKPILES TO REMAIN IN PLACE FOR 7 DAYS OR MORE SHALL RECEIVE TEMPORARY SEEDING.
27. IF DEWATERING SERVICES ARE USED, ADJOINING PROPERTIES AND DISCHARGE LOCATIONS SHALL BE PROTECTED FROM EROSION. DISCHARGE SHALL BE ROUTED THROUGH AN EFFECTIVE SEDIMENT CONTROL MEASURE (I.E. SEDIMENT TRAP, SEDIMENT BASIN, OR OTHER APPROPRIATE MEASURE).

FILE NAME = ...\\D168M83-sh1t-eros.dgn		DESIGNED - SEF	REVISED - 12/6/2011 N.W.S.	STATE OF ILLINOIS DEPARTMENT OF TRANSPORTATION	IL ROUTE 53 OVER ST JOSEPH'S CREEK		F.A.P. RTE. 870	SECTION 534R-B	COUNTY DuPAGE	TOTAL SHEETS 51	SHEET NO. 14
		DRAWN - GEW	REVISED - 1/27/2012 N.W.S.		EROSION CONTROL PLAN		SCALE: 1" = 30'	SHEET NO. 1 OF 1 SHEETS	STA. TO STA.	ILLINOIS FED. AID PROJECT	
CHECKED - RJD	REVISED -										
DATE - 12/12/2011	REVISED -										