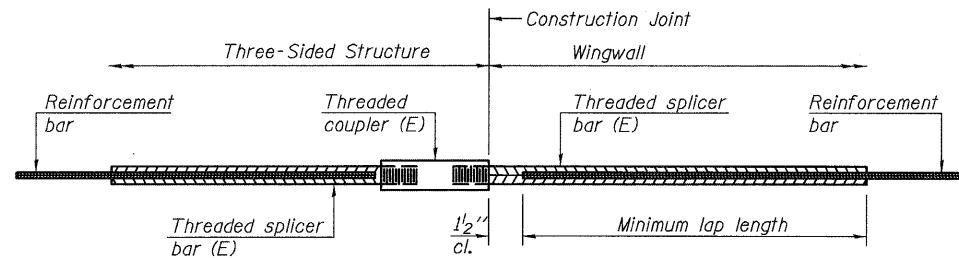


**BAR SPLICER ASSEMBLY FOR FOUNDATIONS**

(Footings & Pedestal)

No. Required = 84



**\* BAR SPLICER ASSEMBLY BETWEEN WINGWALLS AND THREE-SIDED STRUCTURE**

No. required = 128

Minimum Lap Lengths					
Bar size to be spliced	Table 1	Table 2	Table 3	Table 4	Table 5
3, 4	1'-5"	1'-11"	2'-1"	2'-4"	2'-3"
5	1'-9"	2'-5"	2'-7"	2'-11"	2'-10"
6	2'-1"	2'-11"	3'-1"	3'-6"	3'-4"
7	2'-9"	3'-10"	4'-2"	4'-8"	4'-6"
8	3'-8"	5'-1"	5'-5"	6'-2"	5'-10"
9	4'-7"	6'-5"	6'-10"	7'-9"	7'-5"

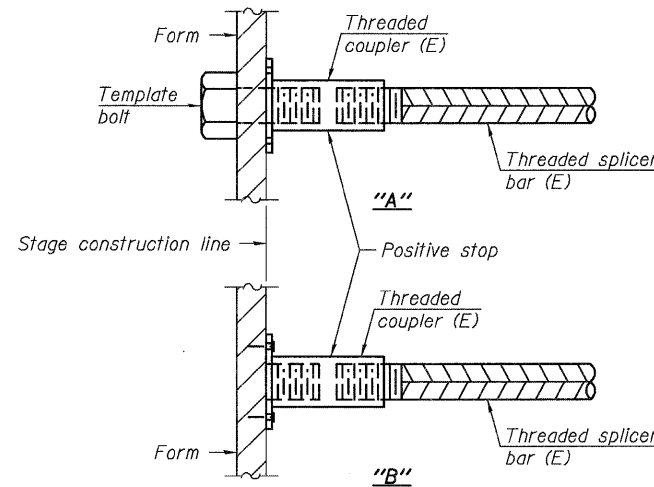
Table 1: Black bar, 0.8 Class C  
 Table 2: Black bar, Top bar lap, 0.8 Class C  
 Table 3: Epoxy bar, 0.8 Class C  
 Table 4: Epoxy bar, Top bar lap, 0.8 Class C

Threaded splicer bar length = min. lap length + 1/2" + thread length

\* Epoxy not required on Bar Splicer Assembly components used in conjunction with black bars.

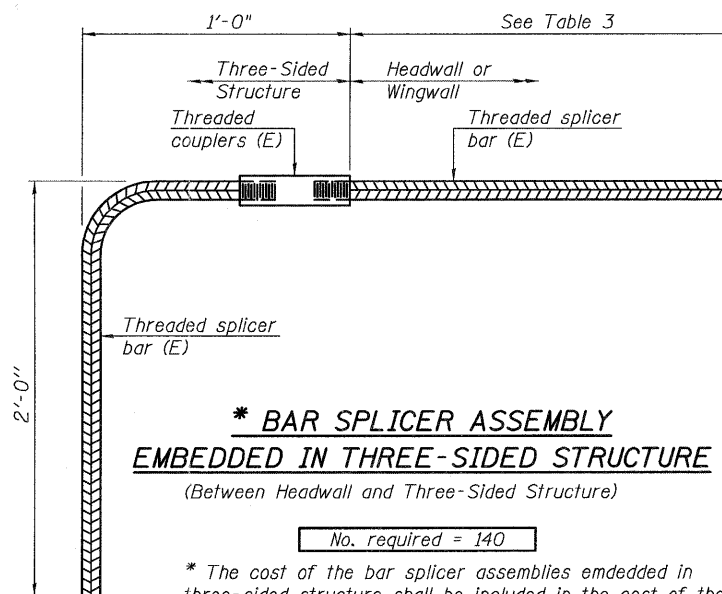
Location	Bar size	No. assemblies required	Table for minimum lap length
Pedestal	#5	20	Table 3
Footing Slab	#5	32	Table 3
Between Headwall & Wingwall	#4	32	Table 3
Between Headwall & Three-Sided Structure	#4	70*	Table 3
Between Headwall & Three-Sided Structure	#6	70*	Table 3
Between Wingwalls & Three-Sided Structure	#4	96*	Table 1

\* For Information Only.  
 Cost is Included with Three-Sided Structure



**INSTALLATION AND SETTING METHODS**

"A" : Set bar splicer assembly by means of a template bolt.  
 "B" : Set bar splicer assembly by nailing to wood forms or cementing to steel forms.  
 (E) : Indicates epoxy coating.



**\* BAR SPLICER ASSEMBLY EMBEDDED IN THREE-SIDED STRUCTURE**

(Between Headwall and Three-Sided Structure)

No. required = 140

\* The cost of the bar splicer assemblies embedded in three-sided structure shall be included in the cost of the Three-Sided Precast Concrete Structures 28'x10'.

**NOTES**

Splicer bars shall be deformed with threaded ends and have a minimum 60 ksi yield strength.  
 All reinforcement shall be lapped and tied to the splicer bars.  
 Bar splicer assemblies shall be epoxy coated according to the requirements for reinforcement bars. See Section 508 of the Standard Specifications.  
 See special provision for Mechanical Splicers.  
 See approved list of bar splicer assemblies and mechanical splicers for alternatives.  
 Threaded splicer bar length = min. lap length + 1/2" + threaded length