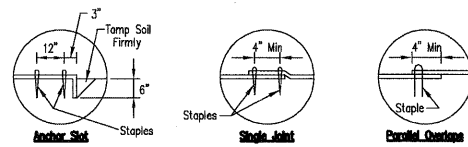
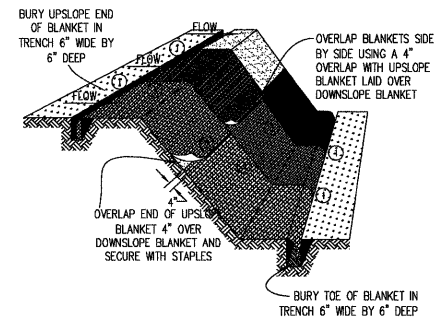


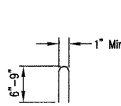
EROSION CONTROL BLANKET



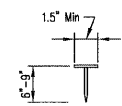
DETAIL 1

DETAIL 2

DETAIL 3



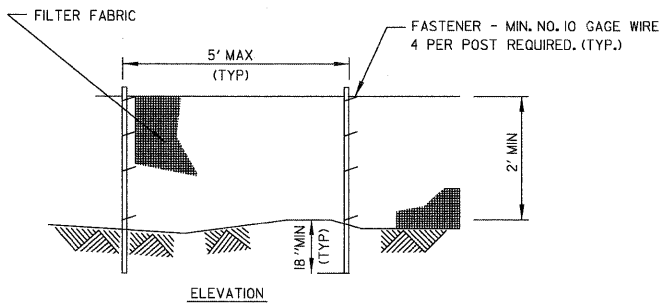
STAPLE DETAIL



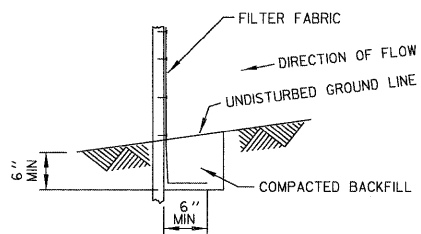
PUSH PIN DETAIL

- NOTES:
1. STAPLES SHALL BE PLACED IN A DIAMOND PATTERN AT 2 PER S.Y. FOR STICHED BLANKETS. NON-STICHED SHALL USE 4 STAPLES PER S.Y. OF MATERIAL. THIS EQUATES TO 200 STAPLES WITH STICHED BLANKET AND 400 STAPLES WITH NON-STICHED BLANKET PER 100 S.Y. OF MATERIAL.
 2. STAPLE OR PUSH PIN LENGTHS SHALL BE SELECTED BASED ON SOIL TYPE AND CONDITIONS. (MINIMUM STAPLE LENGTH IS 6")
 3. EROSION CONTROL MATERIAL SHALL BE PLACED IN CONTACT WITH THE SOIL OVER A PREPARED SEEDBED.
 4. ALL ANCHOR SLOTS SHALL BE STAPLED AT APPROXIMATELY 12" INTERVALS.

SILT FENCE PLAN

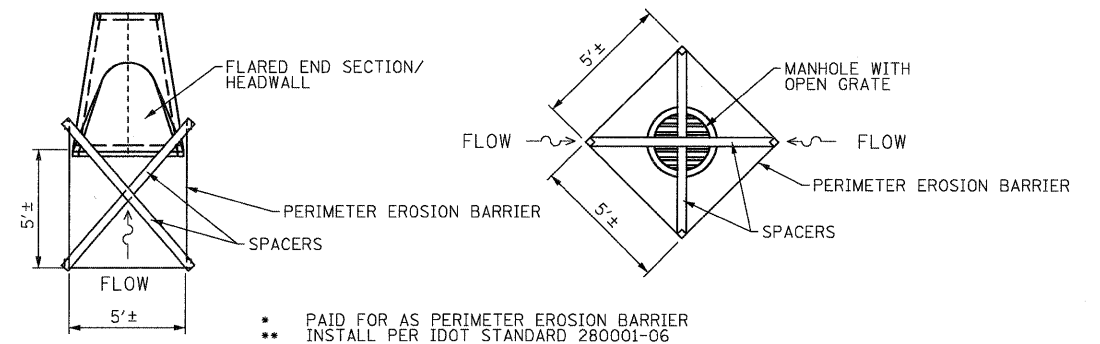


ELEVATION



FABRIC ANCHOR DETAIL

- NOTES:
1. TEMPORARY SEDIMENT FENCE SHALL BE INSTALLED PRIOR TO ANY GRADING WORK IN THE AREA TO BE PROTECTED. THEY SHALL BE MAINTAINED THROUGHOUT THE CONSTRUCTION PERIOD AND REMOVED IN CONJUNCTION WITH THE FINAL GRADING AND SITE STABILIZATION.
 2. FILTER FABRIC SHALL MEET THE REQUIREMENTS OF MATERIAL SPECIFICATION 592 GEOTEXTILE TABLE 1 OR 2, CLASS I WITH EQUIVALENT OPENING SIZE OF AT LEAST 30 FOR NONWOVEN AND 50 FOR WOVEN.
 3. FENCE POSTS SHALL BE EITHER STANDARD STEEL POST OR WOOD POST WITH A MINIMUM CROSS-SECTIONAL AREA OF 3.0 SQ. IN.
 4. PLACE THE END POST OF THE SECOND FENCE INSIDE THE END POST OF THE FIRST FENCE.
 5. ROTATE BOTH POSTS AT LEAST 180 DEGREES IN A CLOCKWISE DIRECTION TO CREATE A TIGHT SEAL WITH THE FABRIC MATERIAL.
 6. DRIVE BOTH POSTS A MINIMUM OF 18 INCHES INTO THE GROUND AND BURY THE FLAP.



• PAID FOR AS PERIMETER EROSION BARRIER
 •• INSTALL PER IDOT STANDARD 280001-06

DRAINAGE PROTECTION DETAILS
 SCALE: N.T.S.

FILE NAME = ...\\D162M83-sht-details.dgn



DESIGNED - NS	REVISED -
DRAWN - GEW	REVISED -
CHECKED - RJD	REVISED -
DATE - 10/4/2011	REVISED -

STATE OF ILLINOIS
 DEPARTMENT OF TRANSPORTATION

IL ROUTE 53 OVER ST JOSEPH'S CREEK
 MISCELLANEOUS DETAILS

SCALE: N.T.S. SHEET NO. 1 OF 1 SHEETS STA. TO STA.

F.A.P. RTE.	SECTION	COUNTY	TOTAL SHEETS	SHEET NO.
870	534R-B	DuPAGE	51	41
CONTRACT NO. 60M83			ILLINOIS FED. AID PROJECT	